

A solid green horizontal bar spanning the width of the page, positioned below the logo.

Redistricting Overview

North Marin Water District

Overview of District and application of
State/Federal voting rights acts

What is Redistricting

definition

Districted Systems, like Congress and the legislature, elect one-person per district, with only voters from that district casting ballots for their representative.

A system without districts is considered an “at-large” election system. There are also varieties of mixed district and at-large systems.

What is Redistricting

definition

Redistricting is the process of adjusting district lines every 10 years after the release of the US Census. The well known examples are Congress and the legislature.

Within the US, redistricting has become an extremely politicized process and been the subject of more Supreme Court decisions than any other part of our elections system.

More cases on partisan redistricting are heading to the Supreme Court.

What is Redistricting

The Gerrymander

The term Gerrymander came from a cartoon depicting a rather serpentine looking district created by Governor Elbrige Gerry in Massachusetts.

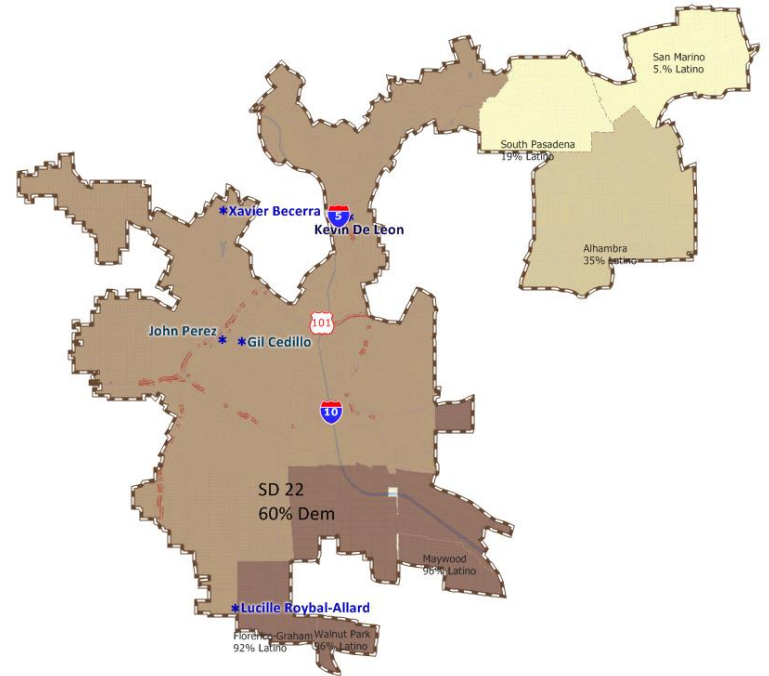


What is Redistricting

the Gerrymander

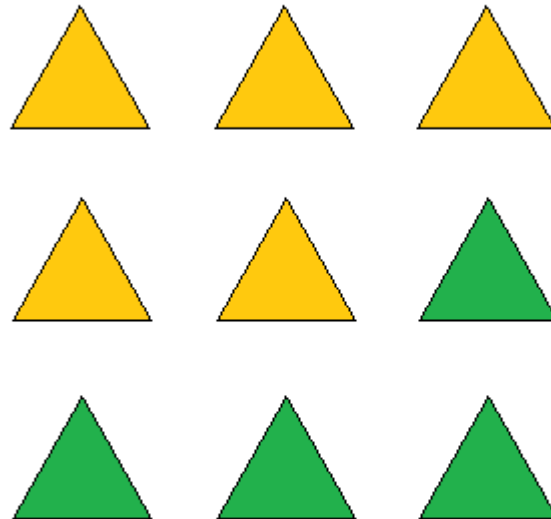
There are more recent examples of gerrymandering, even in California.

This 2001 Senate District is a great example.



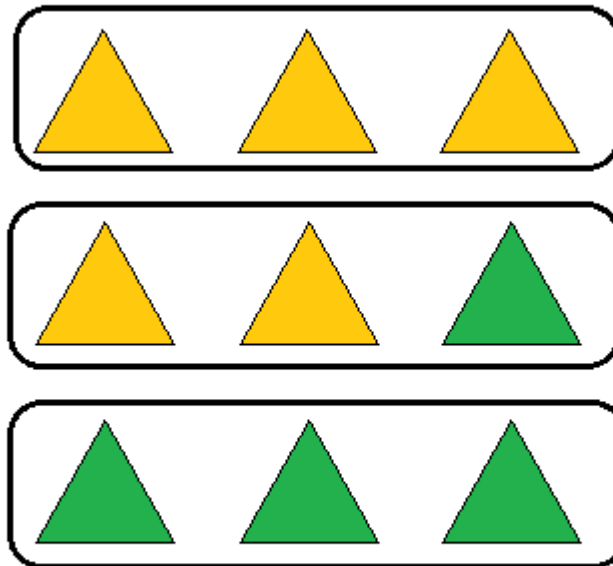
What is Redistricting

Why should anyone care?



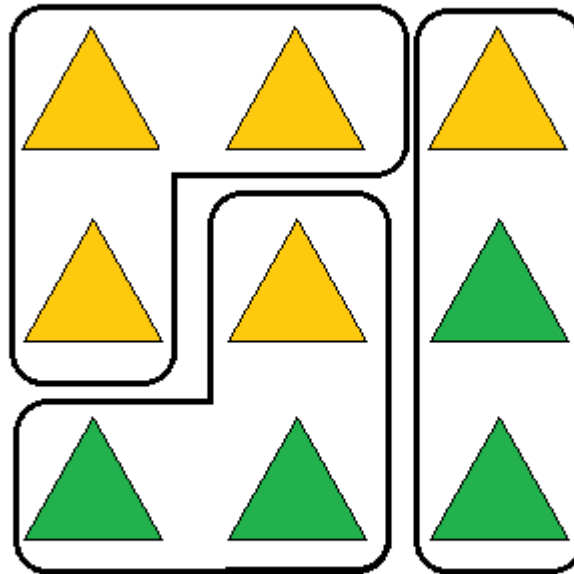
What is Redistricting

Why should anyone care?



What is Redistricting

Why should anyone care?



What is Redistricting

Why should anyone care?



In local agencies this is unlikely to be about Partisanship as much as rural v. urban; old neighborhoods vs. new, one side of town vs. another.

Traditional Redistricting Principles

Should be followed by Local Agencies

There are a number of criteria that have been used nationally and upheld by courts.

- Relatively equal size - people, not citizens
- Contiguous – districts should not hop/jump
- Maintain “*communities of interest*”
- Follow city/county/local government lines
- Keep districts compact – appearance/function

Traditional Redistricting Principles

Should be followed by Local Agencies

There are a number of criteria that have been used nationally and upheld by courts.

- **Relatively equal size - people, not citizens**
- Contiguous – districts should not hop/jump
- Maintain “*communities of interest*”
- Follow city/county/local government lines
- Keep districts compact – appearance/function

Traditional Redistricting Principles

Should be followed by Local Agencies

There are a number of criteria that have been used nationally and upheld by courts.

- Relatively equal size - people, not citizens
- **Contiguous – districts should not hop/jump**
- Maintain “*communities of interest*”
- Follow city/county/local government lines
- Keep districts compact – appearance/function

Traditional Redistricting Principles

Should be followed by Local Agencies

Contiguous is a traditional criteria, but there is also such a thing as “functional contiguous” which has two meanings:

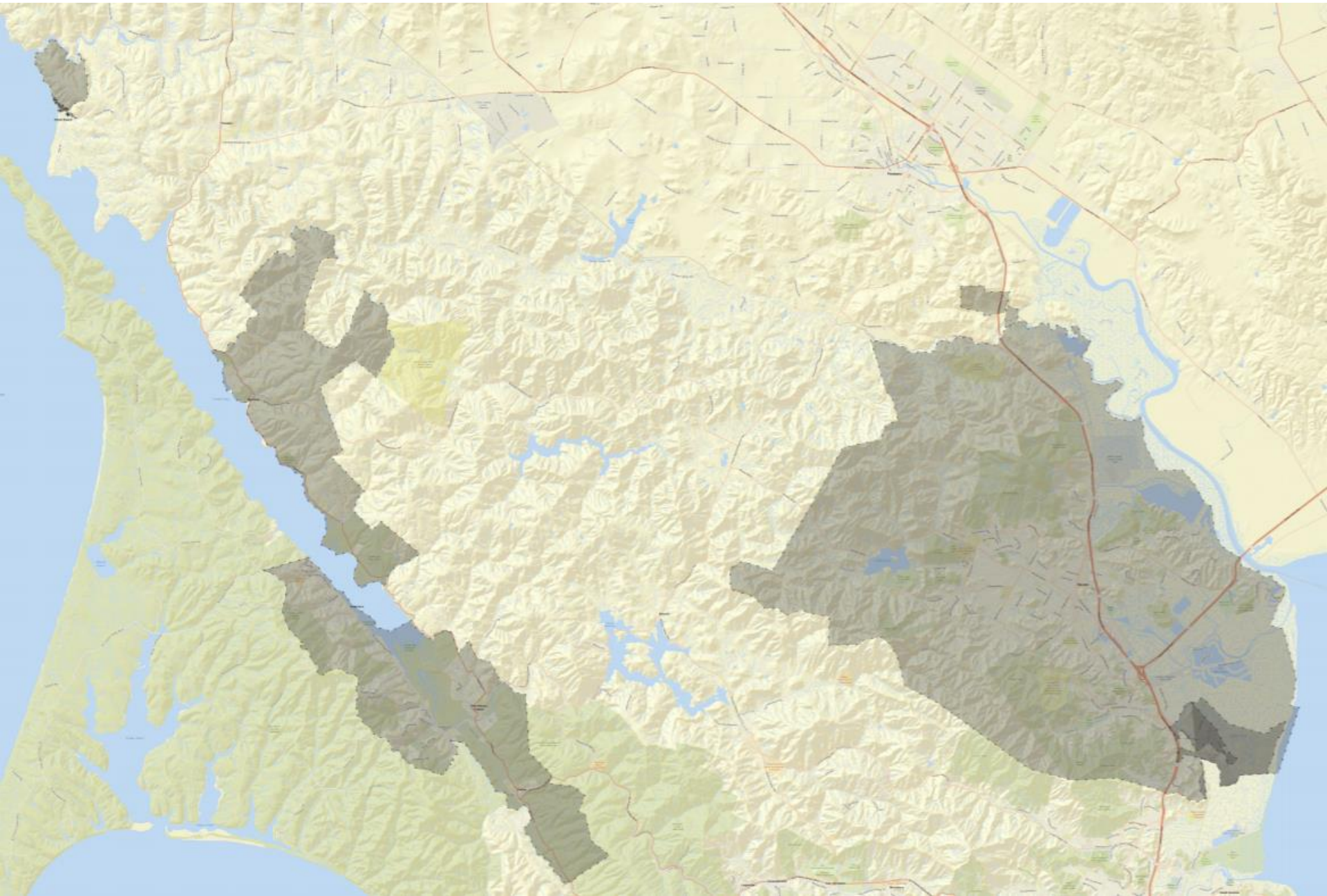
- When an area isn’t literally contiguous to begin with, they should be drawn with other areas that they are most related to. Think of Angel Island, which could be functionally contiguous with San Francisco, Tiburon or even Oakland based on Ferry connections.
- When an area is literally contiguous, but separated by a mountain or lake, it might not be a functional contiguity.

Traditional Redistricting Principles

Should be followed by Local Agencies

The North Marin Water District has three so-called “islands” – areas that are not contiguous to the main body of the district with the greatest population.

These should be drawn with areas they are most connected to through communities of interest, transportation, similar interactions with the district or other documentable criteria.



Traditional Redistricting Principles

Should be followed by Local Agencies

There are a number of criteria that have been used nationally and upheld by courts.

- Relatively equal size - people, not citizens
- Contiguous – districts should not hop/jump
- **Maintain “*communities of interest*”**
- Follow city/county/local government lines
- Keep districts compact – appearance/function

Communities of Interest

Bringing like people together for representation

What is a community of interest includes ethnic and language minorities and other groups.

- Communities covered by the Voting Rights Act
 - Latinos
 - Asians
 - African Americans

While race is a community of interest, it cannot be the *predominant factor* in drawing districts.

Communities of Interest

Bringing like people together for representation

What is a community of interest includes ethnic and language minorities and other groups.

- Other Communities, example are:
 - People living near an industry (port, airport, downtown)
 - Senior Citizen communities
 - Coastal communities
 - Environmental Interests
 - Homeowners or Renters

Traditional Redistricting Principles

Should be followed by Local Agencies

There are a number of criteria that have been used nationally and upheld by courts.

- Relatively equal size - people, not citizens
- Contiguous – districts should not hop/jump
- Maintain “*communities of interest*”
- **Follow city/county/local government lines**
- Keep districts compact – appearance/function

Traditional Redistricting Principles

Should be followed by Local Agencies

There are a number of criteria that have been used nationally and upheld by courts.

- Relatively equal size - people, not citizens
- Contiguous – districts should not hop/jump
- Maintain “*communities of interest*”
- Follow city/county/local government lines
- **Keep districts compact – appearance/function**

What is the CVRA?

The California Voting Rights Act is a state law that prohibits the use of At-Large election systems in local government if there is racially polarized voting.

“At Large” is defined as anything other than a system in which an elected official lives in a district, and is only elected by members of that district.

“Racially Polarized Voting” is determined through an analysis which quantifies the amount of voting which can be shown to be correlated to race.

What is the CVRA?

The California Voting Rights Act takes the principles of the Federal Voting Rights Act and expands it regarding districted elections in two key ways:

While Federal law uses “majority minority” districts as a standard for vulnerability, the CVRA only requires “ability to influence.”

The CVRA requires that plaintiffs get full reimbursement for legal fees associated with any successful challenge.

What is the CVRA?

The California Voting Rights Act takes the principles of the Federal Voting Rights Act and expands it regarding districted elections in two key ways:

While Federal law uses “majority minority” districts as a standard for vulnerability, the CVRA only requires “ability to influence.”

The CVRA requires that plaintiffs get full reimbursement for legal fees associated with any successful challenge. ***These can be lessened or eliminated if the district follows a strict and prompt process for districting.***

North Marin Water District

Preliminary Findings

Census population is 61,520 based on the 2010 Census. The largest city is Novato with nearly 85% of the population.

- Novato: 51,904
- Black-Point Green Pt. 1,306
- Inverness / Olema / B.V. 1,304
- Point Reyes Station 848
- Dillon Beach 172

North Marin Water District

Preliminary Findings

Using this population, the “equal population” is based on how far you deviate from the median district.

Total Population: 61,520

Median: 12,304 (5 districts)

Districts should be drawn within an acceptable population range from the median size, with the largest being no more than 10% larger than the smallest district.

North Marin Water District

Preliminary Findings

For determining ethnicity of a district we use the American Community Survey calculations of Citizen Voting Age Population or “CVAP” which is also sometimes called “eligible voters population”

- CVAP: 44,804
- Latino CVAP: 4,522 (10%)
- Asian CVAP: 2,445 (5.5%)
- Black CVAP: 800 (2%)

North Marin Water District

Preliminary Findings

Voter population of the district is 38,942. While this is not how population is calculated for the creation of districts, we can see interesting data in the voter file.

- Total Voters: 38,942
- Latino: 3,446
- Asian: 1,840

- Novato: 31,537
- Uninc. Marin: 6,894
- Uninc. Sonoma: 1

North Marin Water District

What's Next

Public hearings will be held to obtain input on communities of interest and receive feedback on potential districting plans prior to board adoption

Input can be provided in public hearings or using our “Community of Interest Worksheet.



North Marin Water District

What's Next

Public hearings will be held to obtain input on communities of interest and receive feedback on potential districting plans prior to board adoption

- | | |
|---------|--|
| May 21 | 2 nd Public Hearing |
| May 28 | Publish draft maps |
| June 4 | 3 rd Public Hearing |
| June 11 | Publish amended maps (if any) |
| June 18 | 4 th Public Hearing |
| July 9 | Publish maps and sequence of elections |
| July 16 | Public Hearing and Ordinance Adoption |



REDISTRICTING PARTNERS