



NORTH MARIN WATER DISTRICT
AGENDA - REGULAR MEETING
 June 7, 2016– 7:00 p.m.
 District Headquarters
 999 Rush Creek Place
 Novato, California

Information about and copies of supporting materials on agenda items are available for public review at 999 Rush Creek Place, Novato, at the Reception Desk, or by calling the District Secretary at (415) 897-4133. A fee may be charged for copies. District facilities and meetings comply with the Americans with Disabilities Act. If special accommodations are needed, please contact the District Secretary as soon as possible, but at least two days prior to the meeting.

Est. Time	Item	Subject
7:00 p.m.	CALL TO ORDER	
	1.	CLOSED SESSION: In accordance with California Government Code Section 54957 for Public Employee Performance Evaluation (One), Title: General Manager
	2.	APPROVE MINUTES FROM REGULAR MEETING May 17, 2016
	3.	GENERAL MANAGER'S REPORT
	4.	OPEN TIME: <i>(Please observe a three-minute time limit)</i> This section of the agenda is provided so that the public may express comments on any issues not listed on the agenda that are of interest to the public and within the jurisdiction of the North Marin Water District. When comments are made about matters not on the agenda, Board members can ask questions for clarification, respond to statements or questions from members of the public, refer a matter to staff, or direct staff to place a matter of business on a future agenda. The public may also express comments on agenda items at the time of Board consideration.
	5.	STAFF/DIRECTORS REPORTS
		CONSENT CALENDAR The General Manager has reviewed the following items. To his knowledge, there is no opposition to the action. The items can be acted on in one consolidated motion as recommended or may be removed from the Consent Calendar and separately considered at the request of any person.
	6.	Consent – Approve Rescinding Resolution 16-14 entitled: "Resolution of the Board of Directors of North Marin water District Enacting Regulation 54 a(3) – Water Drought Surcharge"
	7.	Consent – Approve Renew agreement with District Risk Consultant DB Claims
	8.	Consent – Approve 2015 Consumer Confidence Report – Novato
	9.	Consent – Approve 2015 Consumer Confidence Report – Point Reyes
		ACTION CALENDAR
	10.	Set Hearing: Proposed Increase in Oceana Marin Sewer Connection
		INFORMATION ITEMS
	11.	Pt. Reyes System Overview – Focus on Water Quality
	12.	Initial Review – FY17 West Marin Water and Oceana Marin Sewer Budgets

All times are approximate and for reference only.
 The Board of Directors may consider an item at a different time than set forth herein.

(Continued)

Est. Time	Item	Subject
	13.	AMI Project Status Report
	14.	NBWA Meeting – June 3, 2016
	15.	TAC Meeting – June 6, 2016
	16.	MISCELLANEOUS Disbursements Take it From the TAP! Program encourages Sonoma and Marin to choose tap water first CA-NV AWWA Organizational Chart AWWA Trustees AWWA Water Quality Lab Analyst Certification <u>News Articles:</u> MacLeamy joins IJ editorial board PD Editorial: Hopkins for 5 th District Supervisor Yorba Linda legal fight turns nasty as residents seek to overturn water rate hike Marin water agencies likely to ease mandates as state issues new rules
8:30 p.m.	17.	ADJOURNMENT

1

2

DRAFT
NORTH MARIN WATER DISTRICT
MINUTES OF REGULAR MEETING
OF THE BOARD OF DIRECTORS
May 17, 2016

CALL TO ORDER

President Schoonover called the regular meeting of the Board of Directors of North Marin Water District to order at 7:00 p.m. at the District headquarters and the agenda was accepted as presented. Present were Directors Jack Baker, Rick Fraites, Stephen Petterle, Dennis Rodoni and John Schoonover. Also present were General Manager Chris DeGabriele, District Secretary Katie Young, Auditor-Controller David Bentley and Chief Engineer Drew McIntyre.

Novato Residents, Chris Ryan, Mike Jolly, Alfonso Campos, two unidentified residents, and District employees Pablo Ramudo (Water Quality Supervisor), and Tony Arendell (Construction/Maintenance Superintendent) were in the audience.

MINUTES

On motion of Director Fraites, seconded by Director Baker the Board approved the minutes from the previous meeting as presented by the following vote:

AYES: Director Baker, Fraites, Petterle, Rodoni and Schoonover

NOES: None

PUBLIC HEARING – CONSIDER PROPOSED INCREASE IN WATER RATES FOR NOVATO SERVICE AREA AND RESULTING REVISIONS TO DISTRICT REGULATION 54, WATER RATES

Mr. DeGabriele advised the Board that Novato customers were notified on April 1st of the public hearing scheduled for May 17th to consider the adoption of the proposed increase in the cost of water which averages 5% for the typical residential and non-residential customer and adoption of a Drought Revenue Recovery Surcharge, effective June 1, 2016. He noted that the letter advised customers to visit the District's website where they are able to use the water rate cost calculator to determine what their bill would be with the proposed rate increase and drought surcharge. Mr. DeGabriele informed the Board that there is no proposed increase to the bi-monthly service charge.

Mr. DeGabriele informed the Board that one of the reasons for the rate increase is the 6.6% higher cost to purchase water from Sonoma County Water Agency and that with the State mandated Water Conservation Regulations customers have done a marvelous job conserving, so well in fact that the District's revenue is down more than anticipated. He advised the Board that last year the

1 District budgeted to sell 2.7BG, a 24% reduction from 2013 and water sales are now projected to
2 come in at 2.2BG, the lowest total since 1979 when NMWD was exiting the 1977/78 drought of
3 record. He reminded the Board that last summer as revenue from water sales was reduced due to
4 State mandated cutbacks the District took action to reduce expenditures by \$1.2M. He advised the
5 Board that the budgeted payroll including benefits for next year is about \$8M or 33% of the budget
6 and that the budget is down 4% from one year ago. He noted that pension contributions rate is down
7 0.5% and beginning October 1st employees will pay 100% of their pension share.

8 Mr. DeGabriele advised the Board that in regards to continuation of the State Board's
9 mandated restrictions the District has actively argued since 2014 that the Sonoma-Marin region
10 should have relief since the water supply conditions are in better shape than much of the State, that
11 the District has had excellent performance both long term in reducing gallons per day per capita
12 pursuant to the Comprehensive Water Conservation Act of 2009 and the exemplary performance
13 during this most recent drought. He stated that only now the State Board is considering some relief.
14 Mr. DeGabriele stated that if the State Board adopts a revised Emergency Urban Water
15 Conservation Regulation allowing for self-certification and that the District certifies that an adequate
16 water supply exists he is requesting the Board to not impose the surcharge and instead adjust the
17 proposed Fiscal Year 2017 Novato Water Operations Budget to reflect an increase in water sales to
18 2.5BG. He advised the Board that he was going to attend the State Board meeting tomorrow and will
19 keep them apprised of the outcome.

20 Director Schoonover opened the public hearing at 7:13 p.m.

21 Novato Resident Mike Jolly suggested that customers be informed of the high fixed cost
22 necessary to operate water utilities.

23 Novato Resident Chris Ryan questioned the economic model of the rate structure and
24 whether an alternate may be better suited to insulate single family resident customers, suggesting
25 that larger users be "taxed".

26 Mr. DeGabriele responded that water conservation interests in California have advocated
27 that fixed charges be limited to encourage conservation and small water users, usually elderly or low
28 income, are highly impacted with additions to the bimonthly fixed charge. He stated that with regard
29 to large commercial users, those customers have paid larger connection fees based on using more
30 of the physical plant, pay a higher fixed charge for a larger meter and pay a summer surcharge on
31 the commodity rate. Mr. DeGabriele stated that the costs of operation are in the water delivery
32 system.

Hearing no further comment, Director Schoonover closed the public hearing at 7:41 p.m.

On motion of Director Rodoni, seconded by Director Fraites, the Board approved Resolution 16-13 entitled: "Resolution of the Board of Directors of North Marin Water District Amending Regulation 54- Water Rates" amending Regulation 54 pertaining to Water Rates and Charges reflect an increase averaging 5% for the typical residential customer in the Novato Service Area effective June 1, 2016 by the following vote:

AYES: Director Baker, Fraites, Petterle, Rodoni and Schoonover

NOES: None

On motion of Director Baker, seconded by Director Petterle, the Board approved Resolution 16-14 entitled: "Resolution of the Board of Directors of North Marin Water District enacting Regulation 54a(3) – Water Drought Surcharge" enacting the Regulation 54a.(3) Surcharge effective June 1, 2016 by the following vote:

AYES: Director Baker, Fraites, Petterle, Rodoni and Schoonover

NOES: None

On motion of Director Baker, seconded by Director Petterle, the Board instructed staff that if the SWRCB adopts the revised Regulation allowing for self-certification, and that the District certifies that an adequate water supply exists, to not impose the Surcharge and instead adjust the proposed FY17 Novato Water Operations budget to reflect 2.5BG in water sales by the following vote:

AYES: Director Baker, Fraites, Petterle, Rodoni and Schoonover

NOES: None

PUBLIC HEARING/ADOPT – PUBLIC HEARING FOR REVISIONS TO DROUGHT EMERGENCY WATER CONSERVATION REGULATIONS

Mr. DeGabriele requested to revise the Drought Emergency Water Conservation Regulations to reflect the Executive Order adopted by the Governor on May 9th and the proposed revisions to the Emergency Water Conservation Regulations. He informed the Board that preliminary calculation using the criteria in the proposed Emergency Regulations result in sufficient water supply being available over the next three years to meet the District's demand, so that no reduction mandate would be required. He advised the Board that the resolution continues to include the water waste prohibitions (no gutter flooding, repair leaks within a reasonable time, use only recycling decorative fountains, no washing down exterior paved areas, washing vehicles only with a bucket and hose equipped with an automatic shut off nozzle, not irrigating landscape during or

1 within 48 hours of measurable rainfall, serving drinking water in eating establishments only upon
2 request and providing hotel and motel guests with the option to not have towels and linens
3 laundered daily). He advised that before the Board tonight is a letter penned to the State Water
4 Resources Control Board (SWRCB) late last Friday commenting on the proposed Regulation. He
5 noted that he will be attending the SWRCB meeting tomorrow where the Regulation will be
6 considered.

7 Mr. DeGabriele advised the Board that staff is requesting that the Board considers adoption
8 of the Revised Resolutions for both Novato and West Marin Areas and to rescind Ordinance 28 to
9 comply with the State Board's Emergency Water Conservation Regulations and allow staff to make
10 minor changes. He stated that the State Board may set a floor where each District would have to
11 meet some amount to conserve and that the District will need to sell 2.5GB of water to result in
12 neutral water sales revenue compared with including a drought recovery revenue surcharge.

13 Director Schoonover opened the public hearing at 7:50 p.m.

14 Novato Resident Alfonso Campos reported the he owns two properties in Novato and
15 experienced leaks which resulted in water use charged at higher tiers. He suggested that the
16 District provides service to customers to alert them of the issue and find leaks to avoid the higher tier
17 charges.

18 Mr. DeGabriele questioned whether Mr. Campos had requested a bill adjustment and he
19 responded in the affirmative, confirming that Mr. Campos received a Water Smart Home Survey to
20 identify leaks and other measures that can be taken to lower water consumption. Mr. Campos was
21 informed that the District highlights the Water Smart Home Survey to all water users in the biannual
22 *Water Line* newsletter distributed to all customers.

23 Hearing no further comments, President Schoonover closed the public hearing at 7:55 p.m.

24 On motion of Director Fraites, seconded by Director Petterle, the Board adopted Revised
25 Resolution 14-18 entitled: "Resolution of the Board of Directors of the North Marin Water District
26 Implementing the State Water Resources Control Board's Mandate on Urban Water Suppliers to
27 Activate Mandatory Restrictions on Water Use", Revised Resolution 15-04 entitled: "Resolution of
28 the Board of Directors of the North Marin Water District Implementing the State Water Resources
29 Control Board's mandate on Urban Water Suppliers to Activate Mandatory Restrictions on Water
30 Use", rescinded Ordinance No. 28 with Ordinance No. 33 entitled: "An Ordinance of North Marin
31 Water District Rescinding Ordinance No. 28 to comply with the proposed State Board Emergency
32 Water Conservation Regulations and the Governor's Executive Order, along with authorizing staff to

1 make minor changes to the draft Resolutions in response to any unforeseen changes in the final
2 State Board Order by the following vote:

3 AYES: Director Baker, Fraites, Petterle, Rodoni and Schoonover

4 NOES: None

5 **GENERAL MANAGER'S REPORT**

6 **Take It From the Tap Campaign**

7 Mr. DeGabriele advised the Board that tomorrow the Sonoma Marin Saving Water
8 Partnership unveils its' "Take it from the Tap" campaign. He stated that the City of Santa Rosa is
9 taking the lead and has provided outreach information for all the partnership members. He informed
10 the Board that the District will be hanging a banner on the District's billboard and updating the
11 District's Facebook page regularly during the outreach campaign and that staff will also have new
12 reusable bottles for give a ways.

13 **Next Board Meeting**

14 Mr. DeGabriele reminded the Board that there is a skip week this month so the next Board
15 meeting is scheduled June 7th.

16 **ACWA Meet the President**

17 Mr. DeGabriele advised the Board that the ACWA "Meet the President" gathering that the
18 District is hosting will be on Thursday, June 2nd at Novato City Hall. He noted that when ACWA
19 distributes the invitations he will send the Board a reminder.

20 **Out of the Office**

21 Mr. DeGabriele informed the Board that he will be out of the office and out of state beginning
22 next Thursday, May 26th returning on Tuesday, May 31st and Drew McIntyre will be acting General
23 Manager in his absence.

24 **OPEN TIME**

25 President Schoonover asked if anyone in the audience wished to bring up an item not on the
26 agenda and there was no response.

1 **STAFF / DIRECTORS' REPORTS**

2 President Schoonover asked if staff or Directors wished to bring up an item not on the
3 agenda and the following items were discussed:

4 Director Rodoni reported he will not be in attendance at the June 7 meeting and District
5 Secretary Katie Young reminded the Board that there are three meetings scheduled in June with the
6 third meeting on June 28th in Point Reyes Station.

7 **MONTHLY PROGRESS REPORT**

8 Mr. DeGabriele provided the Board with the Monthly Progress Report for April which shows
9 that water production in Novato is down 32% from June 2015 through April 2016 compared to the
10 2013 benchmark. He stated that in West Marin, water production is down 27% over that same
11 period. He noted that water storage is ample: Lake Mendocino holds nearly 86,000AF, Lake
12 Sonoma 242,000AF and Stafford Lake is currently just under 4,000AF. Mr. DeGabriele informed the
13 Board that rainfall through April 2016 is about 80% of average. He advised the Board that at Oceana
14 Marin the effluent flow volume in April was exactly the same as last year and correlates well since
15 about the same amount of rain fell during April of both years. He stated that the District still intends
16 to analyze the effectiveness of the I&I work on the Oceana Marin sewer collection system. Mr.
17 DeGabriele reviewed the utility performance metric and noted that 66 customers were affected due
18 to maintenance of valves.

19 Mr. Bentley reported on investments for April 2016 and stated that the District's treasury
20 holds just over \$13.2M and is earning a rate of return equal to 0.68%.

21 **CONSENT CALENDAR**

22 On the motion of Director Rodoni, seconded by Director Fraites the Board approved the
23 following items on the consent calendar by the following vote:

24 AYES: Director Baker, Fraites, Petterle, Rodoni and Schoonover

25 NOES: None

26 **NOVATO SPRING WATERLINE, VOLUME 17, ISSUE 36**

27 The Board approved the text for the Novato Spring *Waterline*, Volume 17, Issue 36.

28 **WEST MARIN SPRING WATERLINE, VOLUME 13**

29 The Board approved the text for the West Marin Spring *Waterline*, Volume 13.

1 **ACTION ITEMS**

2 **GENERAL SERVICES AGREEMENT – GENTERRA CONSULTANTS, INC.**

3 Mr. McIntyre requested that the Board approve a General Services Consulting Agreement
4 with Genterra Consultants, which has specialized expertise in civil and geotechnical engineering for
5 dams. He advised the Board that the District's most recent report from the Division of Safety of
6 Dams (DSOD), identifies the need to develop a long-term maintenance plan to preserve the
7 concrete armoring of the upstream space. He stated that the DSOD also wants a statement
8 concluding that the dam performance is satisfactory based on review of instrumentation data (survey
9 monument data for elevation/alignment and the monthly peziometric water elevation monitoring
10 within the dam). Mr. McIntyre advised the Board that the General Services Agreement with Genterra
11 Consultants is for \$40,000 and it's expected that the first two tasks would total approximately half
12 that amount.

13 Director Baker asked if the armoring had been extended when the dam has been raised. Mr.
14 McIntyre stated that the dam was raised in the mid-1980's and the armoring was extended and is
15 holding up and has had patching jobs completed.

16 On motion of Director Petterle, seconded by Director Fraites, the Board authorized the
17 General Manager to execute a General Consulting Services Agreement between NMWD and
18 Genterra with a not-to-exceed limit of \$40,000 by the following vote:

19 AYES: Director Baker, Fraites, Petterle, Rodoni and Schoonover

20 NOES: None

21 **BID ADVERTISEMENT – RECYCLED WATER EXPANSION CENTRAL SERVICE AREA – WEST**
22 **PROJECT**

23 Mr. McIntyre requested that the Board approve the bid advertisement for the Recycled
24 Water Expansion Central Service Area West project. He stated that the west project involves
25 crossing U.S. 101 and 3.9 miles of pipeline, west of U.S. 101 extending south along Redwood Blvd
26 near Corinthian Court to South Novato Blvd, then along the U.S. 101 bike path to Entrada Dr. and
27 Ignacio Blvd up to just east of Country Club Drive. He noted that the current engineers estimate for
28 the work is \$6.5M. Mr. McIntyre advised the Board that the District expects to receive a minimum of
29 \$1.5M in federal grant funding, State of California Proposition 1 grant funding and a 1% State
30 Revolving Fund loan for the balance. He informed the Board that bids are due by July 26th and
31 expected to be awarded by August 19th, with construction to be completed by July 15, 2017.

1 On motion of Director Baker, seconded by Director Fraites, the Board authorized bid
2 advertisement of the Recycled Water Expansion Central Service Area – West Project by the
3 following vote:

4 AYES: Director Baker, Fraites, Petterle, Rodoni and Schoonover

5 NOES: None

6 **INFORMATION ITEMS**

7 **QUARTERLY PROGRESS REPORT – WATER QUALITY REPORT**

8 Pablo Ramudo, Water Quality Supervisor provided the Board with the 3rd quarter progress
9 report for Water Quality. He stated that Stafford Treatment Plant was not used as a source of water
10 supply and that several maintenance projects were underway during the quarter. He advised the
11 Board that of the 247 routine samples collected in the Novato Water System for compliance with the
12 Total Coliform Rule, there were no coliform positive samples for the quarter, chlorine residual
13 concentrations throughout the distribution system were good and the disinfection by-product
14 concentrations were moderate for this time of year. He informed the Board that there were some
15 complaints regarding increase in color and discolored water due to some manganese getting
16 through the system. He noted that this was probably caused by the stir up of a fire hydrant and staff
17 was able to flush the line handle the issue.

18 Mr. Ramudo advised the Board that in the Point Reyes System the rehabilitation of Coast
19 Guard Well #2 was completed in February. He stated that the well was sampled to complete water
20 quality testing needed to enable its use as a source of potable water after more than a year. He
21 noted that extensive chemical tests were completed and showed good results; however bacterial
22 tests showed the presence of coliform bacteria. He stated that the well was flushed and tested
23 weekly until coliforms in the raw water were cleared. Mr. Ramudo stated that Gallagher Well
24 supplied most of the potable water from the beginning of the quarter until early March when Coast
25 Guard Well #4 was used as the sole source of supply. He advised the Board that out of the 23
26 routine samples collected in the distribution system for compliance with the Total Coliform Rule,
27 there were no coliform positive samples this quarter and chlorine residual concentrations throughout
28 the distribution system were good.

29 Director Baker requested an exhibit showing locations of the West Marin well sites be
30 provided in the future.

1 **SECOND REVIEW – PROPOSED FY2016/17 NOVATO WATER EQUIPMENT BUDGET**

2 Mr. Bentley provided the Board with the second review of the proposed FY16/17 Novato
3 Water Equipment Budget and reminded the Board that the final review and approval of the budget is
4 set for June 21st. He stated that there were no changes from the previous review to the \$245K
5 equipment budget.

6 Director Fraites asked if it was necessary for him to recuse himself with regard to the Capital
7 Improvement Projects budget since item 1.a.1. Ridge Road Pipeline replacement is in close
8 proximity to his home. Mr. DeGabriele replied that it is not necessary for him to recuse himself
9 tonight and that staff would check with legal counsel if it is necessary when the budget and project is
10 presented for approval at a future meeting.

11 **SECOND REVIEW – PROPOSED FY 17 & FY 18 NOVATO CAPITAL IMPROVEMENT**
12 **PROJECTS**

13 Mr. Bentley provided the Board with the second review of the proposed FY 17 & FY 18
14 Novato Capital Improvement Projects Budget and reminded the Board that the final review and
15 approval of the budget is set for June 21st.

16 Mr. Bentley advised the Board that there were two minor changes since the last review
17 reducing the net change down \$10K. He stated that the projected cost for Automation of the Zone
18 Valve at Slowdown Court is now \$100K, an increase of \$40,000 and the projected cost of the
19 Stafford Lake Backfeed Dechlorination System was cut in half to \$50K. He advised the Board that
20 there are 17 major projects including the radio read advance meter infrastructure, and \$3M for the
21 office and yard refurbish that needs to move forward.

22 Director Schoonover asked how long in the future the office refurbishment would be. Mr.
23 Bentley replied that the remodel was deferred due to low water sales and that staff is still
24 researching possibilities.

25 **SECOND REVIEW – PROPOSED FY 2016/17 NOVATO OPERATIONS BUDGET**

26 Mr. Bentley provided the Board with the second review of the proposed FY 17 & FY 18
27 Novato Capital Improvement Projects Budget and reminded the Board that the final review and
28 approval of the budget is set for June 21st.

29 Mr. Bentley advised the Board that there were a number of additions and refinements to the
30 proposed budget since the initial review. He stated that the most significant is the addition of two
31 Apprentice Electrical/Mechanical Technicians at an annual cost, including benefits, of \$182,000. He
32 stated that other changes include a 5% spot adjustment for the Water Quality Supervisor, a \$35K

1 reduction in power cost to reflect reduced water sales volume, and a \$6K reduction in projected
2 revenue for lab services as Las Gallinas Valley Sanitary District has selected another provider. Mr.
3 Bentley stated that the combined impact of these changes decreases net income by \$161K. second
4 review – proposed fy 2016/17 Novato recycled water operations budget

5 Mr. Bentley provided the Board with the second review of the proposed FY2016/17 Recycled
6 Water Operations Budget and reminded them of the final review and approval of the budget set for
7 June 21st.

8 Mr. Bentley informed the Board that there were no significant changes to the initial review
9 and that consistent with the potable water rate increase, a 7% commodity rate increase is proposed
10 to be effective June 1st. He noted that the proposed increase is projected to generate \$48K in
11 additional revenue. He stated that operating expenses are budgeted to decrease 3% from the
12 existing budget.

13 Mr. DeGabriele advised the Board that the Recycled Water Budget does not include funding
14 the Residential Fill Station this year.

15 **MISCELLANEOUS**

16 The Board received the following miscellaneous information: Disbursements and Tour of
17 Novato Sponsor May 14.

18 The Board received the following news articles: Marin IJ Editorial: Keep desalination in
19 MMWD plan as insurance, Marin's flush water districts seek easing of state conservation mandate,
20 Marin fluoride ballot measure falls short of signatures, Gov. Brown seeks permanent water saving
21 measures amid pushback on state mandate, Marin IJ Editorial: Water ruling should be based on
22 reality, MALT nabs Gallagher land, and Survey Shows Californians' Support for Recycled Water.

23 The Board also received the following miscellaneous items at the meeting: A letter praising
24 NMWD employees from a customer, four letters of opposition for the rate increase, NBWA
25 watershed brochure, and a letter sent to SWRCB regarding May 18th Board meeting.

26 **ADJOURNMENT**

27 President Schoonover adjourned the meeting at 8:33 p.m.

28 Submitted by

29
30
31
32 Katie Young
33 District Secretary

3

4

5

6

MEMORANDUM

To: Board of Directors

June 3, 2016

From: Chris DeGabriele, General Manager

Subj: Rescinding Resolution 16-14 entitled: "Resolution of the Board of Directors of North Marin water District Enacting Regulation 54 a(3) – Water Drought Surcharge"

t:\gm\bod misc 2016\rescinding of resolution 1614.docx

RECOMMENDED ACTION: Rescind Resolution 16-14**FINANCIAL IMPACT:** None at this time

Attached is Resolution 16-14 entitled: "Resolution of the Board of Directors of North Marin water District Enacting Regulation 54 a(3) – Water Drought Surcharge" adopted at the May 17, 2016 Board Meeting. The Board instructed staff that if the State Water Resources Control Board adopted the revised Regulation allowing for self-certification, and that the District certifies that an adequate water supply exists, to not impose the surcharge and instead adjust the proposed Fiscal Year 2017 Novato Water Operations Budget to reflect an increase in water sales to 2.5BG.

RECOMMENDATION:

The Board approve rescinding of Resolution 16-14 entitled: "Resolution of the Board of Directors of North Marin water District Enacting Regulation 54 a(3) – Water Drought Surcharge".

Approved by GM CDDate 6/3/2016

**RESCIND
RESOLUTION 16-14**

**RESOLUTION OF THE BOARD OF DIRECTORS OF
NORTH MARIN WATER DISTRICT
ENACTING REGULATION 54 a(3) – WATER DROUGHT SURCHARGE**

WHEREAS, the Board of Directors hereby finds and determines that certain of the water rates and charges previously adopted by the Board are imposed based on the supply of water to be used or consumed by the customer. The Board of Directors also finds and determines that these rates and charges are not imposed upon real property or upon a person as an incident of property ownership, and such rates or charges may be reduced or avoided by a customer by reducing or discontinuing water use; and

BE IT RESOLVED by the Board of Directors of North Marin Water District that Regulation 54 a(3) of the North Marin Water District is enacted as follows, effective June 1, 2016:

(3) In the event a mandatory reduction in water use is triggered under the District's Water Shortage Contingency Plan for the Greater Novato Area, a Drought Surcharge will be implemented simultaneous with enactment of the mandatory stage. The Drought Surcharge will serve to mitigate the revenue loss resulting from a reduction in water use, as well as the liquidated damages assessed by the Sonoma County Water Agency pursuant to the water shortage and apportionment provisions of the Restructured Agreement for Water Supply. The Drought Surcharge shall be a quantity charge for each 1,000 gallons of potable water use as follows:

Residential Accounts: Use in excess of 300 gallons per day	\$1.00
Commercial, Institutional and Irrigation Accounts: All Use	\$1.00

* * * * *

I hereby certify that the foregoing is a true and complete copy of a resolution duly and regularly adopted by the Board of Directors of NORTH MARIN WATER DISTRICT at a regular meeting of said Board held on the seventeenth of May 2016, by the following vote:

AYES:	Directors Baker, Fraites, Petterle, Rodoni and Schoonover
NOES:	None
ABSENT:	None
ABSTAINED:	None



Katie Young, District Secretary
North Marin Water District


(SEAL)

7

MEMORANDUM

To: Board of Directors

June 3, 2016

From: David L. Bentley, Auditor-Controller 

Subj: Approve – Renew Agreement with District Risk Consultant DB Claims

I:\aclword\insurance\17\db claims agreement renewal 16.docx

RECOMMENDED ACTION: Approve**FINANCIAL IMPACT:** Typically Averages about \$1,000 Annually

DB Claims Services Group has served as the District's risk consultant since 1985, when the District first self-insured its general liability insurance coverage. Their agreement was last renewed in 2011. The District uses the risk consultant to review insurance contract language when questions arise, to serve as an adjustor for claims when appropriate, and for special projects such as the \$7,500 Risk Management Review conducted in 2009. Over the past five years the District has paid the consultant \$5,069 pertaining to adjustment of four major water damage claims, including a \$16,000 claim which went to small claims court where, with DB Claims assistance, the District was absolved of all liability. The District also receives advice from time to time on insurance matters at no charge.

The proposed 5-year renewal maintains the same \$80 per hour rate for claims administration (i.e., adjustment) and \$120 per hour for consulting services, with 5% escalators allowed in years 3, 4 and 5. Note that the 5% escalators are included in the expiring agreement and were never exercised. DB Claims standard hourly consulting rate is \$250 per hour.

RECOMMENDATION:

Authorize the Auditor-Controller to renew the agreement with DB Claims Services Group for a five-year period commencing July 1, 2016.

Approved by GM CDDate 6/3/2016

8

MEMORANDUM

To: Board of Directors
From: Pablo Ramudo, Water Quality Supervisor *PR*
Subject: 2015 Consumer Confidence Report- Novato
P:\LAB\WQ Supv\CCR\2015\Memo to board re 2015 ccr novato.doc

June 3, 2016

RECOMMENDED ACTION: Approve Text for 2015 Consumer Confidence Report – Novato and Bill Insert

FINANCIAL IMPACT: \$1900 (Included in FY 2015/2016 Budget)

The Safe Drinking Water Act requires water suppliers to publish and distribute a report of water quality information to its customers annually. The report contains details and results of monitoring for various contaminants throughout the previous year, a description of the sources of water and treatment regimes, as well as general information about water and its constituents. Customers who normally receive a paper bill will also receive an insert informing them that the report is available on our website and that a paper copy can be requested. Customers who receive an electronic bill will be sent an email with a link to the report on our website. We will initially order 750 printed copies of the report to mail to customers who request it and to have available to customers in our lobby. Additional copies will be ordered if necessary.

RECOMMENDATION

Approve text and design for the 2015 Consumer Confidence Report for Novato subject to any comments received from the Board of Directors.

Approved by GM

CD

Date

6/3/2016



NORTH MARIN WATER DISTRICT

2015 ANNUAL WATER QUALITY REPORT • NOVATO EDITION • PUBLISHED JUNE 2016

In 2015, water provided by North Marin Water District met or surpassed every federal and state drinking water standard.

This brochure is a snapshot of water quality monitoring performed in 2015. Included are details about where your water comes from, what it contains, and how it compares to state standards. If you have any questions regarding this Water Quality Report, contact Pablo Ramudo, Water Quality Supervisor, (415) 761-8929 or (800) 464-6693.



This report is available on our website: www.nmwd.com

North Marin Water District's Stafford Lake Water Treatment Plant produces about 20% of the water needed for Novato. This facility is designed to produce water which meets or exceeds strict state and federal standards for water quality. The water treatment process starts with chlorine dioxide and polymers prior to filtration through layers of garnet sand and anthracite. The water then passes through granular activated charcoal to remove any remaining impurities before adjusting the pH to 8.3 and the addition of a small amount of chlorine for disinfection.

Most of Novato's water supply is purchased as treated water from Sonoma County Water Agency

(SCWA). The SCWA water supply is collected from gravel beds 80 feet below and adjacent to the Russian River. The quality of this naturally filtered water is excellent, making additional treatment unnecessary. Water from additional SCWA wells in the Santa Rosa plain can be blended with the Russian River well water to augment water supply. Before delivering the water to Novato, SCWA adds small amounts of chlorine and sodium hydroxide to ensure purity and to adjust the pH to 8.3.

The Stafford Lake water supply blends with the SCWA water supply in the Novato water distribution system. The percentage from each source can vary by day and by season.

Este informe contiene información muy importante sobre su agua potable.

Tradúzcalo o hable con alguien que lo entienda bien. Para más información, llame al (415) 761-8929.

TABLE 1 Report on Detected Constituents with a Primary Drinking Water Standard (PDWS)					SONOMA COUNTY WATER AGENCY		STAFFORD WATER TREATMENT PLANT	
CONSTITUENT	UNITS	PHG / [MRDLG] (MCLG)	MCL / [MRDL] (PDWS)	TYPICAL SOURCE	Average	Range	Average	Range
Fluoride	mg/l	1.0	2.0	Erosion of natural deposits	.12	0.11 - 0.14	0.13	0.12 – 0.14
Nitrate (as N)	mg/l	10	10	Soil runoff from fertilizers, leaching from septic systems and sewage	ND	ND	ND	ND - 1.1
Radioactivity Gross Alpha	pCi/l	0	15	Erosion of natural deposits	ND	ND	ND (1)	ND (1)
Hexavalent chromium*	ug/L	0.02	10	Erosion of natural deposits; release of industrial chemicals	ND	ND	ND(2)	ND(2)
DISTRIBUTION SYSTEM WATER								
Chlorine, Free	mg/l	[4.0]	[4.0]	Drinking water disinfectant added for treatment	Average = 0.42 Range = ND – 1.30			
Total Coliform Bacteria	% of samples positive	0	>5% of monthly samples positive	Naturally present in the environment	August 2015 2% of samples positive (2 samples)/ 979 samples collected in 2015			
Total Trihalomethanes (3)	µg/l	n/a	80	By-product of drinking water disinfection	Highest Location Running Annual Average = 50 Range =12.9 – 75.1			
Total Haloacetic Acids (3)	µg/l	n/a	60	By-product of drinking water disinfection	Highest Location Running Annual Average = 11.5 Range =4.4 – 20.3			
Copper	µg/l	170	(AL 1300)	Internal corrosion of household plumbing systems	30 samples collected, none above the action level 90th percentile = 79, Range = ND - 130 (4)			
Lead	µg/l	2	(AL 15)	Internal corrosion of household plumbing systems	30 samples collected, none above the action level 90th Percentile = ND, Range = ND - 24 (4)			
TABLE 2 Constituents With Aesthetic Concerns and/or a Secondary Drinking Water Standard					SONOMA COUNTY WATER AGENCY		STAFFORD WATER TREATMENT PLANT	
CONSTITUENT	UNITS	SMCL	TYPICAL SOURCE		Average	Range	Average	Range
Color	PCU	15	Naturally-occurring organic materials		3.4	ND	ND	ND - 7.5
Odor	TON	3	Naturally-occurring organic materials		ND	ND - 3.5	ND	ND
Chloride	mg/l	500	Runoff / leaching of natural deposits		6.8	59 – 24	66	51 – 80
Sulfate	mg/l	500	Leaching of natural deposits, treatment chemicals		5	2.3 – 6.0	9.5	7.5 – 11
Turbidity	NTU	5	Soil runoff		ND	ND – 0.05	0.18	0.08 – 0.25
Total Dissolved Solids	mg/l	1000	Runoff / leaching of natural deposits		150	130 – 210	200	180 – 230
Sodium	mg/l	n/a	Naturally-occurring and treatment chemicals		8.9	7.4 – 36	31	29 – 35
Hardness (5)	mg/l	n/a	Leaching of natural deposits		94	37 – 99	100	85 – 120
Radon	pCi/l	n/a	See “Radon in Air,” back page		160	99 – 320	n/a	n/a
Specific Conductance	µmhos/cm	1600	Substances that form ions in water		260	240 – 270	350	320 – 410
Manganese	µg/l	50	Leaching from natural deposits		ND	ND – 69	ND	ND – 35
TABLE 3 Unregulated with no established maximum								
CONSTITUENT	UNITS	Primary Standard MCL/ [NL]	State PHG or Federal (MCLG)	TYPICAL SOURCES	System Range	System Average	Meets MCL or NL (YES/NO)	
Chromium	ug/L	50	(100)	Erosion of natural deposits; release of industrial chemicals	0.21 – 0.50	0.34	Yes	
Hexavalent Chromium*	ug/L	10	0.02	Erosion of natural deposits; release of industrial chemicals	0.10 – 0.40	0.25	Yes	
Chlorate	ug/L	[800]	NA	Byproduct of drinking water disinfection	130 - 240	180	Yes	
Strontium	ug/L	NA	NA	Erosion of natural deposits; release of industrial chemicals	130 – 240	180	Yes	
Vanadium	ug/L	[50]	NA	Erosion of natural deposits; release of industrial chemicals	0.31 - 1.0	.65	Yes	

*Hexavalent chromium is regulated by the State of California, the results of routine monitoring appear in table 1. Hexavalent chromium is not regulated by the federal government but is currently being assessed for future regulation with special monitoing taking place in 2014 and 2015. The results of this additional monitoring are summarized in Table 3.

LEGEND

PHG (Public Health Goal): The level of a contaminant in drinking water below which there is no known or expected risk to health. PHGs are set by the California Environmental Protection Agency.

MCLG (Maximum Contaminant Level Goal): The level of a contaminant in drinking water below which there is no known or expected risk to health. MCLGs are set by the U.S. Environmental Protection Agency (EPA).

MCL (Maximum Contaminant Level): The highest level of a contaminant that is allowed in drinking water. Primary MCLs are set as close to the PHGs (or MCLGs) as is economically and technologically feasible. Secondary MCLs (SMCL) are set to protect the odor, taste, and appearance of drinking water. MCLs and SMCLs are set by the California and/or U.S. EPA.

PDWS (Primary Drinking Water Standard): MCLs and MRDLs, for contaminants that affect health along with their monitoring and reporting requirements, and water treatment requirements.

AL (Action Level): The concentration of a contaminant that, if exceeded, triggers treatment or other requirements that a water system must follow.

TT (Treatment Technique): A required process intended to reduce the level of a contaminant in drinking water.

NTU (Nephelometric Turbidity Units): A measure of suspended material in water.

90th Percentile: Compliance based on highest value after eliminating the highest 10% of values.

MRDL (Maximum residual disinfectant level): The level of a disinfectant added for water treatment that may not be exceeded at the consumer’s tap.

MRDLG (Maximum residual disinfectant level goal): The level of a disinfectant added for water treatment below which there is no known or exposed risk to health. MRDLGs are set by the U.S. EPA.

NL (Notification Level): The notification level for some unregulated contaminants.

mg/l = milligrams per liter (parts per million) -equivalent to 4 drops of water in the average sized bathtub.

µg/l = micrograms per liter (parts per billion) -equivalent to 50 drops in an olympic size swimming pool

µmhos/cm = micromhos per centimeter

ND = Not Detected

n/a = Not Applicable

PCU = platinum cobalt units

pCi/l = picocuries per liter

(1) 2012 data.
(2) 2013 data.
(3) Compliance based on a four-quarter running average at each distribution system monitoring location.
(4) 2014 data.
(5) Average hardness shown in mg/L equates to 5.5 - 5.8 grains per gallon.

Concerning Lead and Drinking Water

If present, elevated levels of lead can cause serious health problems, especially for pregnant women and young children. Lead in drinking water is primarily from materials and components associated with service lines and home plumbing. NMWD is responsible for providing high quality drinking water to your meter, but cannot control the variety of materials used in home plumbing components. When water in your household plumbing has been sitting for several hours, you can minimize the potential for lead exposure by running your tap water for 30 seconds to 2 minutes before using water for drinking or cooking. If you are concerned about lead in your water, you may wish to have your water tested. Information on lead in drinking water, testing methods, and steps you can take to minimize exposure is available from the Safe Drinking Water Hotline or at www.epa.gov/safewater/lead.

A Message From the United States Environmental Protection Agency

The sources of drinking water (both tap water and bottled water) include rivers, lakes, streams, ponds, reservoirs, springs, and wells.

As water travels over the surface of the land or through the ground, it dissolves naturally occurring minerals and, in some cases, radioactive materials, and can pick up substances resulting from the presence of animals or from human activity.

Contaminants that may be present in source water include:

- **Microbial Contaminants**, such as viruses and bacteria, that may come from sewage treatment plants, septic systems, agricultural livestock operations, and wildlife.
- **Inorganic Contaminants**, such as salts and metals, that can be naturally occurring or result from urban stormwater runoff, industrial or domestic wastewater discharges, oil and gas production, mining or farming.
- **Pesticides and Herbicides**, that may come from a variety of sources such as agriculture, urban stormwater runoff, and residential uses.
- **Organic Chemical Contaminants**, including synthetic and volatile organic chemicals, that are by-products of industrial processes and petroleum production, and can also come from gas stations, urban stormwater runoff, agricultural applications and septic systems.
- **Radioactive Contaminants**, that can be naturally-occurring or be the result of oil and gas production and mining activities.

In order to ensure that tap water is safe to drink, the U.S. Environmental Protection Agency (USEPA) and the California Department of Public Health (CDPH) prescribe regulations that limit the amount of certain contaminants in water provided by public water systems. DHS regulations also establish limits for contaminants in bottled water that provide the same protection for public health.

Drinking water, including bottled water, may reasonably be expected to contain at least small amounts of some contaminants. The presence of contaminants does not necessarily indicate that water poses a health risk. More information about contaminants and potential health effects can be obtained by calling the USEPA's Safe Drinking Water Hotline (1-800-426-4791).

Some people may be more vulnerable to contaminants in drinking water than the general population. Immuno-compromised persons such as persons with cancer undergoing chemotherapy, persons who have undergone organ transplants, people with HIV/AIDS or other immune system disorders, some elderly, and infants can be particularly at risk from infections. These people should seek advice about drinking water from their health care providers. USEPA/Centers for Disease Control (CDC) guidelines on appropriate means to lessen the risk of infection by *Cryptosporidium* and other microbial contaminants are available from the Safe Drinking Water Hotline (1-800-426-4791).

Cryptosporidium & Giardia

Monitoring performed by NMWD on untreated water in Stafford Lake has intermittently shown the presence of *cryptosporidium*, a microbial pathogen found in surface waters throughout the U.S. NMWD's filtration is designed and operated to remove *cryptosporidium*, but 100% removal cannot be guaranteed. Should you be concerned? Healthy individuals should not be concerned. However, immuno-compromised people are at greater risk. We suggest immuno-compromised individuals consult their physician regarding appropriate precautions.

Radon in Air

Radon is a radioactive gas that can move from decomposed granite soils into a home through cracks and holes in the foundation. Radon can also get into indoor air when running tap water for showering and other household activities. In most cases, radon from tap water is a small source of radon in air. Radon is a known human carcinogen. It can lead to lung cancer. Drinking water containing radon may also cause increased risk of stomach cancer. The SCWA water was tested for Radon and showed an average of 160 and a range of 99 – 325 pCi/L (picocuries per liter). There is no federal regulation for radon levels in drinking water. Exposure over a long period of time to air transmitting radon may cause adverse health effects. If you are concerned about radon in your home, **test the air in your home!** Testing is inexpensive and easy. For additional information, call your state radon program or call EPA's Radon Hotline (800-SOS-RADON).

Notice To Kidney Dialysis Patients

Chlorine dioxide is used as a pre-oxidant in water produced from Stafford Water Treatment Plant. Customers undergoing kidney dialysis treatment are advised to use sufficient pre-treatment to ensure chlorine dioxide does not pose a threat to the dialysis process.

Drinking Water Source Assessment for SCWA Groundwater Supply

In January 2001, a Drinking Water Source Assessment for all of the SCWA's water sources was conducted to identify if any potential sources of contamination exist.

The SCWA source water is extracted from groundwater via 6 Rainey Collector Wells and 7 conventional wells located at Wohler and Mirabel, and three wells in the Santa Rosa Plain. The aquifer is recharged by subsurface flows and Russian River water filtering down through the gravel riverbed.

Most of the SCWA water supply comes from wells at Wohler and Mirabel adjacent to the Russian River. These sources are considered to be most vulnerable from wastewater treatment and gravel mining in the area. However, no contaminants associated with these activities were detected in the drinking water.

The SCWA also operates three groundwater wells on the Santa Rosa Plain near Occidental Road, Todd Road and Sebastopol Road. These sources are considered to be most vulnerable from animal feeding operations. However, no contaminants associated with this activity were detected in the drinking water.

A copy of the complete assessment may be reviewed at the California Department of Public Health, Drinking Water Field Operations Branch, 50 D Street, Suite 200, Santa Rosa, CA 95404. You may request a summary of this assessment be sent to you by contacting the Office Representative at 707-576-2145 (voice) or 707-576-2722 (fax).

Drinking Water Source Water Assessment For Stafford Lake

An assessment of watershed activities, which may affect the Stafford Lake source of supply, was performed in 2002 as required by the U.S. Environmental Protection Agency. The watershed activities identified with the highest potential for contamination of Stafford Lake are animal feeding/ waste disposal at the existing stable and dairy operations on the watershed. These activities increase the potential to introduce microbial contaminants and nutrients to Stafford Lake. NMWD actively works with the stable and dairy owners to control their operations and reduce potential contaminants. The Stafford Lake source water is routinely monitored by NMWD to insure the controls are effective.

A copy of the complete assessment is on file at the North Marin Water District office at 999 Rush Creek Place, Novato.

9

MEMORANDUM

To: Board of Directors
From: Pablo Ramudo, Water Quality Supervisor *PR*
Subject: 2015 Consumer Confidence Report- Point Reyes
P:\LAB\WQ Supv\CCR\2015\Memo to board re 2015 ccr PR.doc

June 3, 2016

RECOMMENDED ACTION: Approve Text for 2015 Consumer Confidence Report – Point Reyes

FINANCIAL IMPACT: \$450 (Included in FY 2015/2016 Budget)

The Safe Drinking Water Act requires water suppliers to publish and distribute a report of water quality information to its customers annually. The report contains details and results of monitoring for various contaminants throughout the previous year, a description of the sources of water and treatment regimes, as well as general information about water and its constituents. Customers who normally receive a paper bill will also receive an insert informing them that the report is available on our website and that a paper copy can be requested. Customers who receive an electronic bill will be sent an email with a link to the report on our website. We will initially order 100 printed copies of the report to mail to customers who request it and to have available to customers in our lobby. Additional copies will be ordered if necessary.

RECOMMENDATION

Approve text and design for the 2015 Consumer Confidence Report for Point Reyes subject to any comments received from the Board of Directors.

Approved by GM

W

Date

6/3/2013



NORTH MARIN WATER DISTRICT

2015 ANNUAL WATER QUALITY REPORT • POINT REYES AREA EDITION • PUBLISHED JUNE 2016

In 2015, water provided by North Marin Water District met or surpassed every federal and state drinking water standard.

This Brochure is a snapshot of water quality monitoring performed in 2015. Included are details about where your water comes from, what it contains, and how it compares to regulatory standards. If you have any questions regarding this Water Quality Report, contact Pablo Ramudo, Water Quality Supervisor, (415) 897-4133 or (800) 464-6693



This report is available on our website: www.nmwd.com

North Marin Water District's water is pumped from 3 wells adjacent to Lagunitas creek. Two of these wells are located in Point Reyes Station and one well is located a mile and a half west of Point Reyes Station at the Gallagher ranch. Testing shows that the quality of the water at each of the wells is excellent. Iron and manganese are the principal contaminants found, and although they do not have any negative effects on health, they can affect the color of the water. For this reason, we treat and filter the water to completely remove both of these metals. Chlorine is added as a disinfectant.

Due to their proximity to Lagunitas Creek and Tomales Bay, the two wells in Point Reyes Station are prone to salt water intrusion during very high tides. Once the

salty water is in the aquifer that feeds the wells it can take many months for salinity to return to normal. We typically take steps to minimize the amount of salty water that is drawn into our wells, but the problem has been worsening in the last few years due to sea level rise and a changing bay. The Gallagher well is beyond the reach of the tides and is not affected by saltwater intrusion. A new pipeline to this well, completed in 2014, has given NMWD the ability to draw on this alternate source during occurrences of salinity intrusion in order to provide drinking water that is free from the effects of excess salts.

NMWD is committed to supplying safe water that meets or surpasses strict state and federal standards and achieves the highest standards of customer satisfaction.

Este informe contiene información muy importante sobre su agua potable.

Tradúzcalo o hable con alguien que lo entienda bien. Para más información, llame al (415) 761-8929.

North Marin Water District — Point Reyes Water Service Area

Report of Detected Constituents of Concern

CHEMICAL	UNITS	PHG / [MRDLG] (MCLG)	MCL / [MRDL] (PDWS)	POINT REYES TREATMENT PLANT	POINT REYES DISTRIBUTION SYSTEM	TYPICAL SOURCE OF CHEMICAL
Total Trihalomethanes	µg/l	n/a	80 ¹	n/a	Highest Running Annual average = 71.4 Range = 23.5 – 116	By-product of drinking water disinfection
Haloacetic Acids (HAA5)	µg/l	n/a	60 ¹	n/a	Highest Running Annual average = 19.1 Range = 6.6 – 25.7	By-product of drinking water disinfection
Lead ² (2 rounds of testing)	µg/l	2	(Action level 15)	ND	January 2015: 90th Percentile = 6.2, one sample of 20 above the action level. July 2015: 90th percentile = ND, none of 20 samples above the action level.	Internal corrosion of household water plumbing system and fixtures
Copper ² (2 rounds of testing)	ND	170	(Action level 1300)	ND	January 2015: 90th Percentile = 0.954, one sample of 20 above the action level. July 2015: 90th percentile = 0.995, one sample of 20 above the action level.	Internal corrosion of household water plumbing system and fixtures
Barium	mg/l	2.0	1.0	ND	n/a	Erosion of natural deposits
Fluoride	mg/l	1.0	2.0	Average = 0.12 Range = 0.11 - 0.12	n/a	Erosion of natural deposits
Hexavalent Chromium (2)	ug/l	0.02	10	ND	n/a	Erosion of natural deposits
Chlorine, free	mg/l	[4.0]	[4.0]	n/a	Average = 0.50 Range = 0.05 - 1.10	Drinking water disinfectant
Coliform Bacteria	# of positive samples per month	0	2 or more positive monthly samples	n/a	All Samples negative (91 samples collected)	Naturally present in the Environment

LEGEND

PHG (Public Health Goal): The level of a contaminant in drinking water below which there is no known or expected risk to health. PHGs are set by the California Environmental Protection Agency.

MCLG (Maximum Contaminant Level Goal): The level of a contaminant in drinking water below which there is no known or expected risk to health. MCLGs are set by the U.S. Environmental Protection Agency (USEPA).

MCL (Maximum Contaminant Level): The highest level of a contaminant that is allowed in drinking water. Primary MCLs are set as close to the PHGs (or MCLGs) as is economically and technologically feasible. Secondary MCLs (SMCL) are set to protect the odor, taste, and appearance of drinking water. MCLs are set by the California and/or USEPA.

PDWS (Primary Drinking Water Standard): MCLs (or MRDLs), for contaminants that affect health along with their monitoring and reporting requirements, and water treatment requirements.

MRDLG (Maximum Residual Disinfectant Level Goal): The level of a disinfectant added for water treatment below which there is no known or exposed risk to health. MRDLGs are set by the USEPA.

MRDL (Maximum Residual Disinfectant Level): The level of a disinfectant added for water treatment that may not be exceeded at the consumer's tap.

Action Level: The concentration of a contaminant that, if exceeded, triggers treatment or other requirements that a water system must follow.

90th Percentile = Compliance based on highest value after eliminating the highest 10% of values.

Abbreviations

mg/l = milligrams per liter (parts per million)- equivalent to 4 drops of water in the average sized bathtub.

µg/l = micrograms per liter (parts per billion)- equivalent to 50 drops in an Olympic sized swimming pool.

NTU = Nephelometric Turbidity Units, a measure of suspended material in water

pCi/l = picocuries per liter (a measure of radiation)

n/a = not applicable

ND = Not Detected at testing limit

µmhos/cm = micromhos per centimeter

PCU = platinum cobalt units

North Marin Water District — Point Reyes Water Service Area

Report on Constituents of Interest

CONSTITUENT	UNITS	MCL or (SMCL)	POINT REYES AVERAGE	POINT REYES RANGE	TYPICAL SOURCES
Chloride	mg/l	(500)	34	15 – 61	Runoff/leaching from natural deposits; seawater influence
Color	PCU	(15)	ND	ND	Naturally-occurring organic materials
Hardness	mg/l	n/a	98	61 – 130	Generally found in ground and surface water
Manganese	ug/l	(50)	ND	ND	Leaching from natural deposits
Specific Conductance	µmhos/cm	(1600)	340	260 – 450	Substances that form ions when in water; seawater influence
pH	n/a	(8.5)	7.2	7.2 – 7.4	
Total Dissolved Solids	mg/l	(1000)	180	180 – 190	Runoff/leaching from natural deposits
Turbidity	NTU	5	0.084	0.05 – 0.14	Soil runoff
Sodium	mg/l	n/a	36	13 – 61	Generally found in ground and surface water; seawater influence

Capital Improvement Projects

West Marin System improvements recently completed to improve system water quality and reliability: (1) Olema Pump Station Flood Protection and Instrumentation Upgrade to eliminate potential outages of this facility during spring flooding of Olema Creek, (2) Emergency Generator Connections at various pump stations to improve ease of connection during power outages, (3) Internal Spray System modifications at three different tanks to reduce disinfection byproducts.

Major ongoing projects include: (1) permitting and design for a solids handling facility at the Point Reyes Water Treatment Plant, (2) seismic upgrades to the piping connections at the Point Reyes Water Storage Tanks and (3) permitting for construction of a new 80,000 gallon storage tank in Paradise Ranch Estates to replace the 25,000 gallon tank destroyed by fire years ago.

Concerning Lead and Drinking Water

If present, elevated levels of lead can cause serious health problems, especially for pregnant women and young children. Lead in drinking water is primarily from materials and components associated with private service lines and home plumbing. North Marin Water District is responsible for providing high quality drinking water to your meter, but cannot control the variety of materials used in home plumbing components. When your water has been sitting for several hours, you can minimize the potential for lead exposure by flushing your tap water for 30 seconds to 2 minutes before using water for drinking or cooking. If you are concerned about lead in your water, you may wish to have your water tested. Information on lead in drinking water, testing methods, and steps you can take to minimize exposure is available from the Safe Drinking Water Hotline or at www.epa.gov/safewater/lead.

A Message From the United States Environmental Protection Agency

The sources of drinking water (both tap water and bottled water) include rivers, lakes, streams, ponds, reservoirs, springs, and wells.

As water travels over the surface of the land or through the ground, it dissolves naturally occurring minerals and, in some cases, radioactive materials, and can pick up substances resulting from the presence of animals or from human activity.

Contaminants that may be present in source water include:

- **Microbial Contaminants**, such as viruses and bacteria, that may come from sewage treatment plants, septic systems, agricultural livestock operations, and wildlife.
- **Inorganic Contaminants**, such as salts and metals, that can be naturally occurring or result from urban stormwater runoff, industrial or domestic wastewater discharges, oil and gas production, mining or farming.
- **Pesticides and Herbicides**, that may come from a variety of sources such as agriculture, urban stormwater runoff, and residential uses.
- **Organic Chemical Contaminants**, including synthetic and volatile organic chemicals, that are by-products of industrial processes and petroleum production, and can also come from gas stations, urban stormwater runoff, agricultural applications and septic systems.
- **Radioactive Contaminants**, that can be naturally-occurring or be the result of oil and gas production and mining activities.

In order to ensure that tap water is safe to drink, the U.S. Environmental Protection Agency (USEPA) and the California Department of Public Health (CDPH) prescribe regulations that limit the amount of certain contaminants in water provided by public water systems. DHS regulations also establish limits for contaminants in bottled water that provide the same protection for public health.

Drinking water, including bottled water, may reasonably be expected to contain at least small amounts of some contaminants. The presence of contaminants does not necessarily indicate that water poses a health risk. More information about contaminants and potential health effects can be obtained by calling the USEPA's Safe Drinking Water Hotline (1-800- 426-4791).

Some people may be more vulnerable to contaminants in drinking water than the general population. Immuno-compromised persons such as persons with cancer undergoing chemotherapy, persons who have undergone organ transplants, people with HIV/AIDS or other immune system disorders, some elderly, and infants can be particularly at risk from infections. These people should seek advice about drinking water from their health care providers. USEPA/Centers for Disease Control (CDC) guidelines on appropriate means to lessen the risk of infection by *Cryptosporidium* and other microbial contaminants are available from the Safe Drinking Water Hotline (1-800- 426-4791).

Source Water Assessment

An Assessment of watershed activities, which may affect the Point Reyes source of supply, was completed in July 2002 as required by the US Environmental Protection Agency. The activities identified with the highest potential for contamination of the Point Reyes groundwater supply are salt water intrusion and activities associated with the operation of the US Coast Guard housing wastewater system and maintenance facility area. These activities increase the potential to introduce chemical and microbial contaminants into the local groundwater. The Point Reyes groundwater is routinely monitored by NMWD. No contaminants have been detected with the exception of occasional increases in salt concentrations. Water produced at the Point Reyes water treatment plant meets federal and state water quality requirements.

A copy of the complete assessment is on file at the North Marin Water district office at 999 Rush Creek Place, Novato.

Radon In Air

Radon is a radioactive gas that can move from decomposed granite soils into a home through cracks and holes in the foundation. Radon can also get into indoor air when running tap water for showering and other household activities. In most cases, radon from tap water is a small source of radon in air. Radon is a known human carcinogen. It can lead to lung cancer. Drinking water containing radon may also cause increased risk of stomach cancer. There is no federal regulation for radon levels in drinking water. Exposure over a long period of time to air transmitting radon may cause adverse health effects. If you are concerned about radon in your home, **test the air in your home!** Testing is inexpensive and easy. For additional information, call your state radon program or call EPA's Radon Hotline (800-SOS-RADON).

Board of Directors

John C. Shoonover
President

Stephen Petterle
Vice President

Jack Baker

Rick Fraites

Dennis Rodoni


The Board of Directors meets on the first and third Tuesday of the month, 7:00 pm at NMWD Administrative office, 999 Rush Creek Place, Novato, CA 94945.

On June 28, 2013, the Board will meet at 7:00 pm in Point Reyes Station to review the Point Reyes budget and Point Reyes water issues.



10

MEMORANDUM

To: Board of Directors
 From: David L. Bentley, Auditor-Controller 
 Subj: Proposed Increase in Oceana Marin Sewer Connection Fee
t:\ackword\from increase fy17.docx

June 3, 2016

RECOMMENDED ACTION: Authorize Staff to notice the public that a connection fee increase is proposed and will be considered at the June 28 public hearing in Point Reyes Station.

FINANCIAL IMPACT: None at this time – If approved Oceana Marin is projected to see an annual revenue increase of \$14,800

The connection fee for Oceana Marin Sewer was last increased effective August 1 2009. Staff has incorporated the Capital Improvement Projects (CIP) recommended in the January 2016 Nute Engineering Oceana Marin Master-Plan Update and, accordingly, recommends a substantial increase in the connection fee.

	<u>Existing</u>	<u>Proposed</u>	<u>% Increase</u>
Oceana Marin Sewer	\$15,200	\$30,000	97%

Anticipated CIP cost and projected growth for Oceana Marin Sewer were reviewed and updated as shown on the attached Connection Fee Calculation schedule. Twenty-five percent of the projects identified in the Master Plan Update are allocated to new development, as well as 100% of the cost of upgrading/expanding the Effluent Disposal System. The remaining 75% of the CIP cost will be paid by existing customers through the sewer service charge and hopefully some grant funding. The connection fee would be effective July 1, 2016 and would apply to new connectors on the remaining 38 lots in OM-3 (Units 1 or 5) as the owners in OM-1 Units 3 & 4 paid a tax to cover their share of improvements. The proposed fee would generate \$14,800 annually in additional revenue $((\$30,000 - \$15,200) \times 1 \text{ new equivalent dwelling unit annually})$.

Recommendation

- 1) Mail the attached letter to the owners of the vacant lots in Oceana Marin subject to the connection fee, as well as the Oceana Marin Association, local builder's associations, and the Marin Association of Realtors, advising that a connection fee increase is proposed, and;
- 2) Set a public hearing for June 28, 2016, in Point Reyes Station to consider adoption of the proposed increase.

June 8, 2016

Re: Oceana Marin Sewer Connection Fee Increase

Ladies and Gentlemen:

In order to meet the planned wastewater treatment and disposal needs of the Oceana Marin subdivision in Dillon Beach, the North Marin Water District must invest in new facilities. The District traditionally allocates the incremental cost of expansion to "new" growth in the form of a sewage facilities connection charge. The current sewage facilities connection charge for a typical single-family residence, or equivalent unit, is \$15,200. An Updated Master Plan of the Oceana Marin Sewer System indicates that an increase in the connection fee is required. You can view the Master Plan Update on the NMWD website www.nmwd.com (click on Agenda, January 19, 2016 Supporting Documents, Item #10). On June 28, 2016, the Board of Directors will hold a public hearing to consider an increase in the sewage facilities connection charge to \$30,000 per equivalent unit. The fee was last increased in 2009.

The District believes the connection fee increase is essential in order to keep up with necessary capital investments to meet Oceana Marin's wastewater treatment and disposal capacity requirements. The need for improvements to the 3,890' force main and expansion of the subsurface disposal field are major projects on the horizon for this small system (230 existing customers). It is important that new growth pay its fair share of this and other planned improvements. The Connection Fee Calculation is included on the back side of this letter.

The proposed effective date for the new sewage facilities connection charge is July 1, 2016. All complete applications for new service that are received, processed and approved by the Board of Directors (as applicable) prior to July 1, 2016, will be processed at the current sewage facilities connection charge.

The public hearing is being advertised in the June 15 and June 22 edition of the Point Reyes Light. You are cordially invited to comment or come to the hearing and voice your views.

Date: June 28, 2016

Time: 7:00 PM

**Place: Point Reyes Dance Palace
503 B Street, Point Reyes Station, CA**

Should you need additional information, please call 415.897.4133

Sincerely,

Chris DeGabriele
General Manager

**Oceana Marin Sewer System
Connection Fee Calculation**

t:\ac\excel\budget\wm17\wm17.xlsx\om conn fee (2)

6/1/16

<u>Nute Engineering 1/13/16 Oceana Marin Wastewater Master Plan Update</u>		
Sewer collection system improvements primarily to reduce I/I		\$466,300
Main pump station improvements to improve reliability		\$263,000
Force main improvements to improve redundancy		\$1,270,000
Pond dredging		\$352,000
Pond berm repair with riprap		\$670,000
Pond electrical system upgrade		\$68,000
Additional studies of different aspects of the wastewater system		\$31,300
Total Estimated Capital Improvement Program		<u>\$3,120,600</u>
<u>Connection Fee Calculation</u>		
% of CIP Attributable to Growth		25%
\$ Attributable to Growth (CIP X 25%)		\$780,150
Effluent Disposal System Upgrade		\$360,000
Total Attributable to Growth		<u>\$1,140,150</u>
Remaining Parcels Subject to Connection Fee		38
Calculated Connection Fee/Dwelling Unit		<u>\$30,004</u>
Existing Connection Fee		\$15,200
% Increase		97%

11

MEMORANDUM

ITEM #11

To: Board of Directors

June 3, 2016

From: Pablo Ramudo, Water Quality Supervisor *PR*

Subject: Point Reyes System Overview- Focus on Water Quality
p:\lab\wq supv\2016\memo pr system overview.doc

RECOMMENDED ACTION: Information only.

FINANCIAL IMPACT: None at this time

The NMWD Point Reyes potable water system delivers water that meets or exceeds state and federal standards for quality. This presentation is an overview of the system's components (source wells, treatment plant, and distribution system) with a focus on how they are operated to maximize water quality and protect public health.

[Presentation]

12

MEMORANDUM

To: Board of Directors

June 3, 2016

From: David L. Bentley, Auditor-Controller

 Subj: Initial Review – FY17 West Marin Water and Oceana Marin Sewer Budgets
 t:\act\word\budget\wm\17\wm17 initial review.docx
RECOMMENDED ACTION: Initial Review & Provide Direction to Staff**FINANCIAL IMPACT:** None at this time. Upon adoption, the FY17 Budgets would see:

West Marin Water System Rate Increase	\$39,000
West Marin Water System Expenditure Plan	\$1,257,000
Oceana Marin Sewer System Rate Increase	\$18,000
Oceana Marin Sewer System Expenditure Plan	\$380,000
Oceana Marin Sewer Connection Fee Increase.....	\$14,800

Following for your initial review are the budgets for the West Marin Water System and the Oceana Marin Sewer System proposed for FY 2016/17 (FY17). Proposed for the West Marin Water System customers is a rate increase averaging 5%. Proposed for the Oceana Marin Sewer System is a 10% rate increase, and a 97% increase in the connection fee.

INCREASE PROPOSAL DETAIL**Water Rates**

A 5% increase for the typical residential customer is recommended, comprised of a 7% commodity rate increase and no increase in the bimonthly service charge, which stands at \$30 bimonthly for the typical customer with a 5/8" meter (with the exception that Paradise Ranch Estates customers pay \$46 as their service charge includes the cost of amortizing the \$14,000 annual revenue bond¹ debt service applicable exclusively to customers residing within the PRE subdivision). The proposed West Marin Water increase would total \$31 annually (\$2.58 per month) for the typical residential customer (see Rate Increase Analysis on page 6 of the budget document).

A letter was mailed to each West Marin Water customer on May 13, 2016 advising of the proposed rate increase and extending an invitation to attend the public hearing and/or exercise the right to protest the proposed increase (see page 10). If enacted, the proposed increase is expected to generate \$38,000 in additional revenue next fiscal year.

Annual 5% increases are included in the 5-year financial plan for FY18 and beyond (see

¹ The 40-year 5% PRE Revenue Bond issued in 1980 will be fully amortized in April 2020.

page 4) to help pay for \$5.7 million in Capital Improvement Projects scheduled over the next five years as the District moves forward with replacement of the tank that was destroyed in the Vision Fire (\$500,000), an additional well at the Gallagher site (\$300,000), Replacement of PRE Tank #1 (\$250,000), and Upgrade of the Treatment Plant (\$4,050,000). The financial plan anticipates that \$4 million will be borrowed to construct these projects over the coming five years.

Sewer Rates

The Oceana Marin Sewer System held a cash balance of \$475,000 at April 30, 2016. The Nute master plan update presented to the Board in January identified \$3.1 million in needed improvements to the system. The Five-Year Financial Plan includes incorporates \$1.2 million over the 5-year period. A 10% (\$7/month) increase is proposed for FY17, which will generate an additional \$20,000 per year. Annual 10% increases are included in the 5-year financial plan for FY18 and beyond to help pay for CIP program.

An increase in the Sewer Service Charge, which is collected on the Property Tax roll, must be adopted by ordinance, which requires readings at two Board meetings and publication twice. A summary of the ordinance will be published in the Point Reyes Light on June 11 and June 25, and customers have been invited to attend the June 28 meeting in Point Reyes Station. The ordinance summary to be published is included on page 21. The Oceana Marin letter noticing and inviting customers to the public hearing was mailed on May 31, 2016.

Connection Fees

The West Marin Water connection fee was last increased in August 2009. In November 2014 the Board reviewed this charge based on the updated West Marin Water Master Plan, and found the existing connection fee adequate.

A 97% increase is recommended for the Oceana Marin connection fee based on the Nute Master-Plan update (calculation is included in separate agenda item).

One new connection is budgeted for both West Marin Water and Oceana Marin Sewer next fiscal year.

BUDGETED SYSTEM IMPROVEMENT PROJECTS

Significant Improvement Projects budgeted for the coming year, from page 1 of the budget package, include:

Water

- \$450,000 to complete the bulk of the work on the \$525,000 replacement of the PRE Tank burned in the Vision Fire.
- \$75,000 to replace the green-sand filter media in one of the two treatment plant filters (another \$75,000 will be expended in FY18 to replace the media in the second filter).
- \$100,000 to permit and commence construction of the \$300,000 project to install a second well on the Gallagher site.

Sewer

- \$40,000 is included for continued infiltration repair work to prevent rainwater from leaking into the collection system.
- \$50,000 is included as the first half of the cost to design and install an 8th trench in the disposal field.
- \$50,000 is included to commence the \$300,000 project to reline 3,000' of 6" AC pipe.

Future Projects

The West Marin Water System Five-Year Financial Plan shows the \$525,000 PRE Tank 4A replacement will be completed in FY18. The \$1.25 million construction of the treatment plant solids handling facility is also scheduled to commence in FY18. \$2.8 million to design and construct Treatment Plant Improvements is scheduled for FY20.

For Oceana Marin Sewer, \$40,000 in continued work on infiltration repair is forecast each year into the future. \$500,000 is included commencing in FY20 to install the first of a 3-phase project to construct a parallel force main, estimated to cost \$1.3 million at completion.

WEST MARIN WATER SYSTEM OPERATING BUDGET

You will note from page 3 of the budget that the proposed West Marin Water System Budget projects a cash deficit next fiscal year of \$391,000. This deficit assumes 100% of the \$625,000 Capital Improvement Project Budget is expended, which does not typically occur. The proposed budget projects one new service to be added to the system each year into the future,

in line with the slow growth we have seen recently. A history of West Marin Water system growth is shown graphically on page 7.

FY16 water sales volume is budgeted to increase 3% compared with the current year estimated actual. Unlike the current fiscal year, FY17 will not include mandatory water use restrictions, and normal rainfall is assumed. The West Marin system is projected to consume 62 million gallons (MG) next year, compared to 60MG estimated for the current fiscal year. Average annual consumption over the past decade is 78MG. The forecast assumes water sales volume will rise to 65MG in FY19 and remain static into the future as conservation programs (including water rate increases) continue to induce more efficient use of water. Historical consumption data is shown on page 8.

Operating expenditures, before depreciation, are budgeted to increase 3% from the FY16 adopted budget, an increase of \$14,000. A graphical history of operating expenditures is included on page 9. The 2016 update of the Coastal Area Annual Water Cost Comparison (page 13) shows that, even with the proposed 5% rate increase, the water cost for NMWD's West Marin customers remains below that paid by the customers of the other seven coastal agencies surveyed.

OCEANA MARIN SEWER OPERATING BUDGET

The proposed Oceana Marin Sewer budget shown on page 14 includes a \$7/month (10% - to \$78/month) increase in the sewer service charge. One new connection is budgeted for next fiscal year, which is Oceana Marin's average over the past five years, as shown in the chart on page 17. Next year's budget projects operating expenditures, before depreciation, to increase less than 1% from the current year budget.

A graphical history of Oceana Marin operating expenditures is shown on page 18. The 2016 update of the Coastal Area Annual Sewer Cost Comparison (page 22) shows that, when the County 1% allocation of AB8 tax revenue is included as a ratepayer cost, and assuming approval of the recommended 10% sewer service charge increase, Oceana Marin sewer service cost will continue to rank second among the six coastal sewer agencies surveyed.

The West Marin Water and Oceana Marin Sewer budgets will be reviewed again at the June 21 meeting. A public hearing to consider the proposed water rate increases and to adopt the water and sewer budgets is then scheduled for June 28 in Point Reyes Station.

Proposed
BUDGET

Initial Review

**West Marin Water
&
Oceana Marin Sewer**
FISCAL YEAR
2016-17

NORTH MARIN WATER DISTRICT

999 RUSH CREEK PLACE, NOVATO, CA

TABLE OF CONTENTS

WEST MARIN WATER & OCEANA MARIN SEWER

PROPOSED 2016/17 BUDGETS

Capital Improvement Projects

West Marin Water/Oceana Marin Sewer 5-Year Plan	1
---	---

West Marin Water

Proposed FY17 Budget	3
5-Year Financial Plan	4
<u>Supplementary Charts and Schedules</u>	
Rate Increase Analysis	6
Active Service Connections	7
Historical Water Consumption	8
Historical Operating Expenditures	9
Customer Letter Noticing the Proposed Increase	10
2016 Coastal Area Water Cost Comparison	13

Oceana Marin Sewer

Proposed FY17 Budget	14
5-Year Financial Plan	15
<u>Supplementary Charts and Schedules</u>	
Active Sewer Connections	17
Historical Operating Expenditures	18
Customer Letter Noticing the Proposed Increase	19
Notice of Public Hearing	21
2016 Coastal Area Sewer Cost Comparison	22

PROPOSED CAPITAL IMPROVEMENT PROJECTS

5/31/16

Novato Service Area Recycled Water

t:\acl\excel\budget\17\5 yr cip fy17.xlsx\5 yr ip

		FY16 Budget	FY16 Est Actual	FY17	FY18	FY19	FY20	FY21
7. WEST MARIN WATER SYSTEM								
2.7153.00	a. Upsize 4" Pipe from Bear Valley Tanks (8"@900')	\$100,000	\$110,000					
2.6602.23	b. Replace Pump in Well #2							
2.6257.20	c. Tanks #2 & #3 Seismic Piping Upgrade	\$30,000	\$30,000					
2.6263.20	d. Replace PRE Tank #4A (25K gal w/82K gal)	\$50,000	\$25,000	\$450,000	\$50,000			
2.8850.xx	e. PB Replace in Sync w/ County Paving	\$50,000	\$0		\$50,000		\$50,000	
2.7160.00	f. Green Sand Filter Media Replace	\$75,000	\$0	\$75,000	\$75,000			
2.6601.32	g. TP Solids Handling				\$625,000	\$620,000		
2.6605.23	h. Abandon Downey Well				\$50,000	\$50,000		
	i. Rehab Coast Guard Well #2					\$275,000		
	j. New Gallagher Well #2			\$100,000			\$200,000	
	k. Treatment Plant Modifications Design/Construct (Note 6)						\$2,800,000	
	l. PRE Tank #1 Replacement							\$250,000
	m. Other West Marin Water System Expenditures		\$55,000					
		\$305,000	\$220,000	\$625,000	\$850,000	\$945,000	\$3,050,000	\$250,000

8. OCEANA MARIN SEWER SYSTEM								
8.8672.28	a. Infiltration Repair	\$40,000	\$10,000	\$40,000	\$40,000	\$40,000	\$40,000	\$40,000
	b. Design/Install 8th Disposal Trench (300')			\$50,000	\$50,000			
	c. Tahiti Way Lift Pumps Rebuild (2) (every 5 yrs)			\$20,000	\$20,000			
	d. Tahiti Way Power Relocation			\$20,000				
	e. North St Lift Station Comm Upgrade			\$30,000				
	f. Parallel Force Main (1st of 3 Segments)		\$30,000				\$100,000	\$400,000
	g. ACP Sewer Reline (6"@ 3,000')			\$50,000	\$250,000			
		\$40,000	\$40,000	\$210,000	\$360,000	\$40,000	\$140,000	\$440,000

SUMMARY - GROSS PROJECT OUTLAY

West Marin Water	\$305,000	\$220,000	\$625,000	\$850,000	\$945,000	\$3,050,000	\$250,000
Oceana Marin Sewer	\$40,000	\$40,000	\$210,000	\$360,000	\$40,000	\$140,000	\$440,000
GROSS PROJECT OUTLAY	\$345,000	\$260,000	\$835,000	\$1,210,000	\$985,000	\$3,190,000	\$690,000

PROPOSED CAPITAL IMPROVEMENT PROJECTS

5/31/16

Novato Service Area Recycled Water

t:\acl\excel\budget\17\5 yr cip fy17.xlsx\5 yr ip

	FY16 Budget	FY16 Est Actual	FY17	FY18	FY19	FY20	FY21
LESS FUNDED BY LOANS/GRANTS/OTHER							
f. WM Treatment Plant Solids Handling (Note 5)	\$0	\$0	\$0	(\$625,000)	(\$600,000)	\$0	\$0
g. WM TP Modific Design/Construct (Note 6)	\$0	\$0	\$0	\$0	\$0	(\$2,800,000)	\$0
	\$0	\$0	\$0	(\$625,000)	(\$600,000)	(\$2,800,000)	\$0
<u>SUMMARY - NET PROJECT OUTLAY</u>							
West Marin Water	\$305,000	\$220,000	\$625,000	\$225,000	\$345,000	\$250,000	\$250,000
Oceana Marin Sewer	\$40,000	\$40,000	\$210,000	\$360,000	\$40,000	\$140,000	\$440,000
NET PROJECT OUTLAY	\$345,000	\$260,000	\$835,000	\$585,000	\$385,000	\$390,000	\$690,000
Total Number of District Projects	6	8	9	9	4	5	3

Note 5 - West Marin Water Treatment Plant Solids Handling Facility partially funded by bank loan. Additional \$600K to be borrowed in FY17 to complete project.

Note 6 - \$2.8M WM TP Project funded by debt and /or grant funds.

WEST MARIN WATER
BUDGET SUMMARY
Fiscal Year 2015/16

	Proposed Budget 2016/17	Estimated Actual 2015/16	Adopted Budget 2015/16
OPERATING INCOME			
1 Water Sales	\$801,000	\$706,000	\$777,000
2 Misc Service Charges	7,000	7,000	7,000
3 Total Operating Income	\$808,000	\$713,000	\$784,000
OPERATING EXPENDITURES			
4 Source of Supply	\$22,000	\$20,000	\$24,000
5 Pumping	37,000	26,000	38,000
6 Operations	42,000	43,000	46,000
7 Water Treatment	147,000	144,000	134,000
8 Transmission & Distribution	140,000	108,000	120,000
9 Consumer Accounting	23,000	24,000	26,000
10 Water Conservation	20,000	7,000	21,000
11 General Administration	73,000	61,000	81,000
12 Depreciation Expense	190,000	190,000	180,000
13 Total Operating Expenditures	\$694,000	\$623,000	\$670,000
14 NET OPERATING INCOME (LOSS)	\$114,000	\$90,000	\$114,000
NON-OPERATING REVENUE/(EXPENSE)			
15 PR-2 County Tax Allocation	\$48,000	\$47,000	\$45,000
16 Miscellaneous Revenue	4,000	4,000	4,000
17 Interest Revenue	6,000	9,000	5,000
18 Bond & Loan Interest Expense	(33,000)	(37,000)	(36,000)
19 Miscellaneous Expense	(28,000)	(33,000)	(58,000)
20 Total Non-Operating Income/(Expense)	(\$3,000)	(\$10,000)	(\$40,000)
21 NET INCOME/(LOSS)	\$111,000	\$80,000	\$74,000
OTHER SOURCES/(USES) OF FUNDS			
22 Add Depreciation Expense	\$190,000	\$190,000	\$180,000
23 Connection Fees	0	0	23,000
24 Capital Improvement Projects	(625,000)	(220,000)	(305,000)
25 Bond & Loan Principal Payments	(67,000)	(63,000)	(64,000)
26 Total Other Sources/(Uses)	(\$502,000)	(\$93,000)	(\$166,000)
27 CASH INCREASE/(DECREASE)	(\$391,000)	(\$13,000)	(\$92,000)

WEST MARIN WATER

5-Year Financial Forecast

	Actual 2013/14	Actual 2014/15	Est Actual 2015/16	Projected 2016/17	Projected 2017/18	Projected 2018/19	Projected 2019/20	Projected 2020/21
# BASIC DATA								
1 Active Meters	776	778	779	780	781	782	783	784
2 Avg Commodity Rate/1,000 Gal	\$8.12	\$8.74	\$9.00	\$9.64	\$10.12	\$10.62	\$11.16	\$11.71
3 Potable Consumption (MG)	78	64	60	62	64	65	65	65
INCOME								
4 Commodity Charge	\$633,904	\$562,195	\$539,000	\$634,000	\$648,000	\$691,000	\$725,000	\$761,000
5 Bimonthly Service Charge	169,038	166,938	167,000	167,000	175,000	184,000	193,000	203,000
6 Connection Fee	22,800	22,800	0	23,000	23,000	23,000	23,000	23,000
7 PR-2 County Tax Allocation	42,119	45,378	47,000	48,000	49,000	50,000	52,000	54,000
8 OL-2 G.O. Bond Tax	3,064	661	0	0	0	0	0	0
9 Interest	3,292	5,027	9,000	6,000	4,000	4,000	4,000	3,000
10 Miscellaneous	10,453	10,572	11,000	11,000	11,000	11,000	11,000	11,000
11 TOTAL INCOME	\$884,670	\$813,571	\$773,000	\$889,000	\$910,000	\$963,000	\$1,008,000	\$1,055,000
EXPENDITURES								
12 Operating Expenditures	\$474,270	\$469,147	\$432,000	\$504,000	\$519,000	\$535,000	\$551,000	\$568,000
13 Water Purchased from MMWD	0	6,651	0	0	0	0	0	0
14 Miscellaneous	35,525	3,363	34,000	35,000	5,000	5,000	5,000	5,000
15 Bond & Loan Debt Service	103,222	104,576	100,000	102,000	100,000	140,000	336,000	323,000
16 TOTAL EXPENDITURES	\$613,017	\$583,737	\$566,000	\$641,000	\$624,000	\$680,000	\$892,000	\$896,000
NET INCOME	\$271,653	\$229,834	\$207,000	\$248,000	\$286,000	\$283,000	\$116,000	\$159,000
OTHER SOURCES/(USES)								
17 Capital Improvement Projects	(\$277,492)	(\$1,279,605)	(\$220,000)	(\$625,000)	(\$850,000)	(\$945,000)	(\$3,050,000)	(\$250,000)
18 Grant/Loan Proceeds	266,060	1,177,912	0	0	625,000	600,000	2,800,000	0
19 Net Change in Working Capital	(46,404)	99,793	0	0	0	0	0	0
20 INCREASE (DECREASE) IN CASH	\$213,817	\$227,934	(\$13,000)	(\$377,000)	\$61,000	(\$62,000)	(\$134,000)	(\$91,000)
CASH BALANCE								
21 Operating Reserve	\$0	\$188,241	\$395,000	\$620,000	\$682,000	\$620,000	\$486,000	\$410,000
22 System Expansion Reserve	808,832	823,221	603,000	1,000	0	0	0	0
23 Liability Contingency Reserve	73,696	99,000	99,000	99,000	99,000	99,000	99,000	99,000
24 Bond Redemption Reserve	30,000	30,000	30,000	30,000	30,000	30,000	30,000	15,000
25 TOTAL CASH BALANCE	\$912,528	\$1,140,462	\$1,127,000	\$750,000	\$811,000	\$749,000	\$615,000	\$524,000
26 Depreciation Expense	\$154,749	\$157,937	\$190,000	\$190,000	\$200,000	\$214,000	\$230,000	\$281,000

KEY

West Marin Water includes the communities of Point Reyes Station, Inverness Park, Olema, Bear Valley, Silver Hills and Paradise Ranch Estates (PRE).

- 1 Assumes annual increase of 1 connection per year.
- 2 Commodity rate increase of 5% is proposed effective 7/1/16. Annual 5% Commodity and Bimonthly Service Charge increases shown thereafter.
- 3 Consumption projection assumes 62MG in FY16 and FY17, and 65MG annually thereafter.
- 4 FY17 commodity charge revenue includes \$37,000 in drought surcharge revenue generated from the temporary drought surcharge.
- 5 Bimonthly service charge shown to increase 5% annually after FY17. Details of the rate increase structure to be determined at annual budget hearings.
- 6 The connection fee was set at \$22,800 per equivalent dwelling unit effective August 1, 2010.
- 7 County tax allocation enacted subsequent to Prop 13 to compensate for O&M tax revenue previously received. PR-2 County Tax allocation is projected to increase 3% per year.
- 8 Olema GO Bond Tax terminated with payoff of Olema Bond January 1, 2015.
- 9 Projected available funds invested at 0.50%
- 10 Turn-on, set-up, backflow device, Horizon CATV site lease & other miscellaneous charges.
- 12 3% annual increase in Operating Expenditures assumed after FY16.
- 14 FY16 Includes \$58K for Gallagher Well#2 Hydrologic Study.
- 15 Comprised of three 40-year 5% bonds all purchased by the Farmers Home Administration: 1) 1975 OL-2 \$70,000 GO bond paid off in 2015; 2) 1980 PRE-1 \$240,000 revenue bond due 2020; 3) 1981 PR-6 \$217,800 revenue bond due 2021; plus an Economic Development Administration \$46,000 5% 40-year loan due 2017. On June 30, 2012, WM Water was allocated \$1 million from a Bank of Marin loan to finance construction of a Treatment Plant Solids Handling Facility, with repayment commencing FY13. FY19 includes debt service on \$600K loan to finance completion of Solids Handling Facility.
- 16 Total Expenditures excludes depreciation.
- 17 Capital Improvement Projects. See 5-year Capital Improvement Projects Plan.
- 18 FY14 & FY15 Gallagher Pipeline grant of \$1.4 million; FY19 \$600,000 loan to complete the Solids Handling and PRE Storage projects.
- 21 Operating Reserve should be comprised of a minimum of 4 months of operating expenditures as recommended by the District's financial advisors.
- 22 System Expansion Reserve is composed of connection fee revenue and unexpended Bank of Marin loan funds.
- 23 Liability Contingency Reserve - \$90,000 is West Marin Water's pro-rata share (3.6%) of the District's \$2.5 million liability contingency fund, available to pay liability claims arising within the West Marin water system. \$8,885 was added in Dec 2006 from sale of 2 surplus parcels in Inverness Park.
- 24 Bond Redemption Reserve is comprised of one year of Revenue Bond debt service (\$30K) for PR-6 & PRE-1 bonds as required by bond covenant plus tax receipts held in the Marin County treasury.

on

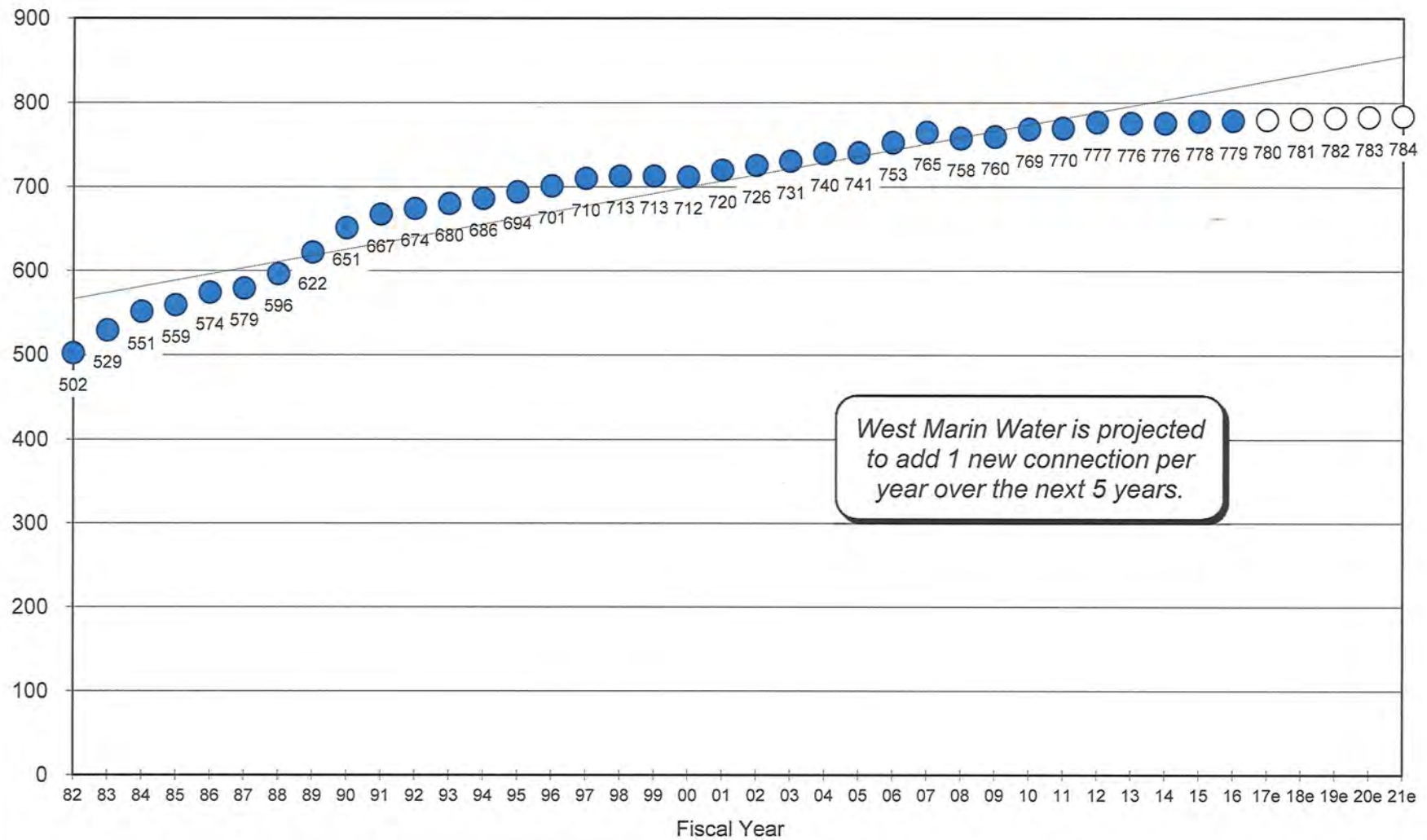
West Marin Water Rate Increase Analysis

t:\ac\excel\budget\wm\rate increase analysis.xls\fy17

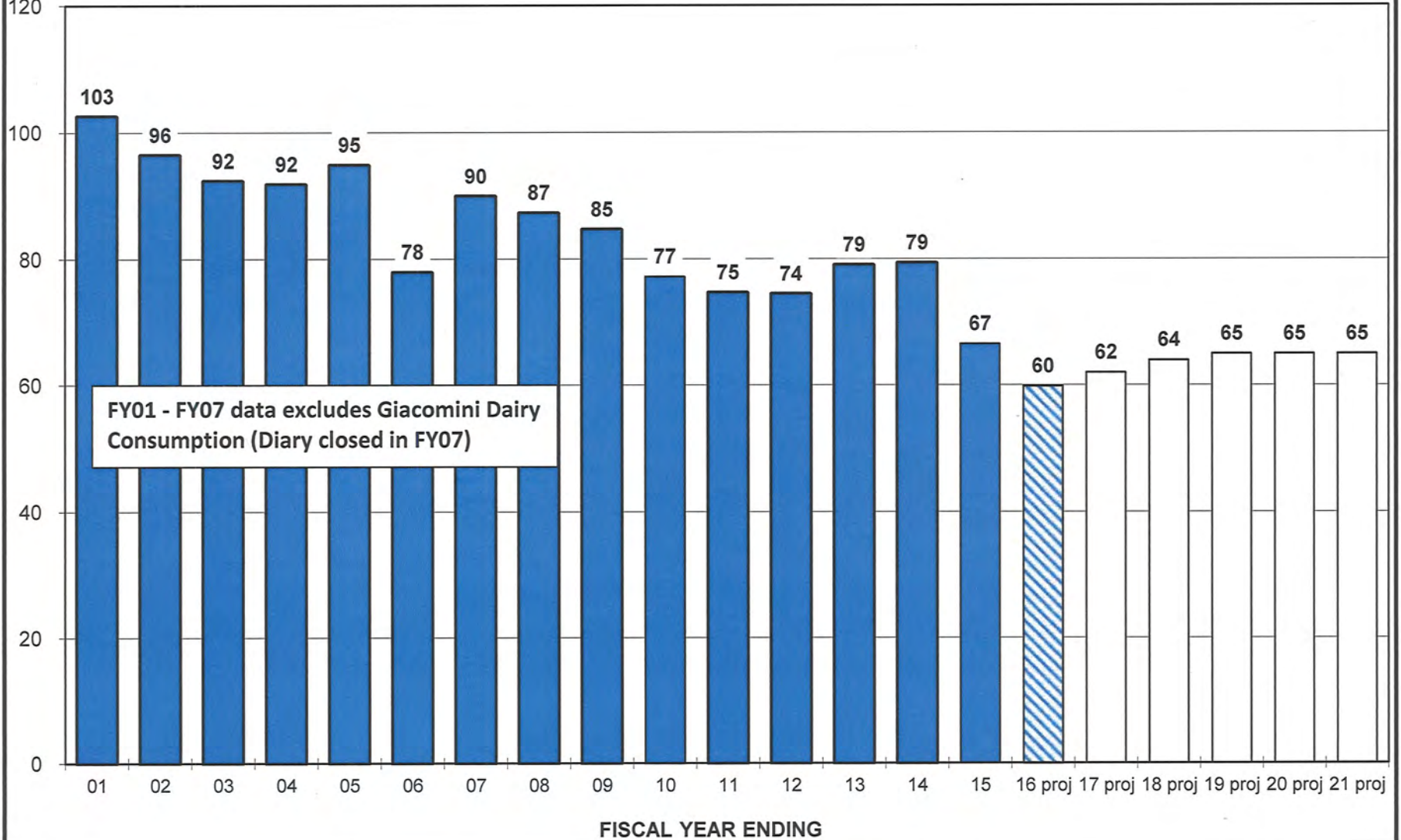
4/22/16

Annual Residential Impact (based on 55,400 gallons water use)										
		Commodity Rate	Annual Use		Annual Service		Annual Tax		Total Annual	Annual Increase \$ %
Point Reyes Station	Current	\$7.61	\$422	+	\$180	+	\$57	=	\$658	
	Proposed	\$8.14	\$451	+	\$180	+	\$57	=	\$688	\$29 4.5%
Inverness Park, Bear Valley, Silver Hills	Current	\$7.81	\$433	+	\$180	+	\$57	=	\$669	
	Proposed	\$8.35	\$463	+	\$180	+	\$57	=	\$699	\$30 4.5%
Olema	Current	\$8.36	\$463	+	\$180	+	\$0	=	\$643	
	Proposed	\$8.94	\$495	+	\$180	+	\$0	=	\$675	\$32 5.0%
PRE Zone A	Current	\$7.81	\$433	+	\$276	+	\$0	=	\$709	
	Proposed	\$8.35	\$463	+	\$276	+	\$0	=	\$739	\$30 4.2%
PRE Zone B	Current	\$12.69	\$703	+	\$276	+	\$0	=	\$979	
	Proposed	\$13.58	\$752	+	\$276	+	\$0	=	\$1,028	\$49 5.0%
Outside Services	Current	\$10.66	\$591	+	\$180	+	\$0	=	\$771	
	Proposed	\$11.40	\$632	+	\$180	+	\$0	=	\$812	\$41 5.3%
Weighted Average	Current	\$8.38							\$701	
	Proposed	\$8.96							\$733	\$32 4.6%

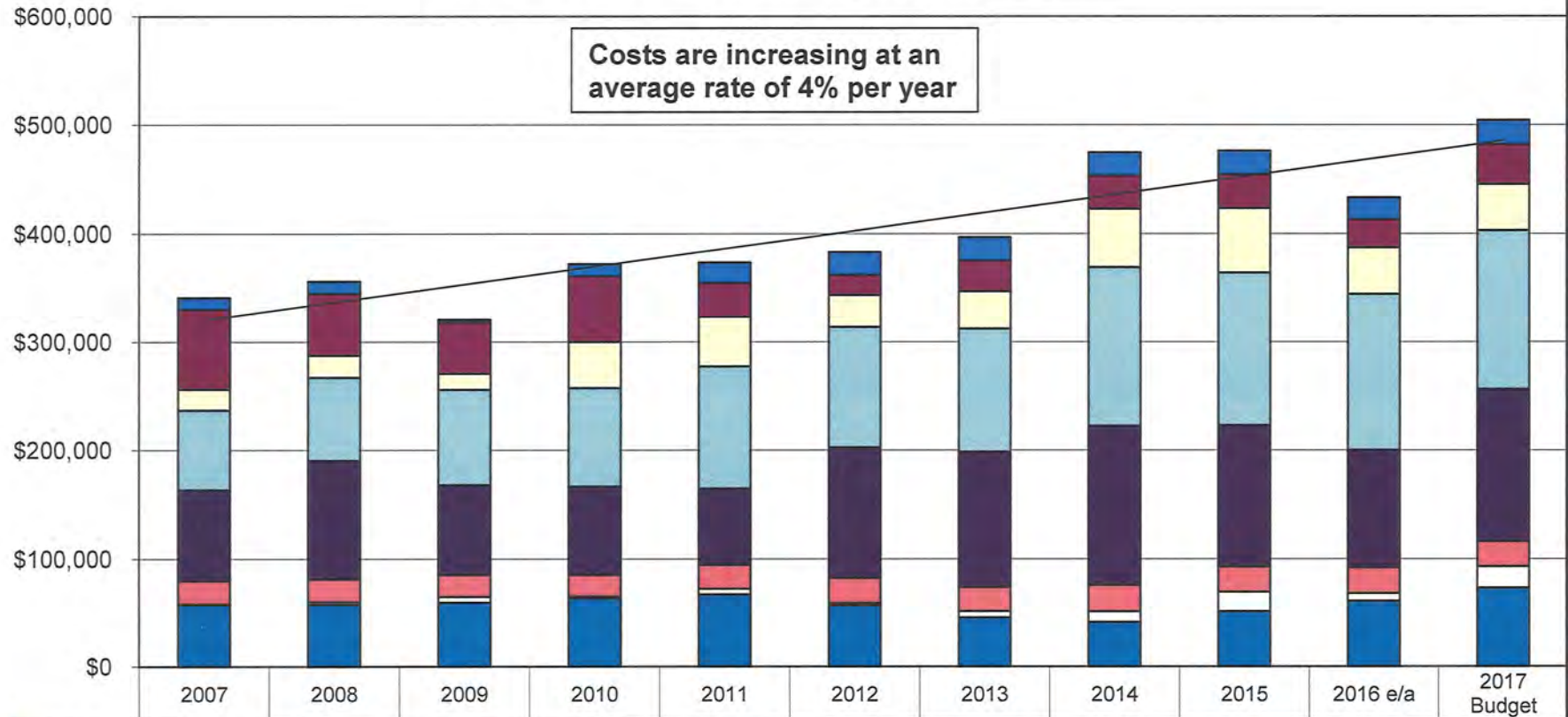
West Marin Water Active Service Connections @ June 30



West Marin Potable Water Billed Consumption Net of Giacomini Dairy

MG
120

West Marin Water Operating Expenditures





May 13, 2016

999 Rush Creek Place
P.O. Box 146
Novato, CA 94948

PHONE
415.897.4133

FAX
415.892.8043

EMAIL
info@nmwd.com

WEB
www.nmwd.com

RE: Notice of Proposed Water Cost Increase – West Marin Service Area

Dear Customer:

This letter is to advise you of **proposed increases to West Marin water rates** that would take effect on July 1, 2016. It also provides information about a **Public Hearing scheduled on June 28, 2016**, at which time written and oral comments will be considered and a vote on the increase will be taken by the North Marin Water District Board of Directors.

HOW MUCH IS THE PROPOSED RATE INCREASE?

A 5% increase in the cost of water is proposed, which would result in an average increase of \$2.67 per month (\$32 annually) for the typical (median) single-family residential customer who consumes 55,400 gallons of water annually. Those using less than the median would see an increase less than \$32 annually, and those using more would pay more. The increase for non-residential customers (commercial, institutional and irrigation accounts) would vary based on water use and meter size. The median non-residential account would also see an average annual 5% cost increase. No increase in the bimonthly service charge is proposed. A detailed description of the proposed water rate increases is included on page 3.

You can determine the increase in your annual water cost based on your water use over the past year from our website. Insert your NMWD account number and the name on your account into the Rate-Increase Model on NMWD's website at <http://www.nmwd.com/accountbalance.php>.

REASON FOR THE PROPOSED INCREASE

The District's mission is to provide an adequate supply of safe, reliable and high-quality water at reasonable cost consistent with good conservation practices and minimum environmental impact. Maintaining and renovating the infrastructure of the 95-year-old rural West Marin Water System is expensive. Today the system includes 25 miles of pipeline, over 1 million gallons of finished water storage distributed across 13 tanks, 7 pump stations, 168 fire hydrants, a multitude of valves, 3 wells, and a water treatment plant, all designed to serve 778 customers. Sufficient revenue to finance the ongoing system operation and renovation must be generated.

ADDITIONAL INFORMATION

Greater detail of the various rates and customer categories is provided on page 3.

A public hearing before the NMWD Board of Directors to consider the proposed rate increase is scheduled for 7:00 pm, Tuesday, June 28, 2016, at the Dance Palace (503 B Street) in Point Reyes Station.

You are invited to present oral or written testimony on the proposal at the public hearing. You have the right to protest this proposed rate increase. If you do, you must submit your protest in writing, even if you plan to attend the public hearing. If written protests are submitted by a majority of the affected property owners or customers, the proposed increases will not be adopted.

Your written protest must be received prior to the close of the June 28, 2016 public hearing. Written protests must be signed by the property owner or customer of record and must include a description of the parcel (parcel number) or NMWD account number. Send or deliver written protests to:

District Secretary
North Marin Water District
PO Box 146
Novato, CA 94948

For more information about the North Marin Water District, including the history of the West Marin Water System, or to view the most recent Coastal Area Water Cost Comparison or the District's audited financial statement, visit NMWD's website at www.nmwd.com or call the District Secretary at (415) 897-4133.

Sincerely,



Chris DeGabriele
General Manager

West Marin Water Recent Capital Improvement Projects – Status Report		
Project	<u>Expenditures thru 3/31/16</u>	<u>Status</u>
1 Replace PRE Tank #3 - 25,000 gal.....	\$91,759	Complete
2 Install 3 Standby Booster Pumps & Controls @ PRE.....	159,990	Complete
3 Bear Valley Pump Station Upgrade.....	88,132	Complete
4 Replace Pt. Reyes 100,000 gal tank w/180,000 gal.....	399,707	Complete
5 Replace Olema 80,000 gal tank w/150,000 gal.....	561,742	Complete
6 Install Parallel 8" Main on Hwy 1.....	180,000	Complete
7 Upgrade Inverness Park PS w/2 150 gpm pumps.....	157,888	Complete
8 Install Pressure Reducing Valve @ Inverness Park PS.....	13,046	Complete
9 Replace 30,000 gal Inverness Park Bolted Steel Tank.....	164,262	Complete
10 Point Reyes Well Replacement.....	262,968	Complete
11 Olema Pump Station Flood Protection & RTU Upgrade.....	39,262	Complete
12 Gallagher Pipeline & Stream Gauge.....	1,579,583	Complete
13 Upsize Pipeline from Bear Valley Tanks.....	142,972	Complete
14 Replace PRE Tank #4A - 82,000 gallon.....	24,181	In Progress
15 Tank & Pipeline Seismic Upgrades.....	153,881	In Progress
16 Water Treatment Plant Enhancements.....	<u>190,918</u>	In Progress
	<u>\$4,210,291</u>	

PROPOSED			
West Marin Water System Rate Changes			
EFFECTIVE JULY 1, 2016			
BIMONTHLY SERVICE CHARGE	<u>Existing</u>	<u>Proposed</u>	<u>% Increase</u>
For STANDARD 5/8 x 3/4-INCH METER.....	\$30.00	\$30.00	0%
For 1-inch residential meter for fire service.....	\$34.00	\$34.00	0%
For 1-inch meter.....	\$60.00	\$60.00	0%
For all meters in Paradise Ranch Estates.....	\$46.00	\$46.00	0%
QUANTITY CHARGE			
<u>Residential Rate Per Dwelling Unit</u>			
First 400 gallons per day.....	\$7.61	\$8.14	7%
From 401 to 900 gallons per day.....	\$10.54	\$11.28	7%
From 901+ gallons per day.....	\$16.91	\$18.09	7%
<u>Commercial, Institutional & Irrigation Rate</u>			
November 1 through May 31.....	\$7.69	\$8.23	7%
June 1 through October 31.....	\$10.64	\$11.38	7%
PLUS A HYDRAULIC ZONE CHARGE/1,000 GAL			
<u>Zone</u>			
1 Point Reyes Station.....	\$0.00	\$0.00	0%
2 Bear Valley, Silver Hills, Inverness Park & Lower Paradise Ranch Estates (Elevation 0' - 365').....	\$0.20	\$0.21	7%
3 Olema.....	\$0.75	\$0.80	7%
4 Upper Paradise Ranch Estates (Elevation 365'+).....	\$5.08	\$5.44	7%
Additional Commodity Rate for Consumers Outside the Improvement District Boundary.....	\$3.05	\$3.26	7%

2016 COASTAL AREA WATER COST COMPARISON

6/1/2016

Comparison of NMWD's Charges with Other Agencies Based on Rates and Charges in Effect on 6/1/16

"Typical" Single Family Residence (5/8" x 3/4" Meter) Using 55,400 Gallons Annually

Agency	No. of Water Services	Bimonthly Service Charge	Commodity Rate per 1,000 Gallons		Annual Water Cost ¹	Water Bond Tax Rate per \$100/AV	Annual Tax Cost ²	Total Annual Cost
California Water Coast Springs	255	\$157.74	\$30.27		\$2,624 ⁽³⁾	-	-	\$2,627
Bolinas Community PUD	587	\$186.67	\$1.34/\$2.01/\$4.01	⁽⁴⁾	\$1,210	\$0.003	\$452 ⁽⁵⁾	\$1,662
Estero Mutual Water District	141	\$197.90	\$7.86/\$11.56/\$75.76	⁽⁶⁾	\$1,589	-	-	\$1,589
Stinson Beach Co Water	729	\$77.10	\$2.61/\$6.26	⁽⁷⁾	\$636	\$0.004	\$602 ⁽⁸⁾	\$1,238
Bodega Bay PUD	1,054	\$61.82	\$7.73	⁽⁹⁾	\$541	-	\$346 ⁽¹⁰⁾	\$886
Muir Beach Community Services	151	\$49.92	\$9.20	⁽¹¹⁾	\$579 ⁽¹²⁾	-	\$300 ⁽¹³⁾	\$879
Inverness PUD	510	\$100.00	\$3.07/\$4.61	⁽¹⁴⁾	\$783	-	-	\$783
→ NMWD West Marin Service Area	779	\$30.00	\$8.96	⁽¹⁵⁾	\$676	-	\$59 ⁽¹⁶⁾	\$735

Notes:

- (1) Median annual consumption for West Marin Service Area single-family detached home is 55,400 gallons. Use will differ in other areas and microclimates.
- (2) Includes taxes for debt service on outstanding water bonds and loans plus any applicable apportionment of the AB8 1% County levy distributed to compensate for the Prop 13 elimination of the operation and maintenance tax.
- (3) CA Water Coast Springs reports that their average single family residential consumption is 22,440 gallons per year, which would result in a significantly lower total annual water cost than shown here.
- (4) 1st 15 Ccf quarterly @ \$1.00/Ccf, 16 to 21 Ccf @ \$1.50, 22 - 28 @ \$3.00, 29 - 40 @ \$6.00, 41 - 60 @ \$10, 61 - 75 @ \$15 and 76+ Ccf @ \$18/Ccf (billed quarterly).
- (5) Based on home with net AV of \$464,411 (average 2015/16 AV on 545 single family homes in Bolinas) and tax rate of \$0.0026/\$100 AV. 100% of this tax is allocated to water. Also shares in 1% County levy. This "allocation" is projected by the County of Marin at \$258,277 for Bolinas in 2015/16 of which 100% is credited to the water fund amounting to \$440 per service.
- (6) First 25 cubic meters bimonthly @ \$2.075/cm; next 15 cm @ \$3.051/cm. Drought surcharge of \$20.00/cm for use in excess of 40 cm.
- (7) First 6 Ccf monthly @ \$1.95/Ccf; 6 to 10 Ccf @ \$4.68/Ccf; 10 to 16 Ccf @ \$7.88/Ccf; 16 to 20 Ccf @ \$10.80/Ccf; 20 to 30 Ccf @ \$16.97/Ccf; 30 to 40 Ccf @ \$21.20/Ccf; 40 and above Ccf @ \$27.54/Ccf.
- (8) Based on weighted average tax rate of \$0.0038/\$100 AV and home with net AV of \$1,189,172 (average 2015/16 AV on 655 single family homes in Stinson Beach less \$7,000 homeowner exemption). Stinson Beach also shares in 1% County levy. This "allocation" is projected at \$579,485 in 2015/16 of which 70% is credited to the water fund amounting to \$556 per service.
- (9) \$61.82 bi-monthly water svc charge for 0-800 cubic feet, then \$6.51/100 cubic feet for 801-2,500 cubic feet, then \$7.43/100 cubic feet over 2,500 cubic feet.
- (10) Based on share of 1% County levy. This "allocation" by the County of Sonoma was \$364,219 for 14/15, of which 100% was allocated to water amounting to \$346 per service. FY16 allocation is not available until June.
- (11) \$49.92/bimonthly flat rate for first 4,500 gallons, plus \$0.92/100 gallons for 4,500 to 10,000, plus \$1.29/100 gallons for 10,000 to 30,000, plus \$1.62/100 gallons for 30,000+ gallons.
- (12) 25% of revenue is allocated to capital improvements.
- (13) The annual \$300 charge is collected via water billings and is allocated to capital improvements.
- (14) First 12 Ccf bimonthly @ \$2.30/Ccf; 13 to 36 Ccf @ \$3.45/Ccf; 37 to 48 @ \$4.90/Ccf; 49 to 60 @ \$6.75/Ccf, and 61+ @ \$20.15/Ccf.
- (15) Rate shown is weighted average of Point Reyes Station, Olema, Bear Valley/Inverness Park & Paradise Ranch Estates and includes a Proposed 7% commodity rate increase. Tier rate charges do not apply to the typical residential customer as median use does not exceed the 400 gpd tier rate threshold.
- (16) West Marin Service Area receives allocation of the 1% County levy projected at \$46,000 in 2015/16, amounting to \$59 per service.

OCEANA MARIN SEWER
BUDGET SUMMARY
Fiscal Year 2016/17

	Proposed Budget 2016/17	Estimated Actual 2015/16	Adopted Budget 2015/16
OPERATING INCOME			
1 Monthly Sewer Service Charge	\$214,000	\$196,000	\$196,000
2 Misc Service Charges	0	0	0
3 Total Operating Income	\$214,000	\$196,000	\$196,000
OPERATING EXPENDITURES			
4 Sewage Collection	\$50,000	\$58,000	\$49,000
5 Sewage Treatment	58,000	50,000	56,000
6 Sewage Disposal	33,000	33,000	31,000
7 Consumer Accounting	2,000	2,000	2,000
8 General Administration	27,000	23,000	31,000
9 Depreciation Expense	47,000	49,000	52,000
10 Total Operating Expenditures	\$217,000	\$215,000	\$221,000
11 NET OPERATING INCOME (LOSS)	(\$3,000)	(\$19,000)	(\$25,000)
NON-OPERATING REVENUE/(EXPENSE)			
12 OM-1/OM-3 Tax Allocation	\$52,000	\$50,000	\$47,000
13 Interest Revenue	2,000	2,000	2,000
14 Master Plan Update	0	0	(15,000)
15 Total Non-Op Income/(Expense)	\$54,000	\$52,000	\$34,000
NET INCOME/(LOSS)	\$51,000	\$33,000	\$9,000
OTHER SOURCES/(USES) OF FUNDS			
16 Add Depreciation Expense	\$47,000	\$49,000	\$52,000
17 Connection Fees	30,000	24,000	15,000
18 Capital Improvement Projects	(210,000)	(40,000)	(40,000)
19 Total Other Sources/(Uses)	(\$133,000)	\$33,000	\$27,000
20 CASH INCREASE/(DECREASE)	(\$82,000)	\$66,000	\$36,000

OCEANA MARIN SEWER

5-Year Financial Forecast

#		Actual 2013/14	Actual 2014/15	Est Actual 2015/16	Projected 2016/17	Projected 2017/18	Projected 2018/19	Projected 2019/20	Projected 2020/21
1	BASIC DATA								
1	Number of Connections	229	229	230	231	232	233	234	235
2	Monthly Service Charge	\$65.00	\$68.00	\$71.00	\$78.00	\$86.00	\$95.00	\$105.00	\$116.00
3	INCOME								
3	Monthly Service Charge	\$177,970	\$186,864	\$196,000	\$214,000	\$239,000	\$265,000	\$294,000	\$326,000
4	OM-1/OM-3 Tax Allocation	44,887	48,360	50,000	52,000	54,000	56,000	58,000	60,000
5	Connection Fees	30,400	15,200	24,000	30,000	30,000	30,000	30,000	30,000
6	Interest Revenue	1,051	2,323	2,000	2,000	2,000	1,000	1,000	2,000
7	Miscellaneous Revenue/(Expense)	(248)	203	9,000	0	0	0	0	0
8	TOTAL INCOME	\$254,060	\$252,950	\$281,000	\$298,000	\$325,000	\$352,000	\$383,000	\$418,000
9	OPERATING EXPENDITURES	\$138,518	\$132,624	\$166,000	\$170,000	\$175,000	\$180,000	\$185,000	\$191,000
10	OTHER SOURCES (USES)								
10	Capital Improvement Projects/Other	(19,655)	(63,023)	(40,000)	(210,000)	(360,000)	(40,000)	(140,000)	(440,000)
11	Net Change in Working Capital	(5,034)	4,004						
12	INCREASE (DECREASE) IN CASH	\$90,853	\$61,307	\$75,000	(\$82,000)	(\$210,000)	\$132,000	\$58,000	(\$213,000)
13	TOTAL CASH BALANCE	\$282,895	\$344,202	\$419,000	\$337,000	\$127,000	\$259,000	\$317,000	\$104,000
14	Depreciation Expense	\$57,024	\$49,860	\$49,000	\$47,000	\$58,000	\$76,000	\$78,000	\$85,000

61

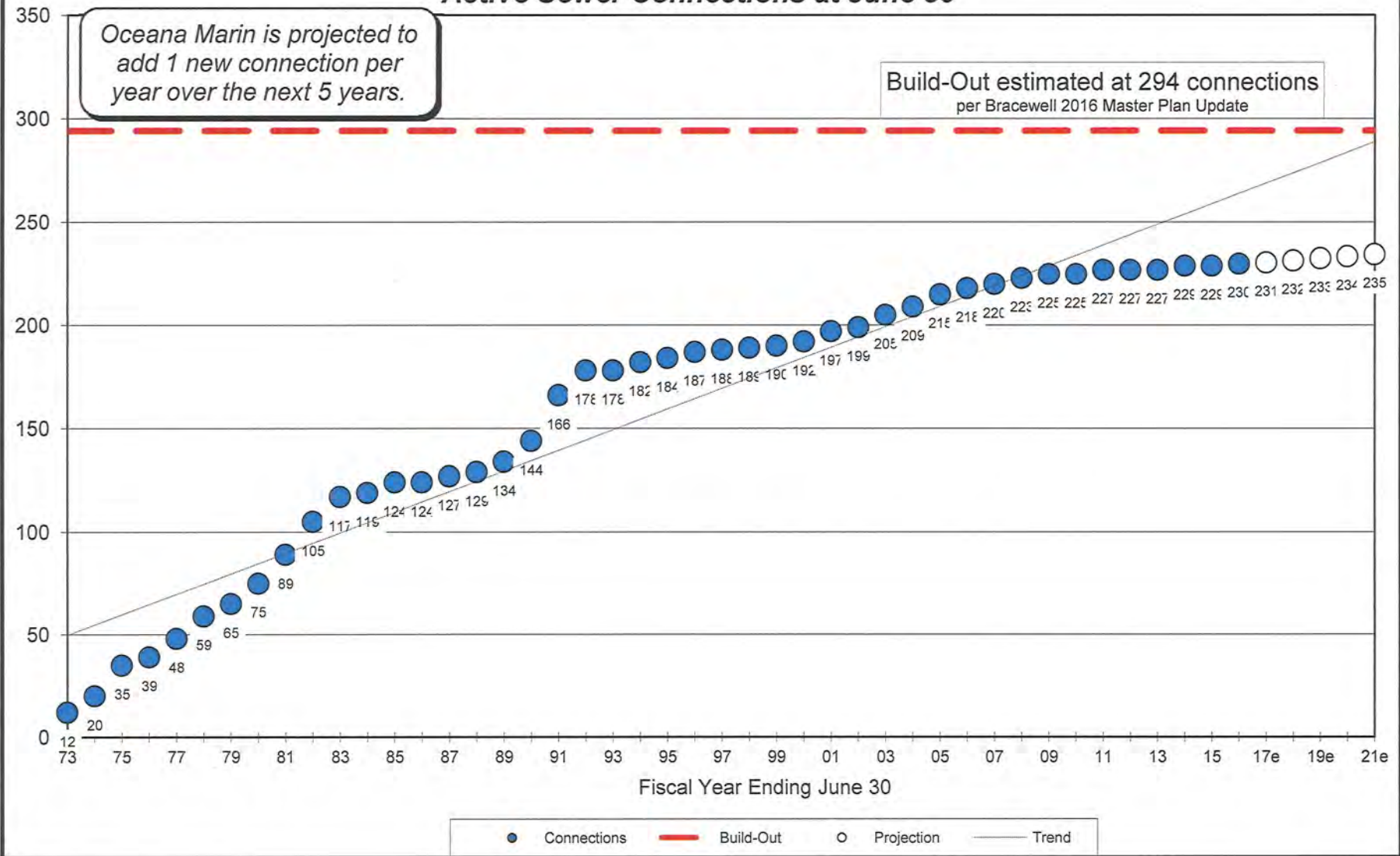
OCEANA MARIN SEWER

NOTES

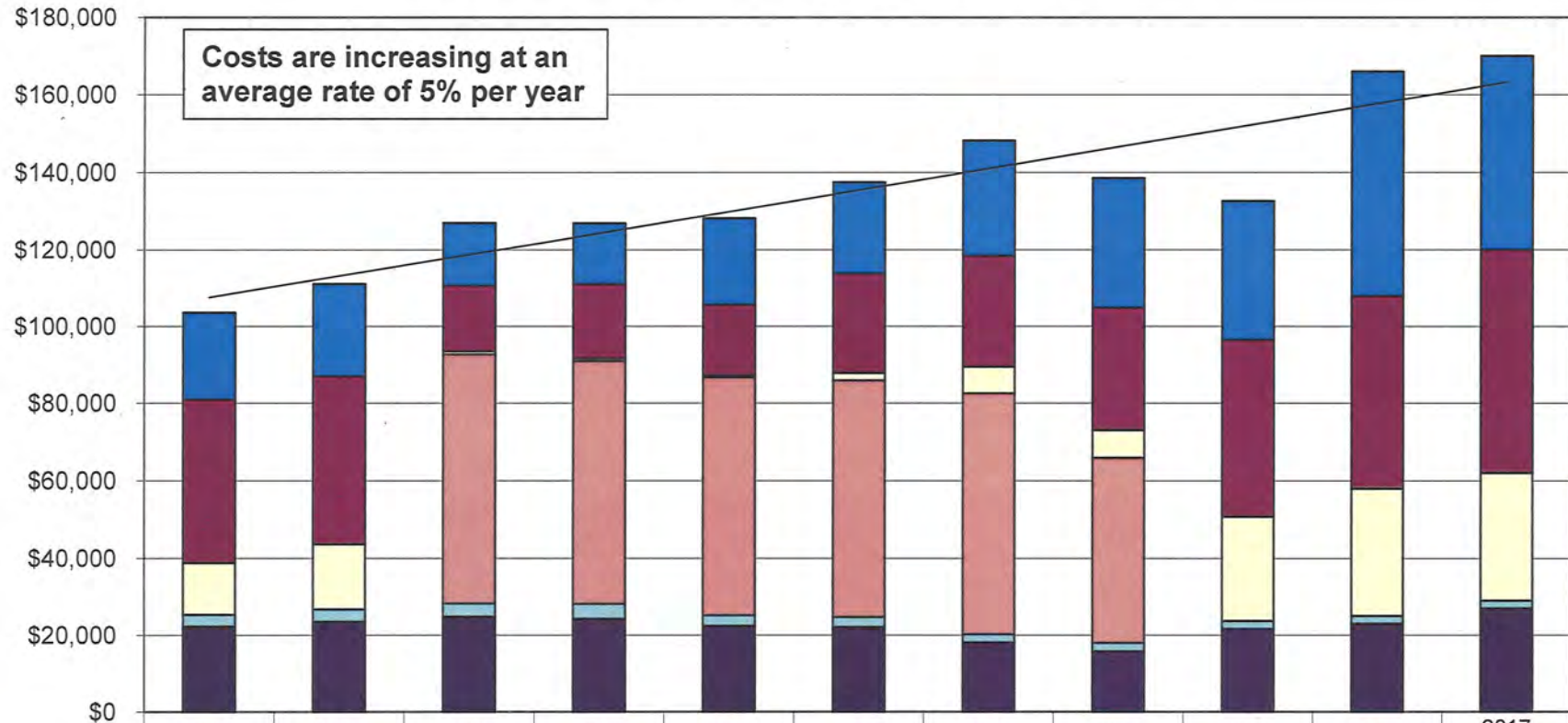
KEY

- 1 Assumes 1 connection per year, which is the average over the last 5 years. Capacity is estimated at 308 dwelling units.
- 2 Proposed 10% annual increases to build cash to fund Phase 1 of the FY20 & FY21 \$500,000 Parallel Force Main project. The \$350,000 Pond Relining Project is outside of the 5-year window.
- 4 County tax allocation enacted subsequent to Prop 13 to compensate for O&M tax revenue previously received. OM-1/IOM-3 County Tax allocation is projected to increase 3% per year.
- 5 Proposed doubling the connection fee to \$30,000. Assumes new connections occur in OM-3 (Units 1 or 5) which are subject to the connection fee.
- 6 Projected available funds invested at 0.50%
- 9 Operating expenditures projected to increase 3% annually. Excludes depreciation expense.
- 10 Capital Improvement Projects. See 5-year Capital Improvement Projects Plan.
- 14 Cash available for operation, maintenance and improvements

Oceana Marin Growth Active Sewer Connections at June 30



Oceana Marin Operating Expenditures





999 Rush Creek Place
P.O. Box 146
Novato, CA 94948

PHONE
415.897.4133

FAX
415.892.8043

EMAIL
info@nmwd.com

WEB
www.nmwd.com

May 31, 2016

RE: Notice of Proposed Oceana Marin Sewer Service Cost Increase

Dear Customer:

This letter is to advise you of a **proposed increase to the Oceana Marin sewer service charge** that would take effect on July 1, 2016. It also provides information about a **Public Hearing scheduled on June 28, 2016**, at which time written and oral comments will be considered and a vote on the increase will be taken by the North Marin Water District Board of Directors.

How much is the proposed rate increase?

Current Oceana Marin sewer service charges are \$71/month (\$852/year). A **10% increase** is proposed equaling \$7/month (\$84/year).

How will the proposed increase affect my sewer bill?

Oceana Marin sewer service charges are collected on the Marin County property tax bill, which is rendered annually for the fiscal year period July 1 through June 30. The proposed sewer service charge increase would add \$7 per month to the cost of sewer service for all customers in Oceana Marin, resulting in a total annual charge for the 2016/17 fiscal year of \$936 (\$78 per month for July 2016 through June 2017).

Why are rates being increased?

In January 2016 the District concluded a Master Plan Update that identified over \$3 million in projects necessary to improve the reliability and redundancy of the Oceana Marin Wastewater System. Constructing these improvements will be financially challenging for the 229 customers of the Oceana Marin utility. Even if the projects are constructed over a 20-year period, the cost would still average \$150,000 annually. The Oceana Marin system held a cash balance of \$389,000 at March 31, 2016. The proposed rate increase, if enacted, would generate \$19,236 of additional revenue annually (\$84/year X 229 customers). As you can likely surmise, additional rate increases will be necessary in future years as the District continues to improve the reliability of the existing facilities and to construct redundant facilities in order to protect against potential system failure and sewage spills. The entire Master Plan Update is available for review at: <http://www.nmwd.com/pdfs/agenda/011916.pdf>.

Public Hearing

A public hearing before the NMWD Board of Directors to consider the proposed sewer service charge increase is scheduled for 7:00 pm, Tuesday, June 28, 2016, at the Dance Palace (503 B Street) in Point Reyes Station.

You are invited to present oral or written testimony on the proposal at the public hearing. You have the right to protest this proposed rate increase. If you do, you must submit your protest in writing, even if you plan to attend the public hearing. If written protests are submitted by a majority of the affected property owners the proposed increase will not be imposed.

Your written protest must be received prior to the close of the June 28, 2016 public hearing. Written protests must be signed by the property owner and must include a description of the parcel (parcel number or service address). Send or deliver written protests to:

District Secretary
North Marin Water District
PO Box 146
Novato, CA 94948

For more information about the North Marin Water District, including a history of the Oceana Marin Sewer System, or to view the most recent Coastal Area Sewer Cost Comparison or the District's audited financial statement, visit NMWD's website at www.nmwd.com or call the District Secretary at (415) 897-4133.

Sincerely,



Chris DeGabriele
General Manager

NORTH MARIN WATER DISTRICT
NOTICE OF PUBLIC HEARING
OCEANA MARIN SEWER SERVICE CHARGES
FISCAL YEAR 2016-2017
AND INTENT TO COLLECT ON TAX ROLL

NOTICE IS HEREBY GIVEN that pursuant to Section 5471 et seq. of the California Health and Safety Code and Section 31101 et seq. of the California Water Code, the Board of Directors of North Marin Water District (NMWD), intends to amend NMWD Regulation 109, Oceana Marin Sewer Service - Rates and Charges, through the adoption of Ordinance No. 34 on June 28, 2016, fixing its charges for sewerage services for the fiscal year 2016-2017 in the amount of \$78 per month (\$936 per year) per parcel (a proposed increase of \$7 per month - \$84 annually), and further intends to elect to collect such charges on the tax roll as it did for fiscal year 2015-2016 in the same manner as general taxes. NMWD has caused to be filed with its Secretary a written report containing a description of each parcel of real property receiving sanitary sewerage service from said District and the anticipated amount of charges on each such parcel.

NOTICE IS HEREBY GIVEN THAT ON Tuesday, June 28, 2016 at 7:00 p.m. at a regular Board Meeting of NMWD held at The Dance Palace, 503 B Street, Point Reyes Station, California, said Board will hear and consider all protests and objections to the proposed increase in charges for sewage services set for in said report.

Dated: May 31, 2016

Publish: June 15 and June 22, 2016 in the Point Reyes Light

2016 COASTAL AREA SEWER COST COMPARISON

6/1/2016

Comparison of NMWD's Charges with Other Agencies based on Charges in effect on 6/1/16

Agency	No. of Sewer Services	Monthly Service Charge	Annual Tax Revenue ⁽¹⁾	Annual Total
Marshall Community Wastewater System	52	\$111.01 ⁽²⁾	\$0	\$1,332
> NMWD Oceana Marin	230	\$78.00 ⁽³⁾	\$211 ⁽⁴⁾	\$1,147 <
Bolinas Community PUD	163	\$89.42	\$0 ⁽⁵⁾	\$1,073
Tomales Village CSD	107	\$63.00	\$68 ⁽⁶⁾	\$824
Stinson Beach Co Water - Inspection Only	703	\$39.65 ⁽⁷⁾	\$247 ⁽⁸⁾	\$723
Bodega Bay PUD	1,010	\$57.82	\$0 ⁽⁹⁾	\$694

Notes:

- (1) Includes taxes for debt service on outstanding sewer bonds and loans plus any applicable allocation of the AB8 1% County levy distributed to compensate for the Prop 13 elimination of the operation and maintenance tax.
- (2) Community wastewater step-system commenced October 2008. Each parcel has own septic tank, pumped to a community collection tank, then pumped into a community leach field. This rate assumes a CPI Increase of 2.4% at April 30, 2016.
- (3) Includes proposed increase of \$7/month.
- (4) Based on share of 1% County levy. This "allocation" is projected by the County of Marin at \$49,000 for 2015/16 which equates to \$211 per service.
- (5) Based on home with net AV of \$464,411 (average 2015/16 AV on 545 single family homes in Bolinas) and tax rate of 0.0026¢/\$100 AV none of which is allocated to Sewer. Also shares in 1% County levy. This "allocation" is projected by the County of Marin at \$258,277 for Bolinas in 2015/16 of which 100% is credited to the water fund.
- (6) Based on home with net AV of \$342,066 (average 2015/16 AV on 107 single family homes in Tomales) and tax rate of 2¢/\$100 AV.
- (7) On-Site Wastewater System - no sewer system. Services provided include septic inspections, ground and surface water monitoring and other inspections required by the State Water Quality Control Board. In addition to the cost paid to Stinson Beach Water Co., each customer must purchase and install their own on-site wastewater system.
- (8) Based on allocation of 1% County levy. This "allocation" was projected by the County of Marin at \$579,485 for 2015/16 of which 30% was allocated to sewer amounting to \$247 per service.
- (9) Based on share of 1% County levy. This "allocation" by the County of Sonoma was \$364,219 for 2014/15 of which 100% was allocated to water (0% to sewer). FY15/16 information is not available until June.

13

MEMORANDUM

To: Board of Directors
From: David L. Bentley, Auditor-Controller
Subj: AMI Project Status Update
t:\aclword\ami\ami status rpt 060315.docx

June 3, 2016

RECOMMENDED ACTION: Information Only**FINANCIAL IMPACT: None at this Time**

At the February 26, 2016 meeting the Board authorized the District to conduct an AMI Pilot Project using the consultant Utiliworks for a not-to-exceed fee of \$218,700. One of the first accomplishments was to "brand" the project for public perception, since it will potentially impact every District water customer. We gathered names from other agencies and the General Manager interviewed the Consumer Services Staff. We concluded that the best name for NMWD's project is "Advanced Meter Information", a slight derivation from the industry standard label "Advanced Metering Infrastructure" while maintaining the prevalent AMI acronym. We will use this going forward with our customer communications.

The pilot project is divided into five phases, with an aggressive schedule: 1) Assessment; 2) Roadmap; 3) Pilot Project Planning; 4) Pilot Project Implementation; & 5) Pilot Project Assessment (scheduled for completion by January 31, 2017).

The Assessment is complete and the roadmap is underway. Staff estimated \$5 million for the project. Utiliworks found Staff's estimate reasonable, but added a 5% contingency, bringing the total to \$5.25 million. At \$5.25 million the project will financially pay for itself over twenty years, but just barely. To confirm the cost estimate bid proposals are being solicited and are due July 8. A low-interest rate State Revolving Fund loan application has been started.

What is not captured in the financial analysis is the increase in customer service that AMI will provide, including reduced customer water loss, customer real-time engagement in water use, the opportunity to move to monthly billing, redirection of meter reading labor to customer service, and hourly consumption data leading to increased customer confidence in billed water volumes.

Once bids are received in July we will have a firm picture of the project cost. Staff will select a vendor, or more likely a group of vendors, to move forward with the pilot project. The pilot project will involve retrofitting about 200 meters in various locations throughout Novato to confirm that AMI will work within Novato's rolling topography. Staff plans to return to the Board at its August 16 meeting with a recommendation on AMI vendors to use in conducting the pilot project.

14

**NOTICE OF MEETING OF
NORTH BAY WATERSHED ASSOCIATION**

Notice is hereby given that a meeting of the North Bay Watershed Association will be held
as follows:

Date: Friday, June 3, 2016, Time: 9:30 a.m. – 11:30 a.m.

Location: Novato Sanitary District 500 Davidson Street, Novato Ca. 94945

AGENDA Item and Recommendation

- | | |
|---|-----------|
| 1. Call to Order (Jack Gibson, Chair) | 9:30 |
| 2. Public Comment | |
| 3. Approval of the Agenda (1 min.) <i>Approve</i> | |
| 4. Approval of Minutes (5 min) <i>Approve</i> | |
| 5. Treasurer's Report <i>handout</i> (1 min.) <i>Accept</i> | |
|
6. Climate Project Update [Funded NBWA 2012] <i>Information</i> |
9:40 |
| Caitlin Corwall, Sonoma Ecology Center | |
|
7. Proposed Rural Road Project. <i>Approve</i> |
10:10 |
| Judy Kelly, NBWA Executive Director | |
| Jeff Sharp, Napa Co. Public Works | |
|
8. Proposed NBWA 2016-17 Budget. <i>Approve</i> |
10:30 |
| Judy Kelly, NBWA Executive Director | |
|
9. The Case for the Bay -The Bay Institute looks at
the critical need for freshwater inflow into SF Bay. <i>Information</i> |
10:45 |
| Gary Bobker, Director, Rivers and Bay Program, TBI | |
|
10. Items of Interest |
11:20 |
|
11. Items for next agenda |
11:25 |
| * Bay Area Regional Reliability assessment (BARR)
http://www.bayareareliability.com | |
| * Planning for NBWA; results of Member Surveys and where to go from here | |

Next Meeting Information:

July 8, 2016, Marin Community Foundation
5 Hamilton Landing, Novato CA 94949

NORTH BAY WATERSHED ASSOCIATION

Minutes for the meeting of the North Bay Watershed Association (NBWA) Board of Directors.

Date: May 6, 2016
Time: 9:30 a.m.
Location: Marin Community Foundation
5 Hamilton Landing, Suite 200
Novato, CA 94949

Directors Present: Directors present included:

<u>Board Member</u>	<u>Agency/Organization</u>	<u>Board Member</u>	<u>Agency/Organization</u>
Jack Baker	North Marin Water District	Damon Connolly	County of Marin
Keith Caldwell	Napa Sanitation District	Chris Pegg	City of Sonoma
Judy Schriebman	Las Gallinas Valley Sanitary District	Paul Jensen	City of San Rafael
Mike Healy	City of Petaluma	Madolyn Agrimonti	City of Sonoma/Sonoma Co. Valley Sanitation District
Jack Gibson	Marin Municipal Water District	Pam Meigs	Ross Valley Sanitary District
Kathy Hartzell	Central Marin Sanitation Agency	Brant Miller	Novato Sanitary District
		Juliana Inman	Napa County FC&WCD

Directors present represented 14 out of the 18 agencies signatory to the Association MOU.

Board Actions:

1. **Call to Order.** Jack Gibson, Chair, called the meeting to order at 9:35 a.m.
2. **Public Comment.** None.
3. **Approval of the Agenda.** (See Handout) The Board unanimously approved the agenda.
4. **Approval of the Minutes of the Board Meeting held January 16, 2016.** (See Handout) The Minutes of the Board Meeting held on January 16, 2016 were unanimously approved.
5. **Treasurer's Report.** (See Handout) The Treasurer's Report was accepted as presented by Judy Kelly.
6. **Living Shoreline.** Marilyn Latta, California Coastal Conservancy presented information about the Living Shoreline project that seeks to implement creative multi-benefit solutions to shoreline restoration. Experts agree that policies need to change to allow for the beneficial reuse of fill substances – oyster shells, as an example. A good example of this thinking is shown in the Maryland Living Shorelines Protection Act under which you need to prove a living shoreline wouldn't work, before you're allowed to build a seawall. A large regional effort was just completed in the Bay Area to consider how best to restore estuary-watershed connections and multi-habitat efforts. Coastal planners are excited about the new

focus on transition zones on both edges of the bay interface areas. Examples of bayside restoration projects include creation of new eelgrass, shellfish beds, rock habitats, and artificial structures. This project is considered a pilot, with a one-acre approach, to test methods and assumptions. This is key because projects of this sort have not previously been done in the SF Bay. The project is unusual as it has budgeted \$1.3 million on monitoring because there are so many data gaps. The monitoring is looking at fish, bird, and invertebrate use with frequent quarterly monitoring. Native Olympia oysters and eelgrass are part of the effort with the goal of trying to design projects to achieve various ecosystems and functions. Site locations include: San Rafael on land owned by TNC and in Hayward which is a smaller site. Materials used include series of shell bag mounds, reef balls, reef ball stacks, "layer cake"-design hard scape device, and oyster blocks. On the larger test site, six semi trucks of shells were used. Preliminary results look very promising: 750k oysters survived, shell bags performed the best, layer cake the worst. Oysters do better at lower tidal areas. Eel grass results: excellent despite some natural ups and downs, continuing to monitor. Marilyn reports that they have also seen an increase in varied wildlife at the study sites and along with habitat benefits, the treatments reduce wave activity 30-50%. They are currently assessing seven sites bay-wide for another round. Members had the following questions for Marilyn: Q: can you eat the oysters? (No, not safe enough). Q: Given the need to restore and protect shorelines, have you looked at other materials? Do you have a plan to add more material as the protected area settles? (Yes, we have a 5-year monitoring plan. Will continue to assess the need for maintenance. Ideally, they will utilize natural materials. Informational signs are included near the project, and City of San Rafael has been very supportive with the permitting process. Pilot projects will continue through 2030 to determine best course of action). Q: What kind of public support are you getting? (Support is good, but project is only visible at low tides. Signage will be up soon. Funding is not easy, but there are new funding sources becoming available) Q: How will this project scale? (Hope it can easily scale up and down depending on funding) Details can be found at Sfbaylivingshorelines.org

7. Resilient Landscape Vision- Project for Lower Novato Creek: Scott Dusterhoff, SFEI, presented information about the Vision Project. This project focuses on attaining better flood protection while enhancing ecosystem services. The work is being lead by the San Francisco Estuary Institute with the overall goal of helping the Bay Area community achieve better ecosystem health. Scott provided some background on current and recent North Bay projects undertaken by SFEI, including the Napa Valley Historical Ecology Study, the San Pablo Bay Shoreline Change Study, the Petaluma Watershed Historical Hydrology Study, and today's topic --the Lower Novato Creek Landscape Vision. SFEI is using a "resilient landscapes" approach and format for the project. This is a multi-step process: 1. Understand how things worked (by performing a historical ecology evaluation) 2. Identify landscape change 3. Create resilient landscape visions with partners → Craft policy and project guidance → define implementation projects → monitor and feedback into "how things work now." In this case, they are looking at flood control channels at the Bay interface. Challenges include: aging infrastructure, complex landscape setting, dredging impacts to habitat; changing climate, outdated channel designs, and the increasing value of dredged sediment for bayland restoration. The project asks: How can we meet future flood control needs AND improve ecosystem functioning at the Bay interface? The answer is the Flood Control 2.0 project (*note: Flood 2.0 was presented to the NBWA Board on 6 November 2015*) created to address this question. One of the Flood 2.0 projects, Lower Novato Creek, has constrained flood flows, high fine sediment supply, constrained tidal flows; in-filled tidal channel network; low tidal prism and aggrading mainstream channel, and subsiding reclaimed marsh area. Habitat features have greatly changed over time. This project calls for levee removal and re-established tidal marsh, converting Highway 37 and the railroad into an elevated causeway, re-establishing upland transition zones, creating a horizontal seepage levee and a depositional marsh plain. The levee would be built to protect Bel Marin Keyes community. Board members asked the following questions: Q: How do you project 5, 10, 20 years out if the levee will be effective? (With projections for sea level rise all over the place, we would build the levees high enough so that they will protect against flooding for the foreseeable future). Q: Elevating Highway 37? (We want

to elevate the whole highway, not only sections and now even Caltrans is talking about that option). Q: Isn't Bel Marin Keyes service district concerned about the coming changes included with this project. (We have meet with BMKSD and are in close coordination with them on this project). See more information about the project at <http://www.sfei.org>

8. **NBWA Conference Summary.** Judy Kelly, NBWA Executive Director, presented a power point that summarized the 2016 NBWA Conference on April 22nd in Napa. She reviewed the numbers of attendees (approximately 175/180), net return to NBWA (\$12,000), and the overall positive feedback received on the conference. As would be expected, speaker evaluations were varied with the majority either very highly/highly rated, or rated good. Three speakers were rated good/fair. There were a few specific comments about the talks that will be passed along to the speakers if they wish to receive them. The conference planning committee will meet again later in May to go over the details and look closely at the ranking of the speakers. There was a round of congratulations to all involved in making the conference a success.

9. **Items of Interest.** There were no items of interest discussed.

10. **Items for Next Agenda.**

*Caitlin Cornwall, Sonoma Ecology Center, *North Bay Climate Adaptation Initiative* project update

*Gary Bobker, The Bay Institute – freshwater needs of the lower estuary

Jack Gibson, Chair, adjourned the meeting at 11:25 a.m.

SUBJECT TO BOARD APPROVAL

Submitted By: Judy Kelly,
Executive Director

NEXT MEETING INFORMATION

June 3 – Novato Sanitary District 500 Davidson Street, Novato, CA 94945



June 2016 - Director's Report

NBWA Business

- Agreements underway for NBWA website revision – more mobile friendly, easier to access and use. Anticipate new site ready in July.
- Funding agreement with Sonoma Ecology Center being extended six months [December 31, 2016] to allow for completion. Board Briefing in June on this project.
- Work underway to hire Administrative support for NBWA through Sonoma County Water Agency. I will be part of interviews.
- Board member surveys are coming in [thank you] to be summarized and discussed at the July NBWA Board meeting.
- Agreements being developed for already-approved NBWA projects: supporting BASMAA stormwater work and education work support for Friends of Petaluma River.
- Advance planning: in July the Board will hear about an major effort about regional water reliability and will discuss the results of the member survey and what direction[s] the Board wishes to take for the next few years. No meeting in August and when we return in September we will have two excellent speakers talk about the Big Picture of estuary health and what priority actions should be taken to improve the health of the estuary.

Funding News

- Integrated Regional Water Management Plan [IRWMP} Committees are hard at work in efforts to help DWR define what the Disadvantaged Community {DAC} funding round will mean for the region and the North Bay, and be prepared to submit proposal when the final Guidance is released. Chris Choo, Brad Sherwood, Carl Morrison and I, among others, are representing North Bay interests in these discussions. Current efforts are focused on finding partners and defining appropriate processes. This work is for an initial regional amount of \$6.5 million [no match requirement] for outreach and project development in DACs. FYI-This funding source is a point of discussion at almost every NBWA Joint Technical Committee meeting; See <http://www.bairwmp.org> for news and update on this funding.
- US EPA Bay Improvement Fund. The deadline for this round of EPA funding [50% match requirement] is May 27th. Information on this fund source can be found at <https://www.epa.gov/sfbay-delta/sf-bay-water-quality-improvement-fund-2016-request-proposals>. NBWA just completed the management of earlier project funding for the region from this source. The JTC has been tracking and discussing this funding source for several years and individual JTC members are considering applying for 2016 grants. I anticipate a yearly round of this funding and will provide earlier Board notice in 2017.

News and Notes

- The Biennial Bay-Delta Science Conference [Sacramento Nov. 15-17 2016] is a forum for presenting technical analyses and results relevant to Delta Science --the goal of the conference is to provide new information and syntheses to the broad community of scientists, engineers, resource managers, and stakeholders working on Bay-Delta issues. The organizers of this 9th Science Conference are seeking presentations that support this goal. The deadline for abstracts is June 3, 2016.
- An important new report is out on the challenges facing the Bay Delta. Written for a non-science audience the report <http://resources.ca.gov/docs/DeltaChallenges-v13.pdf> highlights and updates the current critical situation in the Bay Delta concluding "...that the challenges are so complex as to meet the definition of a "wicked" problem. Such problems can't be ignored, defy straight-forward characterization, and have no simple solutions. Yet they must be actively managed... Excellent reading.
- Website of the month. If you have not found the Maven's Notebook website I highly recommend it as an unbiased source of news about a wide array of California water issues <https://mavensnotebook.com>

SCOPE OF WORK

Training & Support Services to Facilitate Rural Road RAM Implementation in Marin, Sonoma and Napa Counties

The below scope of work includes training, onboarding and use of Rural Road RAM by up to 14 total selected users in Marin, Sonoma and Napa Counties with funding provided by the North Bay Watershed Association (NBWA). In addition, at our own expense, 2NDNATURE(2N) will develop and integrate a 'managers module' in Rural Road RAM to allow simple site and road network cost estimates for road improvements by road managers. This improvement will be available to all regional Rural Road RAM users within 6 months of contract execution with NBWA.

Rural Road RAM (www.ruralroadram.com) is a complete assessment and data management system to track and communicate the effectiveness of road improvement efforts. The online tool provides a complete process to inventory, assess, evaluate and report the relative sediment generation threat of a road to a local stream. The approach technically aligns with experts' determinations of relative treatment priorities and align with CA DFW upslope erosion inventory and sediment control guidance. However, the field assessment protocols are designed to be completed by anyone with a day of training. Rural Road RAM is currently being employed in Santa Cruz and Napa Counties by a number of agencies (Resource Conservation Districts, State Parks, County Roads Department, etc.) to complete and manage road data, prioritize sites for projects, and communicate the effectiveness of those improvements. Sonoma Ecology Center has recently adopted Rural Road RAM to prioritize and track road improvement efforts to be completed in the Sonoma Creek Watershed. The EPA, RWQCB and DWR continue to support use and adoption of Rural Road RAM by land managers to improve their ability to communicate the environmental benefits of road improvement programs to a wide array of audiences. By using a common RAM unit of measure (continuous 0-5 score) per length of roadway assessed, Road RAM results can be used to both prioritize where current improvements are most needed, as well track the progress of past improvements. Mapped summaries of road sites with scores of 2 or below easily communicate treatment needs. The changes in road conditions over time as a result of road treatments can be easily aggregated across sites to simply graph the increase in miles of road in good condition (> 3.5 score) to report progress. There is a great regional advantage for Marin, Sonoma and Napa Counties using a single, standardized data management system that can generate project performance metrics, report progress towards Sediment TMDL objectives, inform a regional prioritization process, and improve communications with the public, funders, and key stakeholders.

This NBWA funding will be used to train, onboard and support targeted Rural Road RAM users in Marin, Sonoma and Napa Counties and includes the following tasks.

TASK 1. RURAL ROAD RAM TRAINING

A one-day training workshop will be provided for up to 14 field personnel to become proficient with all aspects of Rural Road RAM. The training includes review of technical foundation, interactions with the online data management system and detailed field-training to complete field measurement protocols using the Rural Road RAM mobile application. Up to 14 attendees can be identified and may include but not limited to County or City staff, RCD staff, water district staff, land trust staff, parks staff or other target land managers, public agencies or NGO monitoring groups that are or may assess or

manage roads within Sonoma, Marin or Napa Counties. A pre-training managers meeting will be held between 2N and NBWA Joint Technical Committee representatives to select the agencies and associated representatives to administer system accounts and attend the RAM training session. All selected agencies that chose to attend RAM training must have a fully executed Software as a Service (SaaS) user agreement with 2N priority to attending training. There is no additional charge to enter into the SaaS with 2N (see Fees and Schedule below).

TASK 2. PAST ASSESSMENT DATA TRANSLATION SUPPORT

For each county a representative coordinator will be required and selected in consultation with 2N and NBWA Joint Technical Committee representatives. 2N will provide each County technical support via the selected coordinators. 2N will guide and support each county coordinator to compile, aggregate and manage any existing and relevant road assessments into a data format that can be directly uploaded to Rural Road RAM. Once each coordinator has compiled their road data, 2N will upload the data into the Rural Road RAM tool, making these sites immediately accessible for field assessments and tracking conditions into the future. Each county coordinator will work alongside 2N to QA/QC the uploaded data.

TASK 3. USER SUPPORT AND MAINTENANCE

Provide ongoing Rural Road RAM user support and maintenance for 12 months to Sonoma, Napa and Marin County trained users that may include assistance with website functionality, inventory tasks, field protocol guidance, etc. 2N will also provide all data management, data backups, website maintenance and other software support tasks. User feedback will be encouraged and any requested functional upgrades to improve the application will be cataloged for consideration for future implementation.

FEES AND SCHEDULE

2N will provide these services for Marin, Napa and Sonoma Counties for \$25,000, made payable as two flat fee payments for services listed above. An initial payment of \$20,000 will be due within 30 days of contract execution with NBWA and the final \$5,000 will due at the onset of the final month of the contract term. 2N will require the execution of separate Software as a Service (SaaS) agreements with all agencies that have separate administrators in Rural Road RAM. The services provided to each agency are noted above and there will be no fee to the selected agencies for the duration of the term funded by NBWA.

Task and Deliverable	Completion post NBWA contract execution
1 Rural Road RAM training	Within 2 months
2 Existing data translation and tool population	Within 4 months
3 User support and tool maintenance	12 month term

MANAGERS MODULE DEVELOPMENT

Discussions with NBWA representatives and road managers in the region has indicated a strong desire for the addition of a “manager’s module” in Rural Road RAM tool to facilitate the generation of reasonable site and road network cost estimates for erosion and sediment control improvements/repairs. 2N will complete and make these improvements available to all Rural Road RAM users within 6 months of contract execution with NBWA. The costs for the added functionality will be incurred by 2N and not funded by this contract. In collaboration with expert road managers, a reasonable computational approach will be integrated into Rural Road RAM to estimate road site and road network improvement costs that can be used by people that are non-road management experts with a basic understandings of road improvement costs. The cost computations will utilize existing site specific data currently obtained by Rural Road RAM assessments and data integration approaches within a defined road network to produce reasonable estimates for road repairs. We expect the initial cost approach will provide recommended default cost metrics of volume of material moved per day and associated daily crew costs that can be changed by the user to allow flexibility based on materials, size of crew, timing of improvements and other factors that will greatly influence costs. Results will be integrated into a simple automated summary within the tool, as well as expanded export data capabilities in useable formats to allow additional detailed cost analytics outside of Rural Road RAM. This has been an identified high priority improvement to Rural Road RAM since inception.

We look forward to collaborating with NBWA and the natural resource agencies that they support.

NBWA FY 2016-2017 Final Budget

Overhead and General Benefit Projects		NBWA Cash Requirement					CASH ALLOCATION																			
	In-Kind Services	NBWA staff	Other consultants	COCs	Assumed grant contribution	2016 - 2017 Total Cash Budget	CMSA	Marin Co	LOVSD	Bel Marin Keys, S&SM, City of Mill Valley	McSTPP	RVSD	MMWD	NMWD	NapaSan	NapaFlood	NovatoSan	City of Novato	Petaluma	San Rafael	City Sonoma	Sonoma Co.	SCWA	SVCSD	NBWA TOTAL	
A- Overhead																										
1	Board Meetings/Workshops	-	39,300	-	-	-	1,308	9,989	1,237	1,197	1,165	1,379	2,010	1,370	1,361	1,426	1,287	1,540	2,075	2,006	1,394	7,439	4,215	1,451	40,840	
2	Board Meeting Minutes	-	4,560	-	-	-	152	809	144	139	135	160	233	159	158	165	150	179	241	233	162	863	489	168	4,739	
3	Agency Coordination	-	13,680	-	-	-	455	2,426	431	417	405	480	700	477	474	496	451	536	722	698	485	2,590	1,467	505	14,216	
4	Administrative Steering Comm.	-	4,460	-	-	-	148	791	140	136	132	157	228	155	154	162	147	175	236	228	158	844	478	165	4,635	
5	Finance/Accounting Support	30,000	-	-	-	-	-	-	-	-	-	-	-	-	-	-	-	-	-	-	-	-	-	-	-	
6	Administrative Support	-	-	6,000	986	-	-	-	-	-	-	-	-	-	-	-	-	-	-	-	-	-	-	-	-	
Overhead Subtotals		30,000	62,000	6,000	986	-	2,064	10,994	1,951	1,889	1,838	2,176	3,172	2,161	2,148	2,250	2,045	2,429	3,274	3,165	2,200	11,737	6,650	2,288	64,429	
Overhead Totals							2,064	10,994	1,951	1,889	1,838	2,176	3,172	2,161	2,148	2,250	2,045	2,429	3,274	3,165	2,200	11,737	6,650	2,288	64,429	
B- General Benefit Projects																										
7	Public Outreach Materials	-	5,000	-	-	-	166	887	157	152	148	175	256	174	173	181	165	294	264	255	177	946	536	185	5,294	
8	Committee Activities	-	27,360	-	-	-	911	4,852	861	834	811	960	1,400	954	948	993	903	1,072	1,445	1,386	971	5,179	2,934	1,010	28,432	
9	Website	-	3,644	-	-	-	121	646	115	111	108	128	186	127	126	132	120	143	192	186	129	690	391	134	3,787	
10	Data Management	-	10,000	-	-	-	333	1,773	315	305	296	351	512	348	346	363	330	392	528	510	355	1,893	1,073	369	10,392	
11	Legislative Action*	-	-	-	-	-	-	-	-	-	-	-	-	-	-	-	-	-	-	-	-	-	-	-	-	
12	Watershed Council	-	22,800	-	-	-	759	4,043	718	695	676	800	1,166	795	790	827	752	893	1,204	1,164	809	4,316	2,445	842	23,693	
13	NBWA Conference Support	-	12,500	-	-	-	416	2,217	393	381	371	439	639	436	433	454	412	196	660	638	444	2,366	1,341	461	12,695	
14	Update of IRWMP	-	15,000	-	-	-	499	2,660	472	457	445	526	767	523	520	544	495	784	792	766	532	2,839	1,609	554	15,784	
15	Contingency Reserve	-	20,000	-	-	-	666	3,546	629	608	593	702	1,023	697	693	726	660	784	1,056	1,021	710	3,786	2,145	738	20,784	
General Benefit Subtotals		-	116,304	-	-	-	3,872	20,623	3,660	3,543	3,447	4,081	5,949	4,054	4,028	4,220	3,837	4,557	6,142	5,936	4,127	22,016	12,474	4,293	120,861	
General Benefit Totals							3,872	20,623	3,660	3,543	3,447	4,081	5,949	4,054	4,028	4,220	3,837	4,557	6,142	5,936	4,127	22,016	12,474	4,293	120,861	
FY 2016 - 17 TOTAL A + B		30,000	178,304	6,000	986	-	5,936	31,617	5,611	5,432	5,285	6,257	9,121	6,216	6,176	6,470	5,883	6,986	9,415	9,101	6,326	33,753	19,124	6,581	185,290	
FY 2016 - 17 TOTAL A + B							185,290	5,936	31,617	5,611	5,432	5,285	6,257	9,121	6,216	6,176	6,470	5,883	6,986	9,415	9,101	6,326	33,753	19,124	6,581	185,290

		NBWA Cash Requirement					CASH ALLOCATION																			
Specific Benefit Projects		In-Kind Services	NBWA staff	Other consultants	COCs	Assumed grant contribution	2016 - 2017 Total Cash Budget	CMSA	Marin Co	LOVSD	MCSD #5 (See Note 1)	McSTPP	RVSD	MMWD	NMWD	Napa San	NapaFlood	NovatoSan	City of Novato	Petaluma	San Rafael	City Sonoma	Sonoma Co.	SCIWA	SVCSD	NBWA TOTAL
Project #																										
	C-Specific Benefit Projects																									
1	Project "A"	-	-	-	-	NA	22,000																			
2	Project "B"	-	-	-	-	NA	20,000																			
3	Project "C"	-	-	-	-	NA	20,000																			
FY 2016-17 Specific Benefit Project Total		-	-	-	-	-	62,000																			
NBWA Total for FY 2016-17		30,000	178,304	6,000	986	-	247,290	5,936	31,617	5,611	5,432	5,285	6,257	9,121	6,216	6,176	6,470	5,883	6,986	9,415	9,101	6,326	33,753	19,124	6,581	185,290

Note 1	
Note 2	

15

FOR ACCESSIBLE
MEETING INFORMATION
CALL: (707) 543-3350
ADD: (707) 543-3031



**TECHNICAL ADVISORY COMMITTEE
MONDAY: JUNE 6, 2016**

Utilities Field Operations Training Center
35 Stony Point Road, Santa Rosa, CA

9:00 a.m. (Note Location)

1. Check In
2. Public Comment
3. Water Supply Conditions and Temporary Urgency Change Order
4. Sonoma Marin Saving Water Partnership
 - a. Water Production Relative to 2013 Benchmark
 - b. SWRCB Emergency Urban Water Conservation Regulations
5. Biological Opinion Status Update
6. Items for next agenda
7. Check Out

State Water Resources Control Board Conservation Standard Tracking for the Sonoma-Marín Saving Water Partnership

Table 1: Monthly Water Use Relative to 2013 Benchmark

Water Retailer	April 2016 (Gallons)	2013 Benchmark (Gallons)	Relative to 2013 Benchmark	Conservation Standard	April 2016 GPCD*
Cal Am	5,995,658	23,030,000	74%	25%	22
Cotati	16,776,928	26,328,761	36%	20%	77
Marin Municipal	542,489,779	693,942,974	22%	20%	95
North Marin	182,104,210	240,000,000	24%	24%	99
Petaluma	174,981,987	249,139,449	30%	16%	94
Rohnert Park	106,194,841	143,000,000	26%	16%	82
Santa Rosa	357,148,546	575,718,337	38%	16%	69
Sonoma	36,560,482	64,388,242	43%	28%	105
Valley of the Moon	52,569,542	85,656,565	39%	20%	74
Windsor	68,691,998	96,513,934	29%	16%	83
SMSWP Total	1,543,513,970	2,197,718,262	30%	19%	85

* GPCD is provided as information only

Table 2: Aggregate June 2015 to Current Month Relative to 2013 Benchmark

Water Retailer	Aggregate June 2015 to Date (Gallons)	2013 Benchmark (Gallons)	Relative to 2013 Benchmark	Conservation Standard
Cal Am	199,485,923	276,079,000	28%	25%
Cotati	224,348,765	295,514,272	24%	20%
Marin Municipal	6,505,269,813	8,213,153,646	21%	20%
North Marin	1,994,714,395	2,908,000,000	31%	24%
Petaluma	2,179,601,046	2,844,748,052	23%	16%
Rohnert Park	1,246,751,545	1,513,000,000	18%	16%
Santa Rosa	4,796,778,068	6,442,908,511	26%	16%
Sonoma	482,908,412	673,069,910	28%	28%
Valley of the Moon	670,039,095	947,227,289	29%	20%
Windsor	870,460,765	1,135,404,207	23%	16%
SMSWP Total	16,221,145,453	21,300,248,788	24%	19%

16

DISBURSEMENTS - DATED JUNE 2, 2016

Date Prepared 5/31/16

The following demands made against the District are listed for approval and authorization for payment in accordance with Section 31302 of the California Water Code, being a part of the California Water District Law:

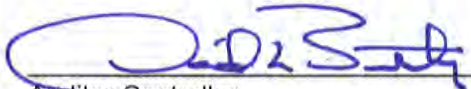
Seq	Payable To	For	Amount
*	US Bank	April Bank Analysis Charge (Lockbox \$912, Credit Card Processing \$693.90, & Other \$529.80) (Less Interest of \$105.63)	\$2,030.07
1	All Star Rents	Air Compressor Rental (1 Day) (\$137) & Propane (16 gal)	190.93
2	American Family Life Ins	May Employee Contribution for Accident, Disability & Cancer Insurance	3,702.03
3	Athens Administrators	June Workers' Comp Admin Fee	1,000.00
4	Automation Direct	PLC Power Supplies (2)	170.00
5	Backflow Distributors	Calibrate Backflow Testers w/ Repair Parts	189.19
6	Baker, Jack	May Director's Fee (\$424) & North Bay Watershed Association Meeting on 5/6/16 (\$212)	636.00
7	Bruinsma, Theo	Refund Overpayment on Closed Account	88.13
8	Calif Contractors Supplies	High Viscosity Gloves (24) (Maint & Const)	102.29
9	California Water Service	April- June 2016 Water Service (O.M.) (0 CCF)	144.82
10	California State Disbursement	Wage Assignment Order	1,015.25
11	CalPERS	Health Insurance Premium (Employees \$50,186, Retirees \$8,907 & Employee Contribution \$13,255)	73,953.61
12	Chandrasekera, Carmela	Exp Reimb: BAWWA Dinner (\$45) & Membership (1/16-12/16) (\$20)	65.00
13	Clean Waste	Brief Relief Urine Bags (300)	306.00

Seq	Payable To	For	Amount
14	Core Utilities	Consulting Services: April IT Support (\$5,000), Move CORE Billing to Virtual Server (\$900), Troubleshooting & Installation of Allen Bradley Panelview Software (\$350) & Nunes & Buck Hatch Overflow Alarms (\$125), Wonderware Meeting (\$150), Intrusion Alarm Addition @ Point Reyes (\$75), PR Tank Input Problem (\$25), Program 2 Radios & Firewall and Set up SCADA for Thorsen Ct to STP (\$1,600), & On-Line Calculator Adjustment (\$25)	9,575.00
15	Cummings Trucking	Rock (66 yds) (\$2,374) & Sand (15 yds) (\$804)	3,177.61
16	F.N. Cuthbert	Tube Pressure Gauges (10)	166.00
17	Evoqua Water Technologies	Service on Deionization System	222.50
18	Fisher Scientific	Chlorine Test Kit (\$58) & Pipet Tips (1,000) (Lab)	93.85
19	Fraites, Rick	May Director's Fee (\$424), SCWA Water Advisory Committee Meeting on 5/2/16 (\$212) & North Bay Watershed Assoc Conference Meeting on 4/22/16 (\$212)	848.00
20	Frontier Communications	Leased Lines	1,534.73
21	Garrett, Daniel	Exp Reimb: Safety Boots	200.00
22	Golden Gate Petroleum	Gasoline (\$2.37/ gal) & Diesel (\$2.09/ gal)	1,271.56
23	Grainger	Fluorescent Lights (36) (\$111), Pressure Snubbers (2), Disposable Respirator (20), Goggles, Combination Wrench (2) & Spray Paint to Cover Grafitti on Fences (12 - 12 oz cans) (\$72)	353.70
24	Groeniger	Repair Clamp (\$522), Tees (4), Spools (2) (\$254) & Elbows (4) (\$444)	1,309.36
25	Hach	Buffer Solution (1,000 mL) (Lab)	61.02
26	Hardy Diagnostics	Agar (2 L) & EC Medium (2 L) (Lab)	180.67
27	InfoSend	April Processing Fee for Water Bills (\$1,354) & Postage (\$3,798)	5,152.46
28	Irish & Son Welding	Welding Services	960.00

Seq	Payable To	For	Amount
29		Vision Reimbursement	128.00
30	John's Dairy Equipment	Chlorine Tablets (2-50lb Drums) (STP)	345.89
31	Kaiser Foundation Health Plan	Pre-Employment Physical (Foster) & DMV/DOT Physicals (Ortiz, Rupp, Sjoblom) (\$345)	490.00
32	Landeros, Dianne	Exp Reimb: Baywork Meetings in San Jose on 5/13/16 Mileage (\$89) & Toll (\$6)	95.35
33	Lincoln Life	Deferred Compensation PPE 5/31/16	14,760.52
34		Cafeteria Plan-Childcare Reimbursement	416.66
35	MacArthur	Epoxy Paint (2 gal) (Sunset Tank)	234.92
36	Macdonald Architects	Lynwood P/S Motor Control Center Design (Balance Remaining on Contract \$3,918)	3,432.47
37	Maltby Electric	Computer Network Cable (1,000 ft)	97.75
38	Microtech Scientific	Tryptic Soy Broth (Lab)	66.73
39	Nationwide Retirement Solutions	Deferred Compensation PPE 5/31/16	1,400.00
40	Novato, City of	Street Excavation Moratorium Fee (Terry Circle)	500.00
41	Noyes, Bill	Refund Overpayment on Closed Account	33.34
42	NSI Solutions	QC Samples (4) (Lab)	227.00
43	Pace Supply	Couplings (4), Corp Stops (10) (\$266), Nut & Bolts Set (156) (\$535), Nipples (12) (\$371) & Elbows (2) (\$97)	1,404.07
44	Peterson, John	Refund Overpayment on Closed Account	75.00
45	Petterle, Stephen	May Director's Fee	424.00
46	PG&E	Balance of Fees for New Service at Reservoir Hill Tank	1,365.40
47	PG&E	Engineering Advance for New PG&E Service @ Frosty Lane	2,500.00
48	Pratt Company, Henry	14" Tilting Disk Check Valve	6,559.50
49	Protection Engineering	Anodes (100)	4,845.90

Seq	Payable To	For	Amount
50	Ramudo, Pablo	Exp Reimb: Travel Expenses for ACWA Committee Meeting in Monterey on 5/3/16 (\$410), SF Regional Board Workshop in Oakland On 5/9/16 (\$45), BAWWA Mtg in Petaluma on 5/19/16 (\$55) & AYPO (AT Your Pace Online) Training Courses (\$60)	569.75
51		Cafeteria Plan: Childcare Reimbursement	208.33
52	Reischmann, Marc	Exp Reimb: CWEA Tour & Dinner Meeting on 5/19/16	35.00
53	Rodoni, Dennis	May Director's Fee	424.00
54	Schoonover, John	May Director's Fee Less Deferred	374.00
55	Schoepp, Evelyn	Refund Overpayment on Open Account	3,709.53
56	Shell	Tool Fuel (10 gal)	30.04
57	Shoemaker Structural	Welding Services	550.00
58	Sierra Chemical	Chlorine (2 tons)	1,176.69
59	Steele, Benjamin	Exp Reimb: Water Treatment Plant Operation Vol 1 & 2	229.36
60	USA BlueBook	Dispenser, Electrode Storage Solution & Windsock (\$77)	172.14
61	Verizon Wireless	May CIMIS Station Data Transfer Fee	34.00
62	Wilson Bohannan	Brass Padlocks (40)	337.81
		TOTAL DISBURSEMENTS	<u>\$154,347.60</u>

The foregoing payroll and accounts payable vouchers totaling \$154,347.60 are hereby approved and authorized for payment.

 5/31/16
Auditor-Controller Date


 5/31/2016
General Manager Date

NORTH MARIN WATER DISTRICT CHECK REQUEST

PAYEE RICK FRAITES	
50 Forrest Rd	DATE <u>5/3/16</u> (TODAY'S DATE)
Novato, CA 94947	AMOUNT: \$212.00

I attended the No. Bay Watershed Assoc. Conference on 04/22/16
 (NAME OF MEETING OR WORKSHOP) (DATE OF MEETING)

and wish to be compensated as provided under the Board Compensation Policy.


 SIGNATURE

CHARGE TO: 56001-01-11


DISPOSITION OF CHECK

X MAIL TO PAYEE

☐ HOLD FOR _____
☐ OTHER _____

APPROVED TO PAY BY _____

T:\FORMS\CHECK REQUEST FOR BOARD.DOC
REV. 0815


Prepared By	Accounting Review	POST DATE	Vendor No. FRAI01	 NORTH MARIN WATER DISTRICT
Invoice Number (CK-Req ID)	Invoice (CK-Req) Date	Invoice (CK-Req) Amount		
CKRQ		\$212.00		
NMWD Comment				
Job Number	GL Account	Amount		
	56001-01-11	\$212.00		
TOTAL		\$212.00		

NORTH MARIN WATER DISTRICT CHECK REQUEST

PAYEE RICK FRAITES	
50 Forrest Rd	DATE <u>5/3/16</u> (TODAY'S DATE)
Novato, CA 94947	AMOUNT: \$212.00

I attended the SCWA Water Advisory Committee on 5/2/16
(NAME OF MEETING OR WORKSHOP) (DATE OF MEETING)

and wish to be compensated as provided under the Board Compensation Policy.


 SIGNATURE

CHARGE TO: 56001-01-11

DISPOSITION OF CHECK

X MAIL TO PAYEE

☐ HOLD FOR _____
☐ OTHER _____

APPROVED TO PAY BY _____

T:\FORMS\CHECK REQUEST FOR BOARD.DOC
REV. 0815

Prepared By	Accounting Review	POST DATE	Vendor No.
			FRAI01



Invoice Number (CK Req ID)	Invoice (CK Req) Date	Invoice (CK Req) Amount
CKRQ		\$212.00

NMWD Comment

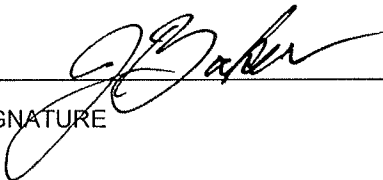
Job Number	GL Account	Amount
	56001-01-11	\$212.00
TOTAL		\$212.00

NORTH MARIN WATER DISTRICT CHECK REQUEST

PAYEE JACK BAKER	
425 Corte Norte	DATE <u>5, 17, 16</u> (TODAY'S DATE)
Novato, CA 94949	AMOUNT: \$212.00

I attended the NORTH BAY WATERSHED ASSOC. on 5, 6, 16
(NAME OF MEETING OR WORKSHOP) (DATE OF MEETING)

and wish to be compensated as provided under the Board Compensation Policy.


 SIGNATURE


CHARGE TO: 56001-01-11

DISPOSITION OF CHECK

☐ MAIL TO PAYEE
☐ HOLD FOR _____
☒ OTHER:
ACH PAYMENT


 APPROVED TO PAY BY

T:\FORMS\CHECK REQUEST FOR BOARD.DOC
REV. 0815

Prepared By	Accounting Review	POST DATE	Vendor No. BAKE01	 NORTH MARIN WATER DISTRICT
Invoice Number (CK Req ID)	Invoice (CK Req) Date	Invoice (CK Req) Amount		
CKRQ		\$212.00		
NMWD Comment				
Job Number	GL Account	Amount		
	56001-01-11	\$212.00		
TOTAL		\$212.00		

DISBURSEMENTS - DATED MAY 26, 2016

Date Prepared 5/24/16

The following demands made against the District are listed for approval and authorization for payment in accordance with Section 31302 of the California Water Code, being a part of the California Water District Law:

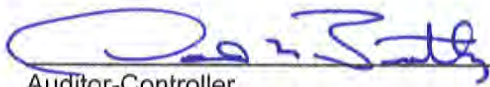
Seq	Payable To	For	Amount
P/R*	Employees	Net Payroll PPE 5/15/16	\$122,252.82
EFT*	US Bank	Federal & FICA Taxes PPE 5/15/16	55,350.94
EFT*	State of California	State Taxes & SDI PPE 5/15/16	9,662.81
EFT*	CalPERS	Pension Contribution PPE 5/15/16	33,096.60
1	Aberegg, Michael	Progress Pymts#12 & 13: RW Central Service Area Project East (Balance Remaining on Contract \$6,855)	1,150.00
2	All Star Rents	High Weed Mower for Tank Sites (3 Days)	469.50
3	Athens Administrators	Replenishment for Workers' Comp Checks Written (\$805) (4/1-4/30/16) & March Bill Review Fees	852.39
4	AT&T	Leased Lines	66.58
5	Automation Direct	Tank Transducer Enclosure (W.M. Tank Seismic Upgrade)	926.00
6	Bank of Marin	Bank of Marin Loan Principal & Interest (Pymt 55 of 240)	46,066.67
7	Bennett Trenchless Engineers	Progress Pymt#3: Norman Tank Pipeline Design (Balance Remaining on Contract \$24,194)	3,675.00
8	Burlington Safety Lab	Rubber Insulating Gloves Retested to ASTM Standards (4 pair)	85.00
9	Calif Dept of Wtr Resources	FY17 Dam Fee	9,400.00
10	Carpenter Rigging & Supply	Swivel Hook with Latch (2) ('06 Int'l Crew and '09 Peterbuilt Crew)	212.97
11	CED of Santa Rosa	Swing Out Panel for PLC @ Sunset Tank	199.27
12	Comcast	May Office Internet Connection	151.16

Seq	Payable To	For	Amount
13	Fisher Scientific	PH Electrode Storage Solution (Lab) & Sodium Standard (500 mL)	92.91
14	Government Finance Officers Assoc	Registration: Evaluating Internal Controls & Preparing a CAFR Class (8/29-30) (Williamson)	122.40
15	Ghilotti Construction	Release Retention on AEEP Reaches A-D/MSN B3 Project (Total Project Cost \$13,990,765)	349,769.13
16	Golden Gate Petroleum	Gasoline (\$2.35/gal) & Diesel (\$2.06/gal)	1,430.94
17	Grainger	Ball End Hex Key Set (Lab) & Full Body Harness (STP)	311.56
18	Groeniger	Ring Gasket (2) & Gasket (1) for Sunset Tank	231.10
19	Hertz Equipment Rental	John Deere Excavator Rental @ Pt. Reyes Tank (4 days)	913.51
20	Johnson, Lori	Novato "Cash for Grass" Rebate	400.00
21	Maltby Electric	Conduit Hubs (7), Conduit Couplings (5) & Elbows (3)	44.60
22	Marin Reprographics	Laser Bond Paper (34" x 150') (4) & Laser Bond Paper (36" x 150') (4)	669.90
23	Mayshark, Mary	Refund Alternative Compliance Reg 15 Deposit	315.00
24	Moraes, Sharon	Novato "Toilet" Rebate	200.00
25	MSC Industrial Supply	Peristaltic Pumps for STP Filters (2)	308.62
26	Mutual of Omaha	June Group Life Insurance Premium	833.52
27	Neopost USA	May Postage Meter Rental	85.73
28	Office Depot	Display Racks (3) (\$375) (Personnel Forms) & Classification Folders (60) (Engineering)	398.85
29	Pace Supply	Transition Coupling (\$336), Ram Neck Strips (4) (\$405), Brass Nipples (27) (\$360), Elbows (5) & Brass Pipe 3/4" (36') (\$343)	1,493.07

Seq	Payable To	For	Amount
30	Parkinson Accounting Systems	April Accounting Customization (\$535) & Accounting Software Support (\$1,500)	2,035.00
31	Payne, Stephen	Novato "Toilet" Rebate	100.00
32	Pacific Gas & Electric	Power: Bldgs/Yard (\$3,666), Rectifier/Controls (\$592), Pumping (\$20,156), Treatment (\$115) & Other (\$116)	24,655.83
33	Point Reyes Prop Mgmt	May HOA Dues (25 Giacomini Rd)	75.05
34	Pyshe, Deborah	Novato "Washer" Rebate"	50.00
35	Rhodes, Joyce	Novato "Toilet" Rebate	200.00
36	Scott Technology	Admin Photocopier Maint Agreement (4/30/16-4/29/17)	1,596.80
37	Shooshtarian, Ali	Refund Overpayment on Open Account	530.43
38	Smith, T. J.	Novato "Washer" Rebate	50.00
39	Sonoma County Water Agency	Conservation Program Support (1/1/16-3/31/16)	8,368.41
40	SPG Solar Facility XII	April Energy Delivered Under Solar Services Agreement	11,396.60
41	SRI	Novato "Toilet" Rebate	100.00
42	Staples Advantage	Correction Tape (10), Staplers (2), A-Z File Organizer, Stapler Removers (2), Classif Folders (20-Legal Size) (\$103), Mechanical Pencils (3), Multi-Roll Tabletop Tape Dispenser (\$82) & 4 Drawer Legal File Cabinet (4) (\$1,531)	1,832.09
43	Strahm Communications	Postage for Novato Spring 2016 Waterline (\$2,989) & Postage for West Marin Spring 2016 Waterline	3,180.95
44	Tamagno Green Products	Sludge Removal (42 yds)	1,050.00
45	TEE VAX	Washing Machine Pump (Construction Yard)	37.17

Seq	Payable To	For	Amount
46	TelePacific Communications	April Telephone Charges	598.07
47	Township Building	April Janitorial Services	1,822.84
48	Univar	Sodium Hypochlorite (P RTP)	376.09
49	USA BlueBook	Motorized Ball Valve for O.M. Discharge Line	160.22
50	U.S. Bank Card	Business Lunch (\$26) (DeGabriele), Parking for SWRCB Meeting (\$15) (DeGabriele), Birthday Lunches (\$90), Coffee, Facebook Water Cons Ads (\$115), RW Exp Central Bid Advertisement (\$660), Notice of Public Hearing - Declaration of Water Shortage (\$58), AWWA - T3-T4 Review (Foster) (\$195), Fruit Arrangement for Hospitalized Employee (\$58), Bridge Toll (\$5), Ad for Temp Laborer Position (\$75) & Output Cable for Portable Flowmeter (\$138)	1,815.54
51	Utiliworks Consulting	Progress Pymt#2: AMI Consulting (4/1-4/30/16) (Balance Remaining on Contract (\$169,523)	31,738.49
52	VWR International	Filters (200) (STP) & Phosphate Buffer (STP)	408.30
53	Waste Management	Asbestos Dumping (2 yds)	126.26
54		Vision Reimbursement	20.65
TOTAL DISBURSEMENTS			<u>\$733,563.34</u>

The foregoing payroll and accounts payable vouchers totaling \$733,563.34 are hereby approved and authorized for payment.



Auditor-Controller

Date

5/23/16



General Manager

Date

5/23/2016

DISBURSEMENTS - DATED MAY 19, 2016

Date Prepared 5/17/16

The following demands made against the District are listed for approval and authorization for payment in accordance with Section 31302 of the California Water Code, being a part of the California Water District Law:

Seq	Payable To	For	Amount
1	101 Office Products	Quarterly Toner Supply: Black (5) (\$335) & Color (3) (\$219-Engineering)	553.92
2	Alpha Analytical Labs	Lab Testing	144.00
3	Automation Direct	Pressure Transmitter (STP)	109.00
4	AWWA CA-NV Sec	Target Solutions Online Training & Certification Tracking for Employees (33)	5,907.00
5		Vision Reimbursement	368.00
6	Barrilleaux, Nick	Exp Reimb: D1 Certification (Budget \$0) (5/16-5/19)	70.00
7	Bentley, David L.	Exp Reimb: May ACWA Conference (Hotel, Mileage & Meals) (Monterey)	962.67
8	Brook, Sylvia	Novato "Cash for Grass" Rebate	400.00
9	Buck's Saw Service	Premix Gas (6 gal), Weedeater Line (2,236') (\$120), Spool Grease Gear Box (2-2.8oz tubes) & String Trimmer Head (2)	187.81
10	Building Supply Center	Screen Fiber & PVC Pipe	29.79
11	Cahenzli, Kurt	Novato "Cash for Grass" Rebate	400.00
12	California State Disbursement	Wage Assignment Order (2)	1,015.25
13	Casanovas, Chris	Refund Alternative Compliance Reg 15 Deposit	1,260.00
14	CED of Santa Rosa	Electrical Enclosure (\$477), Back Panel & Padlocking Handle (\$124)	700.65
15	Clipper Direct	June Commuter Benefit Program (1)	173.00
16	Diggs, James	Retiree Exp Reimb (May Health Ins)	306.09
17	Dobbs, Waltraut Grau	Novato "Cash for Grass" Rebate	400.00

Seq	Payable To	For	Amount
18	Fisher Scientific	Syringes (100), Chlorine Reagent (\$167), Forceps, & Bromothymol Blue (Lab)	266.54
19	Frontier Communications	Leased Lines	1,594.43
20	Ghilotti Construction	Progress Pymt#23: Construct AEEP Reaches A-D/MSN B3 Project (Balance Remaining on Contract \$139,618)	3,994.28
21	Goodpaster, Stacie	Reimb: Bagels & Coffee for CA Div of Drinking Water & CA/NV AWWA Workshop at NMWD	102.94
22	Grainger	Carton Sealing Tape (6 rolls), Hand Cleaner (50 oz), Security Camera & Brackets (\$1,094) (Yard), Bypass Lopper, Pressure Snubbers for Olema P/S (2), Hand Sanitizer (17 oz), Gas Detector Battery (2) (STP)	1,228.86
23	Groeniger	14" PVC Flange	429.56
24	Hach	Ampule Kit, & Reagents (300) (\$194) (STP)	463.46
25	Hipps, William G.	Novato "Toilet" Rebate	100.00
26	Homeward Bound of Marin	Refund Excess Advance for Const over Actual Job Cost-OMA Village	3,497.25
27		Cafeteria Plan: Uninsured Medical Reimbursement	768.50
28	Kessler, Sue	Retiree Exp Reimb (May Health Ins)	315.28
29	Lincoln Life	Deferred Compensation PPE 5/15/16	14,760.52
30	Maltby Electric	Electrical Conduit & Fittings	260.04
31	Marin Landscape Materials	Landscaping Fabric (120 yds), Crushed Rock (1 yd) & QuikMix (42 sacks)	332.67
32	Marin County Ford	Seat Belt Assembly ('12 F250), Fuel Door & Hinge Assembly ('10 F150), Transfer Case Shift Lever & Cable ('10 F150) & Exhaust Gas Temperature Sensor ('08 F350 4 x 4)	281.59
33	Mello, John	Retiree Exp Reimb (May Health Ins)	949.78
34	Moore, Doug	Retiree Exp Reimb (May Health Ins)	949.78
35	Nationwide Retirement Solutions	Deferred Compensation PPE 5/15/16	1,400.00

Seq	Payable To	For	Amount
36	North Marin Auto Parts	Automotive Fuses (20), Spray Paint (3-12 oz cans), Disposable Gloves (600) (\$117), Oil Filter (5), Air Filter (5), Wiper Blades (7), Oil (17 qts) (\$91), Diesel Engine Oil (14 gal) (\$234), Fuel Filter (2), Trailer Breakaway Switch (2), Interior Filter, Sanding Pads (12), Mud Flap (2), RTU Gasket Maker (2-3oz tubes), Light Bulbs (6), Oxygen Sensor (\$216), Shop Rags (10 lbs) (\$127), Thermostat Kit, Stop/Tail Lights (4) (\$78)	1,336.18
37	North Bay Gas	Oxygen & Acetylene Cylinders, Nitrogen (STP) (\$596) Oxygen (\$234), Welding Nozzle, Tips, Diffuser, Pads, Wire (Shop), Cutting Torch Tip, Welding Helmet, April Cylinder Rental	1,104.18
38	Novato Builders Supply	Fence Wire (Plant Cages-STP)	65.24
39	Office Depot	Label Tape (2 packs)	35.82
40	Pace Supply	Elbows (25) (\$313), Nipples (3), Couplings (43) & Brass Pipe (3/4") (12')	854.35
41	Petaluma Elks Lodge	Deposit for 2016 Holiday Party	500.00
42	NMWD Petty Cash	Petty Cash Reimbursement: Safety Mtg Snacks (3), Gas, Bridge Toll	73.49
43	Pini Hardware	Pipe Nipples (8), Valves (4), O-Rings (4), Bushings (4), Contact Cleaner (3), Calibrated Container (8), Paint (5 gal), Dolly (2), Stud (2), Insulated Hose Clamps (2), Tool Box, Conduit for Antenna Mast (2), Calibrated Containers (8), Nuts (4), Angle Brackets (4), Beam Clamps (2), Bolts (6), Conduit Couplings (6), Conduit, (3/4") (10'), Brush Palm Soap, Sponge Holder (STP), Romex Wire, Flourescent Bulbs (2), Clamps (2), Adaptors (2) & Elbow	413.10
44		Childcare Reimbursement	208.33
45	Semorile, Linda	Novato "Cash for Grass" Rebate	90.00
46	Shirrell Consulting Services	May Dental Insurance Admin Fee	299.45
47	Shirrell Consulting Services	April Dental Expense	3,763.80
48	Smith, Beverly	Novato "Cash for Grass" Rebate	350.00

Seq	Payable To	For	Amount
49	Snap-On Industrial	Light & Heavy Duty Vehicle Diagnostic Scanners & Software	6,289.08
50	Stafford, Vernon	Retiree Exp Reimb (May Health Ins)	315.28
51	Thatcher Company of California	Ferric Chloride (4,800 lbs)	4,625.10
52	Univar	Sodium Hypochlorite (3 drums)	565.17
53	US Bank	April Safekeeping Fee-Treasury Securities (4/1-4/30/16)	128.50
54	White & Prescott	Progress Pymt #6 & 7: Slade Park Water Line Easement & Point Marin Water Line Easement (Balance Remaining on Contract \$9,640)	1,170.00

TOTAL DISBURSEMENTS

\$66,869.73

The foregoing payroll and accounts payable vouchers totaling \$66,869.73 are hereby approved and authorized for payment.



Auditor-Controller

5/16/16
Date



General Manager

5/16/2016
Date

BOD MISC



NEWS RELEASE

FOR IMMEDIATE RELEASE:

May 18, 2016

CONTACT:

Nicole Dorotinsky, Research & Program Coordinator, Santa Rosa Water
707.543.3366, ndorotinsky@srcity.org



Take it From the TAP! program encourages Sonoma and Marin to choose tap water first

Santa Rosa, CA –The Sonoma-Marin Saving Water Partnership launched a regional Take it From the TAP! multimedia campaign this week. Take it From the TAP! is a practical and youthful campaign focused on educating public water system users about the environmental, economic and health benefits of choosing tap water.

The Sonoma-Marin Saving Water Partnership (Partnership), representing 11 water utilities in Sonoma and Marin counties, joined forces to spread the Take it From the TAP! message throughout the region by providing classroom education, community outreach and a robust multimedia campaign.

The Take it From the TAP! campaign touts the tagline -- "Pitcher, a better way. Choose tap water." The campaign's mascot, Dewey the water drop, is smart with his glasses, super with his cape, and safe with his life preserver. Dewey, in his many forms, teaches our community about reducing waste, saving money and staying hydrated.

"Take it From the TAP! is a great way to engage our community in a conversation about the

high quality and great value of our regional water supply,” said Chris DeGabriele, General Manager, North Marin Water District

The Take it From the TAP! program launch includes the release of the TakeitFromtheTAP.org website, partner toolkit and resources, and an educational multimedia campaign. The educational campaign addresses commonly asked questions about where our water comes from and water quality. Additionally, the program offers ideas and tips to encourage our community to choose tap water first.

“It’s important that our community knows that our local tap water is high quality, costs less than a penny per gallon and is environmentally friendly,” said, Linda Reed, Interim Director of Santa Rosa Water.

For more information visit TakeitFromtheTAP.org.

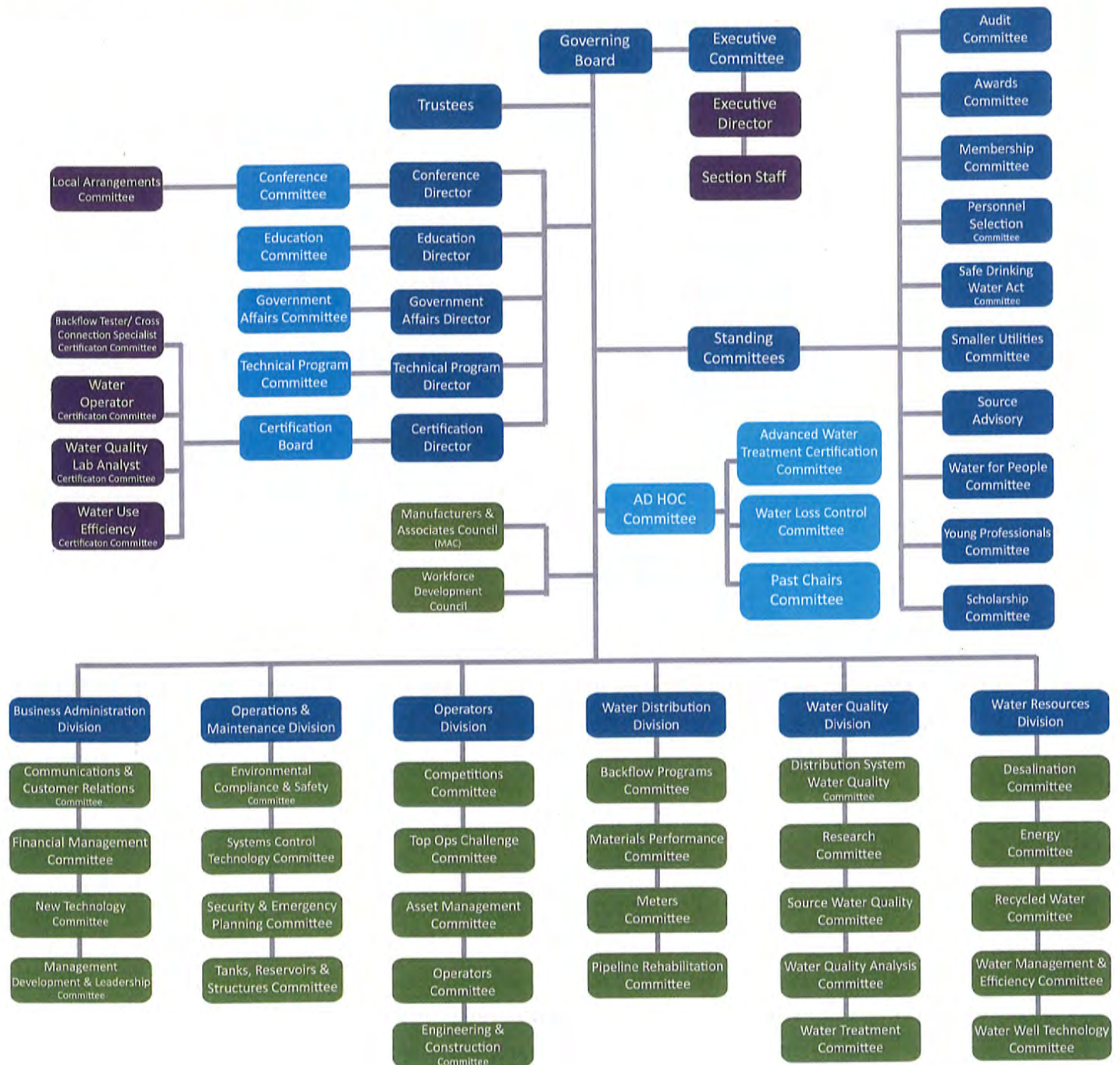
About Take it From the TAP!

Take it From the TAP! began in 2008 at the City of Santa Rosa to reduce employee purchases of one-time use plastic water bottles. Over the years the program grew into a community focused education program to engage water customers in a conversation about where our water comes from, water quality, and the economic, health and environmental benefits of drinking tap water. In 2014 the Sonoma-Marín Saving Water Partnership, representing 11 water utilities in Sonoma and Marin counties, voted to expand the reach of Take it From the TAP! by supporting a regional campaign.

About The Sonoma-Marín Saving Water Partnership

Sonoma-Marín Saving Water Partnership represents 11 water utilities in Sonoma and Marin counties who have joined together to provide a regional approach to water use efficiency. The utilities are the Cities of Santa Rosa, Rohnert Park, Petaluma, Sonoma, Cotati; North Marin, Valley of the Moon and Marin Municipal Water Districts, Town of Windsor, California American Water, and Sonoma County Water Agency.

CA-NV AWWA Organizational Chart



American Water Works Association

California-Nevada Section

EXECUTIVE COMMITTEE



Kirk Medina
California-Nevada
Section
Section Chair



Heather Collins
Metropolitan WD
of So. California
Chair-Elect



Uzi Daniel
West Basin
Municipal Water
Vice-Chair



Sue Mosburg
Sweetwater
Authority
Past Chair



Steve A. Dennis
California-Nevada
Section
AWWA Director



Phil Holderness
California-Nevada
Section
AWWA Director



Katherine (Kate) Nutting
Golden State
Water Company
Treasurer



Craig Thompson
West Yost &
Associates
Assistant Treasurer



Tim Worley
California-Nevada
Section
Secretary

TRUSTEES



Joe Wong
Brown & Caldwell
Water Resources



David Hokanson
Trussell
Technologies
Water Quality



Joy Eldredge
City of Napa
Operators



Drew McIntyre
North Marin WD
Operations &
Maintenance



Andrew DeGraca
San Francisco PUC
Business
Administration



Conrad Tona
City of Redding
Water
Distribution

DIRECTORS



Michael Gualtieri
La Habra Heights
County Water Dist.
Co-Conference Dir.



Tammie Myers
Co-Conference
Director



Debra Kaye
V & A Consulting
Engineers
Certification Director



Darrin Price
Sun Valley Gen.
Improvement
District
Assistant
Certification Dir.



Erin Mackey
Brown & Caldwell
Technical
Programs Director



Tarrah Henrie
Corona
Environmental
Assistant Technical
Programs Director



Rosie Thompson
MWD of So. California
Government Affairs
Director

The Education Director position was vacant at the time of publishing.

COMMITTEES

Program – Standing

Water Operator Certification

Vacant, *Chair*

The Water Operations Certification Committee is responsible for the activities and promotion of the Water Treatment and Water Distribution Certification Programs.

MEMBER: Larry Lyford

Water Quality Lab Analyst Certification



Stacie B. Goodpaster, *Chair*

The Water Quality Laboratory Analyst Certification Committee is responsible for the activities and promotion of the Water Quality Laboratory Analyst Certification Program.

MEMBERS: Claudia Hidahl, Lindsay Neun, Terry Powers

Water Use Efficiency Certification

Linda Yager, *Chair*

The committee shall be responsible for the preparation of examination and the training sessions. The committee shall review, with Administrator, changes in the certification program, training requirements and make recommendations to the certification program, training requirements to the certification boards for such changes. The committee shall also be responsible to maintain rules, regulations, procedures and examination enhancements. The chair shall serve as a committee member of the Certification Board and be responsible for communication between the Certification Board and the Water Use Efficiency Certification Committee.

MEMBERS: Angela S. Anderson, Cathleen Brennan, William Granger, Scott W. Harris, Thomas H. Hawes, Francie Kennedy

*Membership by appointment

WE ARE H₂OBSSESSED.

carollo
Engineers...Working Wonders With Water®

WATER
OUR FOCUS
OUR BUSINESS
OUR PASSION

1.800.523.5826 | carollo.com

Standing Committees

Audit



Larry W. Lyford, *Chair*

The Audit Committee will be responsible for recommending the hiring or termination of the audit firm, and the compensation to the audit firm. The Audit Committee must meet with the auditor to satisfy itself that the financial affairs of the Section are in order, must review the audit report, and must approve any non-audit services provided by the audit firm to the Section. The Audit Committee members are appointed by the Chair

MEMBER: Jennifer Shimmin

Awards



James P. Elliott, *Co-Chair*

Joe Guistino, *Co-Chair*

The California-Nevada Section desires to recognize, to the maximum extent possible, the good work and service by its members to the Water Industry and Section by honoring deserving members through the nomination and presentation of Section and National Awards. The purpose of this committee is to coordinate the activities of the Awards Subcommittees and coordinate the notification, publication and presentation of the individual award recipients to the Section Membership. The committee facilitates the identification of potential candidates for all current Association and Section awards and any future awards that may be established. The committee and its sub-committees review the purpose and eligibility requirements of each national and section award and select nominees who best meet the spirit and intent of each award. The chair of the Awards Committee reports directly to the Governing Board.

MEMBERS: Colter Andersen, Destree Bascos, Philip L. Brun Jr., Andrew F. DeGraca, Steve A. Dennis, Joy Eldredge, Don Kaiser, Bruce A. Macler, Drew McIntyre, Glenn E. Reynolds, Chuck Sihler, Rosemary Smud, Mark S. Soldati, Joe Wong, Tanya Yurovsky

Membership



Rosemary Smud, *Chair*

The purpose of this committee is to: 1) plan and implement efforts to stimulate enrollment of new AWWA members; 2) develop and implement a membership retention program, which includes committee assignments, introduction to Section officers, and hospitality at meetings and conferences, with particular attention to newly recruited members and those not previously involved in Section activities. The chair and the vice-chairs shall work closely with local water utility groups, and other Section committees and the Public Information Director to accomplish this purpose. Members and committee officers will provide Section wide coverage and shall include manufacturers' representatives.

MEMBERS: Tom Bloomer, Philip L. Brun Jr., Heather L. Collins, Uzi Daniel, Jacques A. DeBra, Steve A. Dennis, James P. Elliott, Joe Guistino, Drew McIntyre, Sue Mosburg, Katherine S. Nutting, Dawn R. White, Tim Williams

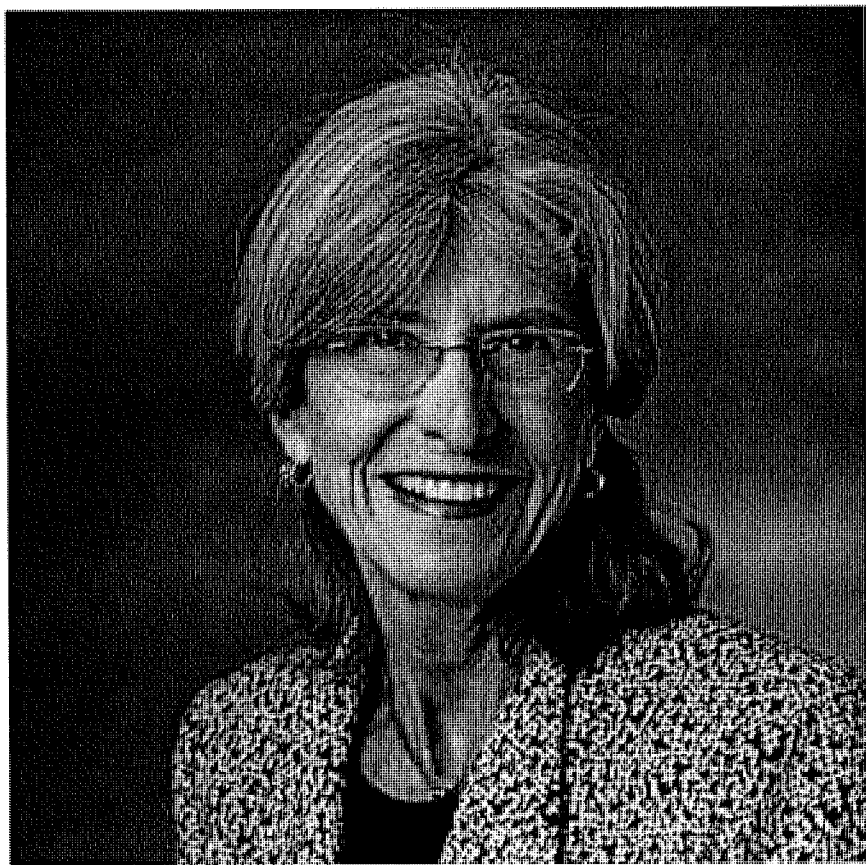
Personnel Selection



Philip L. Brun Jr., *Chair*

1. The Section shall have a Personnel Selection Committee of five members appointed by the Section Chair prior to November 10th of each year and confirmed by the Governing Board through the Consent Calendar at its Budget meeting. 2. All committee members must be current members at the time of their appointment. They shall be appointed for three years and may be appointed for one succeeding term. At all times, at least a majority of the committee must be current Board members. Their terms shall be staggered. Appointments to fill vacancies shall be for the term of the original appointee. 3. The committee shall select candidates for Section or National office, whether elective or appointive, except that of the Secretary, and the Treasurer which shall

MacLeamy joins IJ editorial board



Jeanne MacLeamy, Novato City Council candidate. (Robert Tong/Marin Independent Journal) 2015

POSTED: 05/16/16, 1:34 PM PDT | UPDATED: 2 HRS AGO 0 COMMENTS

Former Novato mayor Jeanne MacLeamy has been selected as the new public member of the Marin Independent Journal's editorial board.

She succeeds Juanita Edwards, a longtime Marin City community leader, who has served in that role since Jan. 30.

MacLeamy will join IJ Publisher Rob Devincenzi and two editors at the board's weekly meetings, during which local issues in the news are discussed to frame the IJ's editorials.

IJ Editor Robert Sterling and Opinion Page Editor Brad Breithaupt are also members of the board.

The board's public member is not involved in the paper's political endorsements.

MacLeamy was born in Flint, Michigan and is a graduate of the University of Michigan.

She has lived in Marin for 40 years, 30 of those in Novato.

She and her husband have two grown children and three grandchildren.

MacLeamy is an architect who has practiced for 40 years and was elected to the American Institute of Architects' College of Fellows in 2015.

She served on the Novato Design Review Committee before being elected to the Novato City Council in 2003. She served three terms on the council, which included three yearlong terms as mayor.

She was defeated in her bid for a fourth term in November.

MacLeamy is a past president of Wednesday Morning Dialogue and is now a member of the Pacheco Valle Firewise Committee.

Public members of the editorial board serve terms lasting several months.

IJ readers interested in serving on the board are invited to send email to opinion@marinij.com.

PD Editorial: Lynda Hopkins for 5th District supervisor

THE EDITORIAL BOARD

BY THE EDITORIAL BOARD | May 15, 2016, 12:11AM | Updated 1 hour ago.

Voters in Sonoma County's 5th District, which stretches from Roseland to Bodega Bay and includes all coastal areas, have a choice on June 7. And it's not just about picking which of five candidates to succeed Efren Carrillo as "mayor" of west county. The choice is whether to help the county move forward or take a step back. It's that simple.

Among the candidates, Lynda Hopkins presents the best opportunity to move past the acrimonious political battles of yesteryear toward new and creative ways of addressing the prevailing needs of today. These needs include creating affordable housing, fixing roads, adapting to a changing climate and providing sound fiscal management for a county with a \$1.5 billion budget and lingering — and potentially staggering — pension problems.

An organic farmer, the Stanford-educated Hopkins, 32, emerged on the political scene with her sensible, middle-ground recommendations for resolving conflicts over plans by the Lytton Rancheria Band of Pomo Indians to build up to 360 homes, as well as a hotel resort and a 200,000-case winery, on properties west of Windsor. Although lacking in experience in elected office, Hopkins has proven to be a quick study on county issues and has demonstrated innovative thinking with ideas such as creating community improvement districts in Bodega Bay and along the Russian River as a way to ensure these residential pockets directly benefit from tourist dollars spent there. She's suggested using Open Space District land already paid for with taxpayer funds to help mitigate requirements for tiger salamander habitat to encourage needed projects such as affordable housing. She also seeks a no-

the county's pension problems and is another strong candidate in this race. The other two, Marion Chase of Santa Rosa and Tim Sargent of Forestville, are both bright and well-intentioned. But neither can match the others in terms of support or knowledge of the workings of the county.

The Press Democrat recommends Lynda Hopkins for supervisor.

P

Yorba Linda legal fight turns nasty as residents seek to overturn water rate hike



A sign in Yorba Linda urges the recall of water board members who approved a \$25 increase in water rates to make up for lost revenue under the state's emergency drought regulations. (Christina House / For The Times)

Matt Stevens

With its tract homes, expansive lots and rural soul, Yorba Linda exemplifies the sort of sleepy suburb that would coin the motto “Land of Gracious Living.”

Recently, though, this upscale Orange County city of 66,000 has been anything but.

Longtime residents are engaged in a legal brawl with their water provider, punctuated by vitriol and name-calling that some say reminds them of the 2016 presidential campaign.

At issue is a \$25-per-month rate hike that Yorba Linda Water District officials say was needed to keep the agency solvent after state-mandated water conservation blew a hole in its budget.

A group of residents said the sudden spike was much higher than necessary and collected enough signatures to put a referendum on the water rates before voters. The water district refused to back down and declared the referendum improper under the law. The residents sued.

An Orange County Superior Court judge is expected to rule in June on whether customers can void a rate increase using this type of ballot measure. If these Yorba Linda residents get their way, the referendum will provide them with a new tool they can use to challenge rates more easily than under existing law.

But the decision potentially carries far wider implications. If the Yorba Linda residents win, the case would embolden other customers across California to use a referendum any time officials propose a rate hike, legal experts and water watchers say.

See the most-read stories
this hour >>

“It’s the road to disaster for utilities,” said Rob Hunter, general manager of the Municipal Water District of Orange County. “People would just say, ‘No, we don’t want to pay more money’ ... [and] your rates roll back to

what they were.”

To the members of the Yorba Linda Taxpayers Assn., that’s the point.

“We are fighting for our constitutional right ... for voters to be able to decide a water-rate increase,” said Ed Rakochy, the association’s community relations director. “This [water district] board believes that they serve themselves but not the customers. They serve us.”

For decades, the water district hummed along, collecting vast sums of money from

residents who used lots of water on citrus groves and massive green lawns. That revenue helped cover the district's operating costs and drive down the flat fee charged for water service paid by all customers -- including those who used comparatively little water.

The public thinks water is free ... but no one thinks about the infrastructure you need to get the water. That's what you're paying for.

— Sanjay Gaur, vice president of Raftellis Financial Consultants

But heavy consumption became taboo in the fourth year of California's drought, and when Gov. Jerry Brown ordered hundreds of districts statewide to slash their water use, Yorba Linda's revenue model was suddenly threatened. State regulators told the district to slash its use by 36% from 2013 levels.

If their customers cut back that much, officials concluded that the district would lose approximately \$9 million in fiscal year 2016. To help cover the gap, the district hastily raised the basic service charge from about \$16 to \$41.



California's hard-hit water districts will get a chance to ask regulators for relief

The taxpayer group collected protest letters in an effort to overturn the new water rates through the cumbersome process prescribed by Proposition 218, a 1996 law aimed at ensuring that voters approve all taxes and most charges levied on property owners.

But the group did not get a majority of property owners to formally protest the water rates, as the law requires, so the increases took effect in October.

About a month later, the residents submitted a referendum, which required far fewer signatures to move forward. The referendum petition, which the county registrar later certified, demanded that the district repeal the

new rates or put them up to a vote. But the water district rejected the referendum, saying it was not valid under Proposition 218.

By January, residents sued the district, asking a judge to order the water provider to honor the referendum. Two months later the taxpayers association began a campaign to recall two of the water district's five board members. Two others are up for reelection in the fall.

"People are being taken advantage of," said Jeff Decker, chairman and co-founder of the taxpayers association. "How much is enough?"

Over the last several months, the fight between the water district and some of its customers has become heated and personal.

The district's general manager said someone broke into his car and stole his work computer. A spokesman for the district produced a letter sent to his home in which "a group of concerned YLWD customers" threatened to "drop by." On the taxpayer association's Facebook page, a few residents called for a boycott of a local restaurant owned by one of the water district's board members.

"We've got an election coming and we can't wait," longtime resident Kent Ebinger said at a district board meeting in January. "If somebody has the word 'incumbent' next to his name, hell, he might as well have the name of a rapist or a child molester as far as I'm concerned."

Water district board members have returned fire, accusing the group of attempting to seize political power.

"The land of gracious living is apparently no longer the land of gracious people," the agency's attorney said at a public meeting.

In an interview, Marc Marcantonio, the water district's general manager, invoked his actual wartime experience to describe the level of hostility.

"I'm a big guy. I've been in the Army 23 years. ... I've endured a lot from the Vietnam era and everything else," Marcantonio said. "But this has been the most insulting, toxic environment -- I just can't believe what has transpired."

Thanks in large part to the drought and Brown's executive order, the vast majority of California's urban water suppliers have raised or are raising their water rates, officials say.

As water sales decrease, most water agencies need to do what Yorba Linda did: increase their basic service charge to cover a larger share of their fixed costs, such as system maintenance and personnel. The fixed costs, experts say, make up the majority of a water district's expenses and must be paid regardless of how much water customers use.

"The public thinks water is free ... but no one thinks about the infrastructure you need to get the water.

That's what you're paying for," said Sanjay Gaur, vice president of Raftelis Financial Consultants, which performed Yorba Linda's recent rate study.

As a result, many water district officials are watching the Yorba Linda case and worrying about its potential impacts on their own rate-making ability.

Repealing water rate hikes through a referendum could cause suppliers to default on debt obligations and go bankrupt, officials say.

Nobody in Yorba Linda wants to hinder the water district's ability to deliver water, make capital improvements or perform other basic operations, Decker said. That, he added, "would be foolish."

But officials warn that too much cost cutting could even lead to consequences like those in Flint, Mich., which faces a contaminated-water crisis.

“They got lower water rates,” said Ric Collett, president of Yorba Linda Water District's board. “Do you want that?”

Marin water agencies likely to ease mandates as state issues new rules



The spillway of Alpine Lake Dam dumps overflow water in January. The lake near Fairfax was full for the first time after a long drought. Frankie Frost — Marin Independent Journal

By Mark Prado, Marin Independent Journal

POSTED: 05/18/16, 6:24 PM PDT | UPDATED: 14 HRS AGO 3 COMMENTS

Strong water supplies in Marin will likely reduce or eliminate the need for mandatory conservation under a ruling issued by state water officials Wednesday.

The state Water Resources Control Board decided to allow hundreds of water districts to set their own conservation goals after a wet winter eased the five-year drought in some parts of the state.

Beginning next month, districts serving nearly 40 million Californians will compare water supply and demand with the assumption that dry conditions will stretch for three years. The districts would then set savings goals through January and report their calculations to the state.

The new approach lifts a statewide conservation order enacted last year that requires at least a 20 percent savings.

“It definitely looks at regional water conditions,” said Chris DeGabriele, general manager of the North Marin Water District, of the new rule. “It’s a supply-based approach.”

DeGabriele expects his district will be able to meet the new standards and get out from under state mandates.

State orders issued last May require the Marin Municipal Water District to cut use by 20 percent and the North Marin Water District by 24 percent to battle the drought. The state developed those percentages by looking at per-capita water use. The higher the water use, the more a community has to cut back.

Since then North Marin has shown a 32 percent savings, Marin Municipal a 21 percent cutback. The latter agency — its reservoirs were 97 percent full as of Wednesday — will also look more closely at state water use requirements.

“Once we receive the regulations from the state we will develop a recommendation and bring it to the board of directors for their consideration and action within the required time frame,” said Libby Pischel, agency spokeswoman.

In 2010, the region established the Sonoma-Marín Saving Water Partnership. The group includes nine North Bay cities and water districts that use Russian River water, including the two Marin water agencies.

DeGabriele had sent a letter on behalf of the partnership to state water officials asking them to rescind conservation rules for the region.

“Drought conditions do not exist in Sonoma or Marin counties’ local and regional water supply,” DeGabriele wrote. “Reservoirs are full, and normal water year conditions prevail on Lagunitas Creek and the Russian River.”

Any changes to mandates don’t mean water use goes back to business as usual. Bans on actions such as wasting water by washing sidewalks with a hose or cars without a shut-off nozzle will become permanent under the new regulation.

Felicia Marcus, chair of the state Water Resources Control Board, called it a difficult set of decisions for the panel.

“We don’t want to cry wolf. We also don’t want us to put our head in the sand,” she said. “This compromise allows us to keep our eyes wide open.”

Water board officials rejected a proposal for a modest statewide conservation level, saying it contradicted the intent of the plan to empower local districts.

Regulators said they maintain the authority to return to strict conservation, if conservation dramatically slips or if

Advertisement

last winter’s rain and snow turns out to be a blip in the easing of the drought.

Regulators considered the new approach after El Niño storms delivered nearly average amounts of rain and snow this winter in Northern California, filling key reservoirs.

Max Gomberg, a senior climate scientist for the state water board, said Californians understand the drought remains critical. He doesn't expect people to suddenly begin wasting water with the changes.

"Californians have shown that when there's a serious drought and a need to conserve, people step up and pitch in," he said.

Environmentalists have urged state regulators not to let up on conservation, citing forecasts that indicate the possibility of a dry winter ahead. Much of the state remains in severe drought, said Tracy Quinn, a senior policy analyst for the Natural Resources Defense Council.

"This makes a compelling case for not relaxing conservation standards as we head into the hottest, driest and highest water using season of the year," she said. "Conservation needs to be a way of life in California."

The Associated Press contributed to this report.