



NORTH MARIN WATER DISTRICT
AGENDA - REGULAR MEETING
 October 7, 2014 – 7:30 p.m.
 District Headquarters
 999 Rush Creek Place
 Novato, California

Information about and copies of supporting materials on agenda items are available for public review at 999 Rush Creek Place, Novato, at the Reception Desk, or by calling the District Secretary at (415) 897-4133. A fee may be charged for copies. District facilities and meetings comply with the Americans with Disabilities Act. If special accommodations are needed, please contact the District Secretary as soon as possible, but at least two days prior to the meeting.

Est. Time	Item	Subject
7:30 p.m.		CALL TO ORDER
	1.	APPROVE MINUTES FROM REGULAR MEETING , September 16, 2014
	2.	GENERAL MANAGER'S REPORT
	3.	OPEN TIME: (Please observe a three-minute time limit)
		This section of the agenda is provided so that the public may express comments on any issues not listed on the agenda that are of interest to the public and within the jurisdiction of the North Marin Water District. When comments are made about matters not on the agenda, Board members can ask questions for clarification, respond to statements or questions from members of the public, refer a matter to staff, or direct staff to place a matter of business on a future agenda. The public may also express comments on agenda items at the time of Board consideration.
	4.	STAFF/DIRECTORS REPORTS
		CONSENT CALENDAR
		The General Manager has reviewed the following items. To his knowledge, there is no opposition to the action. The items can be acted on in one consolidated motion as recommended or may be removed from the Consent Calendar and separately considered at the request of any person.
	5.	Consent-Approve: Salary Schedule Revision
	6.	Consent-Approve: Approval for Out-of-State Travel to Attend Water Smart Innovations 2014 Conference
	7.	Consent-Approve: Renewal Grazing Leases - Grossi & Leveroni
	8.	Consent-Approve: Amendment to Water Service Agreement – Shell Gas Station – 2085 Novato Blvd
		ACTION CALENDAR
	9.	Approve: Commuter Benefit Program
	10.	Approve: Third Party Labor Compliance Inspection for Atherton Tank Rehabilitation Project – Contractor Compliance & Monitoring, Inc.
	11.	Approve: CSW Stuber-Stroeh Contract Amendment Marin Sonoma Narrows/AEEP Project
8:00 p.m.		INFORMATION ITEMS
	12.	Lead and Copper Rule Compliance in the West Marin Water System
	13.	Lockbox Service Update

All times are approximate and for reference only.

The Board of Directors may consider an item at a different time than set forth herein.

(Continued)

Est. Time	Item	Subject
	14.	TAC Meeting - October 6, 2014
	15.	NBWA Meeting – October 3, 2014
	16.	MISCELLANEOUS Disbursements Salinity Notice (9/18, 9/23) Letter to Marin County Parks <u>News Articles:</u> Changes to water releases from Lake Mendocino helping Big thumbs up for Warm Springs Dam Marin Voice: California needs Prop. 1 water bond 1964: NMWD decides on S.F. architects A watershed’s perspective on changes on the horizon First phase of Dry Creek makeover nears completion Humboldt water district mulls trans-county pipeline
	17.	Closed Session: Existing Litigation pursuant to Paragraph (1) of subdivision (d) of Section 54956.9: One case: (San Francisco Regional Water Quality Control Board - Administrative Civil Liability Complaint R2-2014-1024)
	18.	Closed Session: Conference with Real Property Negotiators as allowed under Government Code 54956.8. Property: Recycled Water Agreement between North Marin Water District and Marin Country Club; District Negotiators: General Manager, Chief Engineer, and Counsel; Negotiating Party: Marin Country Club; Under Negotiation: Price and Terms
9:00 p.m.	19.	ADJOURNMENT

1

1 Water Bond Collation

2 Mr. DeGabriele advised the Board that he participated in a conference call on the water
3 bond collation and noted that enabling legislation for the water bond did pass and was signed by the
4 Governor.

5 Salinity Intrusion in Lagunitas Creek

6 Mr. DeGabriele informed the Board that staff has received good reports on salinity intrusion
7 all summer in Lagunitas Creek but today's sample showed the level of sodium at 61mg/l. He stated
8 that there will be a notice printed in the Pt. Reyes Light this Thursday and that staff will request
9 Marin Municipal Water District release water from Kent Lake.

10 **OPEN TIME**

11 President Rodoni asked if anyone in the audience wished to bring up an item not on the
12 agenda there was no response.

13 **STAFF / DIRECTORS' REPORTS**

14 President Rodoni asked if staff or Directors wished to bring up an item not on the agenda
15 and the following items were discussed:

16 Mr. McIntyre informed the Board that this afternoon staff had an Atherton Tank
17 Rehabilitation Project pre-construction meeting. He noted that the contractor is getting in the
18 submittals and should commence work within the next two to three weeks. He stated that the
19 completion date for this project is in June. He advised the Board that he would keep them apprised
20 with the progress.

21 Director Baker asked if there would be issues completing the project during the winter
22 season. Mr. McIntyre stated that the only issue would be the outside portion of the project and that
23 has a short schedule duration. He informed the Board that from an operations stand point, now is
24 the best time to do the work due to the lower demands of water during the winter. .

25 Director Fraites advised the Board and staff that he would be absent from the next Board
26 meeting on October 7th and would not be able to attend the North Bay Watershed Meeting and
27 Director Baker would attend in his absence.

28 **MONTHLY PROGRESS REPORT**

29 Mr. DeGabriele provided the Board with the August Monthly Progress Report. He stated
30 that in August water production in Novato was down 16% compared to one year ago and in West
31 Marin was down 8%. Robert Clark informed the Board that the Stafford Treatment Plant ceased

1 production for the season today, and maintenance work will begin. Mr. DeGabriele advised the
2 Board that Stafford Lake is 27% full, at 1,180 acre feet and Lake Mendocino water supply is at 27%
3 (3,585AF). He noted that the storage curve at Lake Mendocino has begun to flatten as a result of
4 reduced releases to meet in stream flow requirements, pursuant to the Temporary Urgency Change
5 Order. Mr. DeGabriele informed the Board that Lake Sonoma water supply is at 62%, holding
6 150,770 acre feet.

7 Mr. DeGabriele informed the Board that August saw an extraordinary number of leaks both
8 on the consumer and District side, although the high bill complaints were down significantly from one
9 year ago.

10 David Bentley reviewed the Auditor Controller's Monthly Report of Investments, showing that
11 the District holds \$13,369,000 in its portfolio, earning 0.47% interest.

12 **CONSENT CALENDAR**

13 On the motion of Director Schoonover, seconded by Director Petterle and unanimously
14 carried, the following items were approved on the consent calendar:

15 **NOMINATION OF DAVID BENTLEY TO SERVE AS BOARD MEMBER OF ACWA REGION 1**

16 The Board approved nominating David Bentley to serve as a Board member of the Association
17 of California Water Agencies Region 1. The Region 1 Board covers the area from the Northern
18 California border to Marin County, along the coastal range. Current Board Members include
19 representatives from Humboldt Bay Municipal Water District in Eureka, McKinleyville Community
20 Services District, Hidden Valley Lake Community Services District in Clearlake, Sonoma County
21 Water Agency, City of Santa Rosa, and Marin Municipal Water District. The Board unanimously
22 approved Resolution 14-20 entitled: "A Resolution of the Board of Directors of the North Marin
23 Water District Placing in Nomination David Bentley as a Member of the Association of California
24 Water Agencies Region 1 Board."

25 **CALPERS RESOLUTION TO REDUCE DISTRICT CONTRIBUTION**

26 The Board adopted a resolution to reduce the District's employer paid retirement contribution by
27 1.6% effective October 1st. The resolution is consistent with the NMWD Employee Association
28 Memorandum of Understanding. Beginning October 1st, employees will pay 4.8% and the District will
29 pay 3.2% of the employer-paid member contributions. The Board unanimously approved Resolution
30 14-21 entitled: "Resolution of the Board of Directors of North Marin Water District for Employer Paid
31 Member Contributions."

1 **ACTION CALENDAR**

2 **STONE TREE GOLF, LLC ASSIGNMENT AGREEMENT**

3 Drew McIntyre reminded the Board that nearly 10 years ago the Board approved the Original
4 Recycled Water Service Agreement with Black Point Partnership and that over three years ago an
5 assignment was made to Stone Tree Golf Course LLC. He advised the Board that Ann Mullroy,
6 Stone Tree owner, provided the District with a letter indicating Stone Tree had been sold to a new
7 entity, The Bay Club Company. Mr. McIntyre informed the Board that District legal counsel drafted a
8 new assignment agreement and would like the Board to authorize the General Manager to execute
9 the agreement. Mr. McIntyre stated that it is his understanding that the new organization's official
10 sale date will be at the end of next month and the District will make sure that the organization is
11 properly licensed by the state. He noted that once those two items were complete, the District would
12 execute the new assignment agreement with The Bay Club Company.

13 Director Schoonover asked if District legal counsel had reviewed the agreement. Mr.
14 McIntyre informed the Board that District legal counsel prepared the agreement.

15 Director Baker asked if there were any foreseeable lingering issues that are unique to the
16 operations at Stone Tree. Mr. McIntyre stated that there are no issues as of now and that Stone
17 Tree has a well established reputation at the District, making all of its payments on time and that the
18 District has gone from a total of three recycled water customers to 44 and that Stone Tree is still the
19 largest recycled water customer.

20 On motion of Director Schoonover, seconded by Director Fraites and unanimously carried,
21 the Board authorized the General Manager to execute the Assignment Agreement subject to
22 payment of District costs associated with processing this request and confirmation from legal
23 counsel that the assignee has legal capacity to execute the Assignment Agreement.

24 Mr. Victor Woo, Executive Vice President of The Bay Club Company, thanked the Board and
25 staff and stated that he was very excited to work with the District and expects great things for the
26 future.

27 Mr. Woo and Mr. Kooreny left the meeting.

28 **RESPONSE TO CALIFORNIA POOL & SPA ASSOCIATION**

29 Mr. DeGabriele advised the Board that the District received a request from the California Pool &
30 Spa Association (CPSA) to reconsider prohibitions on pool refilling imposed in the District's
31 Emergency Water Conservation Ordinances. He advised the Board that the Ordinances and the
32 District's Water Shortage Contingency Plan contain variance provisions which provide the General
33 Manager authority for customers to fill or re-fill pools as may be necessary. He stated that staff

1 recommends the Board to authorize the General Manager to send a response letter to CPSA
2 advising that no changes would be made to the District's Ordinance or requirements and that the
3 variance provision remains available for customers who are in need. Mr. DeGabriele informed the
4 Board that over this past summer the District has received 10 calls regarding filling a new pool or
5 refilling a pool that had maintenance. He noted that all of those customers were referred to the
6 Ordinance and Water Shortage Contingency Plan and it is unknown whether they ignored the plans
7 or followed them, but none of the customers applied for a variance from the General Manager.

8 On motion of Director Petterle, seconded by Director Schoonover and unanimously carried,
9 the Board authorized the General Manager to send the response letter to the CPSA.

10 **AUTHORIZATION TO AWARD CONTRACT FOR FIRE SERVICE TESTING**

11 Robert Clark reminded the Board about the request for proposals sent out in August for the
12 fire service testing. He stated that 14 contractors received bids and only two responded. He noted
13 that staff contacted that other contractors who didn't respond and asked why they did not want to bid
14 and some expressed the distance was a factor. Mr. Clark stated that the successful bidder was
15 Automatic Sprinkler Testing & Inspection Services, Inc. (ASTI). He stated that staff checked
16 references and received good feedback on the company's performance and reliability. Mr. Clark
17 advised the Board that he noticed in the FY14/15 budget development process, staff reduced the
18 hours allocated for the backflow program with the intent of including maintenance expenses for the
19 contracted fire service work. He stated that staff will be monitoring the Transition and Distribution
20 portion of the Maintenance budget and will provide augmentation requests if needed. Mr. Clark
21 stated that staff requests the Board award the contract to ASTI in the amount of \$24,745 for testing
22 and inspection services for 220 fire service backflow devices.

23 On motion of Director Frites, seconded by Director Baker and unanimously carried, the
24 Board authorized the General Manager to enter into an agreement with ASTI for testing and
25 inspection services for 220 fire service backflow devices.

26 **INFORMATION ITEMS**

27 **AEEP CONSTRUCTION MANAGEMENT REPORT NO. 1 (VALI COOPER & ASSOCIATES)**

28 Ken Sinclair, from Vali Cooper & Associates provided the Board with a construction
29 management report for the Aqueduct Energy Efficiency Project progress. Mr. Sinclair's presentation
30 covered pipeline installation from the south-end of San Antonio Road north to Kastania Pump
31 Station. He advised that the estimated percent complete by cost is 31% and 34% by time. Mr.
32 Sinclair stated that the boring operations under Highway 101 at Kastania Pump Station and north of
33 San Antonio Creek are completed as is the boring under San Antonio Creek, and that the job is

1 ahead of schedule. Mr. Sinclair had a number of photographs to share with the Board documenting
2 the work progress.

3 Drew McIntyre showed the Board a video how the contractor used a tunnel boring machine
4 underneath San Antonio Creek.

5 President Rodoni thanked Mr. Sinclair for his report.

6 **TECHNICAL ADVISORY COMMITTEE MEETING – SEPTEMBER 8, 2014**

7 Mr. DeGabriele provided the Board with a summary of the Technical Advisory Committee
8 Meeting held on September 8th. He informed the Board that the TAC has agreed to use the 10-year
9 average of gallons per capita per day water use ending in year 2006 as the baseline for the
10 Temporary Urgency Change Water Conservation Provisions measurement.

11 **MISCELLANEOUS**

12 The Board received the following miscellaneous information: Disbursements, FY14
13 Residential Consumption & Tier-Rate Status Report, STP Solar Power Facility – 2nd Year Status
14 Report, City of Napa Letter, and Letter from a Customer.

15 The Board received the following news article: Local cities outpace statewide average for
16 water savings.

17 The Board also received the following miscellaneous item at the meeting: Response Letter
18 and Article from California Pool & Spa Association and the following news article: Water-starved Eel
19 River goes to ground near Fortuna.

20 President Rodoni requested that for the monthly reports to make a note regarding the
21 Palace Market consumer water leak in West Marin. He stated that water production data with the
22 leak doesn't reflect the true water conservation efforts. Mr. DeGabriele stated that he would at a
23 minimum make a note of it.

24 **ADJOURNMENT**

25 President Rodoni adjourned the meeting at 8:27 p.m.

26 Submitted by

27

28

29

30

31

Katie Young
District Secretary

2

3

4

5

MEMORANDUM

To: Board of Directors
 From: David L. Bentley, Auditor-Controller
 Subj: Salary Schedule Revision
t:\acl\word\personnel\mou\board approve effective 100114.docx

October 3, 2014

RECOMMENDED ACTION: Approve

FINANCIAL IMPACT: 4.30% Salary Increase
2.37% (\$160,000) Labor Cost Increase

The San Francisco Bay Area All Urban Consumers Price Index (CPI-U) increased 2.96% over the twelve months ending August 31, 2014. In accordance with the Memorandum of Understanding with the North Marin Water District Employee Association (MOU), effective each October 1 through 2017, as approved by the Board on December 18, 2012, employees will receive a cost of living adjustment equal to the percentage change in the CPI-U, less 0.3%. In addition, effective each October 1 through 2016, employees will receive a 1.6% salary increase as an offset to the additional 1.6% employees will contribute toward the cost of CalPERS retirement benefits each October 1. Accordingly, the total salary increase effective October 1, 2014, calculates to 4.30%.¹

Title 2 of the California Code of Regulations, section 570.5, requires that the pay schedule of every CalPERS agency be approved and adopted by the agency's governing body pursuant to public meeting laws. The District's Salary Schedule, revised per the MOU, is attached for your review and approval.

Salaries for unrepresented employees, which include the Auditor-Controller, Chief Engineer, District Secretary, and Accounting/HR Supervisor, but excluding the General Manager, are also proposed to be increased consistent with the terms of the Employee Association MOU by the same 4.30% rate, consistent with the action of the Board on December 18, 2012, and said increases are incorporated in the attached salary schedule.

The 1.6% CalPERS retirement contribution shifted from the District to employees serves to offset the 4.30% salary increase, thereby rendering a total labor cost increase of 2.37%.² A salary increase projected at 4.6% was incorporated into the adopted budget, so no budget augmentation is required.

RECOMMENDATION:

Approve the updated District Salary Schedule to be effective October 1, 2014.

¹ SF Bay Area All Urban Consumers Index at 8/31/14 = 253.354; at 8/31/13 = 246.072. $253.354 / 246.072 = 2.96\%$.
 $(0.0296 - 0.003) \times 1.016 = 1.0430 - 1 = 4.30\%$.

² \$175,000 salary increase offset by a net \$15,000 decrease in benefit cost divided by \$6.74M labor cost = 2.37%.

Approved by GM CD

Date 10/3/2014

NORTH MARIN WATER DISTRICT

h:\excel\personnel\salary schedule\salary sched 15.xlsx\sal sched

Employee Monthly Salary Ranges and Job Classifications

Revised 9/18/2014

Effective October 1, 2014

JOB CLASSIFICATION	Beg	6 Mo	18 Mo	24 Mo	Merit
<u>ADMINISTRATION DEPARTMENT</u>					
Receptionist/Cashier	3,804	3,994	4,194	4,404	4,624
Account/Credit Clerk II	4,410	4,630	4,861	5,104	5,359
Accounting Clerk II	4,410	4,630	4,861	5,104	5,359
Field Service Representative	4,442	4,664	4,897	5,142	5,399
Consumer Services Supervisor	6,230	6,542	6,869	7,212	7,573
Senior Accountant	6,505	6,830	7,172	7,531	7,908
District Secretary	6,580	6,909	7,254	7,617	7,998
Accounting/HR Supervisor	7,691	8,076	8,480	8,904	9,349
Auditor-Controller	10,261	10,774	11,313	11,879	12,473
<u>CONSTRUCTION / MAINTENANCE DEPARTMENT</u>					
Laborer	3,732	3,919	4,115	4,321	4,537
Pipe Worker Assistant	4,243	4,455	4,678	4,912	5,158
Pipe Worker	4,915	5,161	5,419	5,690	5,975
Heavy Equipment Operator	5,002	5,252	5,515	5,791	6,081
Pipeline Foreman	5,850	6,143	6,450	6,772	7,111
Construction/Maintenance Superintendent	8,241	8,653	9,086	9,540	10,017
<u>ENGINEERING DEPARTMENT</u>					
Engineering Secretary	4,590	4,820	5,061	5,314	5,580
Engineering Services Rep	5,022	5,273	5,537	5,814	6,105
Engineering Technician III	5,343	5,610	5,890	6,185	6,494
Engineering Technician IV	5,977	6,276	6,590	6,920	7,266
Water Conservation Coordinator	7,550	7,928	8,324	8,740	9,177
Associate Civil Engineer	8,022	8,423	8,844	9,286	9,750
Chief Engineer	10,332	10,849	11,391	11,961	12,559

NORTH MARIN WATER DISTRICT

h:\excel\personnel\salary schedule\salary sched 15.xlsx\sal sched

Employee Monthly Salary Ranges and Job Classifications

Revised 9/18/2014

Effective October 1, 2014


JOB CLASSIFICATION	Beg	6 Mo	18 Mo	24 Mo	Merit
<u>OPERATIONS / MAINTENANCE DEPARTMENT</u>					
Building & Grounds Maintenance Tech I	4,323	4,539	4,766	5,004	5,254
Cross Connection Control Tech I	4,323	4,539	4,766	5,004	5,254
Assistant Water Distrib & TP Operator	4,507	4,732	4,969	5,217	5,478
Auto/Equipment Mechanic	4,915	5,161	5,419	5,690	5,975
Technical Assistant II	5,090	5,344	5,611	5,892	6,187
Chemist I	5,116	5,372	5,641	5,923	6,219
Electrical/Mechanical Technician	5,400	5,670	5,953	6,251	6,564
Treatment Plant Operator	5,607	5,887	6,181	6,490	6,815
Water Distrib & TP Operator	5,607	5,887	6,181	6,490	6,815
Sr. Electrical/Mechanical Tech	5,850	6,143	6,450	6,772	7,111
Senior Treatment Plant Operator	6,029	6,330	6,647	6,979	7,328
Sr. Water Distrib & TP Operator	6,029	6,330	6,647	6,979	7,328
Chemist II	6,242	6,554	6,882	7,226	7,587
Senior Chemist	6,866	7,209	7,569	7,947	8,344
Maintenance Supervisor	6,959	7,307	7,672	8,056	8,459
Distrib & Treatment Plant Supervisor	7,550	7,928	8,324	8,740	9,177
Water Quality Supervisor	7,806	8,196	8,606	9,036	9,488
Operations/Maintenance Superintendent	8,949	9,396	9,866	10,359	10,877

6

MEMORANDUM

To: Board of Directors

October 3, 2014

From: Chris DeGabriele, General Manager Subj: Approval for Out-of-State Travel to Attend Water Smart Innovations 2014 Conference
L:\gm\bod misc 2014\out of state travel smswp.docx**RECOMMENDED ACTION:** Approve Out-of-State Travel for the General Manager to attend the Water Smart Innovations 2014 Conference**FINANCIAL IMPACT:** \$1,000 (included in FY15 budget)

The Water Smart Innovations 2014 Conference will be held in Las Vegas, NV on October 8-10, 2014. The event is a national water conservation conference and the EPA WaterSense Awards are typically distributed at this event. In 2013, the Sonoma-Marín Saving Water Partnership received an EPA WaterSense Partner Award for the Qualified Water Efficient Landscape program. This year Sonoma-Marín Saving Water Partnership will again be eligible for an EPA Water Sense Award. I have been requested to attend the conference on behalf of the Sonoma-Marín Saving Water Partnership. The cost to the District is expected to be approximately \$1,000, including registration, hotel, travel, etc.

RECOMMENDATION:

Approve Out-of-State travel for the General Manager to attend the Water Smart Innovations 2014 Conference.

Approved by GM Date 10/3/2014

7

MEMORANDUM

To: Board of Directors

October 3, 2014

From: David L. Bentley, Auditor-Controller

Subj: Approve – Renewal of Grazing Leases – Grossi & Leveroni

t:\acl\word\memot15\grazing agreement renewal 110114.docx

RECOMMENDED ACTION: Approve**FINANCIAL IMPACT:** \$3,629 in Annual Grazing Lease Revenue

The two attached grazing leases renew existing agreements for a two year period commencing November 1, 2014. The only changes to the agreements are the annual rent amount and the dates. The agreements with Grossi and Leveroni originated in 1959. The annual rent amount is determined by reference to the wholesale value of cattle. The value of grazing land in the Bay Area increased 30% compared to 2012 when these agreements were last renewed. The ongoing drought, which has shriveled crops and pushed up the cost of feed, has resulted in a downsizing of herds and a corresponding increase in beef prices.

George Grossi leases two parcels totaling 119 acres. The single parcel leased by the Leveroni brothers is 27 acres. See attached map.

Since 1978 the District has calculated the value of its grazing property by tying it to the market value of the cattle the property can support. Rental rates are set as a function of the June selling price of choice feeder steers (500 – 800 lbs. class). June is used because it is the major period of selling. The June 2014 rate translates to a lease value of \$27.70 per Animal Unit Month. An AUM is the number of months of grazing a leased parcel will yield in a normal year for a cow with calf. For example, in consultation with Grossi, and based on the USDA "Soil Survey in Marin County", we have agreed that the 119 acres of land he leases can sustain 105 animal months of grazing per year. The calculation is then to multiply \$27.70 times 105 to arrive at the value of the leased property.

The District adopted the AUM method from the East Bay Regional Park District, which manages thousands of acres of grazing land. The AUM method is used by the Federal Bureau of Land Management, and hence is also used by the Point Reyes National Seashore. In 2012 the Marin County Open Space District entered into a five-year grazing agreement with West Marin Rancher Bill Barboni for use of Mount Burdell property at a rate of \$9.50/AUM. That agreement incorporates an obligation to perform significant fence repair work. MMWD does not lease lands for grazing.

RECOMMENDATION: Approve renewal of the grazing lease agreements with George Grossi (2 parcels totaling 119 acres) and David & Robert Leveroni (1 parcel totaling 27 acres).

Approved by GM LDDate 10/3/2014

Oct 01, 2014 - 2:12pm W:\JOB\MISC\Presentation\stafford grazing lease parcels with aerials.dwg User: ACANTILLER



LEGEND:



LEVERONI GRAZING LEASE



GROSSI GRAZING LEASE

NORTH MARIN WATER DISTRICT
NOVATO, CALIFORNIA

STAFFORD WATERSHED GRAZING LEASE PARCELS

FIGURE 1

DRAWING NO.

DRAFT

GRAZING AGREEMENT

THIS AGREEMENT, by and between NORTH MARIN WATER DISTRICT, a public corporation, hereinafter referred to as "Lessor," and GEORGE GROSSI & SON DAIRY, hereinafter referred to as "Lessee."

WITNESSETH:

WHEREAS, Lessor is the owner of various parcels of land in the vicinity of Stafford Lake shown on the attached map which is made part hereof and described as follows:

Parcel No. 2 (portion of AP 125-090-07): Approximately eighty-eight (88) acres of land lying easterly of Stafford Lake and south of Lessor's treatment plant, which land borders but does not include the lands leased by Indian Valley Golf Club, Inc.;

Parcel No. 3 (portion of AP 121-110-34): Approximately thirty-one (31) acres of land lying north of Vineyard Road between the northeast corner of the horse ranch and the point where Vineyard Road exits the watershed;

WHEREAS, the parties desire to enter into a grazing agreement concerning said property,

NOW, THEREFORE, IT IS MUTUALLY AGREED AS FOLLOWS:

- 1. GRAZING PERIOD.** In consideration of the payment of the rent hereinafter specified and except as provided in paragraph 9 hereof, Lessee shall have the exclusive grazing rights of the said property for the period commencing November 1, 2014, through October 31, 2016, to graze cattle. Lessee agrees, however, not to graze any animals on the described property during the period between November 15 or first heavy rainfall as determined solely by the Lessor, whichever shall first occur, and the following April 1 or such earlier or later date as determined and authorized by the Lessor in the event of a dry or wet spring.
- 2. ANIMAL UNIT MONTHS.** In normal rainfall years and following good range management practices to maintain a healthy stand of grass, avoiding overgrazing which could result in unsightly soil erosion, or other practices which may adversely impact lake water quality, the parties agree Parcels No. 2 and No. 3 can sustain approximately 105 animal months of grazing per year. An animal month of grazing is based on the amount of food required by a 1,000-pound cow.
- 3. RENT.** Lessee shall pay in advance on the 1st day of February of each year rent for Parcels No. 2 and No. 3 in accordance with the following formula:

$$\text{Annual Rent} = \text{animal months of grazing} \times \$27.70 \text{ per animal month}$$

$$\text{Annual Rent} = 105 \times \$27.70 = \$2,909.00$$

Under conditions such as insufficient rainfall that would result in poor grass yield or range management practices on the part of Lessee which would result in overgrazing, at the sole discretion of Lessor, the animal months of grazing may be decreased and Lessee will be reimbursed for such decrease at the rate of \$27.70 per animal month.

4. **RANGE MANAGEMENT.** The Lessee agrees to follow good range management practices to maintain a healthy stand of grass, avoiding overgrazing which could result in soil erosion or other practices which may adversely impact lake water quality. The parties shall mutually agree on activities to be conducted and any decrease in actual animal unit months resulting from these activities will be reimbursed to the Lessee. Lessee agrees to maintain a log of animal use on each parcel using forms provided by the Lessor and provide this information on a quarterly basis.
5. **FENCE MAINTENANCE.** Lessee agrees to maintain, at his own cost and expense, all existing fences surrounding all leased parcels and any new fencing installed at lessor's expense that may be constructed to better manage the grazing and/or protect the District watershed lands.
6. **EARLY TERMINATION.** Lessor reserves the right to terminate this agreement at any time during the term thereof upon thirty (30) days written notice to Lessee. Upon the effective date of such termination Lessor shall return on a prorata basis all prepaid rent.
7. **GRAZING ONLY, NO HORSES.** Lessee agrees that his use of the above-described real property shall be limited solely to grazing of cattle and that Lessee will not graze horses on the property.
8. **RESPONSIBILITY FOR DAMAGE.** Lessor shall not be liable for any damage to any person or property occurring on the demised premises from any cause whatever. Lessee shall hold the Lessor harmless from any such liability or claim of liability. Should it become necessary for the District to defend itself against any claims asserted, Lessee will reimburse Lessor for reasonable attorney's fees and all other costs thus incurred.
9. **PUBLIC ACCESS.** Lessee agrees to permit public access through the property through which Marin County Open Space has maintained trails, provided self closing type gates satisfactory to the Lessee are installed and maintained by the County of Marin Open Space District and provided further, notwithstanding the provisions of paragraph 8 hereof, that Lessee shall in no way be held liable by Lessor for any damage to any person or property occurring on the demised premises by hikers, horses or horse riders utilizing said public trail. In such event the parties shall mutually agree on fencing requirements, if any.
10. **POSSESSORY INTEREST.** Lessee acknowledges that he has been informed that under Section 107 of the Revenue and Taxation Code of the State of California the Marin County Assessor is required to place a value on all possessory interest. Possessory interest is defined as the right of a private taxable person or entity to use property owned by a tax-exempt agency for private purposes. A possessory interest will, therefore, be levied by the County Assessor on the leased premises against the Lessee as of the lien date, which is March 1 of each year. Any possessory interest tax so levied shall be paid by Lessee.
11. **INSURANCE.** Lessee shall procure and maintain for the duration of this agreement insurance against claims for injuries to persons or damage to property that may arise from or in connection with the grazing of animals by Lessee, its agents, representatives, employees or subcontractors. Coverage shall be at least as broad as: Farmers Comprehensive Personal Liability Insurance in an amount not less than one million dollars (\$1,000,000.00) combined single limit per occurrence for bodily injury, personal injury and property damage; and Workers' Compensation Insurance in the amount required by the labor code of the State of California. The liability policy is to contain, or be endorsed to contain, the following provisions:

- a) The District, its officials, employees and volunteers are to be covered as insured as respects liability arising out of activities performed by or on behalf of Lessee.
- b) Lessee's insurance coverage shall be primary as respects the District, its officials, employees and volunteers. Any insurance or self-insurance maintained by the District, its officials, employees or volunteers shall be excess of Lessee's insurance and shall not contribute with it.
- c) Coverage shall state that Lessee's insurance shall apply separately to each insured against whom claim is made or suit is brought, except with respect to the limit of the insurer's liability.
- d) The Insurer shall not cancel the insured's coverage without first providing thirty (30) days prior written notice by certified mail to the District.

Lessee shall furnish the Lessor with certificates of insurance and with an original endorsement affecting coverage required under this agreement. The certificates and endorsements for each policy are to be signed by a person authorized by that insurer to bind coverage on its behalf. The certificates and endorsements are to be received and approved by the Lessor before grazing commences.

IN WITNESS WHEREOF, the parties have executed this agreement on the dates shown below.

ATTEST:

NORTH MARIN WATER DISTRICT

Secretary

Dennis Rodoni, President Date

(SEAL)

GEORGE GROSSI & SON DAIRY

George Grossi, Jr. Date

DRAFT

GRAZING AGREEMENT

THIS AGREEMENT, by and between NORTH MARIN WATER DISTRICT, a public corporation, hereinafter referred to as "Lessor," and DAVID LEVERONI, III and ROBERT LEVERONI, hereinafter referred to as "Lessee."

WITNESSETH:

WHEREAS, Lessor is the owner of various parcels of land in the vicinity of Stafford Lake shown on the attached map which is made part hereof and described as follows:

Parcel No. 4 (portion of AP 125-090-25):

Approximately twenty-seven (27) acres of land comprising the easterly portion of the forty-three acre parcel owned by the Lessor north of Novato Boulevard; and

WHEREAS, the parties desire to enter into a grazing agreement concerning said property,

NOW, THEREFORE, IT IS MUTUALLY AGREED AS FOLLOWS:

1. **GRAZING PERIOD.** In consideration of the payment of the rent hereinafter specified, Lessee shall have the exclusive grazing rights of the said property for the period commencing November 1, 2014 through October 31, 2016, to graze cattle. Lessee agrees, however, not to graze any animals on the described property during the period between November 15 or first heavy rainfall as determined solely by the Lessor, whichever shall first occur, and the following April 1 or such earlier or later date as determined and authorized by the Lessor in the event of a dry or wet spring.
2. **ANIMAL UNIT MONTHS.** In normal rainfall years and following good range management practices to maintain a healthy stand of grass thus avoiding overgrazing which could result in soil erosion, or other practices which may adversely impact lake water quality, the parties agree that Parcel No. 4 can sustain approximately 26 animal months of grazing per year. An animal month of grazing is based on the amount of food required by a 1,000-pound cow.
3. **RENT.** Lessee shall pay in advance on the first day of February of each year rent for Parcel No. 4 in accordance with the following formula:

$$\begin{aligned} \text{Annual Rent} &= \text{animal months of grazing} \times \$27.70 \text{ per animal month} \\ \text{Annual Rent} &= 26 \times \$27.70 = \$720.00 \end{aligned}$$

Under conditions such as insufficient rainfall that would result in poor grass yield or range management practices on the part of Lessee which would result in overgrazing, at the sole discretion of Lessor, the animal months of grazing may be decreased and Lessee will be reimbursed for such decrease at the rate of \$27.70 per animal month.

4. **RANGE MANAGEMENT.** The Lessee agrees to follow good range management practices to maintain a healthy stand of grass, avoiding overgrazing which could result in soil erosion or other practices which may adversely impact lake water quality. The parties shall mutually agree on activities to be conducted and any decrease in actual animal unit months resulting from these activities will be reimbursed to the Lessee. Lessee agrees to maintain a log of animal use on each parcel using forms provided by the Lessor and provide this information on a quarterly basis.
5. **FENCE MAINTENANCE** Lessee agrees to maintain, at his own cost and expense, all fences surrounding all leased parcels.
6. **EARLY TERMINATION** Lessor reserves the right to terminate this agreement at any time during the term thereof upon thirty (30) days written notice to Lessee. Upon the effective date of such termination Lessor shall return on a prorata basis all prepaid rent.
7. **GRAZING ONLY, NO HORSES.** Lessee agrees that his use of the above-described real property shall be limited solely to grazing of cattle and that Lessee will not graze horses on the property.
8. **RESPONSIBILITY FOR DAMAGE.** Lessor shall not be liable for any damage to any person or property occurring on the demised premises from any cause whatever. Lessee shall hold the Lessor harmless from any such liability or claim of liability. Should it become necessary for the District to defend itself against any claims asserted, Lessee will reimburse Lessor for reasonable attorney's fees and all other costs thus incurred. Neither party shall be held liable by the other for any damage to persons or property caused by third parties trespassing on the demised property.
9. **POSSESSORY INTEREST.** Lessee acknowledges that he has been informed that under Section 107 of the Revenue and Taxation Code of the State of California the Marin County Assessor is required to place a value on all possessory interest. Possessory interest is defined as the right of a private taxable person or entity to use property owned by a tax-exempt agency for private purposes. A possessory interest will, therefore, be levied by the County Assessor on the leased premises against the Lessee as of the lien date, which is March 1 of each year. Any possessory interest tax so levied shall be paid by Lessee.
10. **INSURANCE.** Lessee shall procure and maintain for the duration of this agreement insurance against claims for injuries to persons or damage to property that may arise from or in connection with the grazing of animals by Lessee, its agents, representatives, employees or subcontractors. Coverage shall be at least as broad as: Farmers Comprehensive Personal Liability Insurance in an amount not less than one million dollars (\$1,000,000.00) combined single limit per occurrence for bodily injury, personal injury and property damage; and Workers' Compensation Insurance in the amount required by the labor code of the State of California. The liability policy is to contain, or be endorsed to contain, the following provisions:
 - a) The District, its officials, employees and volunteers are to be covered as insured as respects liability arising out of activities performed by or on behalf of Lessee.

b) Lessee's insurance coverage shall be primary as respects the District, its officials, employees and volunteers. Any insurance or self-insurance maintained by the District, its officials, employees or volunteers shall be excess of Lessee's insurance and shall not contribute with it.

c) Coverage shall state that Lessee's insurance shall apply separately to each insured against whom claim is made or suit is brought, except with respect to the limit of the insurer's liability.

d) The Insurer shall not cancel the insured's coverage without first providing thirty (30) days prior written notice by certified mail to the District.

Lessee shall furnish the Lessor with certificates of insurance and with an original endorsement affecting coverage required under this agreement. The certificates and endorsements for each policy are to be signed by a person authorized by that insurer to bind coverage on its behalf. The certificates and endorsements are to be received and approved by the Lessor before grazing commences.

IN WITNESS WHEREOF, the parties have executed this agreement on the date shown below.

ATTEST:

NORTH MARIN WATER DISTRICT

Secretary

Dennis Rodoni, President Date

Robert Leveroni Date

David Leveroni, III Date

8

MEMORANDUM

To: Board of Directors

October 3, 2014

From: Drew McIntyre, Chief Engineer



Subject: Amendment to Water Service Agreement – Shell Gas Station – 2085 Novato Blvd, Novato, CA (APN: 132-183-12)

r:\olders by job no\2700 jobs\2776\2776 bod memo-amendment 10-3-14.doc

RECOMMENDED ACTION: The Board approve authorization of this amended agreement.**FINANCIAL IMPACT:** None (Developer funded)

The Shell Gas Station – 2085 Novato Blvd project consists of demolition of the existing convenience store at the Gas Station and construction of a new enlarged 2,520 sq. ft. convenience store with a 700 sq. ft. upstairs office in a slightly different building foot print (see map in Attachment A). The Board approved the water service agreement to install a 6-inch fire service, a commercial fire hydrant, a 1.5-inch domestic water service and a 1-inch irrigation water service for the above project on May 6, 2014. The existing service was to be killed. The applicant recently made a request to the Fire Marshall to eliminate the previously approved new hydrant since there is an existing hydrant in close proximity to the project. The Fire Marshall has approved this request. The applicant also requests: (1) that the existing service continue to be used for irrigation and (2) the new domestic service be downsized to a 1-inch. Staff concurs with these requests however NMWD will still install a 2-inch lateral as originally planned for the downsized domestic service. The 1-inch meter meets the typical flows and is expected to provide the recommended maximum continuous flow when all fixtures are used at the same time (at maximum demand). New reduced pressure backflow preventer assemblies (RPPs) will be installed on each service.

The amended agreement will include installation of 10 feet of 6-inch steel main, a 6-inch fire service with 5/8-inch bypass meter and one 1-inch domestic service. There is no change to water use with the amendment. As a result of these changes Initial Charges and Estimated Installation Costs have decreased by \$16,491.

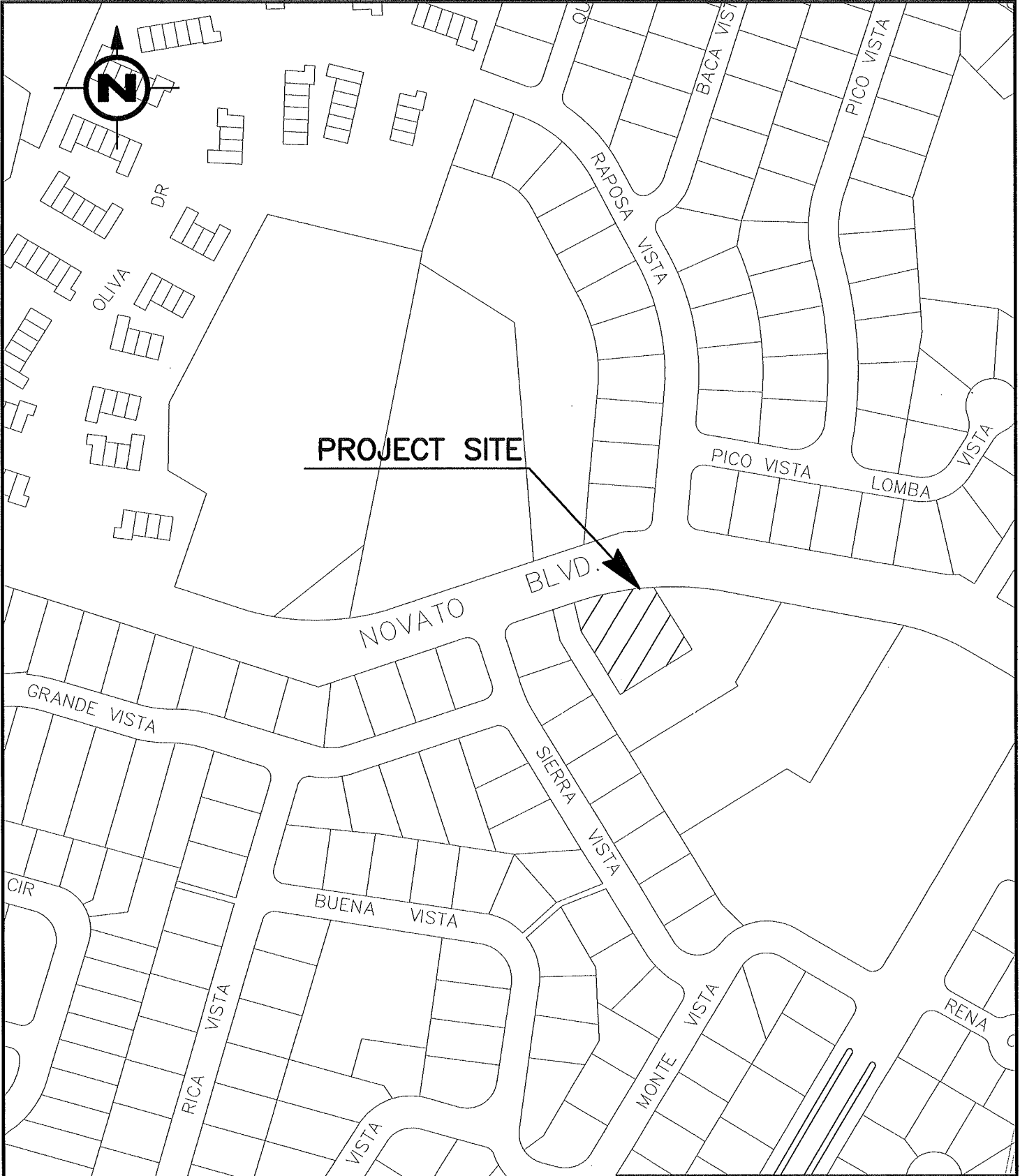
RECOMMENDATION:

That the Board approve authorization of this amended agreement.

Approved by GM

Date:

Apr. 29, 2014 - 12:10pm R:\Megan\2085 NOVATO BLVD.SHELL GAS STATION VICINITY MAP J--2776--001.dwg User: MMCDONOUGH



2085 NOVATO BLVD. SHELL GAS STATION
APN: 132-183-12

DATE	SCALE	JOB.NO.	DWG.NO.
4/29/14	NTS	2776	MAP

RESOLUTION NO. 14-
AUTHORIZATION OF EXECUTION
OF
AMENDMENT NO. 1 TO
WATER SERVICE FACILITIES CONSTRUCTION AGREEMENT
WITH
AU ENERGY, LLC

BE IT RESOLVED by the Board of Directors of NORTH MARIN WATER DISTRICT that the President and Secretary of this District be and they hereby are authorized and directed for and on behalf of this District to execute that certain Amendment to Part One Water Service Facilities Construction Agreement between this District and AU ENERGY, LLC, a Limited Liability Corporation, providing for the installation of water distribution facilities to provide domestic water service to that certain real property known as SHELL GAS STATION-2085 NOVATO BLVD., Marin County Assessor's Parcel Number 132-183-12, NOVATO, CALIFORNIA.

* * *

I hereby certify that the foregoing is a true and complete copy of a resolution duly and regularly adopted by the Board of Directors of NORTH MARIN WATER DISTRICT at a regular meeting of said Board held on the 7th day of October, 2014, by the following vote:

AYES:

NOES:

ABSENT:

ABSTAINED:

(SEAL)

Katie Young, Secretary
North Marin Water District

AMENDMENT NO. 1
TO
PART ONE
WATER SERVICE FACILITIES CONSTRUCTION AGREEMENT
FOR
SHELL GAS STATION- 2085 NOVATO BLVD.

THAT CERTAIN "Part Water Service Facilities Construction Agreement for SHELL GAS STATION- 2085 NOVATO BLVD.," dated May 12, 2014, by and between NORTH MARIN WATER DISTRICT, herein called "District," and AU ENERGY, LLC., a Limited Liability Corporation, herein called "Applicant," is hereby amended as follows:

Section 4 as set forth on Page 1-2 and Section 5 as set forth on Page 1-3 of Part One shall be revised and shall read as set forth on replacement Pages 1-2A, 1-3A, attached hereto and made a part hereof.

IN WITNESS WHEREOF, the parties hereto have executed this amendment to their agreement on the _____ day of _____, 2014.

NORTH MARIN WATER DISTRICT
"District"

ATTEST:

Dennis Rodoni, President

Katie Young, Secretary

(SEAL)

AU ENERGY, LLC
a Limited Liability Corporation
"Applicant"

Naresh K. Goyal, Managing Member

NOTES: *This amendment must be executed by the Applicant and delivered to the District within thirty (30) days after it is authorized by the District's Board of Directors.*

ALL SIGNATURES MUST BE ACKNOWLEDGED BEFORE A NOTARY PUBLIC.

acceptance of the completed water facilities, the District shall provide water service to said real property and project in accordance with its regulations from time to time in effect.

2. Prior to the District issuing written certification to the City, County or State that financial arrangements have been made for construction of the required water facilities, the Applicant shall complete such arrangements with the District in accordance with Section 5 of this agreement.

3. Prior to release or delivery of any materials by the District or scheduling of either construction inspection or installation of the facilities by the District, the Applicant shall:

a. deliver to the District vellum or mylar prints of any revised utility plans approved by the City or County to enable the District to determine if any revisions to the final water facilities construction drawings are required. The proposed facilities to be installed are shown on Drawing No. 1 2776, entitled, "SHELL GAS STATION-2085 NOVATO BLVD", a copy of which is attached, marked Exhibit "A", and made a part hereof. (For purposes of recording, Exhibit "A" is not attached but is on file in the office of the District.)

b. grant or cause to be granted to the District without cost and in form satisfactory to the District all easements and rights of way shown on Exhibit "A" or otherwise required by the District for the facilities.

c. deliver to the District a written construction schedule to provide for timely withdrawal of guaranteed funds for ordering of materials to be furnished by the District and scheduling of either construction inspection or construction pursuant to Section 5 hereof.

4. Except for fire service, new water service shall be limited to the number and size of services for which Initial Charges are paid pursuant to this agreement. Initial Charges for new services, estimated District costs and estimated applicant installation costs are as follows:

Initial Charges

Meter Charges (New Domestic) (Included in Estimated District Costs)One 1-inch @	\$ 0.00	\$ 0.00
Meter Charges (Existing Irrigation)One 1-inch @	\$ 0.00	\$ 0.00
Meter Charges (Fire Service) (Included in Estimated District Costs)One 5/8-inch @	\$ 0.00	\$ 0.00
Reimbursement Fund Charges (Domestic).....One 1-inch @	\$ 1,055.00	\$ 1,055.00
	@		
Reimbursement Fund Charges (Irrigation).....One 1-inch @	\$ 1,055.00	\$ 1,055.00
Facilities Reserve Charges (3 EUs Domestic, 1 EDU Irrigation)Four @	\$28,600.00	\$114,400.00
Credit for Existing Service To Remain (1 EDU + Reimb.) @	\$<29,655.00>	\$<29,655.00>

Subtotal - Initial Charges..... \$ 86,855.00

Estimated District Costs

Pipe, Fittings & Appurtenances.....	\$ 10,924.00
District Construction Labor.....	\$ 15,208.00

Bulk Materials.....	\$ 1,746.00
Subtotal –Estimated District Costs.....	\$ 30,385.00
TOTAL ESTIMATED WATER FACILITIES COSTS.....	\$117,240.00

(Bulk materials are such items as crushed rock, imported backfill, concrete, reinforcing steel, paving materials, and the like, which are to be furnished by the contractor performing the work.)

5. Financial Arrangements to be made by the Applicant shall consist of the following:

Initial Charges and Estimated District Cost

The Applicant shall either pay to the District or provide a two (2) year irrevocable letter of credit in form satisfactory to the District and payable at sight at a financial institution in the Novato area the sum of Initial Charges and Estimated District Costs as set forth in Section 4 hereof in the amount of **\$ 117,240**. If the Applicant provides the two (2) year irrevocable letter of credit, the District shall immediately draw down Initial Charges and shall draw upon the remaining funds guaranteed by the letter at any time the District deems appropriate to recover the Estimated District Costs which normally will be at least thirty (30) days prior to the anticipated start of construction for the ordering of materials to be furnished by the District.

Estimated Installation Costs

Installation By District: Due to the proprietary nature of construction required to install said facilities, the District reserves the right to install the facilities utilizing District construction forces. The Applicant shall either pay to the District the total Estimated Installation Costs set forth in Section 4 hereof in the amount of **\$117,240** or shall include such amount in the irrevocable letter of credit provided for the Initial Charges and Estimated District Costs set forth first above. The District shall draw upon installation funds guaranteed by the letter at any time the District deems appropriate which normally will be at least thirty (30) days prior to the anticipated start of construction.

Whenever an irrevocable letter of credit is required by this agreement, the Applicant may substitute a certificate of deposit at a financial institution in the Novato area provided the certificate may be cashed at sight by the District at any time.

6. The applicant shall not resell any water furnished pursuant to this agreement. If multiple services from a single connection to the District’s system through a master meter are allowed pursuant to District Regulation 4(b) the Applicant shall not submeter the individual services. The District’s bills for water measured by a master meter shall be paid by the Applicant or a responsible homeowner’s association. If a rental unit served through a master meter is converted into a separately owned unit

9

MEMORANDUM

To: Board of Directors
From: Dianne Landeros, Accounting/HR Supervisor 
Subj: Approve - Commuter Benefits Program
t:\finance\memos\bod commuter benefits program.docx

October 3, 2014

RECOMMENDED ACTION: Approve Allowing Employees to Exclude Transit Fare from Taxable Income

FINANCIAL IMPACT: District Savings of up to \$120 annually per employee enrolled

State law requires that employers adopt a Commuter Benefits Program and make it available to employees effective October 1, 2014. The Commuter Choice Tax Benefit Program is permitted under the federal Internal Revenue Code, section 132(f) Qualified Transportation Fringe. Under this tax provision, employees' monthly expenses for commuting by transit (up to \$130) can be paid for on a tax-free basis. This means an employee may avoid taxes on up to \$1,560 a year, a savings of \$500 or more depending on their tax situation. The District saves on payroll taxes (Social Security and Medicare) on the amount of the benefit yielding savings of up to \$120 per employee per year.

The Commuter Benefits Program is mandatory for employers in the Bay Area with 50 or more full-time employees (per Senate Bill 1339, in California Government Code section 65081). Employers must register with 511.org and choose one of four options:

1. Pre-Tax Benefit – allows employees to exclude transit fare from taxable income (up to \$130/month).
2. Employer Provides Subsidy – to cover or reduce the employees' transit fare, to a maximum of \$75/month.
3. Employer provides transportation for employees in bus, shuttle or van.
4. Alternative Commuter Benefit – employer provides an alternative commuter benefit that would be equally effective in reducing single-occupant commute trips and/or vehicle emissions. Employer chooses from a menu of options.

Option 1 is the most economical of the four options and easiest to administer. Currently there are three employees commuting via public transit. Employees desiring to enroll will submit an order form to Payroll indicating the monthly amount of their transit fare; that amount will be deducted from their paycheck on pre-tax basis and added to their Clipper Card (the transit pass used by Golden Gate Transit and, hopefully, by the Smart Train).

RECOMMENDATION

Approve Option 1 – allows employees to exclude transit fare from taxable income up to \$130/month.

10

MEMORANDUM

TO: Board of Directors October 3, 2014
 FROM: Drew McIntyre, Chief Engineer 
 SUBJ: Approve Contract: Third Party Labor Compliance Inspection for Atherton Tank
 Rehabilitation Project – Contractor Compliance & Monitoring, Inc.
R:\Folders by Job No\6000 jobs\6201.21\BOD memos\6201.21 tank labor compliance inspection BOD MEMO 10-7-2014.doc

RECOMMENDED ACTION: Authorize the General Manager to execute an agreement with Contractor Compliance & Monitoring, Inc.

FINANCIAL IMPACT: \$19,500 plus \$2,000 contingency (included in FY15 CIP Budget)

BACKGROUND:

The Atherton Tank Rehabilitation contract award to Blastco, Inc. (Blastco) was authorized by the Board, at the August 19, 2014 meeting. The project involves structural rehabilitation and re-coating of the aforementioned tank. The Board also approved a third party coating inspection contract to DB Gaya Consulting, LLC at the same meeting. The "Notice to Proceed" was issued to Blastco with the effective start date of September 12, 2014 and project completion date of June 9, 2015. The contractor, Blastco, plans to mobilize in the week of October 6, 2014.

After the above rehabilitation project bid opening, a bid protest against award of the contract to low bidder was raised by the second low bidder. The protest was indirectly related to labor compliance claims against Blastco. District legal counsel, Mr. Carl Nelson, reviewed and confirmed that Blastco bid was responsive. However, since questions related to labor compliance issues have been raised, staff recommends procuring services of a third party labor compliance monitoring firm for this project.

The District solicited Request for Proposals (RFP) from two firms experienced with labor compliance monitoring, RGM and Associates (RGM) and Contractor Compliance & Monitoring, Inc. (CCMI). Both firms submitted proposals; RGM proposal for a not to exceed fee of \$22,219 on time and material basis versus CCMI's proposal of \$19,500. The two proposals are attached (Attachment 1).

Staff recommends awarding the third party labor compliance inspection contract to Contractor Compliance & Monitoring, Inc.

RECOMMENDATION:

Board authorize the General Manager to execute an agreement with Contractor Compliance & Monitoring, Inc. for \$19,500 with a contingency of \$2,000.



CONTRACTOR COMPLIANCE & MONITORING, INC.

www.ccmi-tpa.com

635 MARINERS ISLAND BLVD, SUITE 200, SAN MATEO CA 94404 - P 650-522-4403 - F 650-522-4402

September 30, 2014

Carmela Chandrasekera, P.E.
North Marin Water District
999 Rush Creek Place
Novato, CA 94945

Re: Labor Compliance Services for Atherton Tank Rehabilitation

Dear Ms. Chandrasekera,

Depending on the size and length and location of the project Contractor Compliance and Monitoring can perform Labor Compliance Program (LCP) services on either a flat fee or hourly basis. I would estimate a flat fee \$19,500 for the Atherton Tank Rehabilitation Project. A flat fee is divided over all months of the project and billed in equal monthly installments.

CCMI's hourly rates for staff range from \$85-\$100 an hour depending on the skill level and tasks performed. My time is billed at \$300 an hour. Required compliance includes onsite interviews of workers. A detail of our hourly rates are listed below:

Technician: \$85.00

Analyst \$95.00

Manager: \$100

Principal: \$300 (Wilder only)

Onsite interviews: \$200 (flat fee- monthly)

Our hourly rates are billed on a monthly basis with a NTE of 125% of our flat fee rate.

I have also attached a list of the Scope of Work for this project.

This letter will confirm that Contractor Compliance and Monitoring Inc. (CCMI) can comply with NMWD insurance requirements. Please let me know if you require anything further. We look forward to working with you

Sincerely,

Deborah Wilder

Scope of Work

Contractor Compliance and Monitoring, Inc. has been in operation since 2002 and an approved Third Party Administrator of LCPs since February 2003¹. We have represented or provided service to over 75 public agencies (school districts, water districts, colleges, the University of California, counties, cities and special districts throughout the state) and scores of contractors. CCMI's entire staff has significant expertise in the field of prevailing wage, certified payroll and apprenticeship requirements. Listed below are the services which CCMI proposes for the Atherton Tank Rehabilitation Project:

1. Provide LCP compliance under the requirements of the California Labor Code.
2. Review specifications and bid and contract documents (as requested) for compliance with prevailing wage language.
3. Conduct a Preconstruction Conference meeting and provide training and information on LCP requirements including providing handout materials for all contractors and subcontractors.
4. Provide a phone line and e-mail contact where contractors and subcontractors can contact CCMI for clarification on prevailing wage, certified payrolls, apprenticeship and compliance issues.
5. License check and confirmation with California Contractor's State License Board of current and active license status, as well as worker's compensation coverage of all contractors and all listed subcontractors.
6. Review and comparison of work classification with California prevailing wage classification to ensure the contractor is paying the correct prevailing wage rate.
7. Monitoring of all Apprenticeship Requirements. Collection and review of all DAS-140 and DAS-142 forms. Review of applicable apprenticeship ratios employed, correct wages paid, training contributions (CAC2 forms).
8. Monthly audit of certified payrolls forms. This includes obtaining the applicable prevailing wage determinations for each project. Certified Payrolls are generally delivered by the Contractor to CCMI for review and audit. Auditing the payrolls includes: checking proper trade classifications, checking for overtime, weekend, holiday or shift work, checking for ** increases, reviewing fringe benefit contribution and verifying that amortization is correct (when used) and review of training contributions made. When appropriate, travel and subsistence is also reviewed

¹ The California Department of Industrial Relations discontinued approving Third Party LCPs in 2011.

9. Monthly jobsite audits and random interviews of workers (to determine veracity of certified payroll information, compliance with anti-kickback, equal employment opportunity requirements, jobsite posting requirements, etc.). (optional)
10. Verification of posting on the projects on a regular basis.
11. Additional detailed audit and/or investigations of contractors through review of cancelled checks, time cards, and related records (as needed).
12. Monthly report to the CLIENT regarding compliance of contractors and subcontractors audited. To the extent that a contractor is either not in compliance and/or additional paperwork is needed for review, the CLIENT and the general contractor are contacted by CCMI.
13. Communication of potential violations to the CLIENT with recommended action. In the event that potential paperwork or compliance issues with a contractor cannot be resolved quickly, the CLIENT will be notified of this potential problem and a recommendation will be made to the CLIENT to retain a certain portion of the scheduled progress payment until the issue is resolved or other action will be discussed with the Agency always maintaining the authority whether to withhold funds or take other corrective action.
14. Communications with Contractors. CCMI will work with all contractors and subcontractors with the goal of amicable agreement on resolving issues related to violations, penalties and compliance. All meeting and calls with contractors will be documented in the project folder maintained by CCMI.
15. Third Party Requests for documents. A project with a high profile oftentimes draws the attention of certain local watchdog groups who frequently request copies of certified payrolls and related "Public Documents". CCMI will provide the appropriate redacted copies of certified payroll and related LCP documentation to any third party who makes an appropriate request.
16. Issuing of all final close of project reports, including imposition of penalties and reports to Labor Commissioner (Request for Forfeiture); issuing Notices to Withhold and other close out documentation.

RGM AND ASSOCIATES
PROPOSED FEE SCHEDULE

**NORTH MARIN WATER DISTRICT
LABOR COMPLIANCE PROGRAM**

STANDARD HOURLY RATE SCHEDULE

Effective January 1, 2014

	<u>Hourly Rates</u>
Labor Compliance Officer/Principal Oversight	\$118.00
Labor Compliance Manager	\$113.00
Field Specialist/Site Monitor	\$108.00
Prevailing Wage Specialist	\$ 77.00
Clerical Support	\$ 55.00
Reimbursables	COST

*Aforementioned rates include all taxes, insurance, health and employee benefits, overhead and profit.
Annual fee increases will be based on data provided by the Bureau of Labor Statistics, Consumer Price Index.*

ATHERTON TANK REHABILITATION PROJECT

Estimated Construction Duration – 9 Months

Estimated Closeout Duration – 1 Month

Startup

- | | |
|---|---------------------------------|
| • Prepare LCP information/Facilitate LCP portion of pre-con | 4.00 hrs x \$113.00 = \$ 452.00 |
| • Set up project spreadsheet files, project binders, etc. | 2.00 hrs x \$ 77.00 = \$ 154.00 |
| • Print, organize and post wage determinations and signage | 4.00 hrs x \$ 77.00 = \$ 308.00 |

Subtotal **\$ 914.00**

Labor Compliance Monitoring

- | | |
|--|------------------------------------|
| • Labor Compliance Officer – 0.25 hrs per month | 2.25 hrs x \$118.00 = \$ 265.50 |
| • Labor Compliance Manager – 0.50 hrs per week | 19.50 hrs x \$113.00 = \$ 2,203.50 |
| • On Site Monitor – 2.00 hrs per week | 78.00 hrs x \$108.00 = \$ 8,424.00 |
| • Prevailing Wage Specialist – 2.50 hrs per week | 97.50 hrs x \$ 77.00 = \$ 7,507.50 |
| • Clerical Support – 1.00 hrs per week | 39.00 hrs x \$ 55.00 = \$ 2,145.00 |

Subtotal **\$ 20,545.50**

Project Closeout

- | | |
|--|---------------------------------|
| • Collect final payroll records, resolve open wage matters | 4.00 hrs x \$ 77.00 = \$ 308.00 |
| • Audits and/or Reports | 4.00 hrs x \$113.00 = \$ 452.00 |

Subtotal **\$ 760.00**

Estimated Total Not-To-Exceed Fee* **\$ 22,219.50**

**Includes estimated time required for typical assessment of complaints and facilitation of audits; investigations involving extenuating circumstances or egregious violations are not generally included in the proposed fee. Should it occur, North Marin Water District will be notified of the circumstances and additional enforcement services will be provided on a time and materials basis at the hourly rates identified above.*

RGM AND ASSOCIATES
LCP SCOPE OF WORK

RGM LCP Scope of Services for North Marin Water District ("District")

- Furnish all necessary signage for posting at the job site as required by state and federal requirements.
- Prepare prevailing wage compliance materials and thoroughly review state and federal compliance requirements with contractors and subcontractors during pre-construction meeting.
- Conduct on-site interviews as required by the District's Labor Compliance Program and/or Davis-Bacon Related Acts standards. Prepare summary report.
- Compare Certified Payroll Reports (CPRs) received from the contractor(s) and subcontractor(s) to site interview reports provided by Site Monitor.
- Collect, review and audit CPRs for compliance with current prevailing wage rates and laws, including appropriate labor classifications and apprenticeship requirements. Following receipt of CPRs, each record from each contractor and subcontractor will be reviewed to verify wage compliance. Audits will be conducted whenever there are indications an underpayment or violation may have occurred.*
- Determine whether contractor(s) and subcontractor(s) have complied with the requirements of the California State Division of Apprenticeship Standards and/or the Federal Office of Apprenticeship Training, are duly licensed with the California State Contractors License Board, and have secured workers compensation coverage.
- Document any missing or inaccurate information and notify the Contractor in writing of any discrepancies with CPRs or other apparent violations of prevailing wage labor laws applicable to state and/or federal funded public works projects.
- Verify corrections and restitution of wage underpayments.
- Investigate apparent discrepancies if clarification/correction is not received from the Contractor within a timely manner and/or investigate all complaints or concerns submitted by workers or others.*
- When necessary, prepare Notice(s) of Temporary Withholding of Contract Payments Due to Delinquent or Inadequate Payroll Records, pursuant to Title 8 California Code of Regulations §16435.
- Upon completion of any investigation, if it is determined violations may have occurred, prepare the Request for Forfeiture and all evidences to be submitted to the Labor Commissioner or provide detailed information to the appropriate agency enforcing compliance with federal laws.
- In response to the Labor Commissioner's approval of forfeiture, submit to the Contractor, any affected subcontractor(s), and the Surety/Bonding Agent(s) a Notice of Withholding of Contract Payments.*
- On behalf of the District, facilitate all procedures related to request(s) for a Formal Hearing, Settlement Meeting, and/or Labor Code 1742 proceedings.
- Provide all documentation received from contractors and subcontractors, plus all on-site interview forms and other corroborating evidences, for review by entities or agencies that may elect to review such materials. When requested by the District, RGM's Labor Compliance Manager will participate and provide additional and/or clarifying information during audits or other review programs.

**Assessment of complaints, facilitation of audits, and/or investigations involving extenuating circumstances or egregious violations are not included in the general scope of work. Should it occur, the District will be notified of the situation and wage compliance services will be provided on a time and materials basis at RGM and Associates' standard hourly rates.*

11

MEMORANDUM

To: Board of Directors

Date: October 3, 2014

From: Drew McIntyre, Chief Engineer


 Subject: Approve CSW/ST² Contract Amendment
 Marin Sonoma Narrows/Aqueduct Energy Efficiency Project

R:\Folders by Job No\7000 jobs\7118\Consultants Folder\CSW7118 CSW Contract Amendment 5 for Aqueduct Upsizing BOD Memo10-3-14.docx

RECOMMENDED ACTION: Board authorize General Manager to execute a contract amendment with CSW/Stuber-Stroeh for additional design services related to the Aqueduct Energy Efficiency Project (AEEP).

FINANCIAL IMPACT: \$209,433 plus a \$25,000 Contingency (included in FY15 CIP Budget and ~\$155,000 reimbursed by Caltrans)

Background

The most recent overview of the Caltrans Marin Sonoma Narrows (MSN) and Aqueduct Energy Efficiency Projects (AEEP) was provided to the Board at the September 16, 2014 meeting as part of Vali Cooper's (NMWD's Construction Manager for Reach A-D) Construction Progress Report Update No. 1. Construction was substantially complete for the MSN B1 – AEEP Reach E project in March 2014 and a Notice to Proceed on the MSN B3-AEEP Reach A-D project was also issued in the same month (map included as Attachment 1).

CSW/ST² Consulting Services Contract

The Board approved Contract Amendment No. 4 with CSW/ST² for design work on the MSN/AEEP project at the April 15, 2014 meeting for \$132,048 in out of scope services. In the attached proposal (Attachment 2) CSW/ST² requests \$108,500 for work performed in previously authorized services and \$100,933 in new out of scope services. Accordingly, the total requested fee is \$209,433. Approximately 74% (i.e., \$155,384) of the total \$209,433 will be billed to Caltrans for reimbursement as shown in the tabulation provided in Attachment 3. The single largest line item request is another \$100,000 for Task 119 – Construction Administration Reach A-D. This task primarily covers submittal reviews and requests for information (RFIs) generated by the contractor. The current approved budget for Task 119 is \$70,000 and, if this amendment is approved, Task 119 will be increased to a total of \$170,000. It is apparent that this task was under budgeted at the onset given the fact that \$75,000 was required for CSW/ST² during the Reach E segment Construction Administration for the Reach E segment which only represents ~40% of the total pipeline length.

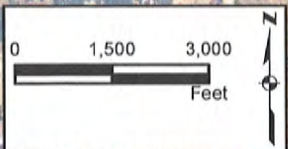
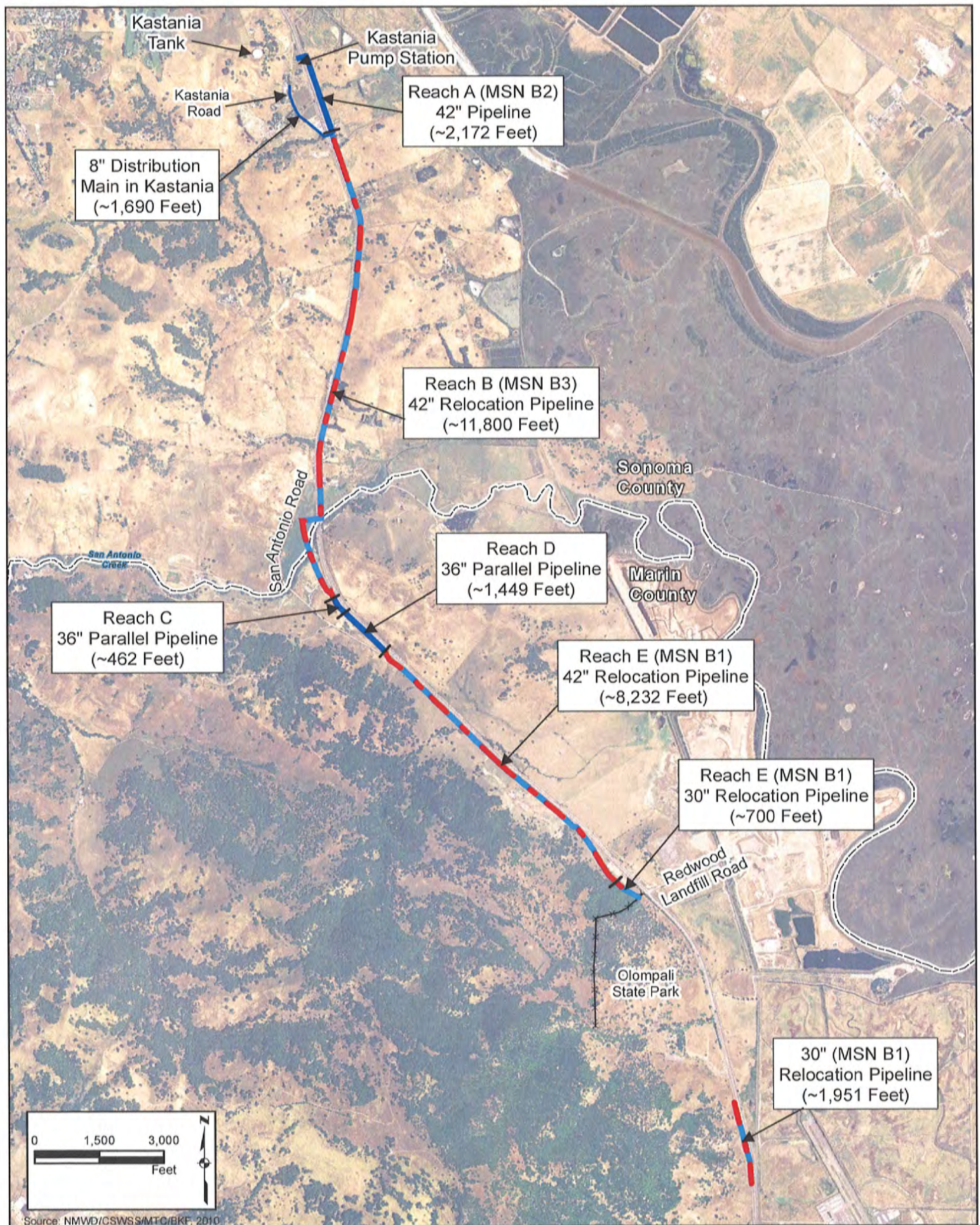
A summary of CSW/ST²'s contract modifications since initial approval in January 2011 is provided below. It is important to note that one significant factor in the CSW/ST²'s increase in

billings since May 2013 reflect the fact that all CalTrans responsible costs are now being passed through NMWD as part of the NMWD-Caltrans Utility Agreement. Prior to May 2013 Caltrans paid CSW/ST² under a separate contract.

<i>Amendment No.</i>	<i>Date</i>	<i>Description</i>	<i>Fee Amount</i>	<i>Cumulative Total</i>	<i>Approved Contingency Balance</i>
	January 2011	Award Consulting Services Agreement for Reach A-E betterment design	\$236,540	\$236,540	\$24,000
1	August 2011	Additional environmental services for AEE Project	\$17,160	\$253,700	\$6,840
2	May 2013	Additional design phase support services for AEE Project	\$80,600	\$334,300	
3	November 2013	Bid phase and construction phase design support services for MSN and AEE Projects	\$121,200	\$455,500	
4	April 2014	Additional design support services for MSN and AEE Projects	\$132,048	\$587,548	
5	Oct 2014	Additional construction phase design support services for MSN and Aqueduct Energy Efficiency Project	\$209,433	\$796,981	

RECOMMENDATION

Authorize the General Manager to execute a contract amendment with CSW/Stuber-Stroeh in the amount of \$209,433 plus a contingency of \$25,000 for additional design engineering services related to the MSN and Aqueduct Energy Efficiency Projects.



Source: NMWD/CSWSS/MTC/BKF, 2010

Legend

- Relocation Pipeline
- Distribution Pipeline
- Parallel Pipeline
- ×××× Olompali State Park Property Line

Project Location

North Marin Water District
 Aqueduct Energy
 Efficiency Project

Date: September 16, 2014
Rev.: October 1, 2014
File: 4.1131.02

Drew McIntyre
North Marin Water District
P.O. Box 146
Novato, CA 94948

Via email: drewm@nmwd.com

RE: ADDITIONAL SERVICES FOR THE AEEP PROJECT (ADDENDUM #5)

Dear Drew:

Since the District increased our contract through Amendment No.4 we have continued to encounter changes in items including those of schedule which Caltrans represented differently. As a result, we have incurred additional costs beyond those anticipated by the amended contract. The following details the changes which we have assisted the District in complying with the requests from Caltrans and the contractor. The scope and estimated fees follow the task numbers and refer to the numbers which we have used to track the changes:

PREVIOUSLY BUDGETED TASKS

- A. 106 - ENVIRONMENTAL REVIEW COORDINATION WITH CT: This includes work analyzing and working with CH2M to field the ramifications of the oil/gas plume from the Kastania Gas and Shop facility at the south end of Kastania road.

Additional \$3,500 requested to bring budget in line with effort.

- B. 119 - CONSTRUCTION ADMINISTRATION FOR REACHES A-D, B-3 PROJECT: This work started. Through the first 7 months we expended an average of \$10,000 per month. We suggest budgeting \$6,500 per month for the remaining 12 months of the anticipated project schedule and close out. (Based on the following people Al: (5hrs/mo., Don: 24hrs/mo. Chris/Jeff 12hrs/mo.)

This would bring the total construction support budget to \$170,000 or about 1.3% of the construction costs.

Additional \$100,000 is requested to provide CA funds for the remainder of the project.

- C. 125 - ADDITIONAL WORK TO RELOCATE B-1 (RFI 42): CSW|ST2 continues to hold approximately \$35,000 to relocate waterline in B-1 due to the proximity of the

Drew McIntyre
North Marin Water District
October 1, 2014
Page 2

water line to the Caltrans fence. This is a pending resolution between TAM, Caltrans and NMWD. (This is not included in the fee requested on Page 6.)

D. 126 - FIELD SURVEY, BOX LOCATIONS AND SUBSEQUENT EASEMENTS PREPARATION AND CONSULTATION FOR RECORD DRAWINGS (REACH E(-B1):

Task 1: Box Locations

Provide 20 hours of field survey time to locate (39) final box locations, and valve covers along the length of the pipe. The box locations will be based on the control which Caltrans is using for this segment of the work and will be surveyed within 0.1 feet. Manways will be opened by NMWD personnel and the surveyors will locate the actual top of pipe.

Task 2: Base Map

Compile the field survey information (Manways, Air Release Valves, Hydrants, Blow-offs, fencing, etc.) into a base map which will depict the relationship of the as-built data in relationship to the Caltrans and County R/W, as shown on the contract drawings.

Task 3: Easements

Provide support to NMWD in their discussions and negotiations with TAM and Caltrans regarding modifications to the easements to satisfy NMWD's requirements.

Task 4: Provide additional information on Field Survey to incorporate Contractor comments and other construction changes as well as creating an operational set of drawings removing extraneous Caltrans required information as requested by the District.

We are requesting an additional \$5,000 to cover this work.

NEW TASKS SINCE APRIL 3, 2014

- A. 127—PIPE ELEVATION REACH E, RFI 69 (SILVIERA RANCH):
During the highway/pipeline construction, the Silvierra Ranch proposed construction of a concrete cattle crossing of Highway 101. This work included surveying the elevation of the installed pipe, and design and layout of a protective cap over the new 42" line as well as additional drainage modifications.

Drew McIntyre
North Marin Water District
October 1, 2014
Page 3

We are requesting an additional \$3,000 to cover this work.

- B. 128—SURVEY EXISTING POLES AND CENTERLINE OF THE PROPOSED 42" AQUEDUCT IN THE VICINITY OF THE POLES ALONG REACH B: This work was necessary since the poles that were scheduled to be removed prior to the AEEP work were not removed. As a result the Contractor requested the poles be located to determine what effects on the construction may result from working around the poles.

We are requesting an additional \$1,377.50 to cover this work.

- C. 129—D-2 LACK OF FRONTAGE ROAD NEAR GUNN LANE (WINDHAVEN AND 21 GUNN LANE PUMP STATIONS): The design drawings anticipated that the B-2 Contractor would have constructed the frontage road prior to construction of the D-2 horizontal directional drill. However, the B-2 Contractor is not able to do this in a timely and economic manner. An alternative boring location as well as the moving pump locations may be required

We are requesting an additional \$18,818 to cover this work.

- D. 130—D-3 WORK TO RELOCATED DIRECTIONAL DRILL DUE TO LACK OF TEMPORARY CONSTRUCTION EASEMENT: The design drawings which were reviewed by Caltrans anticipated a laydown temporary easement over the Lofting Parcel. The final acquisition by Caltrans from the Loftings did not include this temporary easement. The Loftings and Caltrans are not currently able to provide this laydown area. NMWD and the Contractor have negotiated relocating the D-3 line to the Costentino Parcel and the plans need to be modified to reflect the change so that the Contractor can proceed.

We are requesting an additional \$9,302 to cover this work.

- E. 131—PROTECTION FOR LOFTING WELL: As requested by Caltrans, we provided additional cut-off trench dams in trench section to protect the Lofting well from potential adverse effects of a permanent trench with permeable backfill.

We are requesting an additional \$1,470 to cover this work.

- F. 132—MODIFICATIONS TO DESIGN RESULTING FROM UNKNOWN GAS LINE IN REACH B: In the vicinity of Station 6659+15 the Contractor, PG&E, and the pipe manufacture requested modification to the fabrication to clear this line.

Drew McIntyre
North Marin Water District
October 1, 2014
Page 4

We are requesting an additional \$1,800 to cover this work.

- G. 133—REVISIONS TO REACH A SCHEDULE: The contract documents instructed the Contractor that the Reach A segment would be available for construction after August 1, 2014. While this was generally true, a short portion between station 6666+00 and 6679+90 was still being used by the B-2 Contractor. Resolving this overlap required additional meetings and developing options to confer with Caltrans and B-2 program manager and designer to allow the pipeline work through this area to proceed.

We are requesting an additional \$2,500 to cover this work.

- H. 134—RELOCATE THE CORROSION PROTECTION SYSTEM IN TWO LOCATIONS: One in the vicinity of the Corda Service near San Antonio Creek. The second at the entry to the Redwood Landfill. The first location in the vicinity of the Corda Service required shifting the anode field to the south side of the creek to be able to reuse the existing electrical service. The second location of the Redwood Landfill requires removing the anode field from the Silveira property and placing it within the future County right-of-way outside the off-ramp.

We are requesting an additional \$5,000 to cover this work.

- I. 135—MODIFY ARV TO INCREASE THE LONG TERM PROTECTION OF AND PROVIDE LOWER MAINTENANCE COSTS FOR THE OPERATION OF THE PIPE LINE

We are requesting an additional \$3,800 to cover this work.

- J. 136—MODIFICATIONS TO CORDA WATER SERVICE: The Corda service required modification based on a request by Caltrans to move the existing service and reconnection point. This required retapping the new pipe to accommodate the Caltrans change as well as having Caltrans approve having the water service hang from the bridge over San Antonio Creek.

We are requesting an additional \$4,204 to cover this work.

- K. 137—FUTURE DETAILING OF FINAL CONNECTION POINTS AT THE TIE-IN POINTS: As part of the final tie-in work at the north, middle and south point of

Drew McIntyre
North Marin Water District
October 1, 2014
Page 5

connection, specific fabrication details will be established and coordinated with the contractor and pipe fabricator.

We are requesting an additional \$11,400 to cover this work.

L. 138—FIELD SURVEY, BOX LOCATIONS AND SUBSEQUENT EASEMENTS PREPARATION AND CONSULTATION FOR RECORD DRAWINGS (REACHES A-D):

Task 1: Box Locations

Provide 24 hours of field survey time to locate approximately 180 boxes (valve, telemetry, CTS), marker posts, fire hydrants, and water services along the length of the pipe. The box locations will be based on the control which Caltrans is using for this segment of the work and will be surveyed within 0.1 feet. Manways will be opened by NMWD personnel and the surveyors will locate the actual top of pipe.

Task 2: Base Map

Compile the field survey information (Manways, Air Release Valves, Hydrants, Blow-offs, fencing, etc.) into a base map which will depict the relationship of the as-built data in relationship to the Caltrans and County R/W, as shown on the contract drawings.

Task 3: Easements

Provide support to NMWD in their discussions and negotiations with TAM and Caltrans regarding modifications to the easements to satisfy NMWD's requirements.

Task 4: Provide additional information on Field Survey to incorporate Contractor comments and other construction changes as well as creating an operational set of drawings removing extraneous Caltrans required information as requested by the District.

We are requesting an additional \$29,000 to cover this work.

SUBCONSULTANTS: Corpro – Corrosion Engineering: Additional work is anticipated from Corpro and Dave Thomas' replacement to complete the construction and checking of the pump stations.

Additional \$6,826.68 is requested to bring budget in line with effort.

Drew McIntyre
North Marin Water District
October 1, 2014
Page 6

REIMBURSABLES

Additional \$2,435.21 requested to bring budget in line with effort.

The total Additional Fees requested for the work identified is \$209,433.39.

The attached table summarizes the budget status and our request that the project budget be modified and increased to cover our additional services and reflect the unused budgets previously allocated to the work.

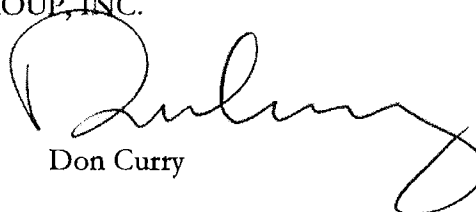
We appreciate working with you and NMWD and will continue to be responsive and conscious of the project budgets, trying to minimize NMWD exposure.

Sincerely,

CSW/STUBER-STROEH ENGINEERING GROUP, INC.



Al Cornwell
R.C.E. #27577



Don Curry

AGC:gmp

Enclosure

PROJECT BUDGET STATUS		4.1131.02							September 30, 2014		
	Description	Utility Agreement B1	Utility Agreement B3	Initial Contract Values (date)	Budget Increases May 11, 2014	Total Contract Value May 11, 2014	Add Services Request May 11, 2014	Total Contract Values through May 11, 2014	Billing through August 10, 2014	Add Services Request September 30, 2014	comments
101	Gap Closure (Reach C/D)			56,130		56,130.00	-8,762.00	47,368.00	47,368.11		complete
102	Kastania (Reach A)			49,980		49,980.00	37,459.25	87,439.25	87,439.25		complete
103	B-3 (Reach B)			47,010		47,010.00	45,049.25	92,059.25	91,418.25		complete
104	B-1 (Reach E)			47,406		47,406.00	-30,351.50	17,054.50	17,054.50		complete
105	Project Management (Reaches A-E)	x	x(p)	20,000	42,000	62,000.00	22,578.00	84,578.00	64,977.50		
CAS 1(106)	Environmental Review (Reaches A-D)		x		17,160	17,160.00	7,338.00	24,498.00	24,255.36	3,500.00	additional work on Plume for Kastania Gas & Stop
Additional Services Recap											
CAS 2 107	Convert Reach A to Stand Alone (Reach A)				6,400	6,400.00	-6,400.00	0.00			complete
CAS 3 108	Telemetry Line at Kastania Pump (Reach A)				3,000	3,000.00	-360.00	2,640.00			complete
CAS 4 109	Landscape at Korean Church (Reach C/D)				5,700	5,700.00	-4,990.50	709.50			complete
110	Alignment and x sections at Korean and Majauskas (Reach C/D)				8,000	8,000.00	-5,628.00	2,372.00	2,372.00		complete
111	Explore one or two contracts for Reaches A-D		x(p)		9,500	9,500.00	-4,515.00	4,985.00	4,985.00		complete
112	Misc Survey for locations and supplemental design requirements (Reaches A and B)				5,000	5,000.00		5,000.00	3,115.00		
113	Potholing exposed utilities (Reaches A-D)				6,000	6,000.00	-6,000.00	0.00			
114	Utility Poles along B-1 ATT (Reach E)	x			3,400	3,400.00	243.50	3,643.50	3,643.50		complete
115	Kastania Easements (Reach A)				1,200	1,200.00	2,200.00	3,400.00	944.00		
116	Construction Administration B-1 (Reach E)	x			30,000	30,000.00	-13,734.50	16,265.50	12,858.00		
117	Explore cost contribution for B-3 between Caltrans and NMWD (Reach B)		x(p)		2,400	2,400.00	2,020.50	4,420.50	4,420.50		complete
118	Add alternate sheets to reach B for 30" pipe (Reach B)		x		31,200	31,200.00	-102.00	31,098.00			complete
119	Construction Administration Reaches A, B, C/D		x(p)		48,000	48,000.00	22,000.00	70,000.00	64,257.00	100,000.00	
120	Tree Removal bid documents and coordination (Reaches B and C/D)		x(p)				28,297.50	28,297.50	28,499.00		additional CA work
121	FCA Revision (no cost) (Reach E)							0.00	8,229.00		no cost
122	Change to Majauskas Line (Reach B)		x				2,763.50	2,763.50	2,763.50		complete
123	SWPPP Monitoring for Tree Contract and SWPPP preparation(\$1000) Reaches B and C/D)		x(p)				7,250.00	7,250.00	8,662.50		complete
124	Work on Utility Agreement and Bid analysis (Reaches A-D)		x(p)				7,653.00	7,653.00	7,270.50		complete
125	Re-align pipe Reach E, RFI42	x						0.00	34,286.50	35,000.00	Not included in add service total
126	As Build Field survey and related easement work B1 (Reach E)	x					12,380.00	12,380.00	16,262.00	5,000.00	additional work on record drawings
127	Pipe Elevation Reach E RFI 69	x						0	1,814.50	3,000.00	refer to 9/16/2014 add service request
128	Survey Poles along Reach B	x						0.00	1,377.50	1,377.50	refer to 9/16/2014 add service request
129	D-2 lack of easement on Lofting Parcel		x						953.50	18,818.00	refer to 9/16/2014 add service request
130	D-3 schedule and construction of Kastania Extension and new directional drill location		x						1,203.00	9,302.00	refer to 9/16/2014 add service request
131	lofting well protection		x						1,470.00	1,470.00	refer to 9/16/2014 add service request
132	Unknown gas line		x						420.00	1,800.00	refer to 9/16/2014 add service request
133	Reach A schedule and logistics		x						2,476.00	2,500.00	refer to 9/16/2014 add service request
134	Relocate rectifier field (affects Reaches A-E)		x						1,712.50	5,000.00	refer to 9/16/2014 add service request
135	ARV modifications		x						2,870.00	3,800.00	refer to 9/16/2014 add service request
136	Corda Water Service Change		x						4,204.00	4,204.00	refer to 9/16/2014 add service request
137	Design 3 Tie-in points for South, Middle and North connections		x							11,400.00	refer to 9/16/2014 add service request
138	Record Drawings Reaches A-D		x							29,000.00	refer to 9/16/2014 add service request
Subtotals				220,526	218,960	439,486.00	116,389.00	555,875.00	542,076	200,172	
Consultants	Corpro			15,000		15,000.00	9,750.00	24,750.00	28,076.68	6,826.68	refer to 9/16/2014 add service request
Reimbursables	Copies etc	x(p)	x(p)	1,014		1,014.00	5,909.00	6,923.00	8,058.21	2,435.21	refer to 9/16/2014 add service request
Total Project Fees (including consultants)				236,540	218,960	455,500.00	132,048.00	587,548.00	578,211.36	209,433.39	

AMENDMENT NO. 5 NMWD-CALTRANS COST ALLOCATION

TASK	DESCRIPTION	APP'D FEE	ADD'L REQUEST	NMWD COST	CALTRANS COST
106	Environmental Review Reach A-E	\$24,498	\$3,500	\$3,500	\$0
119	Construction Administration Reaches A, B, C/D	\$70,000	\$100,000	\$31,900	\$68,100
126	As Build Field survey and related easement work B1 (Reach E)	\$12,380	\$5,000	\$0	\$5,000
127	Pipe Elevation Reach E RFI 69		\$3,000	\$0	\$3,000
128	Survey Poles along Reach B		\$1,378	\$0	\$1,378
129	D-2 lack of easement on Lofting Parcel		\$18,818	\$0	\$18,818
130	D-3 schedule and consruction of Kastania Extension and new directional drill location		\$9,302	\$0	\$9,302
131	lofting well protection		\$1,470	\$0	\$1,470
132	Unknown gas line		\$1,800	\$0	\$1,800
133	Reach A schedule and logistics		\$2,500	\$0	\$2,500
134	Relocate rectifier field (affects Reaches A-E)		\$5,000	\$1,595	\$3,405
135	ARV modifications		\$3,800	\$1,212	\$2,588
136	Corda water service change		\$4,204	\$0	\$4,204
137	Design 3 Tie-In Pts		\$11,400	\$3,637	\$7,763
138	Record Drawings Reach A-D		\$29,000	\$9,251	\$19,749
	Subtotals	\$106,878	\$200,172	\$51,095	\$149,077
	Corrpro	\$24,750	\$6,827	\$2,178	\$4,649
	Copies etc	\$6,923	\$2,435	\$777	\$1,658
	Total Fees (including consultants)	\$150,931	\$209,433	\$54,049	\$155,384

12

MEMORANDUM

To: Board of Directors
From: Pablo Ramudo, Water Quality Supervisor *PR*
Subject: Lead and Copper Rule Compliance in the West Marin Water System
P:\LABWQ Supv\2014\Memo BOD PR Lead and Copper compliance.docx

October 3, 2014

RECOMMENDED ACTION: Information only.

FINANCIAL IMPACT: \$5500 in FY 2015

Due to the exceedance of the action level for lead in the last routine lead and copper monitoring cycle (July 2014), the California State Water Resources Control Board, Division of Drinking Water (formerly California Department of Public Health) is requiring a number of steps for our compliance with the lead and copper rule, each of which is described below. The Division of Drinking Water has provided a schedule for the completion of each action which is identified in bold faced type.

1) Lead Consumer Notification –completed **9/25/14**.

Each of the ten customers who participated in the lead and copper monitoring is to be notified of the results of the monitoring in writing. The letter contains information about the entire set of lead data as well as the result specific to their home (please see the attachment 1 example). A copy of the “Lead Public Education” letter (see below) was included along with the customers’ results.

2) Lead Public Education –complete by **10/9/14**.

NMWD is required to conduct public education by mailing to each West Marin Water system (Point Reyes) customer an informational letter concerning lead in drinking water, planned action by NMWD, and how to reduce lead intake from all sources. The Division of Drinking Water provided a template for this information which was then edited to include

different forms including partial system tests. After the study is accepted we will have 12 months to begin installation of corrosion control treatment and an additional 12 months to complete it.

The cost of compliance in fiscal year 2014/2015 will comprise mostly of lab testing, coordination with customers for sample collection, and outreach for public information. This will amount to approximately \$5500 in staff time. There may also be additional staff time required based on our customers' response to the public education letter and any requests for additional testing. We will most likely be able to absorb these costs by combining the necessary work with existing programs. If additional funds are needed to complete these tasks, staff will return to the Board at a later date with a request for a budget augmentation

September 24, 2014

Subject: Lead and Copper Monitoring Program

Dear

North Marin Water District appreciates your participation in the lead and copper tap monitoring program. This letter is to report the lead result from the sample collected at your residence, _____, on 6/3/14. The reported lead result for your residence was 0.0189 milligrams per liter (mg/L). The 90th percentile lead sample results for North Marin Water District's Point Reyes System is 0.0170 mg/L.

What Does This Mean?

Under the authority of the Safe Drinking Water Act, the U.S. Environmental Protection Agency (EPA) and State of California set the Action Level for lead at 0.015 mg/L. This means utilities must ensure that water from the customer's tap does not exceed this level in at least 90 percent of the homes sampled (90th percentile). The Action Level is the concentration of a contaminant which, if exceeded, triggers treatment or other requirements which a water system must follow.

The U.S. EPA also set a maximum contaminant level goal (MCLG) for lead of zero. The MCLG is the level of lead in drinking water below which there is no known or expected risk to health.

This consumer notification information is for the occupants of the residence where the lead samples were collected. Some individual homes may have high lead concentrations while the 90th percentile for the entire water system is below the Action Level. These individual high levels may be due to conditions unique to the individual home, such as the presence of lead solder, brass and chrome plated brass faucets, and lead pipes that connect your house to the water meter (private service lines). If your reported lead result exceeds the Action Level of 0.015 mg/L, we strongly urge you to review the enclosed information and take the steps listed to reduce your exposure to lead in drinking water.

Sincerely,

Pablo Ramudo
Water Quality Supervisor



October 9, 2014

Dear West Marin Customer:

SOME HOMES IN THIS COMMUNITY HAVE ELEVATED LEAD LEVELS IN THEIR DRINKING WATER. LEAD CAN POSE A SIGNIFICANT RISK TO YOUR HEALTH. PLEASE READ THE ENCLOSED NOTICE FOR FURTHER INFORMATION.

The California State Water Resources Control Board (**SWRCB**), the U.S. Environmental Protection Agency, and North Marin Water District (**NMWD**) are concerned about lead in your drinking water. NMWD conducts monitoring for lead and copper from home faucets every three years in accordance with the Safe Drinking Water Act Lead and Copper Rule. Although lead and copper are not found in our source water wells or in treated drinking water entering water mains, these metals can leach from plumbing materials and fixtures such as copper pipes, lead-containing solder, and brass faucets found in homes. Although most homes have no or very low levels of lead in their drinking water, in the most recent round of testing (July 2014) 3 homes in the community were found to have lead levels above the state and federal action level of 15 parts per billion (ppb), or 0.015 milligrams of lead per liter of water (mg/L). Under state and federal law, NMWD is required to have a program in place to minimize lead in your drinking water by February 2018. This program includes corrosion control treatment, source water treatment, and public education. If you have any questions about how we are carrying out the requirements of the lead regulation, please call Pablo Ramudo, Water Quality Supervisor at 415-761-8929. This handout explains the simple steps you can take to protect you and your family by reducing your exposure to lead in drinking water.

HEALTH EFFECTS OF LEAD: Lead is a common metal found throughout the environment. Lead-based paint is the most common source of lead exposure in homes built before 1978. Other sources of lead exposure include lead in household dust and lead in soil. Lead can be found in some consumer items such as imported food, spices, medicines and tableware. Lead can cause damage to the brain, red blood cells and kidneys in both children and adults. The greatest risk is to infants, young children and pregnant women. Lead is stored in the bones, and it can be released later in life. During pregnancy, the fetus receives lead from the mother's bones, which may affect brain development. There is no known safe level of lead in the body. Adults with kidney problems and high blood pressure can be affected by low levels of lead more than healthy adults. Small amounts of lead in the body can build up and cause lifelong learning and behavior problems. Children under six years old are most at risk for lead poisoning because their brains and nervous systems are still forming. Scientists have linked the effects of lead on the brain with lowered IQ in children. In addition, a child at play often comes into contact with sources of lead contamination, such as dirt and dust that rarely affect an adult. It is important to wash children's hands and toys often and to try to make sure they only put food in their mouths.

LEAD IN DRINKING WATER: Lead in drinking water, although not a common cause of lead poisoning in California, can significantly increase a person's total lead exposure, particularly the exposure of infants who drink baby formula and concentrated juices that are mixed with water. The U.S. Environmental Protection Agency estimates that drinking water can make up 20 percent or more of a person's total exposure to lead. Lead is unusual among drinking water contaminants in that it seldom occurs naturally in water supplies like rivers and lakes. Lead enters drinking water primarily as a result of the corrosion, or wearing away, of materials containing lead in the water distribution system and household plumbing. These materials include lead-based solder used to join copper pipe, brass and chrome plated brass faucets, and pipes made of lead that connect your house to the water meter (private service lines). In 1986, Congress banned the use of lead solder containing greater than 0.2% lead, and restricted the lead content of faucets, pipes and other plumbing materials to 8.0%. In California, a similar law prohibiting the use of both lead solder and lead pipe was enacted in 1985. A stricter law was enacted in 2010 that further reduces the amount of lead in solder and in faucets that can be sold in California. You should make sure that a plumber uses solder and faucets that meet this standard (NSF 61, Annex G) if the plumber does work in your home.

When water stands in lead pipes or plumbing systems containing lead for several hours or more, the lead may dissolve into the drinking water. This means the first water drawn from the tap in the morning, or later in the afternoon after returning from work or school, can contain fairly high levels of lead.

STEPS YOU CAN TAKE IN THE HOME TO REDUCE EXPOSURE TO LEAD IN DRINKING WATER: Despite our best efforts mentioned earlier to control water corrosivity and remove lead from the water supply, lead levels in some homes or buildings can be high. To find out whether you need to take action in your own home, have your drinking water tested to determine if it contains excessive concentrations of lead. Testing the water is essential because you cannot see, taste, or smell lead in drinking water. Some local laboratories that can provide this service are listed at the end of this letter. For more information on having your water tested, please call 761-8929. If a water test indicates that the drinking water drawn from a tap in your home contains lead above 15 ppb, then you should take the following precautions:

1. Let the water run from the tap before using it for drinking or cooking for at least 30 seconds or until the water feels cold. If the water in a faucet has gone unused for more than six hours run the water for one to five minutes or until the water feels cold. The longer water resides in your home's plumbing the more lead it may contain. If your house has a lead private service line to the water meter, you may have to flush the water for a longer time. Although toilet flushing or showering flushes water through a portion of your home's plumbing system, you still need to flush the water in each faucet before using it for drinking or cooking. Flushing tap water is a simple and inexpensive measure you can take to protect your family's health. It usually uses less than one or two gallons of water and costs less than \$1 per month. To conserve water, fill a couple of bottles for drinking water after flushing the tap and, whenever possible, use the first flush water to wash the dishes or water the plants. Free 32oz glass drinking water bottles are available from NMWD when you sign up for a free Water Smart Home Survey. Ask your landlord for help in locating the source of the lead and for advice on reducing the lead level.

2. Try not to cook with, or drink water from the hot water tap. Hot water can dissolve lead more quickly than cold water. Do not use hot water from the tap to make baby formula. If you need hot water, draw water from the cold tap and heat it on the stove. Boiling water will not reduce the lead content of the water.

3. Remove loose lead solder and debris from the plumbing materials by removing the faucet strainers from all taps and running the water from 3 to 5 minutes. Do this periodically to flush out any debris that has accumulated over time.

4. If your copper pipes are joined with lead solder that has been installed illegally since it was banned in 1986, notify the plumber who did the work and request that he or she replace the lead solder with lead-free solder. Under federal and California law, the standard for what constitutes lead-free solder is solder that contains less than 0.2% lead. Lead solder looks dull gray, and when scratched with a key looks shiny. In addition, notify the California Department of Public Health and your local environmental health department about the violation. If your kitchen faucet was installed before 2010 consider replacing the faucet with a faucet that meets the new standard (faucets meet the standard if the faucet is labeled with NSF 61, Annex G).

5. Determine whether or not the service line that connects your home or apartment to the water meter is made of lead. The best way to determine if your private service line is made of lead is by either hiring a licensed plumber to inspect the line or by contacting the plumbing contractor who installed the line. You can identify the plumbing contractor by checking the record of building permits which should be maintained in the files of the Marin County Community Development Agency. A licensed plumber can at the same time check to see if your home's plumbing contains lead solder, lead pipes, or pipe fittings that contain lead. Acceptable replacement alternatives include copper, stainless steel, and plastic pipes. Partial replacement should avoid the creation of mixed piping systems and include the installation of approved dielectric couplings at all dissimilar metal interfaces.

6. Have an electrician check your wiring. If grounding wires from the electrical system are attached to your pipes, corrosion may be greater. Check with a licensed electrician or your local electrical code to determine if your wiring can be grounded elsewhere. DO NOT attempt to change the wiring yourself because improper grounding can cause electrical shock and fire hazards.

The steps described above will reduce the lead concentrations in your drinking water. However, if a water test indicates that the drinking water coming from your tap contains lead concentrations in excess of 15 ppb after flushing, or after NMWD has completed actions to minimize lead levels, then you may want to consider the following additional measures:

A) Purchase or lease a home treatment device. Home treatment devices are limited in that each unit treats only the water that flows from the faucet to which it is connected, and all of the devices require periodic maintenance and replacement. Devices such as reverse osmosis systems or distillers can effectively remove lead from your drinking water. However, these treatments remove dissolved minerals, and water treated by these devices will have a greater tendency to leach lead from brass faucets or fittings which the water contacts after treatment. Some activated carbon filters may reduce lead

levels at the tap, however all lead reduction claims should be investigated. Be sure to check the actual performance of a specific home treatment device before and after installing the unit. The California Department of Public Health certifies the effectiveness of home treatment devices. Only devices certified by the California Department of Public Health to remove lead should be used for this purpose.

B) Purchase bottled water for drinking and cooking. Do not store bottled water in imported ceramic crocks as the glaze on the crocks may contain lead that can leach into the water stored in the crock.

You can consult a variety of sources for additional information. Your family doctor or pediatrician can perform a blood test for lead and provide you with information about the health effects of lead. State and local government agencies that can be contacted include:

- The Marin County Environmental Health at (415) 473-6907 can provide you with information about your community's water supply and a list of local laboratories that have been certified by the California Department of Public Health for testing water quality.
- The Marin County Community Development Agency at (415) 473-6292 can provide you with information about building permit records that may contain the names of plumbing contractors that plumbed your home.
- The California Department of Public Health, Childhood Lead Poisoning Prevention Branch has a wealth of information readily available in multiple languages about the health effects of lead and how you can have your child's blood tested. In Marin County, contact Maureen De Nieva at the Marin County Health Department at (415) 473-6731 or mdenieva@marincounty.org. Also visit the Marin County website at <https://www.marinhhs.org/marin-county-lead-poisoning-prevention-program>

The following are two State-certified laboratories in your area that you may call to have your water tested for lead for a fee:

Brelje and Race Laboratories, Inc.
425 South E Street
Santa Rosa, CA 94504
(707) 544-8807

Analytical Sciences, Inc.
110 Liberty Street
Petaluma, CA 94952
(707) 769-3128

Sincerely,



Chris DeGabriele
General Manager

13

MEMORANDUM

To: Board of Directors
From: David L. Bentley, Auditor-Controller
Subj: Lockbox Services Update
I:\aclword\banking\us bank lockbox services status report.docx

October 3, 2014

RECOMMENDED ACTION: Information Only**FINANCIAL IMPACT: None**

In August 2013 the Board approved staff's recommendation to begin using the Lockbox Services¹ of US Bank, the District's local banking services provider, with a goal to increase efficiency in response to the reduction of two staff members in the Administrative Department.

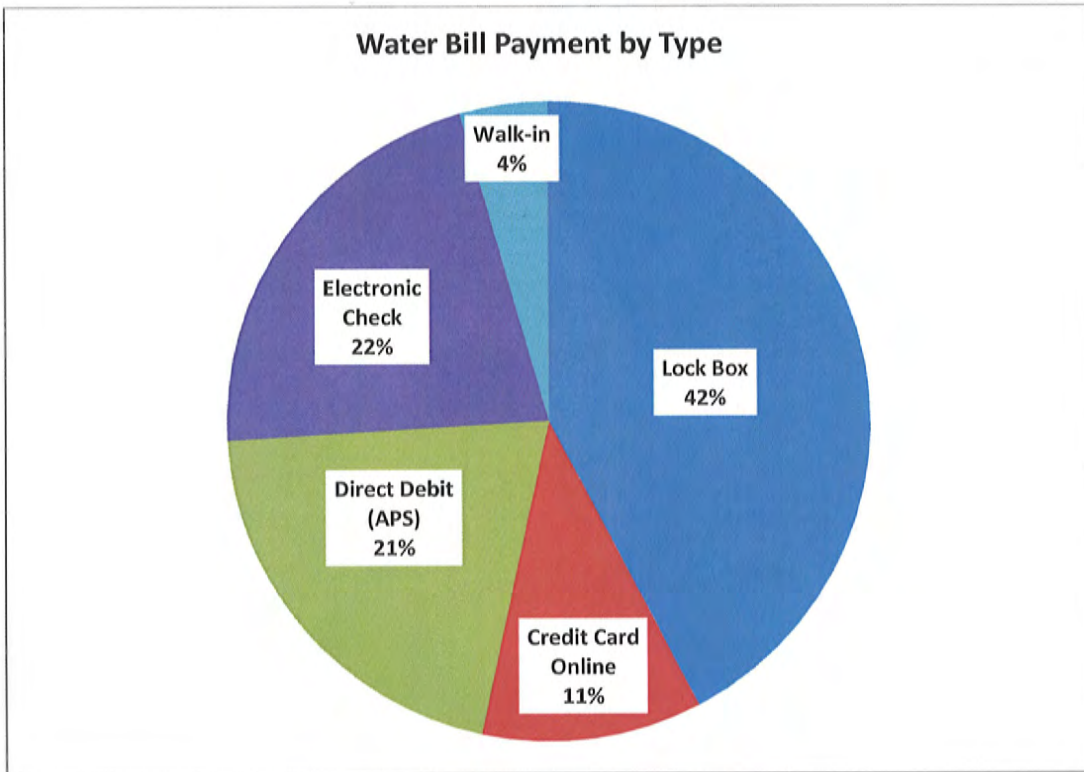
After several months of working with the US Bank programming staff, the District began directing payments to the new PO Box (Lockbox) in April 2014. The Auditor-Controller's concern about directing customers to send payments to Los Angeles turned out to be unfounded, as very few comments have been received.

Of interest, the number of checks received by mail continues to decrease, and has now fallen to 50,000 annually (out of 120,000 total), amounting to 42% of total payments received. A pie chart on the following page shows a current snapshot of payments received by source.

Using the lockbox has proven to be a significant time saver, and has allowed a reallocation of Consumer Services staff time to assist with other duties.

Staff is working on two new initiatives pertaining to customer payments. The first is to allow customers to have their water bill automatically charged to a credit card. While the District's Automatic Payment Service (APS) to directly debit the water bill amount against a bank account has been available since 1997, many customers would prefer the charge to go onto their credit card, enabling them to collect points or airline miles or cash back. We are working now to accommodate that request. Another initiative is to automate the posting of electronic payments received. When customers use their bank's Bill Pay service, the District receives a virtual check that must be manually posted to the Utility Billing system. Over 2,000 virtual checks are now received each month.

¹ A lockbox is a post office box that is accessed by a bank for receiving customer payments. Customers send their payments to the PO box. The bank then collects and processes the payments and deposits them into the District's account. The bank "captures" an image of each check and associated payment coupon into a digital format and converts it with optical character recognition software into a searchable file that the District stores. The bank sends an electronic record of payments to the District daily that is uploaded into the billing system, eliminating the tasks of opening payment envelopes, inspecting and separating payments and coupons, endorsing checks, and entering payments.



14

FOR ACCESSIBLE
MEETING INFORMATION
CALL: (707) 543-3350
ADD: (707) 543-3031



TECHNICAL ADVISORY COMMITTEE

MONDAY, OCTOBER 6, 2014

9:00AM

Utilities Field Operations Training Center
35 Stony Point Road, Santa Rosa, CA

1. Check In
2. Public Comment
3. Recap from September 8, 2014 TAC Meeting and Approval of Minutes
4. Water Supply Conditions and Summer Water Conservation
5. Temporary Urgency Change Order
6. Biological Opinion Status Update
7. Water Bond Update
8. Items for next agenda
9. Check Out

Draft Minutes of Technical Advisory Committee
35 Stony Point Road, Santa Rosa, California
September 8, 2014

Attendees: David Guhin, City of Santa Rosa
Jennifer Burke, City of Santa Rosa
Linda Reed, City of Santa Rosa
Rocky Vogler, City of Santa Rosa
Linda Hall, City of Santa Rosa
James Smith, Town of Windsor
Mary Grace Pawson, City of Rohnert Park
Dan Takasugi, City of Sonoma
Dan Muelrath, Valley of the Moon Water District
Damien O'Bid, City of Cotati
Mike Healy, City of Petaluma
Leonard Olive, City of Petaluma
Chris DeGabriele, North Marin Water District
Drew McIntyre, North Marin Water District
Mike Ban, Marin Municipal Water District
Pam Jeanne, SCWA
Mike Thompson, SCWA
Carrie Pollard, SCWA
Lynne Roselli, SCWA
Don Seymour, SCWA

Public Attendees: Brenda Adelman, RRWPC
David Keller, FOER
Margaret DiGenova, California American Water
Evan Jacobs, California American Water
Deborah Tavares
Tom Yarish, Friends of the Esteros
John Rosenblum

1. Check-in

Chair Chris DeGabriele called the meeting to order at 9:05a.m.

2. Public Comment

Deborah Tavares made comments on the proposed EPA definition and role to clarify water of the U.S. She further commented that Goldman Sachs is pursuing privatization of water systems and she will send a report to Linda Hall to be forwarded to the committee.

3. Water Supply Conditions and Summer Water Conservation

Chris DeGabriele commented on the FY 2013/14 water use report forwarded to the group from Brenda Adelman and that the report does not take into account local water supply. Santa Rosa held a successful D.I.Y. Outdoor Drought Solutions Event on August 23, at which 800 attended. The supplies for the event can be borrowed by others for their use. The reporting tool from the State Water Resources Control Board was discussed. The Town of Windsor reported they are not using population fluctuations in their reporting to the State Water Resources Control Board. DeGabriele commented North Marin Water District is prorating the population since there have been no guidelines from the state on specific reporting requirements.

Brenda Adelman asked how to get monthly reports from the State. Deborah Tavares stated that Sebastopol will not comply with Stage 3 water conservation requirements determined to be needed by the State. DeGabriele clarified that Sebastopol does not receive their water supply from SCWA.

4. Temporary Urgency Change Order

Pam Jeane, SCWA, reported that Lake Mendocino is at 28% storage capacity and Lake Sonoma is at 62% storage capacity. Outflow from Mendocino has been reduced to preserve storage pursuant to the order. She reviewed the requirements stipulated in the approved Temporary Urgency Change Order. SCWA is in constant contact with the Department of Fish and Wildlife regarding Russian River flow requirements to maintain fish passage and habitat. The outflow from Lake Sonoma has also been reduced. Dry Creek will have a new fish monitoring station installed. Water quality is also being monitored. A report will be filed when the order expires. A Water Demand Reduction Plan will be required by the Temporary Urgency Change Order. The order ends if we get into the flood pool at Lake Mendocino or at 180 days, which is February 10, 2015. Brenda asked when Lake Mendocino will run out of water. In reply SCWA advised Lake Mendocino is not expected to run out of water, and the rate of storage decline has been reduced over the last two weeks to maintain the water supply. Mendocino County Russian River Flood Control and Water Conservation Improvement District has also received a Temporary Urgency Change Order and has requirements that must be met. Their cooperation will help SCWA determine how to manage the in stream flows.

5. SCWA Rate Study

Lynne Roselli, SCWA, reported that a wholesale water rate study is being conducted by FH&H Consultants. Two technical memoranda have been submitted to SCWA. The memorandums will be provided sometime in October to a TAC ad hoc subcommittee for review and suggestions.

David Keller asked that any proposals for changes be available to the public.

DeGabriele commented that when the WAC has information it will be shared with the public.

6. FY2015/16 LRT2 Program Funding

The local supply recycled water and tier 2 water conservation program was started in 2001 with \$13M to develop additional water contractor local supplies, recycled water and expand water conservation efforts. \$11M has been approved by the WAC, with \$10.5M disbursed. Santa Rosa has not fully encumbered their funding allocation. Santa Rosa has been asked to submit any projects to be included so the funds can be disbursed to support those projects. David Guhin, City of Santa Rosa, stated that projects are being evaluated now to request funding.

7. August 24 Napa Earthquake Emergency Response

Chris DeGabriele asked for comments on SCWA and water contractor response to the Napa earthquake. Pam Jeane advised SCWA was initially most concerned about the Sonoma Valley waste water treatment plant they maintain, but there were no problems created by the quake. Power was lost in one location. Sonoma and Eldridge tanks on the Sonoma Aqueduct were not damaged. All facilities have been checked and no

damage has been detected. Damien O'Bid, City of Cotati, reported that Cotati had a loss of power for a lift station which was quickly restored. The City of Sonoma had no damage and ground water levels were constant. Private water storage tanks in Sonoma had some damage, but no leakage. The City of Santa Rosa has the ability to quickly identify any pressure drops and no problems were detected. A few property side leaks were reported, but Santa Rosa city system leaks were not found. North Marin had no noticeable problems. The State Public Health Department and Water Agency Response Network was utilized for Northern California. Emergency response crews were sent from other agencies to assist Napa in recovery.

8. Biological Opinion Status Update

Pam Jeane, SCWA, reviewed the Biological Opinion Status Update distributed at the meeting. The demonstration project for this year is under construction, with miles two and three under planning. Funds from the Army Corps of Engineers Continuing Authorities Program are being solicited to augment local funding. The Mirabel fish ladder project continues. The Estuary has been open for the entire summer. Outreach continues in the Dry Creek Area to keep residents informed of all the construction activity for the restoration process.

9. Water Bond Update

Chris DeGabriele gave an update. Legislation has been passed for the Water Supply Improvement Act of 2014. The bond is for \$7.8B. He listed the amounts that will go to various projects.

10. Items for Next Agenda

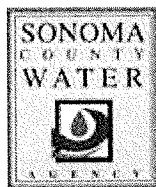
October 6 TAC Meeting

Water Supply Conditions and Summer Water Conservation
Biological Opinion Status Update

11. Check Out

Next TAC meeting is October 6
Next WAC/TAC meeting is November 3

Meeting adjourned at 10:10a.m.



Russian River Biological Opinion Update – October 2014

The Sonoma County Water Agency is continually planning and implementing the Russian River Biological Opinion requirements. The following project updates provide a brief synopsis of current work. For more detailed information about these activities, please visit www.sonomacountywater.org.

Dry Creek Habitat Enhancement and Demonstration Project

- Construction of the remainder of the one-mile demonstration project continues, within-stream construction projected to be completed by mid-October. Hanford Applied Restoration & Conservation, out of Sonoma, is constructing the project.
- Site identification, outreach to landowners, preliminary environmental studies and topographic surveys are underway for the second and third miles of habitat enhancement. Two firms, Interfluve and ESA PWA, are designing the second and third miles of habitat enhancement. Ten-percent designs have been completed and presented to the property owners for feedback. Each design consultant has been given over 1.25 miles of habitat enhancements to advance to 30% design.
- Water Agency staff is working closely with the US Army Corps of Engineers on a Continuing Authorities Program (CAP) project that should allow the Corps to contribute funding for a portion of the mile 2-3 phase of Dry Creek Habitat enhancement.

Fish Monitoring

Monitoring is underway for juvenile fish, with downstream migrant traps installed at Dry Creek and the Russian River at Mirabel. Traps are checked daily. Water Agency staff are regularly consulting with National Marine Fisheries Service and California Department of Fish and Wildlife regarding the status of the migration and plans for reservoir releases. With the inflatable dam down during the Mirabel Fish Passage Improvement Project construction, the return of adult fish are being monitored in Dry Creek using a sonar technology.

Mirabel Screen and Fish Ladder Replacement

Construction of the Mirabel Fish Passage Improvement Project is underway. Currently, crews are working on installing tiebacks in the permanent sheet pile wall which will enable more mass excavation.

Russian River Estuary Management Project

- All permits for the Lagoon Management Project have been received. The 2014 Lagoon Management Period began on May 15 and ends on October 15. On September 18, the river mouth closed and, as of September 30, remains closed with water levels rising slowly. Downstream migrant fish sampling is underway at Austin Creek and with an antenna at Duncans Mills that can read passive integrated transponders (PIT) tags. Biological and water quality monitoring, including fisheries and invertebrate sampling are ongoing. Monthly baseline monitoring of seals and other pinnipeds is ongoing.
- Field investigations of the jetty have begun. Work was conducted in early March, including the installation of monitoring wells, and resumed during the summer. The purpose of the studies is to determine if and how the jetty impacts the formation of the barrier beach and lagoon water surface elevation.

Fish Flow Project

Work is occurring internally on the preparation of the draft Environmental Impact Report for the Fish Habitat Flows and Water Rights Project. The EIR is being prepared by Water Agency staff, with assistance from consultants on some areas of impact analysis. A draft EIR is anticipated to be released late winter/early spring.

Interim Flow Changes

On August 25, the State Water Resources Control Board issued a new order, allowing minimum flows to be reduced to 50 cfs in the upper river and 60 cfs in the lower river (minimum flows are based on a five day running average). The Water Agency and the Mendocino County Russian River Flood Control and Water Conservation Improvement District requested these changes to preserve water in Lake Mendocino for water supply and for the fall Chinook run. Due to the drought, this is the third TUC issued since December 2013. The Water Agency staff consult regularly with resource agencies and upper river users regarding Lake Mendocino conditions.

Public Outreach, Reporting & Legislation

- The Water Agency continues to work with contractors through the Sonoma-Marín Saving Water Partnership on an ad campaign messaging: There's a Drought on. Turn the Water Off.
- The Friday, September 26 Press Democrat featured a front-page article on the Dry Creek Habitat Enhancement project.



Mirabel Fish Passage Improvement Project, September 2014

15

**NOTICE OF MEETING OF
NORTH BAY WATERSHED ASSOCIATION**

Notice is hereby given that a meeting of the North Bay Watershed Association will be held as follows:

Date: Friday, October 3, 2014
 Time: 9:30 a.m. – 11:30 a.m.
 Location: Petaluma (Lucchesi) Community Center
 320 N. McDowell Boulevard
 Conference Room 2
 Petaluma, CA 94954

AGENDA

<u>Item</u>	<u>Recommendation</u>
1. Call to Order (Jack Gibson, Chair)	
2. Public Comment	
3. Approval of the Agenda (1 min.)	Approve
4. Approval of Minutes	Approve
5. Treasurer's Report (1 min.)	Accept
6. North Bay Water Reuse Authority Update (45 min.) Guest Speaker: Chuck Weir, NBWRA	Information
7. Water in an Uncertain Future Climate (45 min.) Guest Speaker: Bob Wilkinson, Argos	Information
8. Project Approval (10 min.) Coyote Creek and Bothin Marsh Dredge Sediment Reuse Pilot Project (\$25k) Harry Seraydarian	Action
9. Items of Interest	
10. Items for Next Agenda	

Next Meeting Information:

Next Meeting: November 7, 2014
 Novato Sanitary District
 500 Davidson Street
 Novato, CA 94945

NORTH BAY WATERSHED ASSOCIATION

Minutes for the meeting of the North Bay Watershed Association (NBWA) Board of Directors.

Date: September 5, 2014
Time: 9:30 a.m.
Location: Novato Sanitary District
500 Davidson Street
Novato, CA 94945

Directors Present: Directors present included:

<u>Board Member</u>	<u>Agency/Organization</u>	<u>Board Member</u>	<u>Agency/Organization</u>
Steve Barbose	City of Sonoma and Sonoma Valley County Sanitation District	Pamela Meigs	Ross Valley Sanitary District
Rick Fraites	North Marin Water District	Brant Miller	Novato Sanitary District
Jack Gibson	Marin Municipal Water District	Scott Ray	Bel Marin Keys Community Services District
Kathy Hartzell	Central Marin Sanitation Agency	Judy Schriebman	Las Gallinas Valley Sanitary District
Mark Luce	Napa Sanitation District	Pamela Tuft	City of Petaluma

Directors present represented 11 out of the 16 agencies signatory to the Association MOU.

Board Actions:

1. **Call to Order.** Jack Gibson, Chair, called the meeting to order at 9:36 a.m.
2. **Public Comment.** None.
3. **Approval of the Agenda.** (See Handout) The Board unanimously approved the agenda.
4. **Approval of the Minutes of the Board Meeting held July 11, 2014.** (See Handout) The Minutes of the Board Meeting held on July 11, 2014 were unanimously approved, with one abstention by Jack Gibson.
5. **Treasurer's Report.** (See Handout) The Treasurer's Report was accepted as presented by Harry Seraydarian.
6. **Desalination in California.** Ron Davis, Executive Director of CalDesal provided an overview of desalination efforts in California. He noted that opinion is changing, due to drought and climate change, and that water agencies, especially on the coast, are supporting desalination as part of a well rounded water supply portfolio. He explained that CalDesal is a statewide non-profit that supports ocean and groundwater desalination and brine disposal (salt management). Ron highlighted that after SBX71 (a water system reform bill) passed, the DWR became a proponent of desalination as one of 13 water supply options, especially for coastal communities. Ron noted that recycled water requires an extra set of purple pipes, whereas desalination can go directly into a drinking water system and is not subject to drought or Delta limitations. Ron described how even though California is usually on the cutting edge, there are no large commercial desalination plants in California, whereas Spain and Australia both have large plants based on technology developed by UCLA. He explained that the State Water Resources Control Board started regulations over two years ago for desalination intakes and brine discharge and just released a draft staff report in July 2014 with a hearing scheduled on August 19 to receive public input and comments on the proposed Desalination Amendments to the Water Quality Control Plan for Ocean Waters. Ron opened the floor to questions and the NBWA Board Members had a large number. Are you limited to ocean desalination? (No, includes bay desalination also.) Doesn't Santa Barbara have a plant? (Santa Barbara built a plant in the 1990s, but mothballed it, since they are now connected to the State Water Project. Santa Barbara sold some equipment to Saudi Arabia, but will review desalination again and argue that they have an "existing project" under SWRCB regulations.) What is timing for wellhead treatment of agricultural wells? (Can do now for brackish water but cost is an issue. Already used for controlling salinity intrusion and land subsidence.) How do Australia and Spain handle brine? (Mixing or dispersion [spraying under pressure in diffusion zone].) Is treatment always reverse osmosis (RO) or is multi-stage flash considered? (RO is preferred but looking at alternatives.) Should water agencies partner with wastewater systems on brine discharge? (Yes, to meet SWRCB requirements – assumed SWRCB staff preferred multi-port disposal with wastewater, but if there is potential for wastewater reuse, then they prefer straight diffusion.) What are issues of opponents to desalination? (Usually environmental issues and no growth perspective, example is Santa Cruz.) Are Carlsbad costs to users estimated at \$5 to \$7/month realistic? (Desalination is more expensive than other options at ~ \$1,800/acre foot but if you roll into existing rates, then \$5/month is reasonable considering the low interest rates and that construction is under budget.) Is Carlsbad blending or using dispersion for brine disposal? (Different technology –

goes to power plant system for intake and outtake which is already permitted.) What do you think of Marin Desalination? (We do not second guess locals, MMWD continues to protect local rights to pursue desalination.) What are you doing on technology issues, such as pharmaceuticals passing back through the membrane? (We are a "policy" group – not technical.) What about energy costs? (Working on efficiencies and use of renewable energy.) Regarding the "no growth" issue, is there any distinction on emergency supply? (Santa Barbara is drought only – not sure about opposition.)

7. **Collaborative Watershed Stewardship.** Dennis Bowker provided a handout and PowerPoint entitled "Watershed Management – Context, Community, Collaboration" and began with a description of the roots of watershed management in hydrology, biology, geology and sociology and the need to consider each in the context of the others. Dennis then emphasized the complexity of watersheds, presented some definitions and described a watershed approach which includes a fundamental set of principles and that the water quality of streams and rivers are expressions of watershed conditions. He then provided an "elevation of fitness" graphic to illustrate a dancing landscape of changes over time. Dennis introduced the concept of "The Edge of Chaos" and the link with complex co-adaptive systems and the relation to nested hierarchies. He then used the concept of homeostasis to explain watershed "conditions" and the need to manage our activities rather than assume intrinsically good or bad conditions for watersheds. Dennis then provided a definition for watershed management and the "interest based" approach. He also referenced Aldo Leopold and his "relationships" that define a river as an opportunity to discuss the importance of "ratios." He presented a ratio – our options/their options = results as a way to emphasize collaboration and present disciplined inquiry from the perspectives of both the scientific community and the political community. Dennis used the Napa River as an example of a different model of "understanding rivers," which led to the "Living River Strategy." He then described "Program Flow" of data analysis, information, context, and actionable knowledge filtered through different types of inquiry and the results based on a "double loop" of assessment and adjustment. Dennis then explained the elements of Socio-Ecological System Management (the assessment and tracking of physical and biological inventories and desired conditions) and the Strategic Planning Process (mission, vision, strategy, actions, reflection) and the constant monitoring between actions and reflection. He then presented the challenges to effective collaboration: history, truth, and addiction to problem solving and provided examples of each. He described conventional approaches to problem solving and noted how the term "flood control" had evolved to "flood plain management." Dennis ended with an example of reframing a problem, placing an emphasis on adaptive management, and the need to answer a series of questions specific to your watershed.

8. **Project Approval.** Harry used a PowerPoint to present a new project for NBWA Board approval – Napa/Sonoma/Marin LandSmart On-the-Ground Workshop Series for \$25k. Harry provided background on projects approved to date and explained the elements of the proposal. He described recent actions by the Joint Technical Committee (JTC) (i.e., adding a deliverable of brief summaries of the workshops). He noted another project will be presented to the Board on October 3, and that approving all projects endorsed by the JTC may require using up to \$5k of our contingency funds for this fiscal year. The NBWA Board Members unanimously approved the Napa/Sonoma/Marin LandSmart Workshops proposal for funding.

9. **BAIRWMP – 2013 Plan – Adoption Resolution.** Harry used a PowerPoint to provide background on the adoption resolution and described the minor updates and implications. The NBWA Board Members unanimously approved the Resolution for the Chair's signature on behalf of the Board.

10. **Items of Interest.**

- * "Sea Level Rise and the Corte Madera Baylands," by Sarah Richmond of the Bay Conservation and Development Commission – Monday, Sept. 8 at 7:00 p.m. at the Corte Madera Community Center, 498 Tamalpais Drive

11. **Items for Next Agenda.**

- * NBWRA Update – Chuck Weir
- * Water in Uncertain Future Climate – Bob Dickinson, Argos
- * Project Approval

Jack Gibson, Chair, adjourned the meeting at 11:22 a.m.

SUBJECT TO BOARD APPROVAL
Submitted By: Elizabeth O. Preim-Rohtla
Assistant to the Executive Director

NEXT MEETING INFORMATION:

October 3 – Petaluma (Lucchesi) Community Ctr., 320 N. McDowell Blvd., Petaluma, CA 94954-Conf. Rm. 2
November 7 – Novato Sanitary District, 500 Davidson Street, Novato, CA 94945

2015 NBWA Board of Directors' Meetings Schedule

All meetings are held on Fridays from 9:30 a.m. to 11:30 a.m.

January 9 – Marin Community Foundation, 5 Hamilton Landing, Suite 200, Novato, CA 94949

February 6 – Petaluma (Lucchesi) Community Ctr., 320 N. McDowell Blvd., Petaluma, CA 94954-Conf. Rm. 2

March 6 – Novato Sanitary District, 500 Davidson Street, Novato, CA 94945

April 3 – Napa Location – TBD

May 1 – Marin Community Foundation, 5 Hamilton Landing, Suite 200, Novato, CA 94949

June 5 – Novato Sanitary District, 500 Davidson Street, Novato, CA 94945

July 10 – Marin Community Foundation, 5 Hamilton Landing, Suite 200, Novato, CA 94949

No August Meeting

September 11 – Novato Sanitary District, 500 Davidson Street, Novato, CA 94945

October 2 – Petaluma (Lucchesi) Community Ctr., 320 N. McDowell Blvd., Petaluma, CA 94954-Conf. Rm. 2

November 6 – Novato Sanitary District, 500 Davidson Street, Novato, CA 94945

December 4 – Petaluma (Lucchesi) Community Ctr., 320 N. McDowell Blvd., Petaluma, CA 94954-Conf. Rm. 2

16

DISBURSEMENTS - DATED SEPTEMBER 18, 2014

Date Prepared: 9/16/14

The following demands made against the District are listed for approval and authorization for payment in accordance with Section 31302 of the California Water Code, being a part of the California Water District Law:

Seq	Payable To	For	Amount
1	Alpha Analytical Labs	Lab Testing	\$2,653.00
2	Anand, Joginder	Novato "Cash for Grass" Program	110.00
3	AT&T	Telephone Charges: Main Line Rollover	154.47
4	Beasely, Betty	Novato "Washer Rebate" Program	50.00
5	Benson, Laura	Novato "Pool Cover Rebate" Program	50.00
6	California Water Service	July-Sept Water Service (0 ccf)	135.48
7	California Pavement	Refund Security Deposit on Hydrant Meter Less Final Bill	754.75
8	Cal Test	Lab Testing	35.00
9	Cinquini & Passarino	Surveying Services on South Novato Blvd Waterline Replacement (Balance Remaining on Contract \$23,830)	4,033.00
10	Clark, Robert E.	Exp Reimb: Annual Dues for Rotary (7/14-6/15) (Budget \$130)	130.00
11	Cummings Trucking	Sand (32 yds) (\$1,853) & Rock (32 yds)	2,901.96
12	CWEA	CWEA Membership Renewal (10/14-10/15) (Budget \$150) (Bena)	156.00
13	Dell Computers	Hard Drives for Archiving Large Files (2)	463.23
14	Diggs, James	Retiree Exp Reimb (Sept Health Ins)	1,017.68
15	Ditch Witch Equipment	Pneumatic Piercing Tool for Installing Water Services (Budget \$6,000)	3,709.59
16		Vision Reimbursement	126.00
17	Grainger	Batteries for Gate Openers (2)	43.79
18		Cafeteria Plan: Uninsured Medical Reimbursement	25.00

Seq	Payable To	For	Amount
19	Hach	Reagent (\$217) & Alkaline Cyanide Reagent (STP) (2)	255.55
20	High-Purity Standards	Ion Chromatography Standards (5) (Lab)	234.74
21	Howe, Michael	Novato "Washer Rebate" Program	50.00
22	Hune, Robert	Novato "Toilet Rebate" Program	100.00
23	International Dioxide	Lamp Module for Chlorine Dioxide Generator (STP)	735.52
24	John's Plumbing & Sewer Service	Labor to Replace Water Heater Under Warranty (25 Giacomini Rd)	445.00
25	John's Dairy Equip & Supply	Chlorine Tablets (200 lbs) (STP)	688.48
26	Kemira Water Solutions	Ferric Chloride (10 tons) (STP)	5,227.20
27		Cafeteria Plan: Uninsured Medical Reimbursement	5.00
28	Kullmann, Ute	Novato "Washer Rebate" Program	50.00
29	Lincoln Life	Deferred Compensation PPE 9/15/14	12,820.87
30	Marin County Treasurer	Semi Annual PRE-1 Interest	1,800.00
31	Marin County Ford	Radiator Hose Outlet, Exhaust Sensor, Thermostat Assembly, Lower Radiator Hose (\$84), Brake Rotor (\$170), Oil Seal, Brake Shoe Kit (\$136) ('08 F350), Tail Lights, Sunvisor Bracket, Seat Track, Tailgate Gap Cover (\$74), Tie Rod End (\$62), Track Bar (\$128) ('08 F350) & Rear Axle Oil (\$72)	1,080.70
32	Matchette, Tim	Retiree Exp Reimb (Sept Health Ins)	349.23
33	McLellan, WK	Misc Paving	3,679.69
34	Mendez, Erick	Novato "Cash for Grass" Program	400.00
35	Microtech Scientific	Lauryl Sulfate Broth (Lab)	179.80
36	Moore, Doug	Retiree Exp Reimb (Sept Health Ins)	943.40
37	Nationwide Retirement Solution	Deferred Compensation PPE 9/15/14	1,025.00

Seq	Payable To	For	Amount
38	North Bay Watershed Assoc.	FY14/15 Dues (Watershed Stewardship Plans) Budget (\$6,650)	6,215.71
39	Office Depot	Desk Chairs (Manzoni, Pecunia & Young)	864.26
40	Opperman & Son	Tilt Cylinder Eye ('07 Trailmax Trailer)	116.87
41	Pace Supply	Elbows (8) (\$1,094), Bolts (20), Hydrant (\$1,371) & Hydrant Bury (5) (\$1,576)	4,081.60
42	Petranto, Nancy	Novato "Toilet Rebate" UTET Program	300.00
43	PG&E	Power: Bldg/Yard (\$4,294), Rectifier/Controls (\$481), Pumping (\$33,066), Treatment (\$98) & Other (\$119)	38,058.90
44	Pini Hardware	Couplings, Union, Ball Valves, Elbow, Tee, Bolts, Nuts for Fire Service (\$41), Angle Stop, Valve, Extension Cord (50'), Staples, Hardware, Potting Soil (2 cu ft) & Rectangle Container (1.9 L)	155.41
45	Ramudo, Pablo	Exp Reimb: Mileage to BAWWA Event on 8/21/14	67.20
46		Cafeteria Plan: Uninsured Medical & Childcare Reimbursement	1,454.32
47	Rankin, Samuel	Novato "Washer Rebate" Program	50.00
48	Red Wing Shoe Store	Safety Boots (Reed)	152.40
49	Roberts, Renee	Retiree Exp Reimb (Sept Health Ins)	349.23
50	Scheller, Paul	Replacement Check - Original Lost in Mail (Novato Toilet Rebate)	100.00
51	Staples Advantage	Self Inking Stamp (\$49), Calculator Ribbon (10) (\$60), Copy Paper (40 reams) (\$149), Desk Lamp, Post-its (30), Clasp Env (400) & Light Bulb	315.36
52	State Water Resources Control Board	Clean Drinking Water State Revolving Fund Loan Principal & Interest RW N Segment 2	116,128.88
53	Stroope, Marsha	Novato "Cash for Grass" Program	210.00
54	United Rentals	Wacker Repair Parts	400.05

Seq	Payable To	For	Amount
55	United Parcel Service	Delivery Services: Sent AEEP Reaches A-D/MSN B3 CD Sketches, Returned Analytical Equipment & Media Return (Lab)	16.91
56	USA BlueBook	Recorder Charts (2)	106.83
57	US Bank	August Safekeeping Fee: Treasury Securities	159.25
58	Vali Cooper & Associates	Construction Management Services for AEEP Reaches A-D MSN B3 Project (Balance Remaining on Contract \$1,039,451)	94,147.28
TOTAL DISBURSEMENTS			<u>\$310,069.59</u>

The foregoing payroll and accounts payable vouchers totaling \$310,069.59 are hereby approved and authorized for payment.

 9/15/14
 Auditor-Controller Date

 9/15/2014
 General Manager Date

DISBURSEMENTS - DATED SEPTEMBER 25, 2014

Date Prepared: 9/30/14

The following demands made against the District are listed for approval and authorization for payment in accordance with Section 31302 of the California Water Code, being a part of the California Water District Law:


Seq	Payable To	For	Amount
P/R*	Employees	Net Payroll PPE 9/15/14	\$119,630.20
EFT*	US Bank	Federal & FICA Taxes PPE 9/15/14	50,312.17
EFT*	State of California	State Taxes & SDI PPE 9/15/14	8,774.54
1	Allied Heating & Air Conditioning	Quarterly HVAC Maintenance (6/1/14-8/31/14)	384.80
2	All Star Rents	Air Compressor Rental (1 Day)	122.69
3	Alpha Analytical Labs	Lab Testing	240.00
4	American Family Life Ins	Oct Employee Contribution for Accident, Disability & Cancer Insurance	4,366.65
5	Andre, Liza	Novato "Cash for Grass" Program	400.00
6	AT&T	Telephone Charges: Leased Lines	63.30
7	Bank of Marin	Bank of Marin Loan Principal & Interest (Pymt 35 of 240)	46,066.67
8	California Department of Public Health	T4 Renewal Certification (Stompe) (10/14-2/16) (Budget \$0)	105.00
9	California Pavement	Refund Overpayment on Closed Account	30.27
10	CalPERS Retirement System	Pension Contribution PPE 9/15/14	41,211.32
11	Clark, Jeff	Novato "Cash for Grass" Program	200.00
12	Cummings Trucking	Rock (65 yds)	2,399.51
13	Dowd, Melissa	Refund Overpayment on Closed Account	42.54
14	Duvall, William	Refund Security Deposit on Hyd Meter Less Final Bill	480.53
15	Charles Z. Fedak	Progress Billing on FY14 Financial Audit (Balance Remaining on Contract \$3,300)	5,000.00


Seq	Payable To	For	Amount
16	Fisher Scientific	Buffers (4) (\$152), Reagents (\$129), Sample Bottles (24) (\$64), Beakers (12), pH Probe (\$376), Hydrochloric Acid (2.5 L) (\$73), Scoopulas (6), Pipette (400) (\$78) & Chlorine (200)	981.94
17	Forensic Analytical	Lab Testing	200.00
18	Goodpaster, Stacie	Exp Reimb: AWWA Conference Registration in Reno 10/19-10/23/14	515.00
19		Cafeteria Plan: Uninsured Medical Reimbursement	180.18
20	Grainger	PVC Ball Socket (2), Tees (2), Elbow, 1/2" PVC Pipe (8'), Eye Wash Head & Socket Set (\$68)	159.52
21	Groeniger	Bushings (2), Coupling Restrainers (3) (\$2,074) & PVC Pipe (100') (\$298)	2,379.99
22	InfoSend	August Processing Fee for Water Bills (\$1,353), Postage (\$3,912) & Add Drought Surcharge Message to West Marin Bills (\$300)	5,564.66
23	Jackler, Marie	Novato "Washer Rebate" Program	50.00
24	LeMay, Tom	Novato "Toilet Rebate" Program	100.00
25	Macdonald Architects	Professional Services: Lynwood Pump Station	321.90
26	Martin, Beth	Novato "Toilet Rebate" Program	100.00
27	McAghon, Andrew	Repair Retaining Wall @ 39 Shields Lane	470.00
28	McLellan, WK	Misc Paving	1,819.00
29		Cafeteria Plan: Uninsured Medical Reimbursement	607.00
30	Meenan, Michael	Novato "Washer Rebate" Program	50.00
31	Miller Pacific Engineering	Geotechnical Services: Compaction Tests on AEEP Pipeline (\$761) & 297 Crest Road	1,014.10
32	Mitchell, Russ & Associates	Perform Recycled Water On-site Retrofit Design Work (Balance Remaining on Contract \$10,940)	650.00
33	Neal, W	Refund Overpayment on Closed Account	58.72

Seq	Payable To	For	Amount
34	Nerviani's Backflow	Backflow Device Testing (7)	630.00
35	Novato, City of	Annual Encroachment Permit (\$2,770) & Street Excavating Moratorium Fee (\$500) (32 San Domingo)	3,270.00
36	Novato Disposal Service	August Trash Removal	419.94
37	Pace Supply	Connection Rings (34), Hymax Couplings (8) (\$1,487), Flanges (3), Hydrant Bury (2) (\$664), Connection Ring (\$185) & Couplings (2)	2,800.93
38	Parkinson Accounting Systems	August Accounting Support	97.50
39	Petro Tech	Replacement Fuel Pump (Yard)	1,373.58
40	Phillips Transportation	Hazardous Waste Disposal for WQ Lab & STP	100.00
41		Cafeteria Plan: Childcare Reimbursement	208.33
42		Cafeteria Plan: Uninsured Medical & Childcare Reimbursement	620.00
43	Sequoia Safety Supply	Brief Relief Urine Bags (200) (\$462), Safety Glasses (24) (\$80), Anti-Fog Wipes (200) & Sunscreen Toilettes (100) (\$56)	614.72
44	Shirrell Consulting Services	Aug Dental Expense	8,542.20
45	Shoemaker Structural	Welding Services (McClay Rd)	250.00
46	Smith, Blake	Novato "Washer Rebate" Program	50.00
47	Sonoma County Water Agency	August Contract Water	487,732.43
48	Spence Melinda	Novato "Toilet Rebate" Program	98.00
49	TelePacific	Telephone Charges - Voice Lines	439.43
50	Township Building Services	Aug Janitorial Services (\$1,589) & Bathroom Supplies	1,813.21
51		Vision Reimbursement	133.97
52	Verizon California	Telephone Charges: Leased Lines	289.43
53	Vogee, Kim	Novato "Cash for Grass" Program	150.00

Seq	Payable To	For	Amount
54	Wiley Price & Radulovich	Domestic Partner & Accommodation Issues	134.50
55	Winzer	Nuts, Bolts, Washers, Wire Ties & Screws for Shop	349.36
TOTAL DISBURSEMENTS			<u>349.36</u> <u>\$805,169.73</u>

The foregoing payroll and accounts payable vouchers totaling \$805,169.73 are hereby approved and authorized for payment.

 9/22/14
 Auditor-Controller Date

 9/23/2014
 General Manager Date

DISBURSEMENTS - DATED OCTOBER 2, 2014

Date Prepared: 9/30/14

The following demands made against the District are listed for approval and authorization for payment in accordance with Section 31302 of the California Water Code, being a part of the California Water District Law:

<u>Seq</u>	<u>Payable To</u>	<u>For</u>	<u>Amount</u>
47983*	State Water Resources Control	Application Fee for the AEEP Reaches A-D MSN-BE Storm Water Permit	\$1,630.00
1	Alpha Analytical Labs	Lab Testing (West Marin)	325.00
2	Athens Administrators	Oct Workers' Comp Admin Fee	1,000.00
3	AT&T	Telephone Charges: SCADA Lines	152.59
4	Austin, Marilyn	Novato "Cash for Grass" Program	280.00
5	Axelsen, Sjoukje	Novato "Toilet Rebate" Program	100.00
6	Baker, Jack	September Director's Fee	400.00
7	Bay Area Barricade Service	Spray Chalk (48-17oz cans) (\$194) & 18" Traffic Cones (6)	239.48
8	Branom Instrument	Replacement Level Probe (STP)	2,148.78
9	Brown, Chris	Novato "Washer Rebate" Program	50.00
10	California State Disbursement	Wage Assignment Order	2,037.00
11	CalPERS	Health Insurance Premium (Employees \$52,271, Retirees \$9,786 & Employee Contrib \$9,891)	71,948.45
12	Cal Test	Lab Testing	35.00
13	Caughie, Marguerite	Novato "Cash for Grass" Program	225.00
14		Vision Reimbursement	378.00
15	Chick-Fil-A	Refund Overpayment on Open Account	215.79


Seq	Payable To	For	Amount
16	Core Utilities	Consulting Services: August IT Support (\$5,000), SCADA Weekly Average for Website (\$500), Program Replacement RTU for Tahiti Way Lift Station (\$450), Program New Radios & Upgrade Firmware in Existing Radios (\$3,425) & Radio Telemetry Program, Drought Surcharge Coding (\$1,200), Tier Use Table Update (\$125) & Modify Website Water Use Chart (\$200), Add Average Daily Use to Website (\$675)	11,425.00
17	Danford, Craig	Novato "Washer Rebate" Program	50.00
18	Environmental Express	Filters (1,000) (Lab)	325.01
19	Fraites, Rick	September Director's Fee (\$400) & North Bay Watershed Association Meeting on 9/5/14	600.00
20	Garret Medeiros Construction	High Weed Mowing of Sewer Discharge Fields @ O.M.	1,100.00
21	GHD	Engineering Services: NMWD Aqueduct Relocation (Balance Remaining on Contract \$26,544)	1,116.00
22	Giambroni, Jennifer & Jess	Refund Alternative Compliance Reg 15 Deposit	630.00
23	Golden Gate Petroleum	Gasoline (\$3.59/gal) & Diesel (\$3.83/gal)	3,055.06
24	Gordillo, Marina	Novato "Toilet Rebate" Program	100.00
25	Grainger	HVAC Filters (36) (\$442), Parts for RW Facility (\$236), Reducing Tee (RWF), 2" Clamp (RWF) & Insulated Crimpers (4) (\$139)	844.98
26	Gruener, David	Novato "Toilet Rebate" Program (\$200) & Refund Alternative Compliance Reg 15 Deposit (\$630)	830.00
27	Hach	Turbidity Test Tubes (6)	72.82
28	Harris, Jennifer	Novato "Cash for Grass" Program	116.00
29	Integra Chemical	Dechlorination Tablets (420)	1,781.25
30	Irish & Son Welding	Welding Services (Recycled Water South) (Balance Remaining on Contract \$4,235)	480.00


Seq	Payable To	For	Amount
31	Jak Wonderly Photography	Photograph AEEP Reach A-D/MSN B3 Construction Project (Balance Remaining on Contract \$3,601)	761.00
32	King, Emily	Novato "Cash for Grass" Program	390.00
33	KP Promotions	Annual Uniform Order	4,975.44
34	Laurent, John	Novato "Cash for Grass" Program	330.00
35	Lemontt, Jeffrey	Novato "Toilet Rebate" Program	200.00
36	Lincoln Life	Deferred Compensation PPE 9/30/14	12,820.87
37	MacDonald Bolles, Janice	Novato "Cash for Grass" Program	400.00
38	Maltby Electric	Electrical Supplies (\$332) & Signal Wire (500') (\$332)	664.63
39	Marin Conservation League	Co-Sponsor Business Environmental Breakfast. "Proposition 1 – The Water Bond... Yes or No?" on 10/3/14.	250.00
40	McMaster-Carr Supply	RTU Parts	151.08
41	Medina, Susan	West Marin "Washer Rebate" Program	50.00
42	MegaPath	DSL Internet (9/12-10/11)	142.88
43	Mestre, Edward	Novato "Grey Water Rebate" Program	75.00
44	Mutual of Omaha	Oct Group Life Insurance Premium	710.94
45	Nationwide Retirement Solution	Deferred Compensation 9/30/14	1,025.00
46	Nguyen, An	Novato "Cash for Grass" Program	200.00
47	Novato Toyota	Bumper Cover (\$205), Grille & Head Light (\$145) ('09 Toyota Prius)	409.57
48	O'Leary, Imelda	Novato "Toilet Rebate" Program	79.99
49	On Line Resource	Refund Overpayment on Closed Account	126.94
50	Pace Supply	Elbows (20) (\$155), Bushings (6), Adaptors (4) (\$470), Nipples (3), Meter Stops (66) (\$2,926), Tees (5), 36" Dewatering Hand Pump (\$89) & Meter Gaskets (1,000) (\$266)	3,965.95

Seq	Payable To	For	Amount
51	Peterson Trucks	Air, Fuel, Transmission & Engine Filters, Transmission Fluid (\$234) & Tie Rod Assembly (\$189) ('07 Intl)	617.17
52	Petterle, Stephen	September Director's Fee	400.00
53	Phung, Long	Refund Overpayment on Closed Account	126.70
54	Pollack, Linda	Novato "Toilet Rebate" Program	100.00
55	Riekert, Thomas	Novato "Toilet Rebate" Program	300.00
56	Rigney, Roberta	Novato "Toilet Rebate" Program (\$100) & Refund Alternative Compliance Reg 15 Deposit (\$630)	730.00
57		Cafeteria Plan: Uninsured Medical Reimbursement	191.28
58	Rodoni, Dennis	September Director's Fee	400.00
59	Schoonover, John	September Director's Fee Less Deferred	350.00
60	Schwaab	Date Stamp (Eng)	39.70
61	Shell	Tool Fuel (4 gal)	38.99
62	Stompe, Brad	Exp Reimb: Safety Meeting Snacks (3)	38.57
63	Streakwave Wireless	RTU Radio Switch (\$256) (STP), RTU Radio Parts (\$823) & Router for Construction Lunch Room (\$86)	1,165.17
64	Tamagno Green Products	Sludge Removal (108 yds)	2,160.00
65	Thomas Scientific	Safety Gloves (2,000) (\$183) & Petri Dishes (600) (\$180)	363.83
66	Univar	Sodium Hydroxide (6 tons)	1,115.88
67	U.S. Bank	Safety Bravo Awards (20) (Starbucks Gift Cards) (\$200), Barcode Tape (12-4" X 242') (\$146), Negotiation & Teamwork Books (\$35) (McIntyre), Coffee Supplies, Handheld Barcode Reader for Warehouse (\$2,035), Business Lunch (\$157) (DeGabriele) & Birthday Breakfasts (\$91)	2,674.00

Seq	Payable To	For	Amount
68	Verizon California	Telephone Charges: Leased Lines (\$287) & Emergency Service Listing	315.55
69	Verizon Wireless	August CIMIS Station Data Transfer Fee	27.65
70	VWR International	Filters (100) (STP)	159.15
71	Wang, Min	Novato "Washer Rebate" Program	50.00
		TOTAL DISBURSEMENTS	<u>\$142,784.14</u>

The foregoing payroll and accounts payable vouchers totaling \$142,784.14 are hereby approved and authorized for payment.

 9/30/14
 Auditor-Controller Date

 9/30/2014
 General Manager Date

NORTH MARIN WATER DISTRICT CHECK REQUEST

PAYEE RICK FRAITES	DATE <u> / / </u> (TODAY'S DATE)
50 Forrest Rd	AMOUNT: \$200.00
Novato, CA 94947	




I attended the North Bay Watershed Association on 09/05/14
(NAME OF MEETING OR WORKSHOP) (DATE OF MEETING)

and wish to be compensated as provided under the Board Compensation Policy.



SIGNATURE

CHARGE TO: 56001-01-11

<p>DISPOSITION OF CHECK</p> <p><input checked="" type="checkbox"/> MAIL TO PAYEE</p> <p><input type="checkbox"/> HOLD FOR _____</p> <p><input type="checkbox"/> OTHER _____</p> <hr/> <p>APPROVED TO PAY BY _____</p> <p><small>T:\FORMS\CHECK REQUEST FOR BOARD.DOC REV. 0213</small></p>	<table border="1" style="width: 100%; border-collapse: collapse;"> <tr> <td style="width: 20%; padding: 2px;">Prepared By</td> <td style="width: 20%; padding: 2px;">Accounting Review</td> <td style="width: 20%; padding: 2px;">POST DATE</td> <td style="width: 40%; padding: 2px;">Vendor No. FRAI02</td> <td rowspan="2" style="width: 20%; text-align: center; vertical-align: middle;">  </td> </tr> <tr> <td style="height: 20px;"></td> <td style="height: 20px;"></td> <td style="height: 20px;"></td> <td style="height: 20px;"></td> </tr> </table> <table border="1" style="width: 100%; border-collapse: collapse; margin-top: 5px;"> <tr> <th style="width: 30%; padding: 2px;">Invoice Number (CK Req ID)</th> <th style="width: 20%; padding: 2px;">Invoice (CK Req) Date</th> <th style="width: 50%; padding: 2px;">Invoice (CK Req) Amount</th> </tr> <tr> <td style="padding: 2px;">CKRQ</td> <td style="padding: 2px;"></td> <td style="text-align: right; padding: 2px;">\$200.00</td> </tr> </table> <table border="1" style="width: 100%; border-collapse: collapse; margin-top: 5px;"> <tr> <th style="width: 100%; padding: 2px;">NMWD Comment</th> </tr> <tr><td style="height: 20px;"></td></tr> <tr><td style="height: 20px;"></td></tr> <tr><td style="height: 20px;"></td></tr> <tr><td style="height: 20px;"></td></tr> </table> <table border="1" style="width: 100%; border-collapse: collapse; margin-top: 5px;"> <thead> <tr> <th style="width: 40%; padding: 2px;">Job Number</th> <th style="width: 30%; padding: 2px;">GL Account</th> <th style="width: 30%; padding: 2px;">Amount</th> </tr> </thead> <tbody> <tr> <td style="padding: 2px;"></td> <td style="text-align: center; padding: 2px;">56001-01-11</td> <td style="text-align: right; padding: 2px;">\$200.00</td> </tr> <tr><td style="padding: 2px;"></td><td style="padding: 2px;"></td><td style="padding: 2px;"></td></tr> <tr><td style="padding: 2px;"></td><td style="padding: 2px;"></td><td style="padding: 2px;"></td></tr> <tr><td style="padding: 2px;"></td><td style="padding: 2px;"></td><td style="padding: 2px;"></td></tr> <tr> <td colspan="2" style="text-align: right; padding: 2px;">TOTAL</td> <td style="text-align: right; padding: 2px;">\$200.00</td> </tr> </tbody> </table>	Prepared By	Accounting Review	POST DATE	Vendor No. FRAI02						Invoice Number (CK Req ID)	Invoice (CK Req) Date	Invoice (CK Req) Amount	CKRQ		\$200.00	NMWD Comment					Job Number	GL Account	Amount		56001-01-11	\$200.00										TOTAL		\$200.00
Prepared By	Accounting Review	POST DATE	Vendor No. FRAI02																																				
Invoice Number (CK Req ID)	Invoice (CK Req) Date	Invoice (CK Req) Amount																																					
CKRQ		\$200.00																																					
NMWD Comment																																							
Job Number	GL Account	Amount																																					
	56001-01-11	\$200.00																																					
TOTAL		\$200.00																																					

Free Electronics Recycling
LAPTOP REPAIR SPECIALISTS
 www.renewcomputers.com
415-457-8801
 CALic #100888 • 446 Du Bois St., San Rafael 94901

Notices

person(s) is (are) business
 100 Shoreline Hwy,
 Mill Valley, CA 94941.
 is conducted by a
 ership: 01. Montgom-
 Inc., 100 Shoreline
 08, Mill Valley, CA
 Michael R. Tiro, 100
 y, Ste. 1608, Mill
 94941. This statement
 in the County Clerk
 unty on August 20,
 O. Lobato, Deputy,
 the Point Reyes Light
 umber 4, 11, 18, 25,

Business Name
 File No. 2014135552.
 ng person(s) is (are)
 Run Naturally, 155C
 ve., Mill Valley, CA
 business is conducted
 dual: Samuel L. Webb
 ood Ave., Mill Valley,
 This statement was
 he County Clerk

of Marin County on August
 26, 2014, signed C. Babbidge,
 Deputy. Published in the Point
 Reyes Light August September 4,
 11, 18, 25, 2014.

CORRECTED:
Fictitious Business Name
Statement. File No. 135398. The
 following person(s) is (are) busi-
 ness as: Tungsten Design, 2165
 Francisco Blvd East, Ste G, San
 Rafael, CA 94901. This business
 is conducted by a corporation:
 Peter Mymer Associates Inc., 2165
 Francisco Blvd East, Ste G, San
 Rafael, CA 94901. This statement
 was filed with the County Clerk
 of Marin County on August 4,
 2014, signed, J. Mannion, Deputy.
 Published in the Point Reyes Light
 September 11, 18, 25, October
 2, 2014.

Fictitious Business Name State-
ment. File No. 135612. The follow-
 ing person(s) is (are) business as:

Patrick's Pool Service, 9355 Old
 Redwood Hwy, Penngrove, CA
 94951. This business is conducted
 by an individual: Patrick Andrew
 Dahl, 9355 Old Redwood Hwy.,
 Penngrove, CA 94951. This

statement was filed with the
 County Clerk of Marin County
 on September 4, 2014, signed, C.
 Babbidge, Deputy. Published in
 the Point Reyes Light September
 11, 18, 25, October 2, 2014.

Notice:

Salinity intrusion into the Point Reyes well supply
 serving the West Marin communities of Point Reyes,
 Olema, Inverness Park, and Paradise Ranch Estates
 has occurred beginning on September 16, 2014 and
 has caused sodium levels to increase from back-
 ground levels of 15-30 milligrams per Liter (mg/L).
 The table below lists the most recent concentrations
 for sodium in the West Marin water supply:

Date	Sodium	Units
9/16/14	61	mg/L

*milligrams per liter

Chris DeGabriele, General Manager
 North Marin Water District

Salinity notice
 9/18/14

Pt. Reyes Light

MAC/APPLE SUPPORT

Steve Bowers is back and he's doing Mac. Phone: 390.2427 (Local Number) Macintosh Support Only. Sorry, I don't do Windows anymore. (m)

Home: 415-897-2940 Cell: 415-328-5037

BEAR BOTTOM FARMS

A Quality Firewood Co. Almond & Walnut Renewed Resource Woods Free Kindling w/ mention of ad Visa/MC Open Year Round 1(800) 670-BEAR • 510-237-2624

Stocking and working cash register. Part of full time. Must be available weekends. 415.868.1923 or stop by the store and ask for Sergio.

Notices

filed with the Marin County Clerk of Marin County on September 15, 2014, signed, C. Sanchez, Deputy. Published in the Point Reyes Light September 25, October 2, 9, 16, 2014.

Place, Tahoe City, CA 96145. This statement was filed with the County Clerk of Marin County on September 16, 2014, signed, C. Babbidge, Deputy. Published in the Point

Reyes Light September 25, October 2, 9, 16, 2014.

s. Name State-620. The following person(s) is (are) business as: Dipsea Gardens, 3255 Shoreline Hwy, Sausalito, CA 94965. This business is conducted by a married couple: 01: Elly Drosihn, 23 Woodstock Ct., San Rafael, CA 94903, 02: Joe Drosihn, 23 Woodstock Ct., San Rafael, CA 94903. This statement was filed with the County Clerk of Marin County on September 17, 2014, signed, C. Babbidge, Deputy. Published in the Point Reyes Light September 25, October 2, 9, 16, 2014.

ss Name State-14135652. The following person(s) is (are) business as: Marin Golf Clinic. This business is conducted by an individual: Dina J. Morrison D.C., 1766 Trapper

Notice:

Salinity intrusion into the Point Reyes well supply serving the West Marin communities of Point Reyes, Olema, Inverness Park, and Paradise Ranch Estates has occurred beginning on September 16, 2014 and has caused sodium levels to increase from background levels of 15-30 milligrams per Liter (mg/L). The table below lists the most recent concentrations for sodium in the West Marin water supply:

Date	Chloride	Sodium	Units
9/23/14	180	62	mg/L
9/16/14	260	61	mg/L

*milligrams per liter

Chris DeGabriele, General Manager North Marin Water District

Salinity Notice Pt Reyes Light 9/23/14



**NORTH MARIN
WATER DISTRICT**

September 18, 2014

999 Rush Creek Place
P.O. Box 146
Novato, CA 94948

PHONE
415.897.4133

FAX
415.892.8043

EMAIL
info@nmwd.com

WEB
www.nmwd.com

James Raives, Sr. Open Space Planner
Marin County Parks
3501 Civic Center Drive, Suite 260
San Rafael, CA 94903

Re: Notice of Availability of Re-circulated Draft Tiered Program Environmental Impact Report for the Marin County Open Space District's Revised Road and Trail Management Plan

Dear Mr. Raives:

Thank you for the opportunity to comment on the subject Road and Trail Management Plan and the Draft Tiered Program EIR.

North Marin Water District has reviewed the Plan and DEIR. We are happy to see the special use policies included especially Policy SP-1: Lease/License/Other Form of Approval Required for Land Management or Utility Activities, on page 4-18 of the Draft Road and Trail Management Plan. We understand this policy is consistent with the proposed Non-Conforming Use Policy previously discussed with MCOSD staff and documented by the June 4, 2013 letter from Ron Miska, Deputy Director. That letter referenced two proposed NMWD pipeline projects that would affect property owned by MCOSD. One within the Mt. Burdell Open Space Preserve and another across the Indian Valley Open Space Preserve. These two pipeline projects continue to be included in the NMWD Water System Master Plan. The permitting phase for the pipeline project located in the Mt. Burdell Open Space Preserve is scheduled to begin this winter with construction currently scheduled in FY2015/16. The pipeline project in the Indian Valley Open Space Preserve would be constructed subsequent to the Mt. Burdell pipeline.

NMWD and MCOSD have a long history of cooperation including the 1971 Agreement for Development, Maintenance and Operation of Stafford Lake Park and the 1996 Joint Powers Agreement for MCOSD Management of Public Access on NMWD Watershed Lands. This cooperative arrangement has been beneficial both to the public for use of these publicly owned lands and economically for MCOSD and NMWD.

NMWD has existing facilities and facility/access easements in the Ignacio Valley, Pacheco Valley, Loma Verde (Region 3); and Mount Burdell and Verissimo Hills (Region 4) Open Space Preserves. We welcome the opportunity to participate in the Road and Trail Decision Making Process for these areas to insure NMWD water service facilities remain reliably maintained in those vicinities while accommodating public access.

Sincerely,

Chris DeGabriele
General Manager

CD/kly
t:\gm\2014 misc\mcosd ltr 91814.doc

Changes to water releases from Lake Mendocino helping

BY MARY CALLAHAN THE PRESS DEMOCRAT on September 21, 2014, 4:57PM 09/21/2014

A change in releases at Lake Mendocino is helping water suppliers hold back precious reserves as the region's dry spell wears on and threatens to cut historically low reservoir stores to critical levels.

The new protocol could prevent as much as 5,000 acre feet of water — one-sixth of Lake Mendocino's current supply — from slipping down the Russian River before the end of November, an official with the Mendocino County Russian River Flood Control and Water Conservation Improvement District said.

"Five thousand acre feet is going to be about what we used for the entire year this year, so it's a meaningful amount for us," the district's general manager, Sean White, said. "It's our whole annual budget."

Savings projections supplied by the Sonoma County Water Agency were closer to 3,600 acre feet, with the potential for salmon migrating upstream triggering additional releases after Nov. 1.

But White said the effort — preserving about 100 acre feet a day — "is definitely going to make a difference."

"I would have liked more, earlier, but I'll take what I can get," he said.

Not everyone will notice reduced river volumes, especially along the lower Russian River south of Healdsburg and the river's confluence with Dry Creek, where water from Lake Sonoma flows in.

But north from there, it's pretty clear the water level is lower and the river narrowing because of it, said Larry Laba, owner of SOAR Inflatables and Russian River Adventures in Healdsburg.

"We've been watching it go down," Laba said, "both online as well as onshore."

State water regulators approved the reduction in Lake Mendocino releases in late August. The action came in response to requests from White's district, which holds rights to 8,000 acre feet of water in Lake Mendocino, and the Sonoma County Water Agency, which supplies about 600,000 customers in Sonoma County and parts of northern Marin County.

The two agencies operate under permits from the state Water Resources Control Board, governed largely by a 1986 regime dictating how much water needs to be in the river at different times of year.

The two districts sought the change this fall after projections made clear that, without reduced releases or additional rain, water levels in Lake Mendocino would drop to about 20,000 acre feet by Nov. 1, depleting carryover reserves that might be needed in the event of another dry winter and creating "serious impacts to human health and welfare," as well as aquatic wildlife, and permanent crop loss.

The decision to grant the request was made by officials with the state water board, which regulates river flows in a manner designed to meet consumer demand and ensure optimal habitats for fish, particularly coho and chinook salmon and steelhead trout. All three species are listed as threatened or endangered under the federal Endangered Species Act.

Managing flows is a delicate dance, dependent in part on weather forecasts, projected demand on the part of downstream consumers, calculations of how long it takes release changes to register downstream, and how water from Lake Sonoma via Dry Creek might offset shifts in outflow from Lake Mendocino.

Lake Sonoma, a much larger reservoir than Lake Mendocino, has a more plentiful water supply, for instance. But releases are limited because of concerns about ensuring flow rates in Dry Creek are kept low, which is optimal for juvenile salmon.

But the state board approved petitions filed by the two water agencies in mid-August seeking permission to release less water from Lake Mendocino even if it meant reduced flows in the Russian River. Permission was granted Aug. 25, effective immediately.

A spokeswoman for the Sonoma County Water Agency, Ann DuBay, credited the shift in dam releases, in part, with Lake Mendocino's current storage of just more than 30,000 acre feet, though conservation efforts and weather also played roles. That's about a quarter of its water supply capacity.

The agency's staff had projected storage of 26,545 acre feet by last week, without the change in protocols. The agency predicts 3,600 acre feet will be conserved by Nov. 1, DuBay said.

Lake Sonoma currently holds about 151,000 acre feet of water, or about 61 percent of its supply capacity.

An acre foot — enough to cover a football field about a foot deep in water — used to be said to be enough to supply a family of four for a year, though of course that would depend on if the family had lawns to irrigate or was conserving water because of drought, as most Californians are being asked.

The approval authorizes upper river flows, between Ukiah and Healdsburg, to be cut by a third — from an average 75 cubic feet per second to 50 cubic feet per second. In the lower Russian River, between Dry Creek and Jenner, the approval permitted the average flow rate to drop from 85 to 60 cfs.

White said he would have preferred to see the state board authorize a cut in upper river flows to 25 cubic feet, though he did not believe the Sonoma County Water Agency or the state would have supported that drastic a drop.

"This year is critically dry by any measure," White said.

"It's grim," said Judy Hatch, a trustee with the Mendocino County water district, who took a drive to the lake on Friday to see how it looks. "Today, when we went out there, it made my stomach hurt."

You can reach Staff Writer Mary Callahan at 521-5249 or mary.callahan@pressdemocrat.com.

A change in releases at Lake Mendocino is helping water suppliers hold back precious reserves as the region's dry spell wears on and threatens to cut historically low reservoir stores to critical levels.

The new protocol could prevent as much as 5,000 acre feet of water — one-sixth of Lake Mendocino's current supply — from slipping down the Russian River before the end of November, an official with the Mendocino County Russian River Flood Control and Water Conservation Improvement District said.

"Five thousand acre feet is going to be about what we used for the entire year this year, so it's a meaningful

Big thumbs up for Warm Springs Dam

BY MARY CALLAHAN THE PRESS DEMOCRAT on September 24, 2014, 6:27PM 09/24/2014

LAKE SONOMA – It was mostly quiet Wednesday in the bowels of Warm Springs Dam but for the distant roar of water as a team of engineers aboard a 3½-ton flatbed vehicle entered the concrete outlet tunnel.

A swift current flowed around the vehicle's four huge tires, though the release of water had been reduced by half to accommodate the dam's routine, two-day examination.

Standing high enough aboard the metal vehicle that their hard hats scraped some of the lime and calcium stalactites hanging from the curved ceiling 14½ feet above the tunnel's inundated floor, the half-dozen Army Corps of Engineers personnel harnessed to the cart's railing looked more like miners than engineering types as they started the 2,400-foot trip through the tube.

If there is indeed substantial rain this winter, as surely everyone in California must hope, Warm Springs Dam appears ready for it.

But for a sticky valve requiring routine maintenance, inspectors of varied specialties gave the thumbs up at the close of the annual inspection, which is designed to uncover any structural, mechanical or electrical deficiencies that might prevent the dam from fulfilling its flood-control function in the event heavy rains return.

Having gone several years without the strain of holding back substantial rainfall in Lake Sonoma, the dam must nonetheless undergo yearly assessment to "identify any last-minute repairs we need to do before flood season," said Mike Dillabough, chief of operations and readiness for the Army Corps' San Francisco District.

Inspectors started Tuesday by walking the earthen dam built across Dry Creek to create the lake in 1983, searching for signs of seepage, burrowing rodents or other signs of wear and tear that might signal structural problems in the compacted earth that supports the inner, impermeable core of the dam.

Specialized crews also descended 300 feet into the dam tower to ensure the inner mechanical and electrical works that govern dam releases were in proper working order. There are 390 different instruments used in dam operations, Dillabough said.

Workers also inspected the concrete spillway that would allow the escape of lake overflow if there was a catastrophic flood and examined the access road for structural integrity.

But it's the trip into the tunnel — albeit a slow one — that may offer the most thrills, beginning with a brief ride dangling below a crane used to lower the specially made vehicle down to the mouth of the tunnel, where the water spills out from Lake Sonoma over a terraced surface designed to slow the current and dilute its energy so it is safe for the fish and birds downstream.

Those on board wear life jackets and body harnesses hooked to the railing of the vehicle, which was designed a decade ago for inspection of the tunnels at both Warm Springs and Coyote Dam, which was built to create Lake Mendocino.

The tunnel inspectors have a monitor with them to ensure the oxygen level is good and carbon monoxide is in check as they enter the dam.

The vehicle, its wheels canted to accommodate the circular shape, has mounted bright lights that illuminate the rounded walls of the tunnel to permit inspection of seams and patchwork and ensure it can withstand high pressure. A special inspection conducted every five years includes measuring the walls for stability down to a thousandth of an inch, Dillabough said.

“Our job,” Dillabough said, “is to make sure this is still working 100 years from now. So, a little tender loving care.”

LAKE SONOMA – It was mostly quiet Wednesday in the bowels of Warm Springs Dam but for the distant roar of water as a team of engineers aboard a 3½-ton flatbed vehicle entered the concrete outlet tunnel.

A swift current flowed around the vehicle’s four huge tires, though the release of water had been reduced by half to accommodate the dam’s routine, two-day examination.

Standing high enough aboard the metal vehicle that their hard hats scraped some of the lime and calcium stalactites hanging from the curved ceiling 14½ feet above the tunnel’s inundated floor, the half-dozen Army Corps of Engineers personnel harnessed to the cart’s railing looked more like miners than engineering types as they started the 2,400-foot trip through the tube.

If there is indeed substantial rain this winter, as surely everyone in California must hope, Warm Springs Dam appears ready for it.

But for a sticky valve requiring routine maintenance, inspectors of varied specialties gave the thumbs up at the close of the annual inspection, which is designed to uncover any structural, mechanical or electrical deficiencies that might prevent the dam from fulfilling its flood-control function in the event heavy rains return.

Having gone several years without the strain of holding back substantial rainfall in Lake Sonoma, the dam must nonetheless undergo yearly assessment to “identify any last-minute repairs we need to do before flood season,” said Mike Dillabough, chief of operations and readiness for the Army Corps’ San Francisco District.

Inspectors started Tuesday by walking the earthen dam built across Dry Creek to create the lake in 1983, searching for signs of seepage, burrowing rodents or other signs of wear and tear that might signal structural problems in the compacted earth that supports the inner, impermeable core of the dam.

Specialized crews also descended 300 feet into the dam tower to ensure the inner mechanical and electrical works that govern dam releases were in proper working order. There are 390 different instruments used in dam operations, Dillabough said.

Workers also inspected the concrete spillway that would allow the escape of lake overflow if there was a catastrophic flood and examined the access road for structural integrity.

But it’s the trip into the tunnel — albeit a slow one — that may offer the most thrills, beginning with a brief ride dangling below a crane used to lower the specially made vehicle down to the mouth of the tunnel, where the water spills out from Lake Sonoma over a terraced surface designed to slow the current and dilute its energy so it is safe for the fish and birds downstream.

Those on board wear life jackets and body harnesses hooked to the railing of the vehicle, which was designed a decade ago for inspection of the tunnels at both Warm Springs and Coyote Dam, which was built to create Lake Mendocino.

The tunnel inspectors have a monitor with them to ensure the oxygen level is good and carbon monoxide is in check as they enter the dam.

The vehicle, its wheels canted to accommodate the circular shape, has mounted bright lights that illuminate the rounded walls of the tunnel to permit inspection of seams and patchwork and ensure it can withstand high pressure. A special inspection conducted every five years includes measuring the walls for stability down to a thousandth of an inch, Dillabough said.

“Our job,” Dillabough said, “is to make sure this is still working 100 years from now. So, a little tender loving care.”



If you own a house in California you must consider a living trust!

Have your trust prepared by an attorney for \$895!

The Law Offices of Howard B. Garey presents a

Free Living Trust Workshop



For additional information
Call 650-373-2006

marinij.com
(http://www.marinij.com)

OPINION (/OPINION)


Weather:
(http://www.marinij.com/weather)

San Rafael, CA | Now: 61°
(http://www.marinij.com/weather) | High: 74°
* (http://www.marinij.com/weather) | Low: 55°
(http://www.marinij.com/weather) | 5-Day Forecast
(http://www.marinij.com/weather)

HOT TOPICS: [Marin rent control? \(http://www.marinij.com/marinnews/ci_26579897/rising-rents-and-opposition-building-spur-discussion-rent/\)](http://www.marinij.com/marinnews/ci_26579897/rising-rents-and-opposition-building-spur-discussion-rent/)

BREAKING NEWS: Live updates - Strike shuts down Larkspur ferry to SF, limits bus service
(http://www.marinij.com/marinnews/ci_26608606)

Close Ad X



LIFE IS FULL OF TOUGH DECISIONS. THIS ISN'T ONE OF THEM.

WATCH VIDEO ▶

Certified Pre-Owned

▶ LOCATE DEALER ▶ WARRANTY ▶ CERTIFICATION ▶ FINANCE

THE BMW **CERTIFIED EDGE** SALES EVENT

1.9% APR

And an up to \$1,500 payment credit on many 2011 and 2012 models.

Marin Voice: California needs Prop. 1 water bond

By Gregory Allen

POSTED: 09/25/2014 05:25:16 PM PDT

4 COMMENTS

I'd argue that the most important and the only resource that we cannot live without is water. Yet, we have pushed water usage to its limits, at least California's water infrastructure is pushed to its very limits.

There are reservoirs all over California. Stafford Lake helps meet the needs of Novato, but has recently gone offline for the year as we wait for the rains to come and fill it again to usable levels.

The people of Novato will now get 100 percent of their water from the Russian River watershed through a pipe system that runs along Highway 101.

How much longer will this agreement work as Sonoma County continues its population growth, increasing the draw of the same water to meet its needs?

Now is the time to lobby state leadership to improve Stafford Lake before the inevitable. Situations and agreements like this are all up and down the state.


In Northern California, Lake Shasta is where the federal Central Valley Project stores its water that is moved down to the Delta-Mendota Canal and to the San Joaquin Valley's millions of farmland acres via the Sacramento River and Delta.

Lake Oroville is where the State Water Project stores its water that is sent down the Sacramento River and Delta to the California Aqueduct to the Southern California coastal plain.

The first claim on this water is to ensure that enough is sent down to the Delta to keep salt water from contaminating the water for the Delta's agriculture and Delta cities in Contra Costa, Solano, Sacramento and San Joaquin counties.

Advertisement

If you own a house in California you must consider a living trust!



Have your trust prepared by an attorney for \$895!

The Law Offices of Howard B. Garey presents a **Free Living Trust Workshop**

Thursday, September 25th, San Ramon Courtyard by Marriott 10:30AM or 1:30PM 18090 San Ramon Valley Boulevard, San Ramon, CA 94583 Free hotel parking

Friday, September 26th, Fremont Fremont Marriott 10:30AM or 1:30PM 46100 Landing Parkway, Fremont, CA 94538 Free hotel parking

Saturday, September 27th, Concord Crowne Plaza 11AM or 2PM 45 John Glen Drive, Concord, CA 94520 Free Hotel Parking

Sunday, September 28th, San Jose Courtyard by Marriott 11AM or 2PM 1727 Technology Drive, San Jose, CA 95110 Free hotel parking

Each workshop lasts approximately 1 1/2 hours.

For additional information
Call 650-373-2006

\$895 includes

- A Living Trust
- A Will
- A Durable Power of Attorney
- An Advance Healthcare Directive
- Plus all transfer documents

NORTHERN CALIFORNIA'S LARGEST HUNTING & FISHING STORE



197 Butcher Rd
Vacaville, CA 95687
(707) 451-1199

GUNS • **FISHING** & OTHER STUFF

The projects are also required to provide cold-water flows for migrating salmon and other endangered fish, and then flows into the bay and ocean.

Senior water rights have the next claim on that water, because their water was taken by those dam and aqueduct projects. Current agreements and settlements ensure that they get 100 percent of their water in normal years and no less than 75 percent in very dry years before any other water is given to other contract holders.

The Central Valley Project Improvement Act, passed by Congress in 1992, allocated water for fish and a set amount for basic needs of wildlife refuges, which is called "Level 2" water. The refuges are entitled to 100 percent of their Level 2 water in most years and 75 percent in very dry years.

Even though their contracts do not allow for any less than 75 percent, January 2014 saw the first time ever that state and federal projects announced a zero-percent allocation for their water supply contractors. This also included Southern California cities and the San Joaquin Valley agriculture. Settlement and exchange contractors were allocated only 40 percent, even though their contracts allow for no less than 75 percent.

Heavy spring rains increased Sacramento Valley contracts to 75 percent and San Joaquin Valley contracts raised to 65 percent.

Having just made the drive from the North Bay to Los Angeles last weekend on Interstate 5, we were shocked to see so many signs asking Congress for more water and the dozens of mature orchards that are drying up because Congress picked losers and winners.

I support Proposition 1, the \$7.5 billion water storage bond. Proposition 1 provides \$2.7 billion in funding for critical water storage projects, \$900 million for groundwater sustainability, \$725 million for water recycling and \$100 million for water conservation.

Yes, it's a huge price tag, but far less than Gov. Jerry Brown's proposal for a \$25 billion water tunnels plan.

Maybe we should wait on that \$75 billion needed for high-speed rail.

Gregory Allen of Novato is a candidate for Marin's seat in the state Assembly. He is a Republican.

Happening Around Marin

News	
------	--

Loading News...

Crawdnews

MOST POPULAR (/POPULAR)

DAY (/POPULAR) HOUR (/POPULAR) NEWS (/POPULAR)
SPORTS (/POPULAR) OP/ED (/POPULAR) A&E (/POPULAR)
EMAIL (/POPULAR)

Corte Madera residents opposed to use of Corte Madera cinema as site for 31 homes
(http://www.marinij.com/marinnews/ci_26602191/corte-madera-residents-opposed-use-corte-madera-cinema?source=most_viewed)

Marin Voice: Prop. 1 prioritizes conservation and climate change
(http://www.marinij.com/opinion/ci_26598536/marin-voice-prop-1-prioritizes-conservation-and-climate?source=most_viewed)

Former Novato fire chief settles lawsuit against district board
(http://www.marinij.com/marinnews/ci_26589459/former-novato-fire-chief-settles-lawsuit-against-district2)

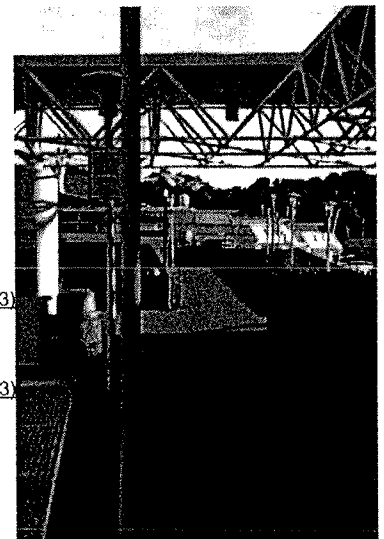
TAKE ACTION

Got a tip?
(http://www.marinij.com/marinnews/ci_23679363)

Send us a photo
(http://www.marinij.com/marinnews/ci_23679363)

Visit community links
(<http://blogs.marinij.com/>)

Have a correction?
(http://www.marinij.com/marinnews/ci_19738665)



1964: NMWD decides on S.F. architects

COMPILED BY MIKE READ
Novato History Museum

85 Years Ago
October 1929

A.T. Bettencourt will open his service station at Ignacio to the public next Saturday. This is a finely equipped station, and will dispense oils, gas, greases and auto accessories.

Miss Catherine Renati has resigned her position in the local telephone office and gone to Oakland, where she has accepted a position. Mrs. L. E. Wells and Miss Bernice Ricker have joined the hello force in Novato.

75 Years Ago
October 1939

The chancel of the Presbyterian Church is undergoing extensive alterations. Valeur drapes and a new communion table with candelabrum and a gold cross occupies the space where the pulpit stood. The choir section is enclosed, while on the opposite side the pulpit is to be elevated so that the preacher will be in better view of the congregation.

An all time recruiting record was established in the San Francisco district with the enlistment of over 520 men during the



month of September, according to Colonel G. T. Perkins, army recruiting officer, San Francisco.

50 Years Ago
October 1964

The North Marin Water District directors last night declared their intention to employ San Francisco architect John S. Bolles to design a new central office building for the district. The district plans to place the proposed building on its five-acre corporation yard at Atherton Avenue adjoining the Northwestern Pacific Railroad tracks. Jerome B. Gilbert, manager of the district, said that the cost of the design job has not yet been set. Bolles designed the buildings for the McGraw-Hill Book Center planned for Highway 101 north of Novato. Gilbert said. The Bank of Marin has received

approval from the state superintendent of banks, to issue a limited number of shares of the bank's stock to Novatans. President W. P. Murray Jr. said the stock would be sold at a price of \$34 per share.

The Bank of Marin's third office will open in Novato on November 13 at Seventh Street and Grant Avenue.

25 Years Ago
October 1989

Highway 101 is hardly the road less traveled but Marin supervisors have agreed to go along with a Caltrans proposal that will allow garbage and other trucks to make tricky highway crossings. Tuesday's vote to retain five cross-traffic openings — one more than Caltrans proposed — when the state transportation agency installs a median barrier next year was opposed by Supervisor Bob Stockwell, who has repeatedly argued for the closing of all access to the highway along the nearly 7 miles between Novato and Petaluma.

The stretch, termed "Blood Alley" by Stockwell, has been the site of 18 serious accidents resulting in 29 serious injuries and three fatalities in the past five years. The vote pitted costs against safety. The four-pronged resolution passed by a 3-2 vote, backed by Rob Rounquiere, Gary Giacomini and Hal Brown. Al Aramburu also opposed the action.

MARINSCOPE

Novato
Advance
10/10/14

A watershed's perspective on changes on the horizon

Next month the Tomales Bay Watershed Council will begin the eighth consecutive year of the Tomales Bay Watershed Water Quality Monitoring Program. Working with partners, the council has developed a watershed-wide comprehensive monitoring program for Tomales Bay; by measuring trends in water quality we can support science-based decisions and provide ongoing public health information on the quality of creeks and the bay. Water quality monitoring provides accountability and can measure the effectiveness of our efforts on the landscape to improve practices and reduce human impacts, as well as changes in the bay due to local influences, global warming and ocean acidification. Through monitoring we can better understand the subtleties of this estuary—an important home and nursery for a rich marine ecosystem of international importance, and a place humans depend on.

Your support is needed to help continue this program. Please join us for a benefit dinner at Saltwater Oyster Depot in Inverness, at 6 p.m. on Nov. 18, and consider making a donation to match our partners at the California Wildlife Foundation, Inverness Foundation and Hog Island Oyster Company. Individuals have joined these entities to help support this important program by providing financial support, and by sponsoring sampling sites. Every month we collect samples at 15 locations, looking at bacteria, sediment, nutrients, acidity, temperature and other parameters used to measure the general health of our bay and creek waters.

Our biannual council meeting will also be held in November, when we will present an update on water quality trends and issues, and revisit our mission and role in the watershed community. The council formed in 2000, released the Tomales Bay Watershed Stewardship Plan in 2003 and continues to work on the priorities identified in that plan. We are a collective, collaborative, consensus-based organization that relies on the sum of our parts—we are only as strong as our members, and often our strength comes from the independent actions of our members. This synergy undoubtedly has made improvements to our watershed and bay. We need the participation of local partners and individuals to continue this vital work.

The council is committed to increasing our collective understanding of this watershed and its needs, and opportunities to participate in stewardship. The council has always included all of the stakehold-

*Pt. Reyes Light
9/23/14*

ers in the Tomales Bay watershed: government agencies, nonprofits, agriculture, mariculture, recreation, homeowners, water districts and local residents alike. Shrinking public funding has undoubtedly affected participation; meanwhile, the need for a council has never been greater. Together we can engage in solutions to the challenges facing our watershed.

For information about the Tomales Bay Watershed Council visit tomalesbay-watershed.org.

First phase of Dry Creek makeover nears completion

BY MARY CALLAHAN THE PRESS DEMOCRAT on September 25, 2014, 7:14PM 09/25/2014

Construction crews that have spent more than two years reconfiguring a mile-long stretch of Dry Creek outside Healdsburg are about to mark completion of the critical first leg of what, by 2020, is to be a six-mile project designed to create new habitat for threatened and endangered fish.

So far, workers have strategically placed thousands of tons of locally sourced rock and more than a thousand giant root balls and saw logs in the creek, and they've removed some 30,000 cubic yards of soil and gravel to create restful backwaters, some of which already are being used by fish species whose very survival is at risk, officials said.

The overall goal is to offer supportive habitat for coho and chinook salmon, as well as steelhead trout, that includes areas of slow-water refuge, plenty of places to hide from predators, adequate food supply and cool, shallow current — partly offsetting the loss of 130 square-miles of upstream habitat cut off by the construction of Warm Springs Dam to create Lake Sonoma in 1983.

The reservoir has offered the project one advantage: From the dam at its southern end comes a reliable supply of cold, clear water that's so rare in the Russian River watershed these days, said Eric Larson, environmental program manager for the California Department of Fish and Wildlife.

"Basically, it comes down to the recognition that due to the characteristics of Dry Creek following the construction of the Warm Springs Dam, Dry Creek offers a huge opportunity to create salmonid habitat in the Russian River watershed where it once did not exist," at least not year-round, Larson said.

It remains to be seen whether the entire habitat restoration effort will be enough to ensure a future for the three local species, all of them listed under the federal Endangered Species Act.

But with the first of the six miles nearly completed, the results so far appear impressive.

"This past year we saw baby coho in the demonstration project backwater thriving, which is a significant milestone in moving this project forward," Sonoma County Supervisor Mike McGuire said.

"It looks great," said Andrew Fegelman, a spokesman for Quivira Winery, one of the first properties involved in the project, which is dependent on the willingness of private landowners, mostly grape growers, to participate. "Visitors to the winery just love the fact that this project is ongoing. Everybody who comes to the winery is totally behind it."

Under a 2008 order from the National Marine Fisheries Service, the Sonoma County Water Agency has been charged with enhancing six miles of Dry Creek within the 14-mile reach between Lake Sonoma and the Russian River as a condition of continuing to use the creek to deliver water to approximately 600,000 customers in Sonoma and northern Marin counties.

The cost of the restoration is significant: about \$8 million a mile, taking into account design, engineering,

construction, permitting and other costs, said Greg Guensch, an engineer and project manager for the Water Agency.

But the alternative — a now-shelved proposal for a 24-mile pipeline that would transport water from Lake Sonoma to the agency's intake on the Russian River in Forestville — would have been far more costly, officials said.

"We've always had two choices," McGuire said. "Do the right thing environmentally and for the ratepayers, and advance the habitat enhancement project, or construct a pipeline that would have cost ratepayers eventually over \$300 million and disrupted the Dry Creek Valley for years with a massive construction project.

"It's not every day the preferred option not only benefits our environment, but the taxpayers, as well," McGuire said.

Much of the work involves excavating side channels and backwaters that extend several hundred feet adjacent to the creek and into which water can pool, creating a still place for juvenile fish to grow and for migrating adults to rest.

Experts in the specialized field of creek restoration have designed a host of other techniques to alter the flow of water and dilute its energy, stabilize stream banks, and support the growth of beneficial vegetation.

Half-ton and ton boulders, as well as lengths of fir tree lashed with cable, have been placed strategically in the creek to create not just backwaters but riffle runs and other kinds of habitat.

The work so far has been centered around the Lambert Bridge area, extending roughly a half mile in each direction, with another 1,500-foot area closer to Warm Springs Dam completed last fall by the U.S. Army Corps of Engineers.

The first Water Agency project was near Quivira Winery in autumn 2012, followed in 2013 by additional, larger scale work near Amista Winery and Dry Creek Vineyard.

An area about twice as large was restored this year, said David Manning, environmental resources coordinator for the Water Agency.

Among the projects completed since mid-June is a large-scale bank stabilization project at Dry Creek Vineyard that required installation of 950 feet of pipeline, 8 feet in diameter, to draw off the creek and bypass the construction area, now filled with huge log and boulder structures.

The pipe was dismantled earlier this month in an area that is now being excavated for creation of a backwater similar to one just completed last month slightly downstream.

"We're definitely escalating the pace and the scale," Manning said.

But construction will be drawing to a close in mid-October for a one-year hiatus during which the Water Agency will secure landowner permission for future projects, continue design and engineering work, acquire permits and prepare to begin again in 2016.

Guensch said the agency has lined up potential partners among Dry Creek landowners for several more miles,

despite some early resistance.

Each agreement gets hammered out individually so it's tailored to the needs of private property owners. McGuire said the deals have come together "one kitchen table at a time."

Dry Creek Vineyard owner Don Wallace said the project on his land included removal of two or three mangled car bodies, old tires and other debris used long ago to try to stabilize the creek bank.

Early stages in the work can appear "a little clunky," Wallace said, describing the look of a streambed overhaul.

"But they grow in, and what it becomes is pretty miraculous over time, especially the backwater features," he said. "It's all going to be a great benefit to the fish ... and not just the fish. Now we've created a riparian corridor through here that's good for all kinds of species."

You can reach Staff Writer Mary Callahan at 521-5249 or mary.callahan@pressdemocrat.com.

Construction crews that have spent more than two years reconfiguring a mile-long stretch of Dry Creek outside Healdsburg are about to mark completion of the critical first leg of what, by 2020, is to be a six-mile project designed to create new habitat for threatened and endangered fish.

So far, workers have strategically placed thousands of tons of locally sourced rock and more than a thousand giant root balls and saw logs in the creek, and they've removed some 30,000 cubic yards of soil and gravel to create restful backwaters, some of which already are being used by fish species whose very survival is at risk, officials said.

The overall goal is to offer supportive habitat for coho and chinook salmon, as well as steelhead trout, that includes areas of slow-water refuge, plenty of places to hide from predators, adequate food supply and cool, shallow current — partly offsetting the loss of 130 square-miles of upstream habitat cut off by the construction of Warm Springs Dam to create Lake Sonoma in 1983.

The reservoir has offered the project one advantage: From the dam at its southern end comes a reliable supply of cold, clear water that's so rare in the Russian River watershed these days, said Eric Larson, environmental program manager for the California Department of Fish and Wildlife.

"Basically, it comes down to the recognition that due to the characteristics of Dry Creek following the construction of the Warm Springs Dam, Dry Creek offers a huge opportunity to create salmonid habitat in the Russian River watershed where it once did not exist," at least not year-round, Larson said.

It remains to be seen whether the entire habitat restoration effort will be enough to ensure a future for the three local species, all of them listed under the federal Endangered Species Act.

But with the first of the six miles nearly completed, the results so far appear impressive.

"This past year we saw baby coho in the demonstration project backwater thriving, which is a significant milestone in moving this project forward," Sonoma County Supervisor Mike McGuire said.

"It looks great," said Andrew Fegelman, a spokesman for Quivira Winery, one of the first properties involved in the project, which is dependent on the willingness of private landowners, mostly grape growers, to participate.

“Visitors to the winery just love the fact that this project is ongoing. Everybody who comes to the winery is totally behind it.”

Under a 2008 order from the National Marine Fisheries Service, the Sonoma County Water Agency has been charged with enhancing six miles of Dry Creek within the 14-mile reach between Lake Sonoma and the Russian River as a condition of continuing to use the creek to deliver water to approximately 600,000 customers in Sonoma and northern Marin counties.

The cost of the restoration is significant: about \$8 million a mile, taking into account design, engineering, construction, permitting and other costs, said Greg Guensch, an engineer and project manager for the Water Agency.

But the alternative — a now-shelved proposal for a 24-mile pipeline that would transport water from Lake Sonoma to the agency’s intake on the Russian River in Forestville — would have been far more costly, officials said.

“We’ve always had two choices,” McGuire said. “Do the right thing environmentally and for the ratepayers, and advance the habitat enhancement project, or construct a pipeline that would have cost ratepayers eventually over \$300 million and disrupted the Dry Creek Valley for years with a massive construction project.

“It’s not every day the preferred option not only benefits our environment, but the taxpayers, as well,” McGuire said.

Much of the work involves excavating side channels and backwaters that extend several hundred feet adjacent to the creek and into which water can pool, creating a still place for juvenile fish to grow and for migrating adults to rest.

Experts in the specialized field of creek restoration have designed a host of other techniques to alter the flow of water and dilute its energy, stabilize stream banks, and support the growth of beneficial vegetation.

Half-ton and ton boulders, as well as lengths of fir tree lashed with cable, have been placed strategically in the creek to create not just backwaters but riffle runs and other kinds of habitat.

The work so far has been centered around the Lambert Bridge area, extending roughly a half mile in each direction, with another 1,500-foot area closer to Warm Springs Dam completed last fall by the U.S. Army Corps of Engineers.

The first Water Agency project was near Quivira Winery in autumn 2012, followed in 2013 by additional, larger scale work near Amista Winery and Dry Creek Vineyard.

An area about twice as large was restored this year, said David Manning, environmental resources coordinator for the Water Agency.

Among the projects completed since mid-June is a large-scale bank stabilization project at Dry Creek Vineyard that required installation of 950 feet of pipeline, 8 feet in diameter, to draw off the creek and bypass the construction area, now filled with huge log and boulder structures.

The pipe was dismantled earlier this month in an area that is now being excavated for creation of a backwater

Humboldt water district mulls trans-county pipeline

By Will Houston whouston@times-standard.com @Will_S_Houston on Twitter

Updated: 10/01/2014 12:13:57 PMPDT

Times-Standard.com

Click photo to enlarge

The Humboldt Bay Municipal Water District is considering a pipeline to sell water in and out of the county — a plan proponents say would lower rates for existing customers and help finance the replacement of a 60-year-old water system.

During a special meeting on Tuesday, the district's board of directors continued discussion on a pipeline reconnaissance study it completed in August. The study looked at the feasibility of several scenarios for pipeline construction, but the board had three main options in mind at its meeting: an east-west pipeline, a north-south pipeline or both.

The board stated that the pipeline would transport 20 to 40 million gallons of water per day depending on the size of pipes used.

"We have begun a process touching base with potential users that we identified in Northern California," Division 4 Director J. Bruce Rupp said. "Our goal was to try to partner up with a municipal agency, water agency in the Northern California region."

As the cost would be more than the district could manage alone, the board is seeking to work with other water districts to construct it.

"We're not going to build a pipeline. We need to have a partner," board President and Division 5 Director Aldaron Laird said.

The district's wholesale water demand from Ruth Lake decreased by about 80 percent — about 60 million gallons of water per day — after the 2009 closure of the Samoa pulp mill, which followed the closure of another mill. Laird said this drop had an opposite effect on the seven municipal water suppliers to which the district sells water.

"The big thing is that when the mills closed down, 50 percent of paying for the cost of running this water district all of a sudden got added on to the municipals," he said. "Now the municipals pay 100 percent. So obviously they would like us to find some new customers so that their water rates can go down."

As to who these potential customers will be, the board decided at its meeting to consult with its advisory committee — made up of two-dozen local stakeholders — in the coming months on what direction the pipeline should run, as well as to share the results of the feasibility study. Once a plan is decided on, the board plans to speak with potential customers before the end of the year. Division 3 Director Barbara Hecathorn said the board should pursue suppliers in both the east and the south.

"Because so far we haven't received positive interest from anybody yet, but that may change," she said, adding that the continuation of the drought may increase the chance of obtaining

customers.

Laird said the north-south pipeline would mainly be limited to Sonoma, Mendocino and Marin counties, while the east-west pipeline would be much broader.

"If we go to the east all of a sudden our customer is all of California," he said. "We'd tie into a system that's connected all the way to Las Vegas. If we go south, we have a discrete customer. If we tie into the system on the east, it doesn't matter where the water ends up once you plug in."

Other transport methods were mulled including transport of water by ship, but the costs for that — which ranged from \$8,000 to \$10,000 per acre foot —were "substantial," Rupp said.

Revenue generated from the pipeline would also go toward replacing the district's nearly 60-year-old domestic water system, which would cost \$40 million to \$60 million over a 20-year period.

"That's above and beyond what our water rates could cover," Laird said.

The project is racing against the clock, as the district's water rights permit is due to go back to the state for renewal in 2029. Though this may seem far off, Laird said the review and processing period can last from 10 to 15 years.

"If you work back from that, we need to have a water rights applications together in the next two to four years," he said. "If we can't find customers down in Sonoma or Marin in two to four years that are interested in pursuing this with us, then we wouldn't be able to apply for a water right to do that because we'd have nobody to sell it to. We need to, in a sense, eliminate different options as soon as we can so we can focus our energy on the options that look promising that we can pursue."

The board is also considering other options in its water rights application, including dedicating water to in-stream flows to benefit plant and wildlife in the Mad River estuary and upriver as well as local water demands, such as supplying water to the business park being set up by the Humboldt Bay Harbor, Recreation & Conservation District at the Samoa pulp mill.

Should these options fail, Laird said their application would only be limited to 10 million to 20 million gallons a day to supply the local municipalities.

Will Houston can be reached at 707-441-0504.

17

18