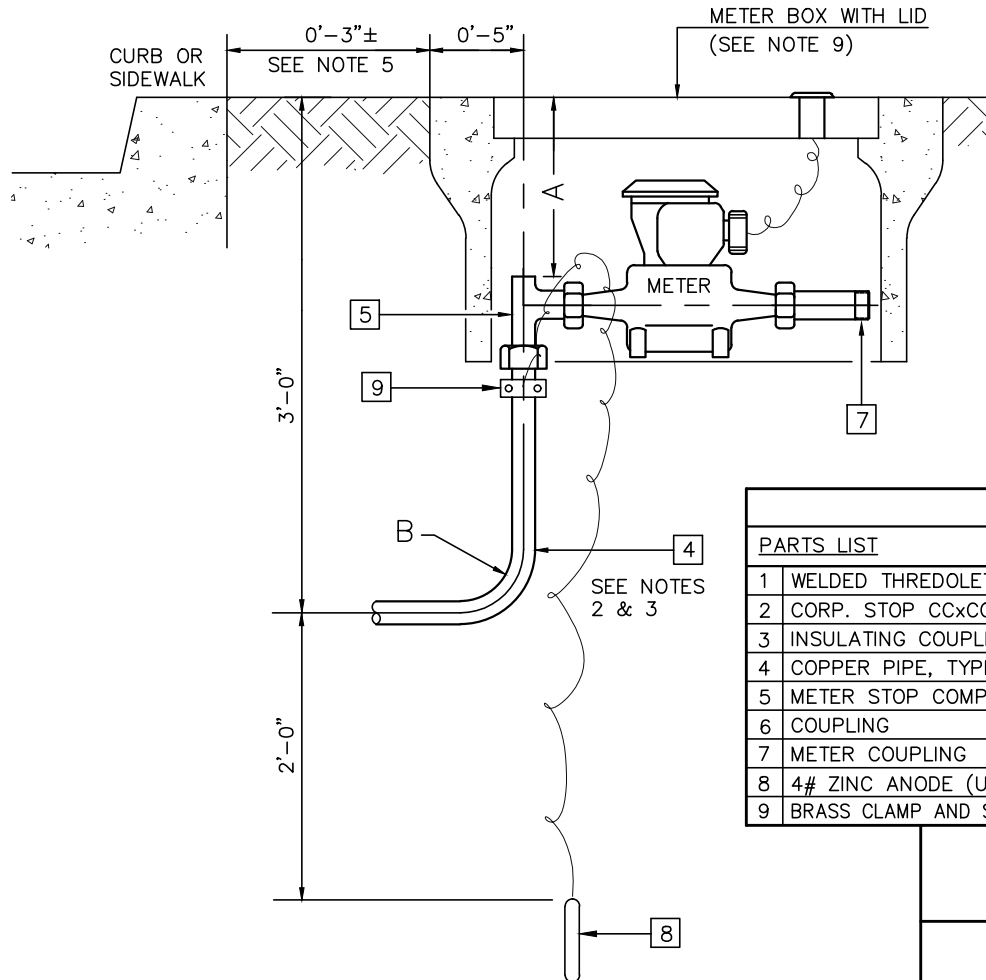


METER SIZE	METER BOX	METER LID*	DESCRIPTION
5/8"	BX09	FLX09XP	FIBRELYTE
1"	B16	FL16P	FIBRELYTE
1-1/2"	N30	FL30P	FIBRELYTE
2"	N36	FL36P	FIBRELYTE
DUAL 5/8"	B24	B24D-PP	NEPTUNE CONCRETE WATER

*ALL AMI-STYLE METERS REQUIRE LIDS WITH NEPTUNE OFFSET PROBE HOLE(S).

	METER SIZE	
	5/8" & 1"	1-1/2" & 2"
A	0'-7"	0'-9"
B	1'-0"	1'-6"
Ø	45°	0°



NOTES:

- SEE NMWD TECHNICAL SPECIFICATION 15000 FOR MATERIAL REQUIREMENTS.
- BACKFILL MINIMUM 6" ABOVE LATERAL WITH PEA AND SAND. SEE NMWD TECHNICAL SPECIFICATION 02223 FOR TRENCHING & BACKFILLING REQUIREMENTS.
- NMWD WILL BEND 2" COPPER PIPE
- FOR 1-1/2" METER SIZE AND LARGER STANDARD WATER SERVICE INSTALLATIONS USE:
 - FULL CIRCLE CLAMP EXISTING ACP OR CIP MAIN
- FOR 3/4" AND 1" TAPS, USE SADDLE (EXCEPT STEEL PIPE, USE THREDOLET)
- ALONG STREETS WITH NO CURB OR SIDEWALK METER BOX SHALL BE INSTALLED AS FAR AS POSSIBLE AWAY FROM EDGE OF PAVEMENT AS DIRECTED BY THE DISTRICT.
- SERVICE SADDLE SHALL NOT BE INSTALLED W/ IN 24" OF VALVE, JOINT OR FITTING.
- NO DIRECT TAPPING ALLOWED. STAGGER MULTIPLE TAPS W/ MIN. 18" SPACING.
- FOR 6"-14" FUSIBLE PIPE MAX TAP SIZE IS 1". FOR 16" FUSIBLE PIPE MAX TAP SIZE IS 2".
- SPECIFY PURPLE LID FOR RECYCLED WATER.

PARTS LIST	METER SIZE		
	5/8"	1"	1-1/2" & 2"
1 WELDED THREDOLET OUTLET	1"x3" LG	1"x3" LG	2"x3" LG
2 CORP. STOP CCxCOMP	1"x1"	1"x1"	2"x2"
3 INSULATING COUPLING	1"	1"	2"
4 COPPER PIPE, TYPE K	1"	1"	2"
5 METER STOP COMPxFIP	1"	1"	2"
6 COUPLING	1"	1"	2"
7 METER COUPLING	1"W/1x3/4" ADAP.	1"	2"
8 4# ZINC ANODE (USE 12# FOR SERVICE RUNS > TO 20 FT.)			
9 BRASS CLAMP AND SCREWS ON BARE PIPE			



**STANDARD WATER SERVICE INSTALLATION
5/8" TO 2" IN SIZE**

APPROVED	DATE	REV	STD NO
<i>[Signature]</i>	09/05/19	5	15