

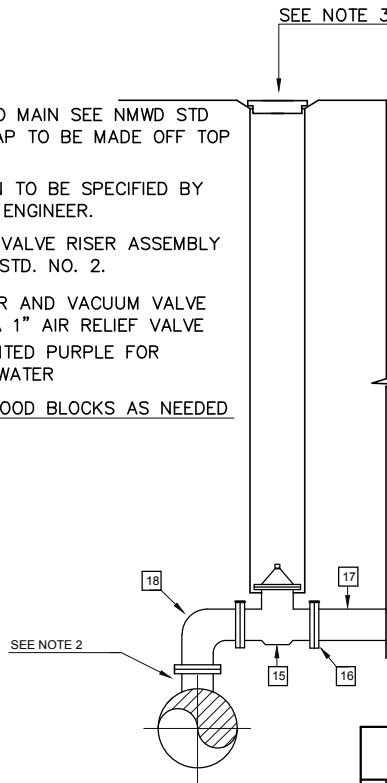
1" & 2" AIR RELIEF ASSEMBLY

N.T.S.

PARTS LIST	AIR RELIEF SIZE			
	1"	2"	3"	4"
1 COPPER PIPE, TYPE K	1"	2"	-	-
2 METER STOP	1"	2"	-	-
3 BRASS BUSHING/METER FLANGE	1 1/4"x1"	2"x2"	-	-
4 BRASS NIPPLE	1"x6"	2"x6"	-	-
5 90° ELBOW BRASS	1"	2"	-	-
6 BRASS NIPPLE	1"x3"	2"x3"	-	-
7 1" & 2" CRISPIN AIR RELEASE VALVE - 3" & 4" CRISPIN AIR AND VACUUM VALVE OR EQUIVALENT	1"	2"	3"	4"
8 MALE ADAPTOR - PVC S/T	1"	2"	3"	4"
9 PVC PIPE, SCH 40/80	1"	2"	3"	4"
10 90° ELBOW - PVC SxS	1"	2"	3"	4"
11 SCREEN (NMWD FABRICATED) 316 SS, 1/8" OPENING	1"	2"	3"	4"
12 DRAIN VALVE	1/2"	1/2"	1/2"	1/2"
13 METER BOX CHRISTY B30/B40	1 1/2"	1 1/2"	3"	3"

NOTES:

- 1) FOR TAP TO MAIN SEE NMWD STD NO. 15. TAP TO BE MADE OFF TOP OF MAIN.
  - 2) MAIN TIE-IN TO BE SPECIFIED BY A DISTRICT ENGINEER.
  - 3) FOR NMWD VALVE RISER ASSEMBLY SEE NMWD STD. NO. 2.
  - 4) 3" & 4" AIR AND VACUUM VALVE REQUIRES A 1" AIR RELIEF VALVE
  - 5) TO BE PAINTED PURPLE FOR RECYCLED WATER
- 2"x8" REDWOOD BLOCKS AS NEEDED




3" & 4" AIR RELIEF ASSEMBLY

N.T.S.

PARTS LIST	AIR RELIEF SIZE			
	1"	2"	3"	4"
14 METER BOX LID STEEL CHRISTY B30/B40-61D	1 1/2"	1 1/2"	3"	3"
15 GATE VALVE FF	-	-	3"	4"
16 SLIP-ON WELD FLANGE	-	-	3"	4"
17 STEEL PIPE CLCTW (FIELD FIT)	-	-	3"	4"
18 90° ELBOW FF	-	-	3"	4"
19 SPOOL FF (FIELD FIT)	-	-	3"	4"
20 TEE BRASS	-	-	1"	1"
21 BRASS BUSHING REDUCER	-	-	1"x1/2"	1"x1/2"
22 BRASS NIPPLE	-	-	1"x3"	1"x3"
23 12 # ANODE (PER STD NO. 12)	-	-	1"x3"	1"x3"



STANDARD  
AIR RELIEF VALVE INSTALLATION  
1" TO 4" IN SIZE

APPROVED	DATE	REV	STD NO
	12/28/10	2	26