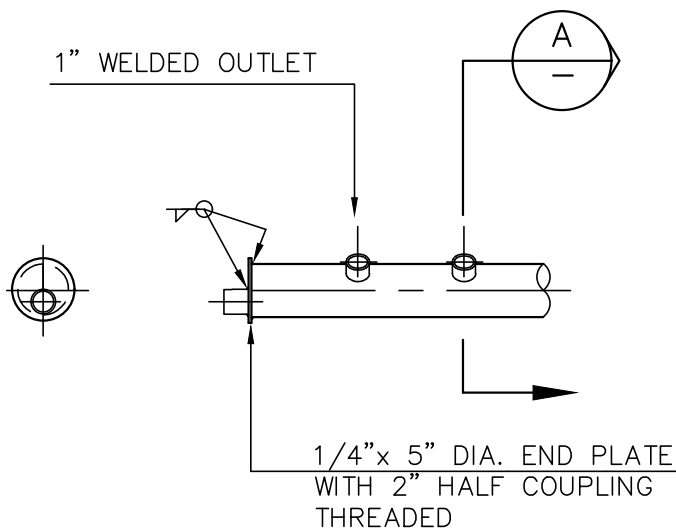
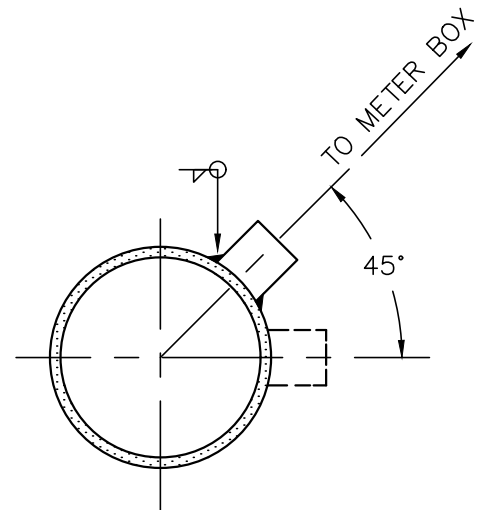


PLAN



PROFILE



SECTION A
—

NOTES:

- 1) 1" WELDED THREDOLET OUTLET ORIENTED AS REQUIRED (HORIZONTAL OR @ 45°)
ALL EXPOSED STEEL INCLUDING OUTLETS AND COUPLING TO BE PRIMED AND COAL TAR WRAPPED.
- 2) INSTALL INSULATOR COUPLING AT SERVICE LINE CONNECTIONS TO MANIFOLD.
- 3) FOR WATER SERVICE INSTALLATION REFER TO NMWD STD. NO.15
- 4) FOR 2" BLOW-OFF ASSEMBLY REFER TO NMWD STD. NO.6
- 5) INSTALL ANODE PER NMWD STD. NO. 12



**NORTH MARIN
WATER DISTRICT**

**4" STEEL MANIFOLD ASSEMBLY
FOR MULTIPLE WATER
SERVICE INSTALLATIONS**

APPROVED

DATE

REV

STD NO

09/05/19

3

14

THIS STANDARD REPLACES NMWD STD-A-8