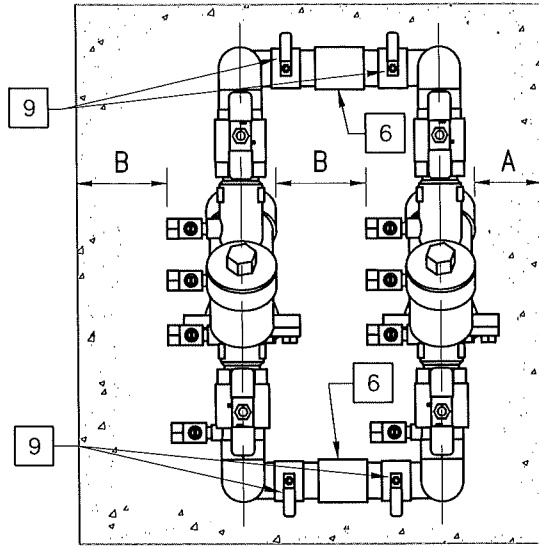
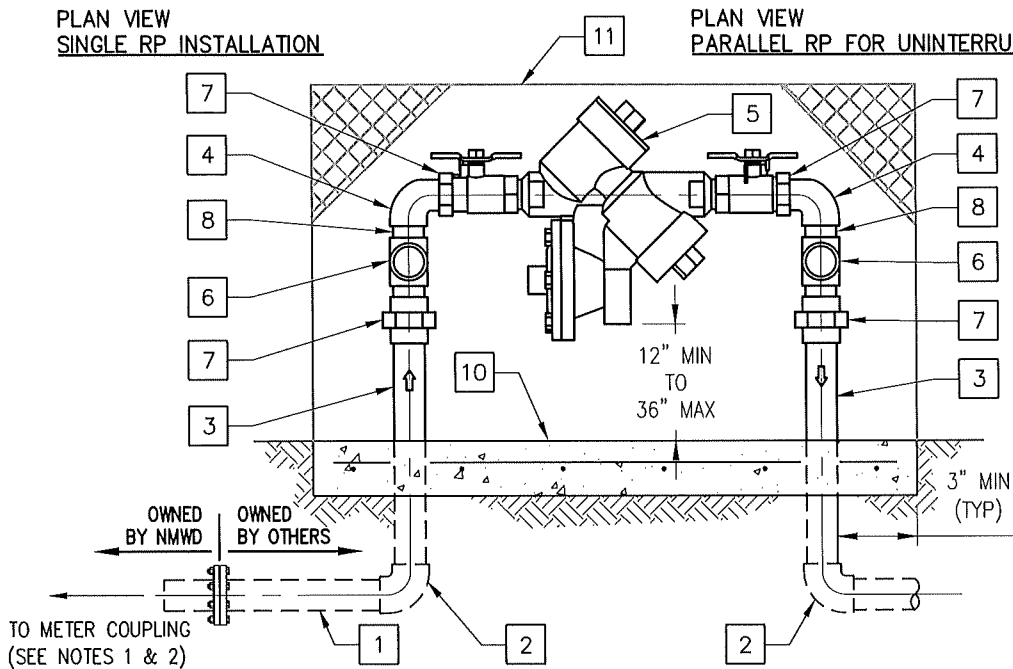


PLAN VIEW
SINGLE RP INSTALLATION



PLAN VIEW
PARALLEL RP FOR UNINTERRUPTED SERVICE



ITEM:	PARTS LIST:
1	NIPPLE, FIELD FIT
2	90° ELBOW
3	PIPE, FIELD FIT, 10 ML TAPE AROUND PIPE IN CONTACT WITH CONCRETE
4	90° ELBOW OR TEE FOR PARALLEL SERVICE
5	REDUCED PRESSURE PRINCIPLE ASSEMBLY - WILKINS 975-XL2 OR EQUAL
6	FLANGED TEE (PARALLEL OPTION)
7	UNION FEMALE (ALLOWS FOR REMOVAL, PARALLEL OPTION)
8	SHORT NIPPLE (TYPICAL)
9	BALL VALVE
10	CONC SLAB, 4" THICK, 24"x24" AREA MINIMUM (FIELD FIT) PER NMWD STD SPEC SECTION 03300
11	ENCLOSURE (CAGE OR INSULATION BLANKET RECOMMENDED)

NOTES:

- REFER TO SECTION 15112 OF THE SPECIFICATIONS.
- NO OUTLET, TAP TEE OR ANY OTHER TYPE OF CONNECTION WILL BE ALLOWED BETWEEN THE METER AND THE BACKFLOW ASSEMBLY. THE BACKFLOW ASSEMBLY SHOULD BE INSTALLED AS CLOSE AS POSSIBLE TO THE METER. INSPECTION BY THE DISTRICT SHALL TAKE PLACE PRIOR TO ANY BACKFILL.
- CLEARANCE REQUIREMENTS FOR TESTING A=12", B=24".
- TEE FOR PARALLEL SERVICE WILL BE INSTALLED ABOVE GRADE.
- ALL MATERIAL BRASS OR COPPER (DO NOT MIX).

NORTH MARIN WATER DISTRICT
NOVATO, CALIFORNIA

**ABOVE GRADE REDUCED PRESSURE
PRINCIPAL BACKFLOW PREVENTER
3/4" THROUGH 2"**

APPROVED	DATE	REV.	STD. NO.
	03/24/22	8	19