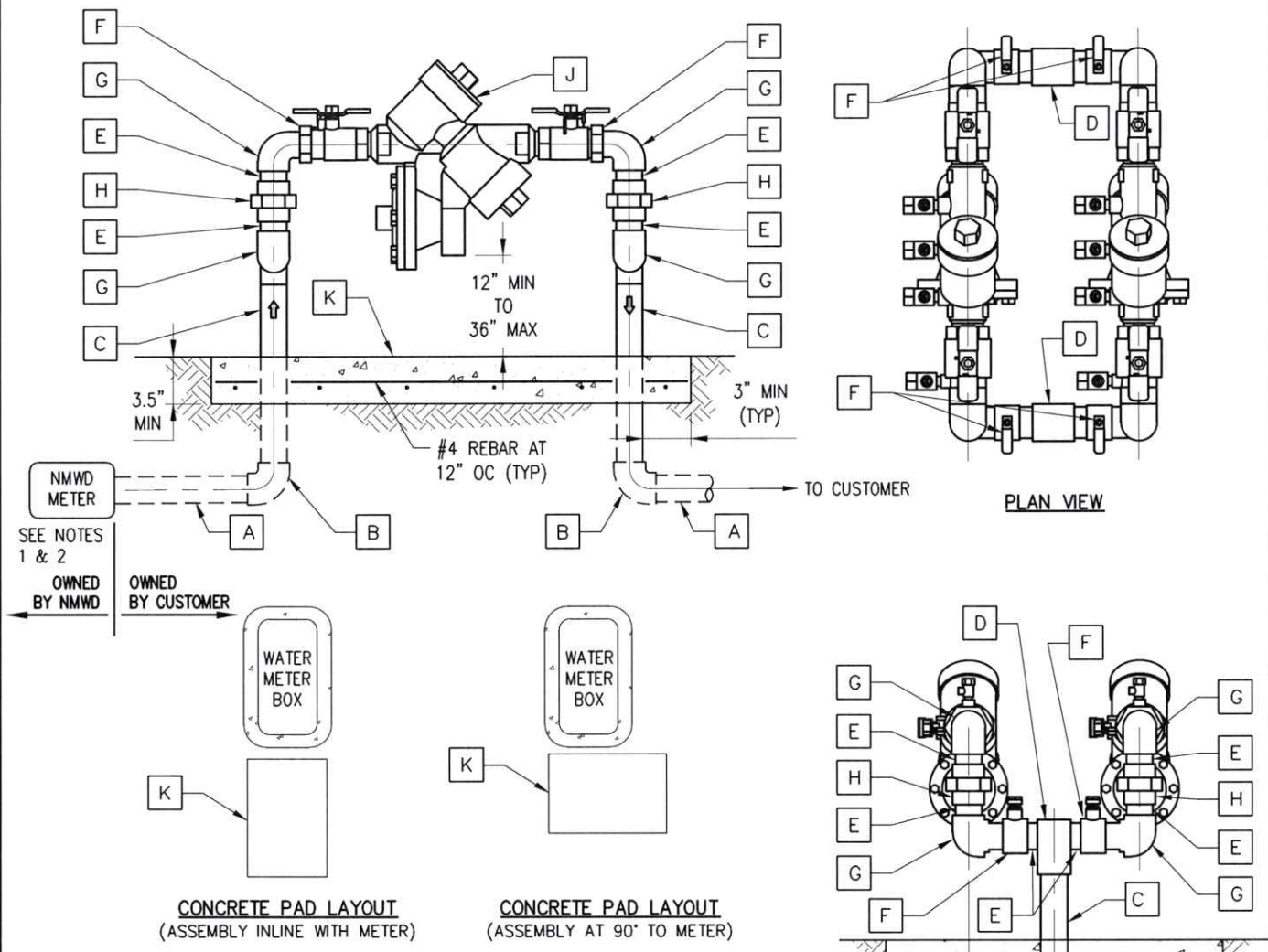


Feb 28, 2023 -- 4:29pm W:\JOB\MISC\STD\19B\_rev2.dwg User: SDOVE



ITEM	DESCRIPTION	QUANTITY
A	NIPPLE/PIPE - FIELD FIT	2
B	90° ELBOW	2
C	NIPPLE/PIPE - FIELD FIT	2
D	TEE	2
E	CLOSE NIPPLE (NOT REQUIRED IF USING COPPER)	12
F	BALL VALVE	4
G	90° STREET ELBOW	8
H	UNION FEMALE (NOT REQUIRED IF USING COPPER)	4
J	BACKFLOW PREVENTION ASSEMBLY - WILKINS 975XL2 OR APPROVED EQUAL (SEE NOTE 1)	2
K	CONCRETE PAD PER NMWD SPECIFICATION 03300	1

- NOTES:**
- REFER TO SPECIFICATION SECTION 15112 FOR BACKFLOW REQUIREMENTS.
  - NO OUTLET, TAP, TEE OR ANY OTHER TYPE OF CONNECTIONS ALLOWED BETWEEN THE METER AND THE ASSEMBLY.
  - THE ASSEMBLY SHALL BE INSTALLED AS CLOSE TO THE METER AS POSSIBLE.
  - INSPECTION BY THE DISTRICT SHALL TAKE PLACE PRIOR TO ANY BACKFILL.
  - ASSEMBLY SHALL BE ACCESSIBLE TO THE DISTRICT FOR TESTING.
  - ALL ABOVE GROUND MATERIAL SHALL BE BRASS OR TYPE K COPPER.
  - ALL INSTALLS SHALL BE LEVEL, PLUMB, AND TRUE.
  - CONCRETE PAD SHALL BE A MINIMUM WIDTH OF THE METER BOX. ASSEMBLY SHALL BE CENTERED ON CONCRETE PAD.
  - ENCLOSURE CAGE OR INSULATION BLANKET IS OPTIONAL.
  - ALL ASSEMBLIES WILL BE OWNED FROM CUSTOMER SIDE OF THE METER AS SHOWN.

NOT TO SCALE

NORTH MARIN WATER DISTRICT NOVATO, CALIFORNIA			
<b>ABOVE GRADE REDUCED PRESSURE PRINCIPAL BACKFLOW PREVENTION ASSEMBLY 3/4" THROUGH 2" (PARALLEL INSTALLATION)</b>			
APPROVED	DATE	REV.	STD. NO.
<i>E. D. M.</i>	02/02/23	2	<b>19B</b>